

Francis

Cauffman

Foley

Hoffmann

Francis Cauffman 2120 Arch Street
Foley Hoffmann Philadelphia, PA 19103
Architects Ltd. 215-566-8250

STRUCTURAL ENGINEER
ROBERT EDWARD CHESTER ASSOCIATES,
119 COLTIER AVENUE
ARNDORF, PA 19003
P (610) 445-9570
F (610) 445-9572
M/E/P ENGINEER

ARKF

e n r i e r s
186 WALNUT STREET, SUITE 1400
PHILADELPHIA, PA 19106
215-752-7800 TEL. 215-515-0676 FAX
A/E/C P/001 NO. 0001008
ADMINISTRATIVE SERVICES - ARCHITECTURE
CONSTRUCTION SERVICES - MECHANICAL

Revisions
11-20-06 CONSTRUCTION DOCUMENTS ISSUED

Sheet

HVAC
FOURTH FLOOR PLAN

Project Title

Landmark Healthcare
Facilities LLC

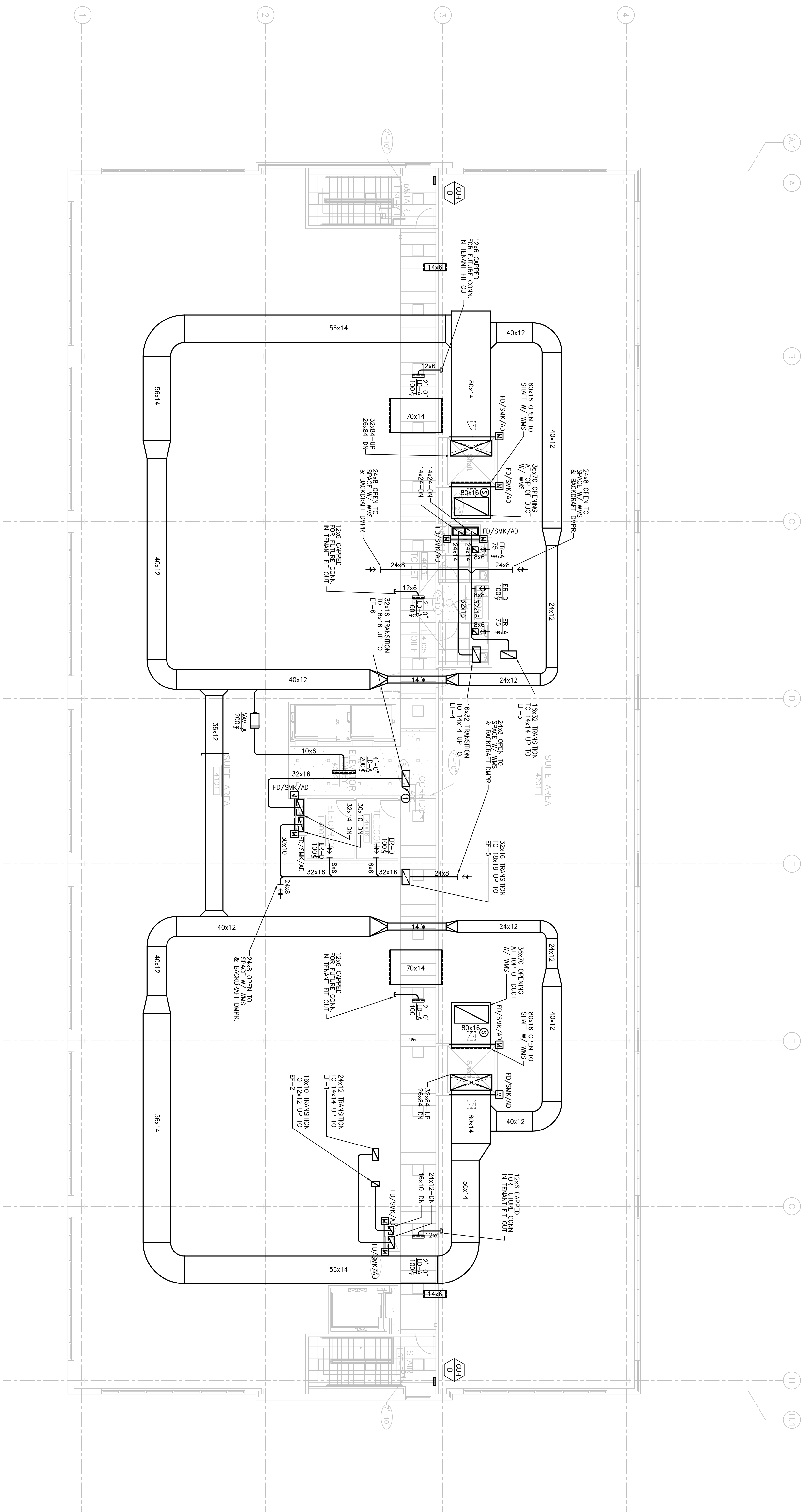
Fore River Medical
Pavilion
Portland, Maine

Date
NOVEMBER 20, 2006

Project Number
FO6-5103

Drawing Number

H2.04



1 FOURTH FLOOR PLAN
SCALE: 1/8"=1'-0"