

Francis

Cauffman

Foley

Hoffmann

Francis Cauffman 2120 Arch Street
Foley Hoffmann Philadelphia, PA 19103
Architects Ltd. 215-566-6250

STRUCTURAL ENGINEER
ROBERT EDWARD CHESTER ASSOCIATES,
119 COLTIER AVENUE
SARASOTA, PA 19003
P (610) 445-9570
F (610) 445-9572
W/E/P ENGINEER

AKF

e n g i n e e r s
188 WALNUT STREET, SUITE 1400
PHILADELPHIA, PA 19106
215-752-7878 TEL. 215-576-0636 FAX
AKF PEOU, INC. PO BOX 60
ADMINISTRATIVE SERVICES - PHILADELPHIA
(610) 576-3333

Revisions
11-20-06 CONSTRUCTION DOCUMENTS ISSUED

Sheet

H/M/C
THIRD FLOOR PLAN

Project Title

Landmark Healthcare
Facilities LLC

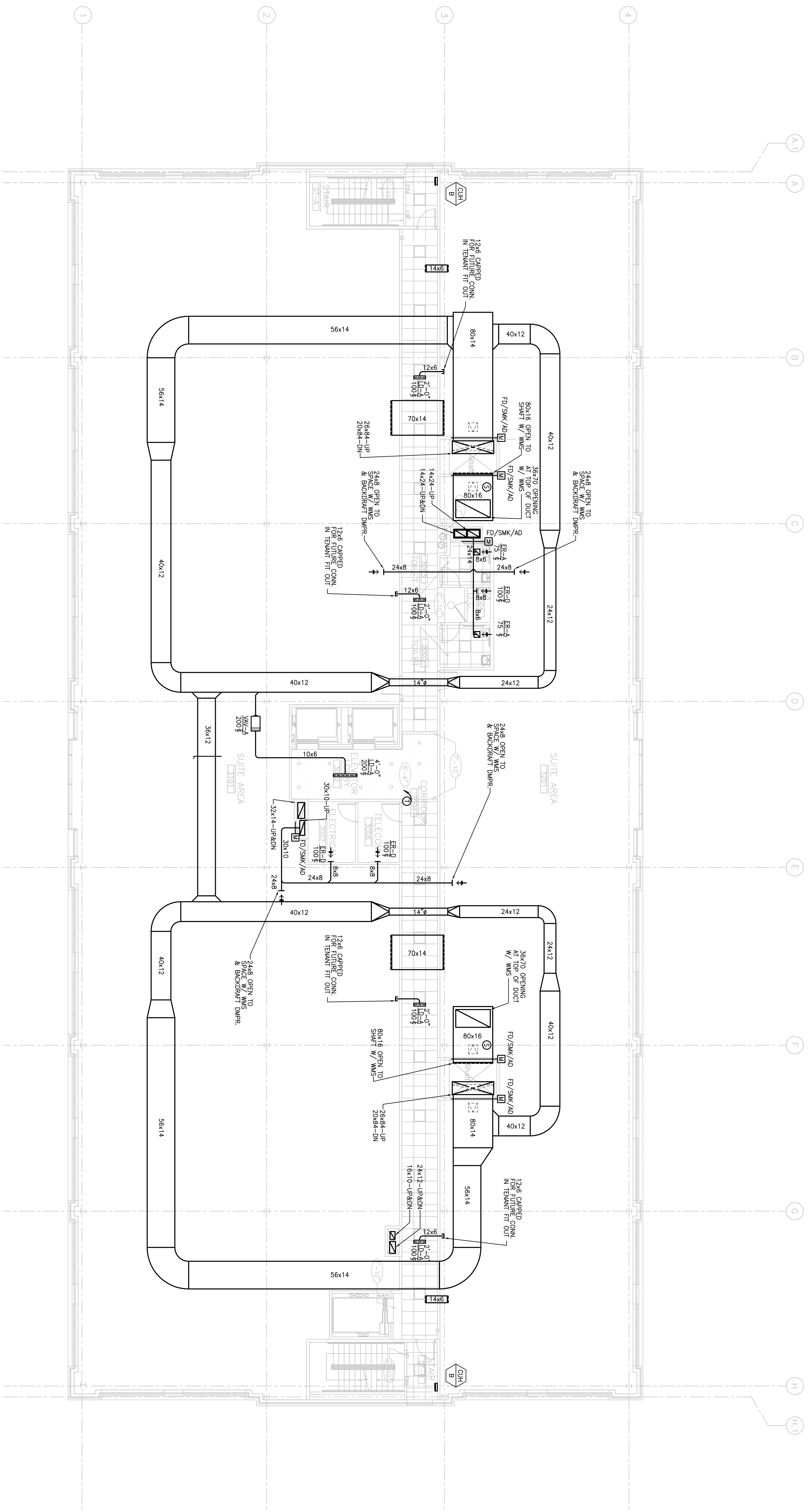
Fore River Medical
Pavilion
Portland, Maine

Date
NOVEMBER 20, 2006

Project Number
FO6-5103

Drawing Number

H2.03



1 THIRD FLOOR PLAN
SCALE: 1/8"=1'-0"

