

**Francis**

**Cauffman**

**Foley**

**Hoffmann**

Francis Cauffman 2120 Arch Street  
Foley Hoffmann Philadelphia, PA 19103  
Architects Ltd. 215-566-8250

STRUCTURAL ENGINEER  
ROBERT EDWARD CHESTER ASSOCIATES,  
119 COLTIER AVENUE  
ARLINGTON, PA 19003  
P (610) 445-9570  
F (610) 445-9572

M/E/P ENGINEER

**AKF**

*engineers*  
150 WALNUT STREET, SUITE 1400  
PHILADELPHIA, PA 19102  
215-251-7280 TEL. 215-516706 FAX  
AAE PEOI NO. P000106  
MEMBERSHIP: AIA, ASCE, SEAW, IACET  
ALLENSTON, PENNSYLVANIA 19381-1173

Revisions  
11-20-06 CONSTRUCTION DOCUMENTS ISSUED

Sheet

H/M/C  
BASEMENT PLAN

Project Title

**Landmark Healthcare  
Facilities, LLC**

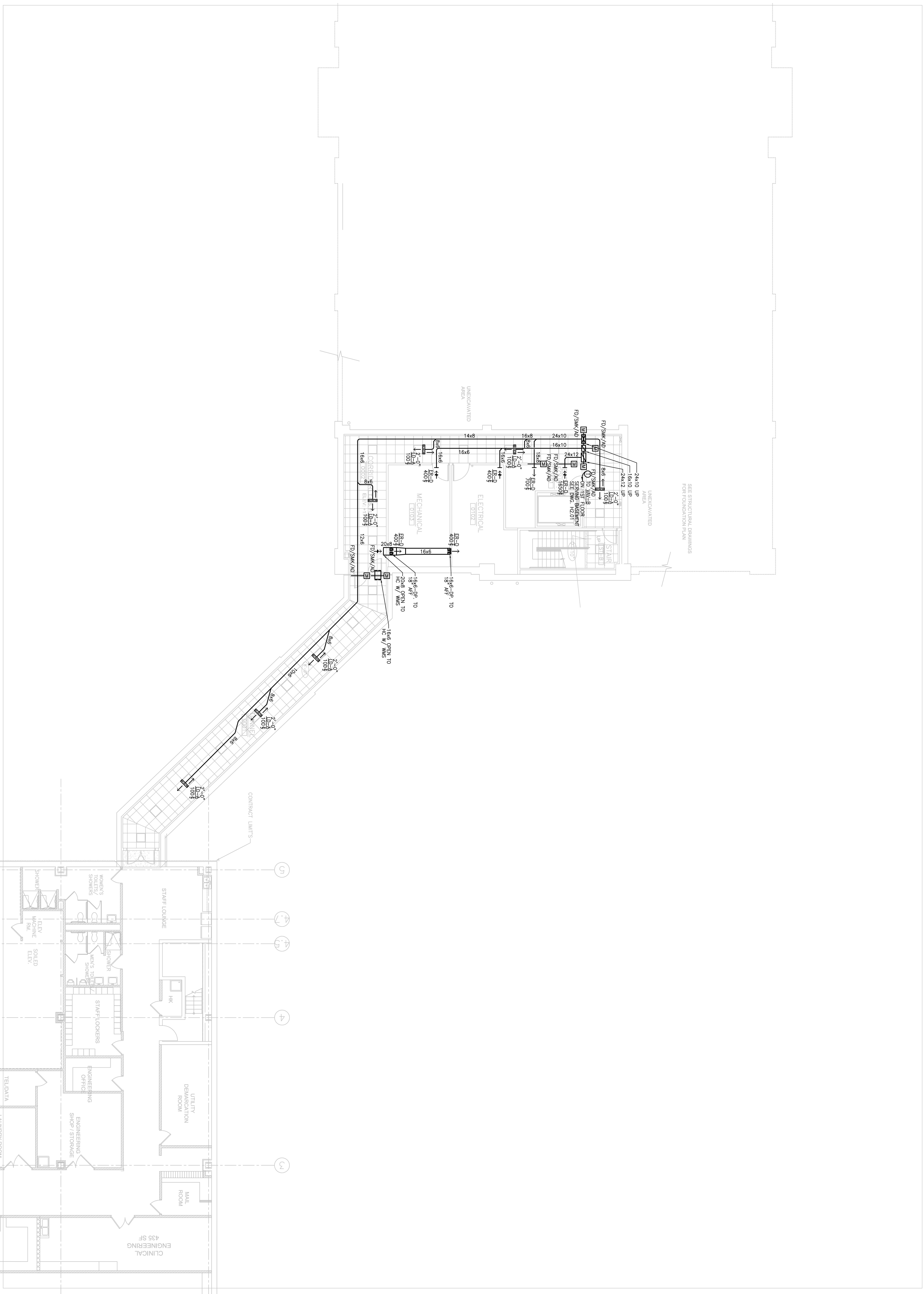
**Fore River Medical  
Pavilion  
Portland, Maine**

Date  
NOVEMBER 20, 2006

Project Number  
FO6-5103

Drawing Number

**H2.00**



**1** BASEMENT PLAN  
SCALE: 1/8" = 1'-0"