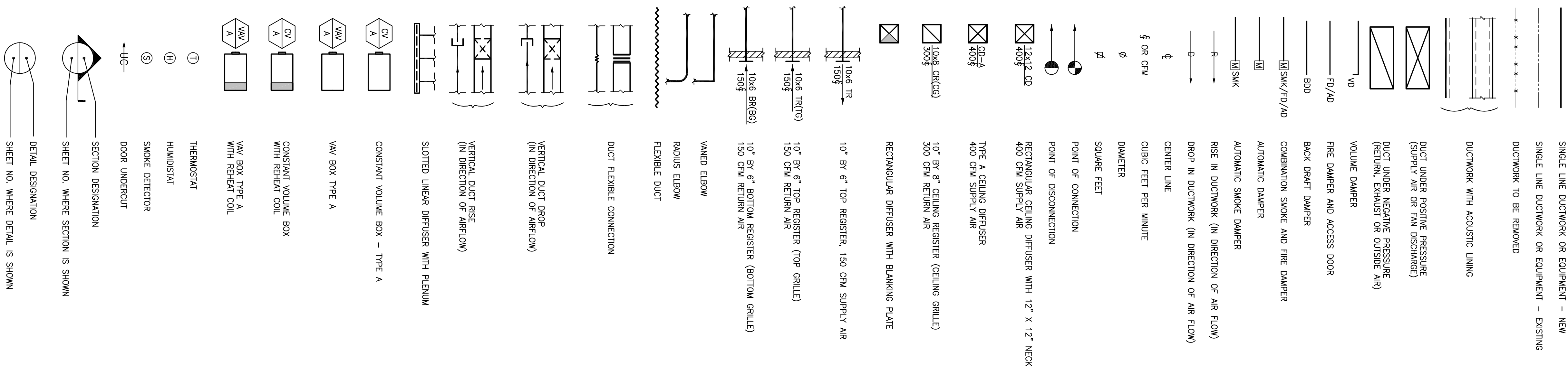


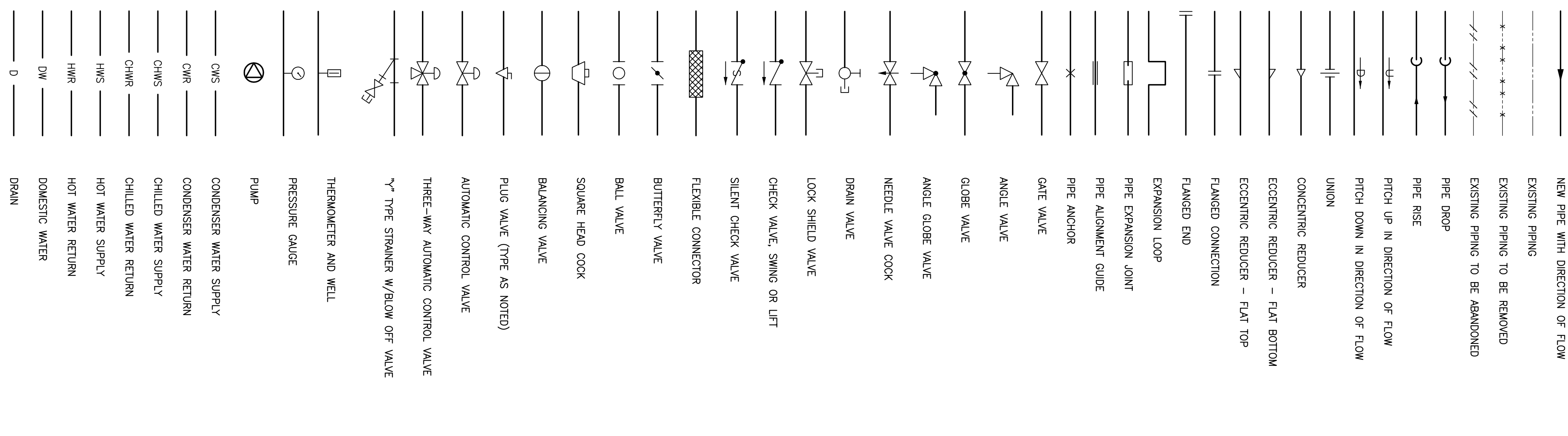
HVAC BASIC DUCTWORK SYMBOLS

(NOT ALL SYMBOLS ARE NECESSARILY USED ON THIS PROJECT)



HVAC BASIC PIPING SYMBOLS

(NOT ALL SYMBOLS ARE NECESSARILY USED ON THIS PROJECT)



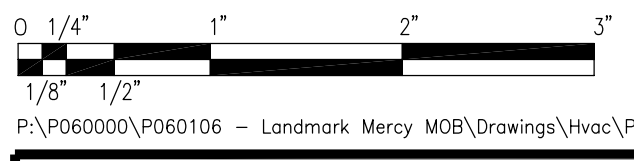
HVAC ABBREVIATIONS

(NOT ALL ABBREVS ARE NECESSARILY USED ON THIS PROJECT)

AW	AUTOMATIC AIR VENT
AC	AIR CONDITIONING
ACU	AIR CONDITIONING UNIT
AD	ACCESS DOOR
AFU	ABOVE FINISHED FLOOR
AG	AIR HANDLING UNIT
BG	BOTTOM GRILLE
BHP	BRAKE HORSEPOWER
BR	BOTTOM REGISTER
BTU	BRITISH THERMAL UNIT
BTUH	BTU PER HOUR
CD	CEILING DIFFUSER
CFM	CUBIC FEET PER MINUTE
CG	CEILING GRILLE
COND	CONDENSATE
CR	CEILING REGISTER
CUH	CABINET UNIT HEATER
CV	CONSTANT VOLUME
DB	DRY BULB
DMW	DAMPERS
DMR	DIRECT EXPANSION
DX	EXISTING TO REBANK
(E)	EXISTING TO BE REMOVED
(ER)	EXISTING TO BE REMOVED & RELOCATED
EAT	ENTERING AIR TEMPERATURE
EBS	ENTERING DRY BULB TEMPERATURE
EF	EXHAUST FAN
EL	ELEVATION
EMB	ENTERING WET BULB
ENH	ENTERING WATER TEMPERATURE
EXH	EXHAUST
F	DEGREES FAHRENHEIT
FA	FREEL AREA (SQ.FT.)
FC	FLEXIBLE CONNECTION
FD	FIRE DAMPER
FL	FINISHED FLOOR
FLA	FULL LOAD AMPERES
FLM	FEET PER MINUTE
GAL	GALLONS PER HOUR
GPH	GALLONS PER HOUR
GPM	GALLONS PER MINUTE
HT	HEIGHT
HR	HOURLY
HV	HEATING AND VENTILATING
HX	HEAT EXCHANGER
HZ	FREQUENCY
IN	INCH OR INCHES
LAT	LEAVING AIR TEMPERATURE
LD	LINEAR DIFFUSER
LF	LINEAR FEET
LWB	LEAVING WET BULB TEMPERATURE
LWT	LEAVING WATER TEMPERATURE
MER	THOUSAND BTU PER HOUR
MHR	MECHANICAL EQUIPMENT ROOM
MIN	MINIMUM
(N)	NEW
NC	NORMALLY CLOSED
ND	NOT IN CONTACT
NO	NORMALLY OPEN
NO.	NUMBER
NTS	NOT TO SCALE
OA	OUTSIDE AIR
OA	OUTSIDE AIR MAKE
OED	OPEN END DUCT
PSI	POUNDS PER SQUARE INCH
PSIA	PSI ABSOLUTE
PSIG	PSI GAUGE
RA	RETURN AIR
RE	RELOCATED EXISTING
RF	RETURN FAN
RH	RELATIVE HUMIDITY
RMC	REHEAT COIL
RLM	RUNNING LOAD AMPS
RLA	REVOLUTIONS PER MINUTE
RO	EXISTING TO BE REMOVED AND RETURN TO OWNER
SA	SUPPLY AIR
SD	SMOKE DAMPER
SF	SUPPLY FAN
SP	STATIC PRESSURE
SPEC	SPECIFICATION
TDH	TOTAL DYNAMIC HEAD
TEMP	TEMPERATURE
TG	TOP GRILLE
TR	TOP REGISTER
TR	TYPE
TRP	UNIT HEATER
UH	VARIABLE FREQUENCY DRIVE
VFD	VARIABLE AIR VOLUME UNIT
VAV	VARIABLE INLET VANES
VW	WIDTH
W	WITH
W/	WET BULB
WB	WET MESH SCREEN
WAS	

GENERAL NOTES

- GENERAL NOTES, SYMBOL LIST AND DETAILS ARE APPLICABLE TO ALL HVAC/MECHANICAL DRAWINGS.
 - DRAWINGS ARE DIAGNOSTIC. DETERMINE LOCATIONS OF SYSTEMS INTERFERES WITH WORK OF THIS CONTRACT.
 - WORK IN THIS SECTION IS SPECIFIED IN SECTION 15000.
 - COORDINATE THIS WORK WITH THAT OF OTHER TRADES.
 - DIMENSIONS SHOWN ON PLAN ARE HORIZONTAL. DIMENSIONS SHOWN IN ELEVATION ARE VERTICAL EXCEPT IN WAY OF STRUCTURAL STEEL. DIMENSIONS ARE INDICATED PERPENDICULAR TO FLOOR.
 - NEITHER ACCURACY NOR COMPLETION OF SERVICES AND UTILITIES ARE GUARANTEED BY THESE DRAWINGS. EXERCISE CAUTION AND IDENTIFY LOCATIONS OF EXISTING SERVICES AND UTILITIES IN FIELD, WHETHER OR NOT SHOWN ON DRAWINGS. EXERCISE CARE AND IDENTIFY WORK OF THIS SECTION. UTILITY LINES AS NECESSARY TO PERFORM WORK OF THIS SECTION.
 - MANUFACTURERS MODEL NUMBERS ARE SPECIFIED SOLELY TO ESTABLISH STANDARDS OF QUALITY FOR PERFORMANCE AND MATERIALS. PRODUCT INSTALLATION SHALL ADHERE TO MANUFACTURERS RECOMMENDATIONS.
 - PROVIDE ACCESS PANELS FOR EQUIPMENT THAT REQUIRES PERIODIC SERVICE.
 - PROVIDE HANGERS, INSERTS, ANCHORS, SUPPLEMENTAL STEEL, & SUPPORTS AS REQUIRED TO SUPPORT DUCTWORK, PIPING AND EQUIPMENT FROM STRUCTURE.
 - SCHEDULE WORK OF THIS SECTION TO AVOID INTERFERING WITH EXISTING OPERATIONS IN THE FACILITY.
 - COORDINATE ROOF PENETRATIONS WITH WORK OF OTHER SECTIONS. NOTIFY OWNER PRIOR TO STARTING WORK TO VERIFY COMPLIANCE WITH BOND AND WARRANTY OF EXISTING ROOF.
 - RAIN DUCTS AND PIPING CONCEALED, UNLESS OTHERWISE SPECIFIED AND CLEAR OF CEILING INSERTS.
 - INSTALL THERMOSTATS 4'-6" ABOVE FINISHED FLOOR OR AS DIRECTED OTHERWISE BY ARCHITECT.
 - STRUCTURAL WELDING SHALL BE CONTINUOUS 1/4" FILLET UNLESS REQUIRED OTHERWISE.
- AIR SYSTEMS**
- AIR SYSTEMS REFER TO ARCHITECTURAL REFLECTED CEILING PLANS FOR EXACT LOCATIONS OF AIR DEVICES.
 - INTERNAL AIRFLOW DIMENSIONS ARE SHOWN FOR DUCTS. INCREASE DUCT SIZE AS NECESSARY TO MAINTAIN FREE FLOW AREA INDICATED.
 - USE FLAT TRANSVERSE SEAM FOR DUCTWORK WHERE SPACE AVAILABLE DICTATES.
 - DAMPERS SIZES SHOWN ARE NECK SIZES. REGISTERS AND GRILLE SIZES ARE NOMINAL.
 - PROVIDE VOLUME DAMPERS OR OTHER APPROVED BALANCING DEVICES AT DUCT BRANCHES AND RUN OUTS, AND AT REGISTER GRILLE AND WHETHER SHOWN OR NOT.
 - DUCTWORK DOWNSTREAM OF ALL WY AND FAN POWERED WY BOXES SHALL BE ADJUSTABLY LINED WITH 1" ACOUSTICAL LINING FOR A MINIMUM OF 15 FEET.
 - PROVIDE 36" CLEARANCE IN FRONT OF ALL ELECTRIC CONTROL PANELS PER N.E.C. AND MFG. REQUIREMENTS.
 - PROVIDE DUCT TRANSITIONS FROM WY BOX INLET/OUTLET DUCT WORK AT SIZES INDICATED TO WY BOX INLET/OUTLET UNIT CONNECTIONS.
 - WY DUCT INLET SIZE SHALL BE AS SCHEDULED OR AS INDICATED ON DRAWINGS. PROVIDE DIMENSIONS FROM DUCT SIZE INDICATED ON DRAWINGS. DIMENSIONS TO SCHEDULED SIZE MINIMUM 2'-0" FROM WY BOX INLETS.
- PIPING SYSTEMS**
- PITCH PIPING 1" IN 20' IN DIRECTION OF FLOW.
 - PROVIDE TRAPS IN CONDENSATE LINES THAT EXTEND OVER 2'.



F:\P06000\F060106 - Landmark Mercy MOB\Drawings\Hvac\F060106.H1.00.dwg 11/17/06 4:30 PM TBranch

LANDMARK HEALTHCARE FACILITIES, LLC
 839 North Jefferson Street
 Milwaukee, Wisconsin 53202
 Telephone: (414) 277-0500
 Facsimile: (414) 277-1055

Francis

Cauffman

Foley

Hoffmann

Francis Cauffman 2120 Arch Street
 Foley Hoffmann Philadelphia, PA 19103
 Architects Ltd. 215-568-8250

STRUCTURAL ENGINEER
 ROBERT EDWARD CHESTER ASSOCIATES,
 119 COLTIER AVENUE
 333 ARMONIE, PA 18033
 P (610) 445-9570
 F (610) 445-9572
 W/E/P ENGINEER

AKF
architects
 150 WALNUT STREET, SUITE 1400
 PHILADELPHIA, PA 19102
 215-752-9700 TEL. 7431526/614 FAX
 A/E/P/NOI/NOI/NOI/NOI
 ADMINISTRATION: 215-752-9700
 ARCHITECTURE: 215-752-9700

Revision 11-20-06 CONSTRUCTION DOCUMENTS ISSUED

Sheet
 HVAC
 COVER SHEET

Project Title
Landmark Healthcare Facilities LLC
Fore River Medical Pavilion
Portland, Maine

Date
 NOVEMBER 20, 2006

Project Number
 F06-5103

Drawing Number

H1.00