

**LANDMARK  
HEALTHCARE  
FACILITIES, LLC**  
839 North Jefferson Street  
Milwaukee, Wisconsin 53202  
Telephone: (414) 277-0500  
Facsimile: (414) 277-1055

**Francis**

**Cauffman**

**Foley**

**Hoffmann**

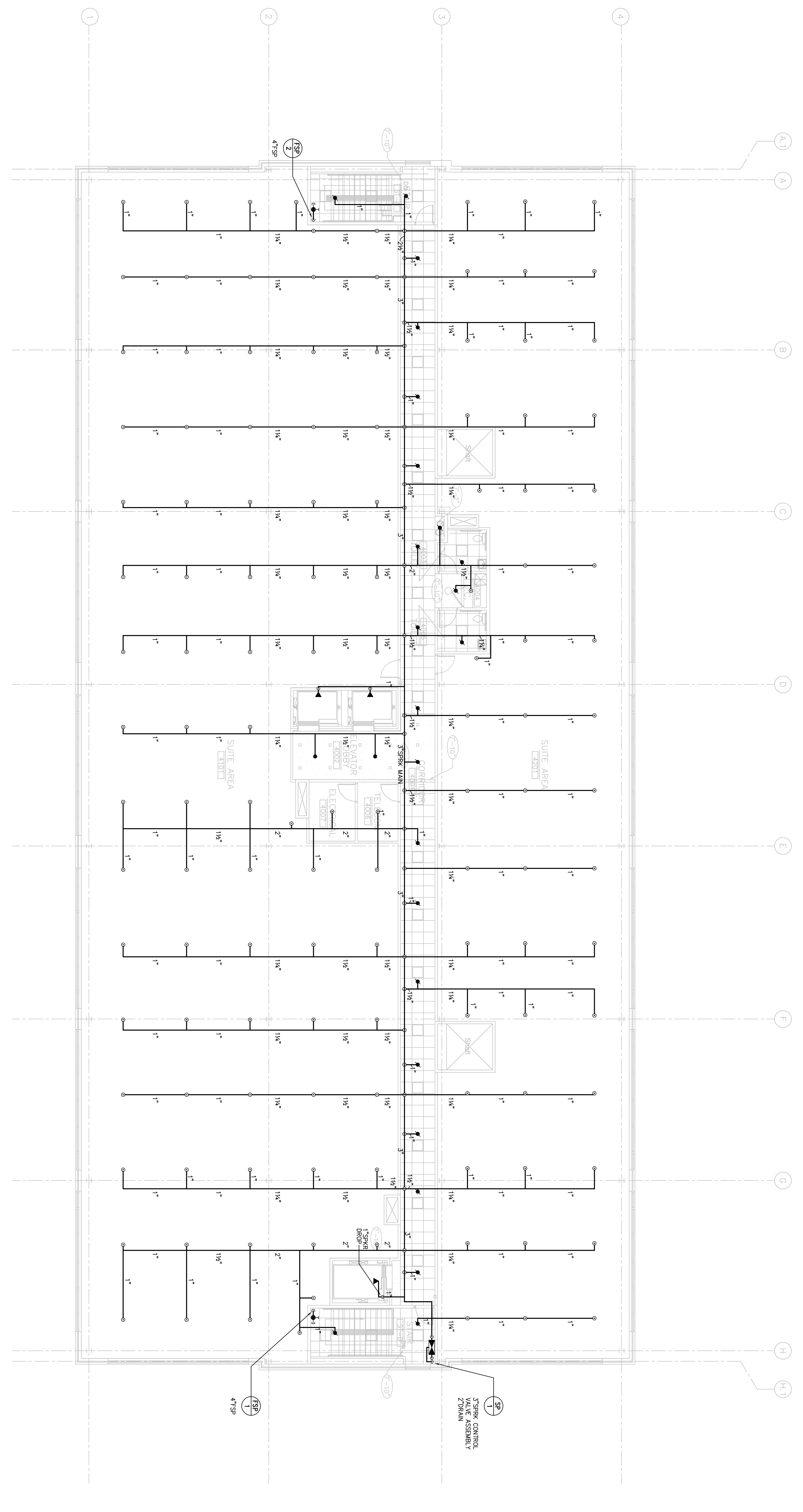
Francis Cauffman 2120 Arch Street  
Philadelphia, PA 19103  
Architects Ltd. 215-566-6250

STRUCTURAL ENGINEER  
ROBERT EDWARD CHESTER ASSOCIATES,  
119 COLTIER AVENUE  
ARLINGTON, PA 19003  
P (610) 445-9570  
F (610) 445-9572

**W/E/P ENGINEER**  
**ARKF**  
*e n g i n e e r s*

186 WALNUT STREET, SUITE 1400  
PHILADELPHIA, PA 19106  
215-252-7878 TEL. 215-516-0616 FAX  
A/E P/O/D NO. 000008  
ADMINISTRATIVE SERVICES AVAILABLE  
INTERNATIONAL SERVICE AVAILABLE

Revisions  
11-20-06 CONSTRUCTION DOCUMENTS ISSUED



**1** FOURTH FLOOR PLAN  
SCALE: 1/8"=1'-0"

Sheet

FIRE PROTECTION  
FOURTH FLOOR PLAN

Project Title  
**Landmark Healthcare  
Facilities LLC**

**Fore River Medical  
Pavilion  
Portland, Maine**

Date  
NOVEMBER 20, 2006

Project Number  
FO6-5103

Drawing Number

**FP2.04**