

Francis

Cauffman

Foley

Hoffmann

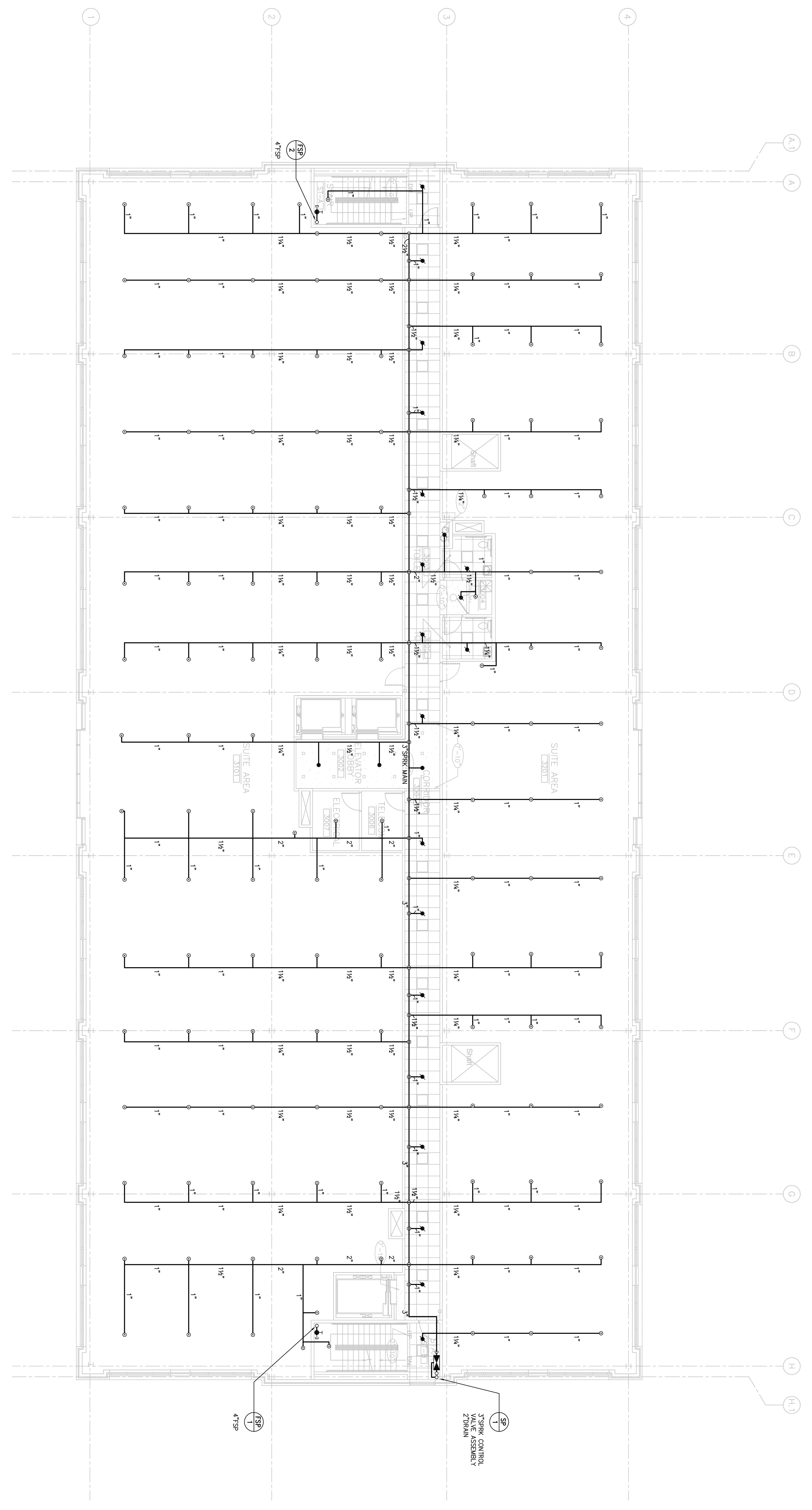
Francis Cauffman 2120 Arch Street
Philadelphia, PA 19103
Architects Ltd. 215-566-6250

STRUCTURAL ENGINEER
ROBERT EDWARD CHESTER ASSOCIATES,
119 COLTIER AVENUE
ARLINGTON, PA 19003
P (610) 445-9570
F (610) 445-9572

W/E/P ENGINEER
AKF

188 WALNUT STREET, SUITE 1400
PHILADELPHIA, PA 19106
215-251-7287 TEL. 215-516-0616 FAX
AKF PEOI NO. P090108
ADMINISTRATIVE SERVICES, INC. (AKF/STC)

Revisions
11-20-06 CONSTRUCTION DOCUMENTS ISSUED



1 THIRD FLOOR PLAN
SCALE: 1/8"=1'-0"

Sheet

FIRE PROTECTION
THIRD FLOOR PLAN

Project Title

Landmark Healthcare
Facilities LLC
Fore River Medical
Pavilion
Portland, Maine

Date
NOVEMBER 20, 2006

Project Number
FO6-5103

Drawing Number

FP2.03