

**LANDMARK  
HEALTHCARE  
FACILITIES, LLC**  
839 North Jefferson Street  
Milwaukee, Wisconsin 53202  
Telephone: (414) 277-4090  
Facsimile: (414) 277-1055

**Francis**

**Cauffman**

**Foley**

**Hoffmann**

Francis Cauffman 2120 Arch Street  
Foley Hoffmann Philadelphia, PA 19103  
Architects Ltd. 215-566-8250

STRUCTURAL ENGINEER  
ROBERT EDWARD CHESTER ASSOCIATES,  
119 COLTIER AVENUE  
SARASOTA, PA 19003  
P (610) 445-9570  
F (610) 445-9572

M/E/P ENGINEER

**AKF**

*e n g i n e e r s*

180 WALNUT STREET, SUITE 1400  
PHILADELPHIA, PA 19106  
215-251-7280 TEL. 215-516-0766 FAX  
215-516-0766  
ADMINISTRATIVE SERVICES: 215-516-0766  
ADMINISTRATIVE SERVICES: 215-516-0766

Revisions  
11-20-06 CONSTRUCTION DOCUMENTS ISSUED

Sheet

FIRE PROTECTION  
BASEMENT PLAN

Project Title

Landmark Healthcare  
Facilities LLC

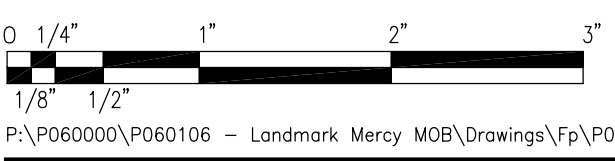
Fore River Medical  
Pavilion  
Portland, Maine

Date  
NOVEMBER 20, 2006

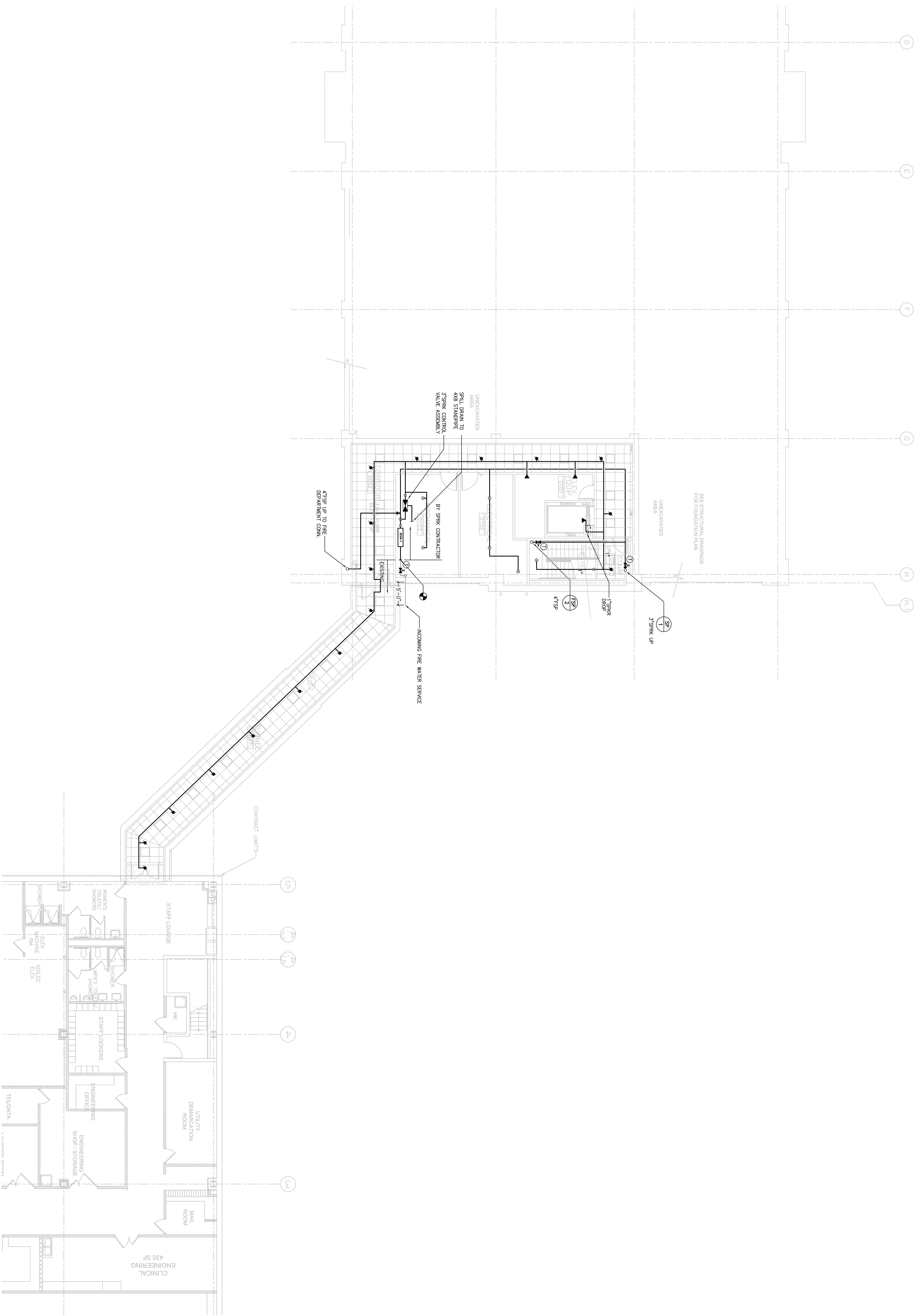
Project Number  
FO6-5103

Drawing Number

FP2.00



F:\P06000\F060106 - Landmark Mercy MOB\Drawings\FP\F060106.FP2.00.dwg 11/17/06 4:31 PM TBlanca



**1** BASEMENT PLAN  
SCALE: 1/8" = 1'-0"