

**Francis  
Caulfman  
Foley  
Hoffmann**

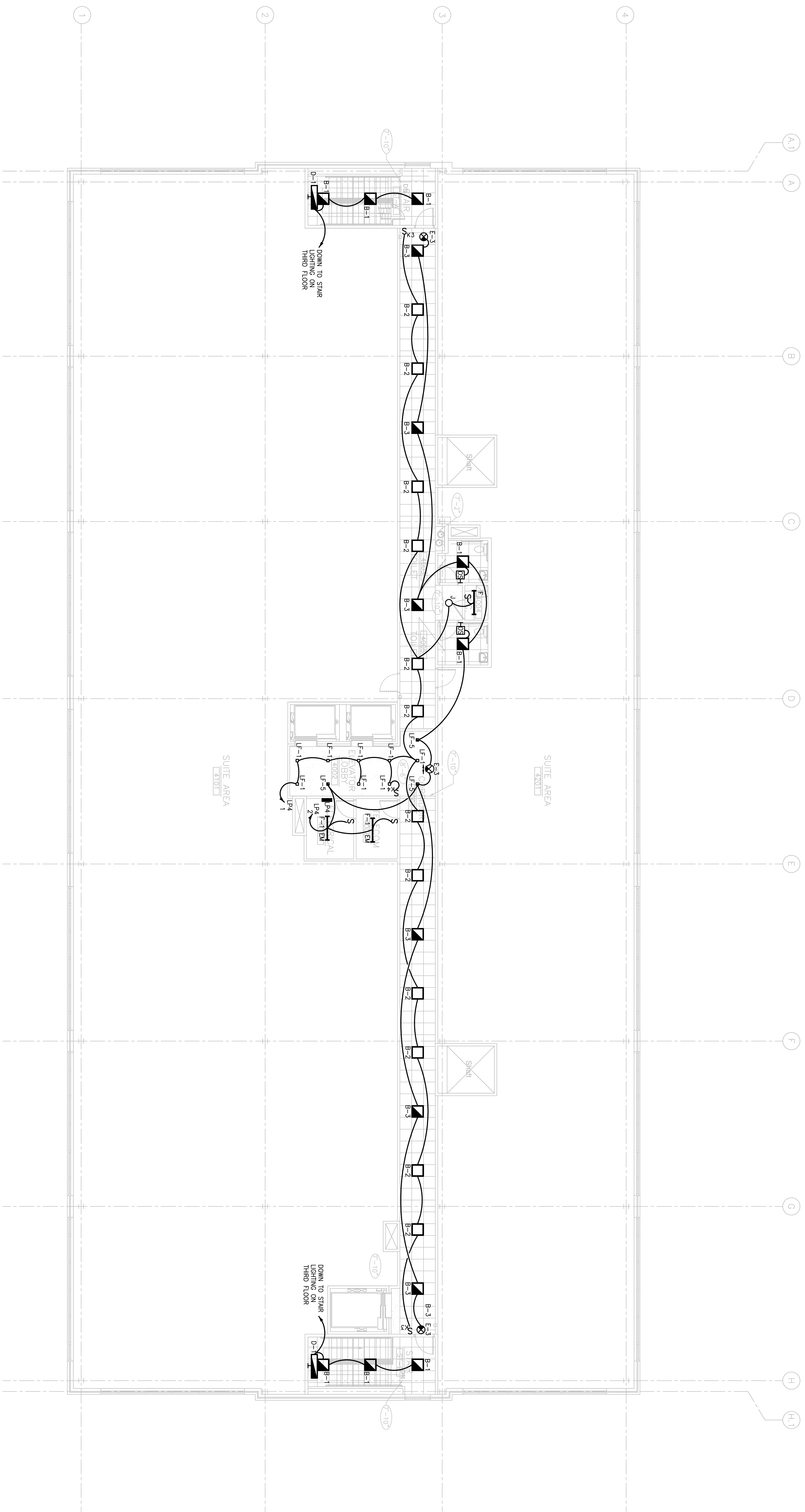
Francis Caulfman 2120 Arch Street  
Portland, Maine 04103  
Architects Ltd. 215-588-8250

STRUCTURAL ENGINEER  
RICHARD W. HOFFMANN ASSOCIATES  
105 COLLEGE AVENUE  
SUITE 175 PORTLAND, ME 04103  
P (603) 645-9570  
F (610) 645-9572

M/E/P ENGINEER  
**AKF**

*engineers*  
**AKF**  
215-550-9010  
PHILADELPHIA, PA 19106  
ANNAPOLIS, MD 21403  
ARLINGTON, VA 22204  
ARLINGTON, VIRGINIA - HEADQUARTERS  
ANNAPOLIS - STAMFORD - MEMPHIS

Revisions  
11-20-06 CONSTRUCTION DOCUMENTS ISSUED



**1** FOURTH FLOOR PLAN  
SCALE: 1/8"=1'-0"

- DRAWING NOTES:**
1. REFER TO ARCHITECTURAL REFLECTED CEILING PLAN FOR EXACT LOCATION OF LIGHT FIXTURES
  2. REFER TO E3.00 FOR LIGHTING FIXTURE SCHEDULE.

Project Title  
**Landmark Healthcare  
Facilities LLC**  
Fore River Medical  
Pavilion  
Portland, Maine

Date  
NOVEMBER 20, 2006

Project Number  
FO6-5103

Drawing Number

**E3.04**