

**Francis
Caufman
Foley
Hoffmann**

Francis Cauffman 2120 Arch Street
Portland, ME 04103
Telephone: (414) 277-4500
Architects Ltd. 215-588-8250

STRUCTURAL ENGINEER
FRANCIS CAUFFMAN & ASSOCIATES
SUITE 175
1100 WASHINGTON AVENUE
PORTLAND, ME 04103
P (610) 645-9570
F (610) 645-9572

M/E/P ENGINEER
AKF
engineers
2155 S. 20TH STREET, SUITE 1400
PHILADELPHIA, PA 19103
TEL: (215) 262-2200 FAX: 215-262-2206
ANNAPOLIS - NEW YORK - FORT LAUDERDALE
ARLINGTON - STAMFORD - BIRMINGHAM

Revisions
11-20-06
CONSTRUCTION DOCUMENTS ISSUED

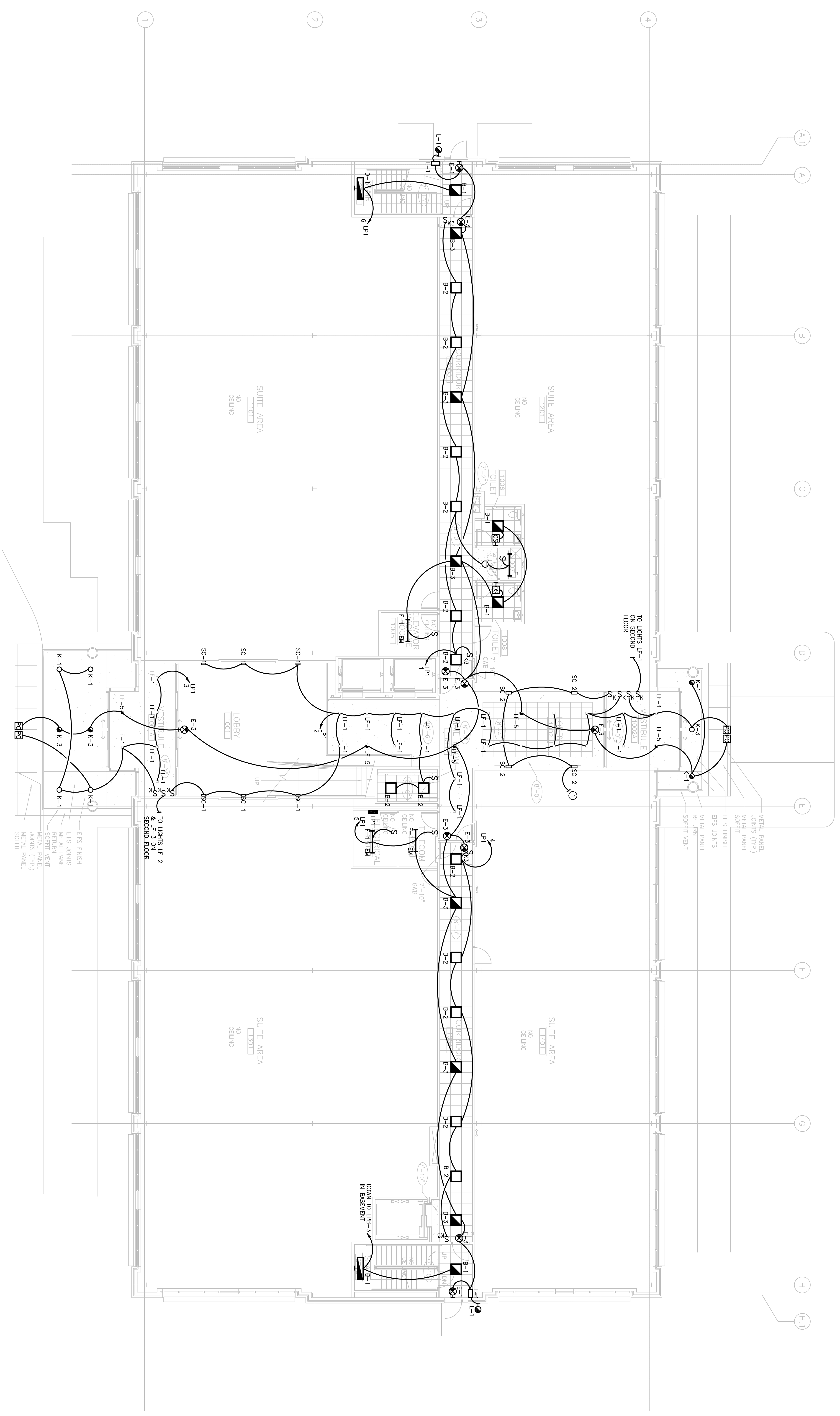
Sheet
ELECTRICAL
FIRST FLOOR PLAN - LIGHTING

Project Title
**Landmark Healthcare
Facilities LLC**
Fore River Medical
Pavilion
Portland, Maine

Date
NOVEMBER 20, 2006

Project Number
FO6-5103

Drawing Number
E3.01



1 FIRST FLOOR PLAN
SCALE: 1/8"=1'-0"

- DRAWING NOTES:**
- REFER TO ARCHITECTURAL REFLECTED CEILING PLAN FOR EXACT LOCATION OF LIGHT FIXTURES
 - REFER TO E3.00 FOR LIGHTING FIXTURE SCHEDULE.

- KEYNOTES:**
- ① CONNECT LIGHTING CIRCUIT TO PANEL RPT-6