

**Francis**  
**Cauffman**  
**Foley**  
**Hoffmann**

Francis Cauffman  
2120 Arch Street  
Portland, ME 04103  
Architects Ltd.  
215-568-8260

STRUCTURAL ENGINEER  
FRANCIS CAUFFMAN & ASSOCIATES  
109 COLLEGE AVENUE  
SUITE 175  
PORTLAND, ME 04103  
P (603) 644-8570  
F (610) 645-9572

M/E/P ENGINEER  
**AKF**  
*engineers*  
215 WESTERN AVENUE, SUITE 1400  
PHILADELPHIA, PA 19102  
TEL: (215) 562-7000  
FAX: (215) 562-7006  
ANNAPOLIS - NEW YORK - NEW ORLEANS  
PHILADELPHIA - PORTLAND - WASHINGTON

Revisions  
11-20-06 CONSTRUCTION DOCUMENTS ISSUED

Sheet  
ELECTRICAL  
BASEMENT PLAN - LIGHTING

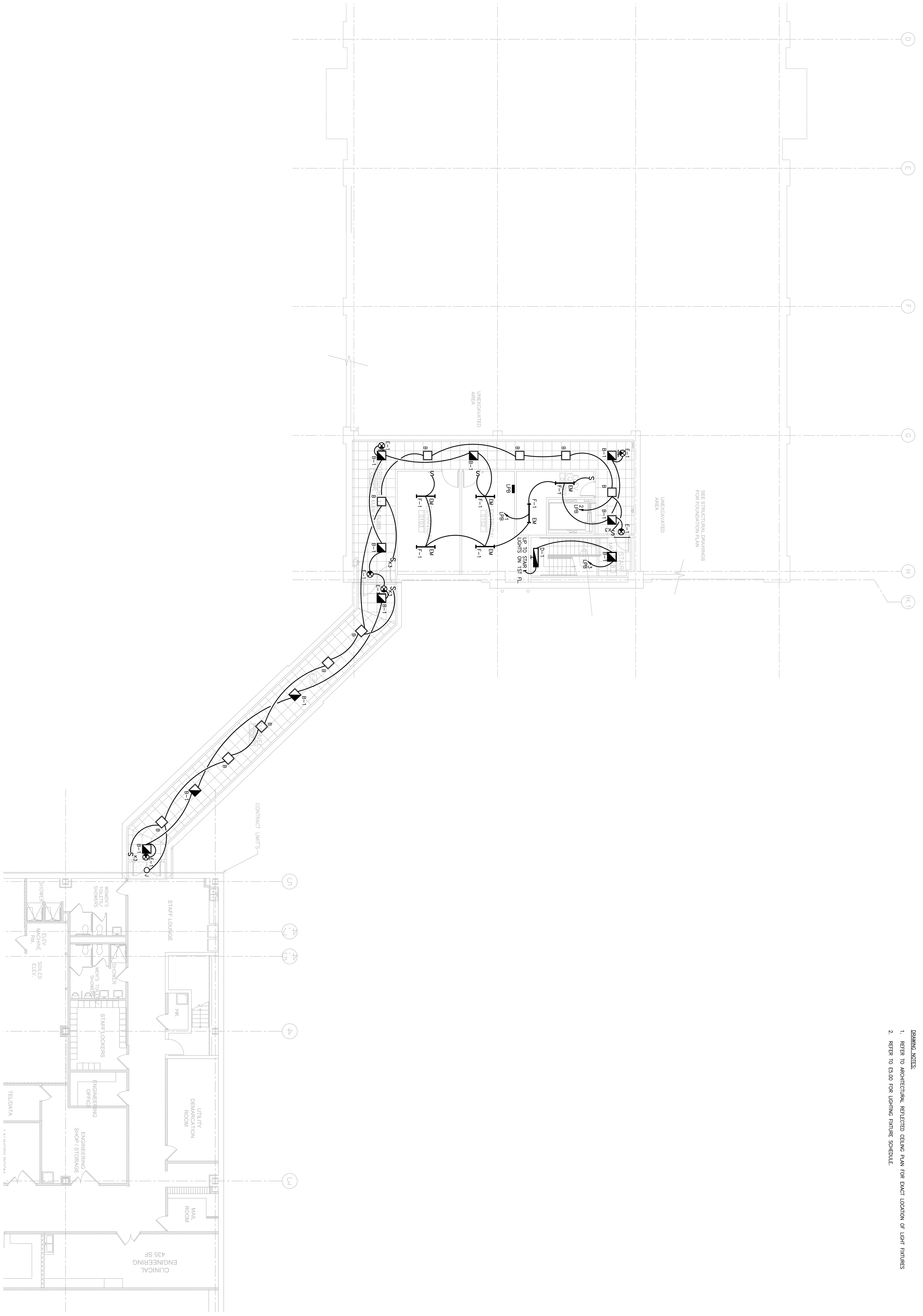
Project Title  
**Landmark Healthcare  
Facilities LLC**  
**Fore River Medical  
Pavilion**  
Portland, Maine

Date  
NOVEMBER 20, 2006

Project Number  
F06-5103

Drawing Number  
**E3.00**

- DRAWING NOTES:**
- REFER TO ARCHITECTURAL REFERENCED CEILING PLAN FOR EXACT LOCATION OF LIGHT FIXTURES
  - REFER TO E300 FOR LUMINA FIXTURE SCHEDULE.



**1** BASEMENT PLAN  
SCALE: 1/8"=1'-0"