

**LANDMARK
HEALTHCARE
FACILITIES, LLC**

830 North Jefferson Street
 Portland, ME 04103
 Telephone: (414) 277-4500
 Facsimile: (414) 277-1055

Francis

Cauffman

Foley

Hoffmann

Francis Cauffman 2120 Arch Street
 Portland, ME 04103
 Architects Ltd. 215-588-8250

STRUCTURAL ENGINEER
 FRANCIS CAUFFMAN ARCHITECTS ASSOCIATES
 105 COLUMBIA AVENUE
 SUITE 175 PORTLAND, ME 04103
 P (603) 645-8570
 F (610) 645-9572

M/E/P ENGINEER

AKF

engineers
 215 WESTERN AVENUE, SUITE 1400
 PHILADELPHIA, PA 19104
 215-552-9070 TEL. 215-552-0666 FAX
 215-552-0200
 PORTLAND - NEW YORK - PHILADELPHIA
 BOSTON - STAMFORD - MEMPHIS

Revisions
 11-20-06 CONSTRUCTION DOCUMENTS ISSUED

Sheet
 ELECTRICAL
 ROOF PLAN - POWER

Project Title

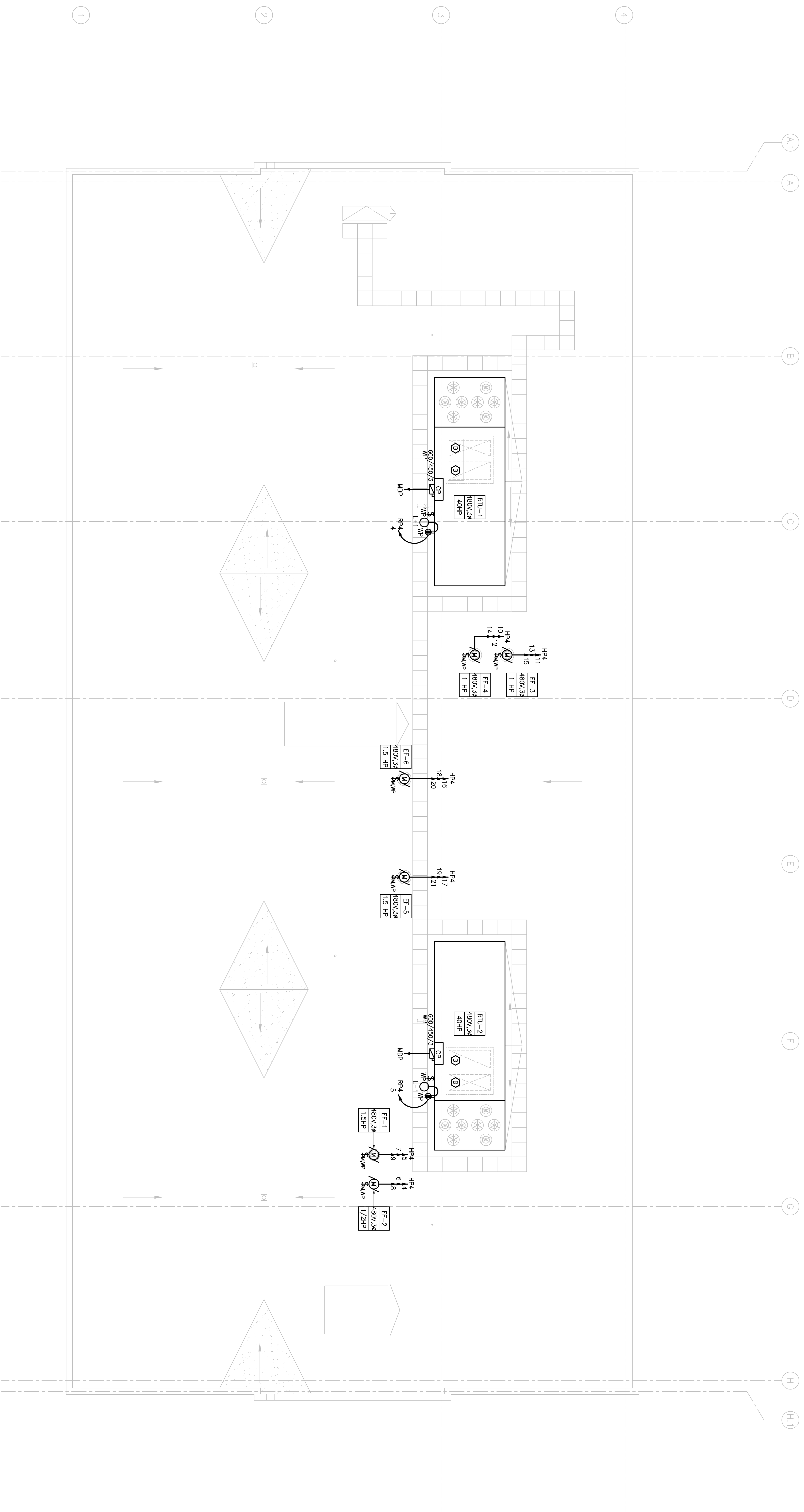
**Landmark Healthcare
 Facilities LLC**
 Fore River Medical
 Pavilion
 Portland, Maine

Date
 NOVEMBER 20, 2006

Project Number
 F06-5103

Drawing Number

E2.05



1
 ROOF PLAN
 SCALE: 1/8"=1'-0"

