

**Francis  
Cautfman  
Foley**

**Hoffmann**

Francis Cautfman 2120 Arch Street  
Portland, Maine 04103  
Telephone: (414) 277-4500  
Facsimile: (414) 277-1055

STRUCTURAL ENGINEER  
ROBERTSON ENGINEERS ASSOCIATES  
105 COLLEGE AVENUE  
SUITE 175 PORTLAND, ME 04103  
P (610) 645-9570  
F (610) 645-9572

M/E/P ENGINEER  
**AKF**  
*engineers*  
2155 S. 20th Street, Suite 1400  
PHILADELPHIA, PA 19103  
TEL: (215) 262-0900 FAX: (215) 262-0906  
ANNAPOLIS - NEW YORK - PHILADELPHIA  
ARLINGTON - STAMFORD - MEMPHIS

Revisions  
11-20-06 CONSTRUCTION DOCUMENTS ISSUED

Sheet  
ELECTRICAL  
FOURTH FLOOR PLAN - POWER

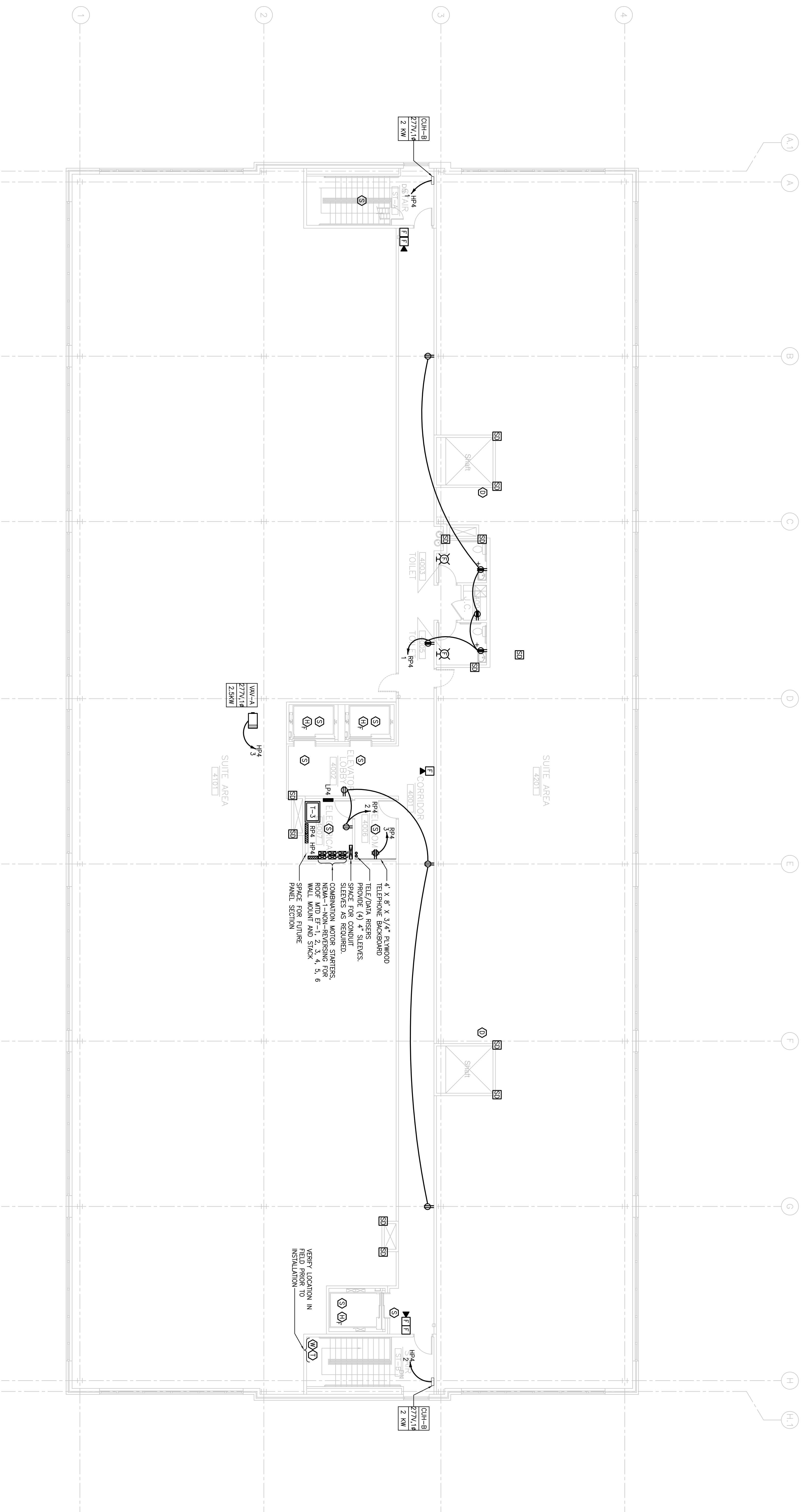
Project Title  
**Landmark Healthcare  
Facilities LLC**  
Fore River Medical  
Pavilion  
Portland, Maine

Date  
NOVEMBER 20, 2006

Project Number  
FO6-5103

Drawing Number

**E2.04**



**1** FOURTH FLOOR PLAN  
SCALE: 1/8"=1'-0"