

**Francis
Caulfman
Foley
Hoffmann**

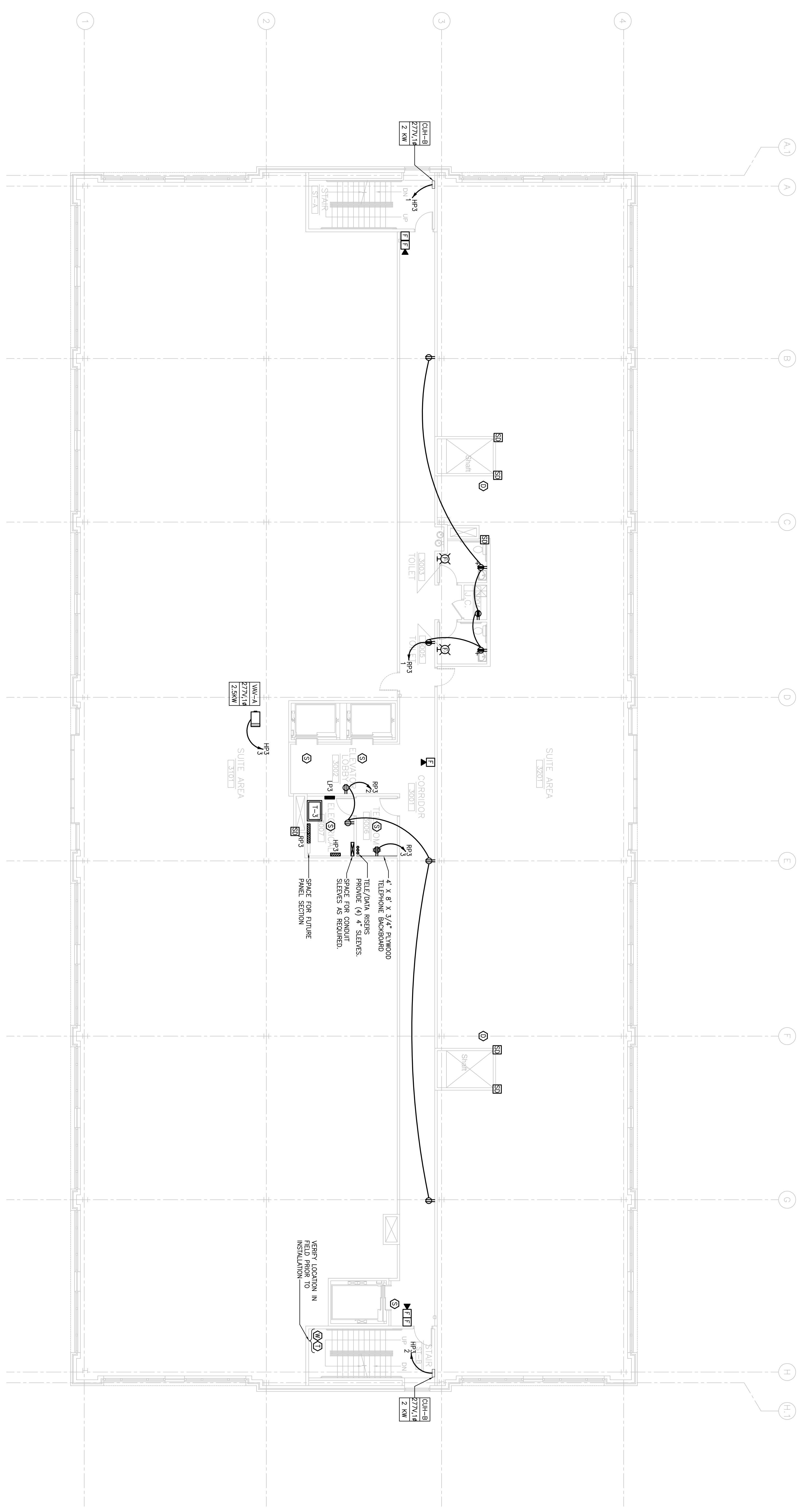
Francis Caulfman 2120 Arch Street
 Portland, Maine 04103
 Architects Ltd. 215-588-8250

STRUCTURAL ENGINEER
 FRANCIS CAULFMAN ASSOCIATES
 100 COLLEGE AVENUE
 SUITE 175 PORTLAND, ME 04103
 P (610) 645-8570
 F (610) 645-8572

M/E/P ENGINEER
AKF

engineers
AKF
 215 WESTON BLVD. SUITE 1400
 PHILADELPHIA, PA 19102
 215-583-9000 TEL. 215-583-0966 FAX
 1000 MARKET STREET, SUITE 1000
 PHILADELPHIA, PA 19102
 215-583-9000 TEL. 215-583-0966 FAX
 PORTLAND - SEASIDE - BOSTON
 PHILADELPHIA - NEW YORK - MIAMI - HOUSTON
 PHOENIX - STAMFORD - MEMPHIS

Revisions
 11-20-06 CONSTRUCTION DOCUMENTS ISSUED



1 THIRD FLOOR PLAN
 SCALE: 1/8"=1'-0"