

**Francis
Caufman
Foley
Hoffmann**

Francis Cauffman 2120 Arch Street
Portland, Maine 04103
Architects Ltd. 215-588-8250

STRUCTURAL ENGINEER
RICHARD W. HOFFMANN ASSOCIATES
105 COLLEGE AVENUE
SUITE 175 PORTLAND, ME 04103
P (603) 645-8570
F (610) 645-9572

M/E/P ENGINEER
AKF

engineers
AKF
215 WESTERN AVENUE, SUITE 1400
PHILADELPHIA, PA 19103
TEL: 215-562-7000 FAX: 215-562-7001
ANNAPOLIS - NEW YORK - PHILADELPHIA
PRINCETON - STAMFORD - WASHINGTON

Revisions
11-20-06 CONSTRUCTION DOCUMENTS ISSUED

Sheet
ELECTRICAL
SECOND FLOOR PLAN - POWER

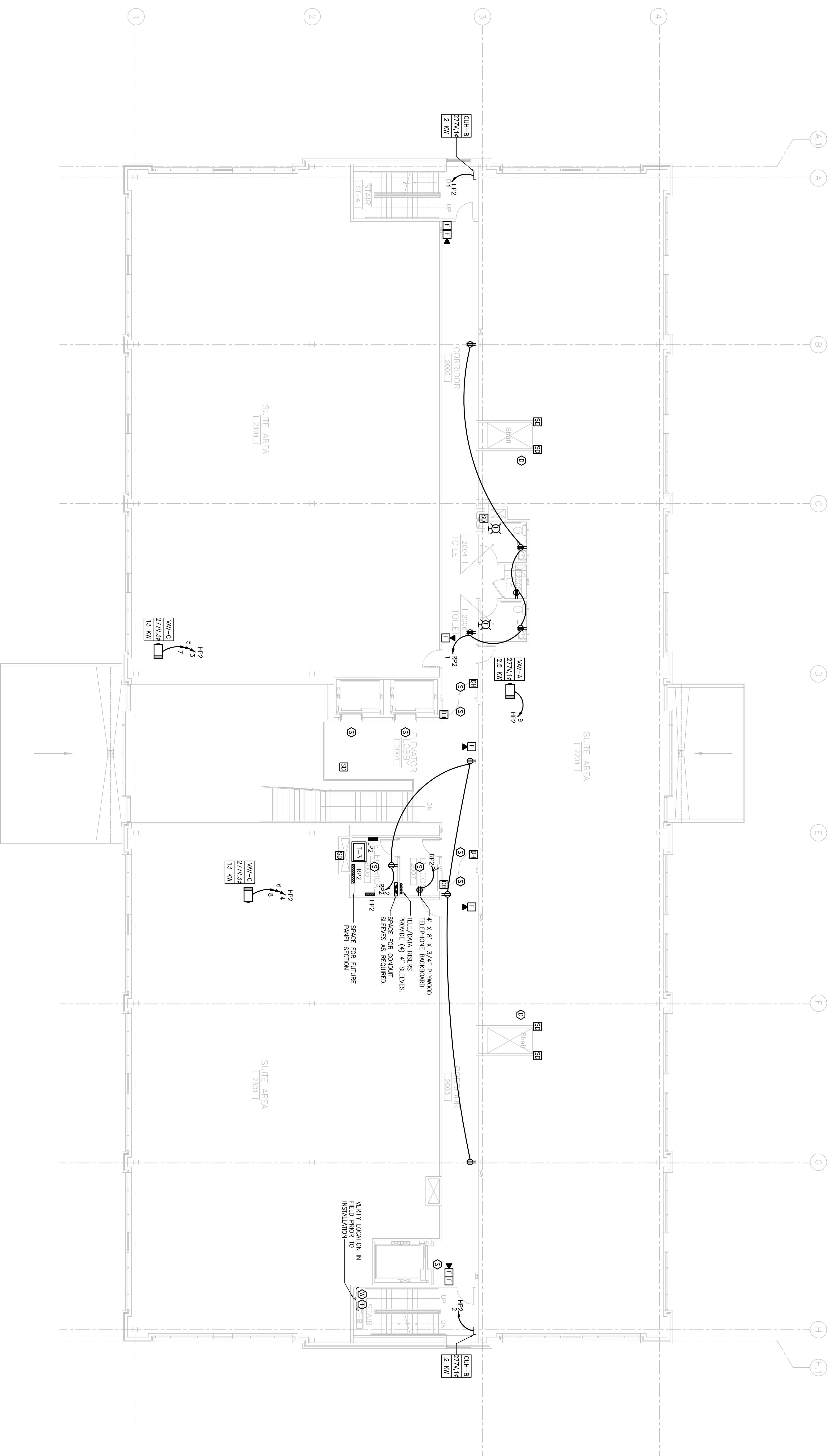
Project Title
**Landmark Healthcare
Facilities LLC**
Fore River Medical
Pavilion
Portland, Maine

Date
NOVEMBER 20, 2006

Project Number
FO6-5103

Drawing Number

E2.02



1 SECOND FLOOR PLAN
SCALE: 1/8"=1'-0"