

**Francis
Cautfman
Foley
Hoffmann**

2120 Arch Street
Portland, ME 04103
Architects Ltd.
215-588-8250

STRUCTURAL ENGINEER
RICHARDSON ENGINEERS ASSOCIATES
109 COLLEGE AVENUE
SUITE 175
PORTLAND, ME 04103
P (603) 644-8970
F (610) 645-9572

M/E/P ENGINEER
AKF
engineers
2155 S. 20TH STREET, SUITE 1400
PHILADELPHIA, PA 19103
TEL: (215) 381-1000
FAX: (215) 381-1001
ALBANY - NEW YORK - BIRMINGHAM
ANNAPOLIS - STAMFORD - WASHINGTON

Revisions
11-20-06
CONSTRUCTION DOCUMENTS ISSUED

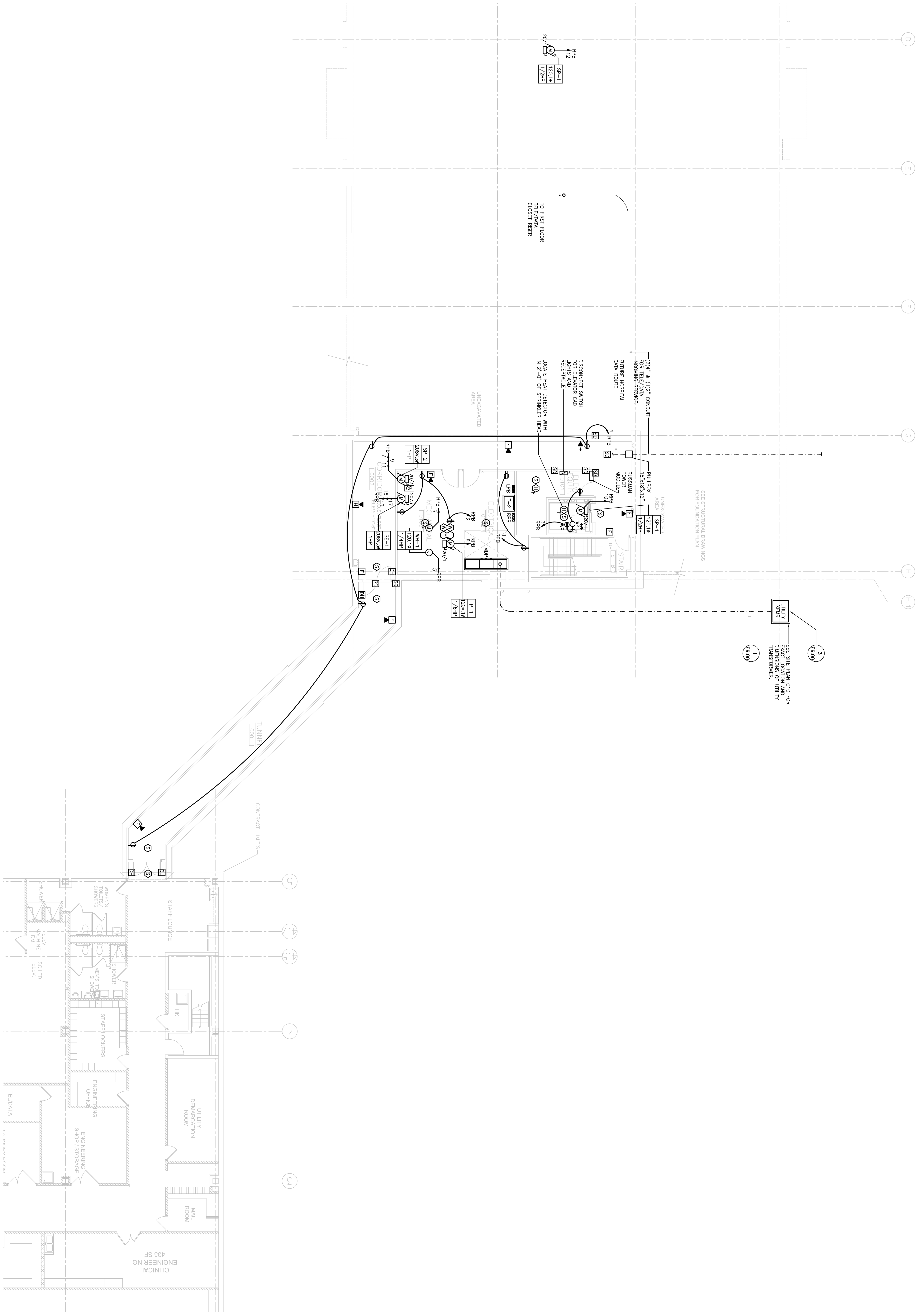
Sheet
ELECTRICAL
BASEMENT PLAN - POWER

Project Title
**Landmark Healthcare
Facilities LLC**
Fore River Medical
Pavilion
Portland, Maine

Date
NOVEMBER 20, 2006

Project Number
F06-5103

Drawing Number
E2.00



1
BASEMENT PLAN
SCALE: 1/8"=1'-0"