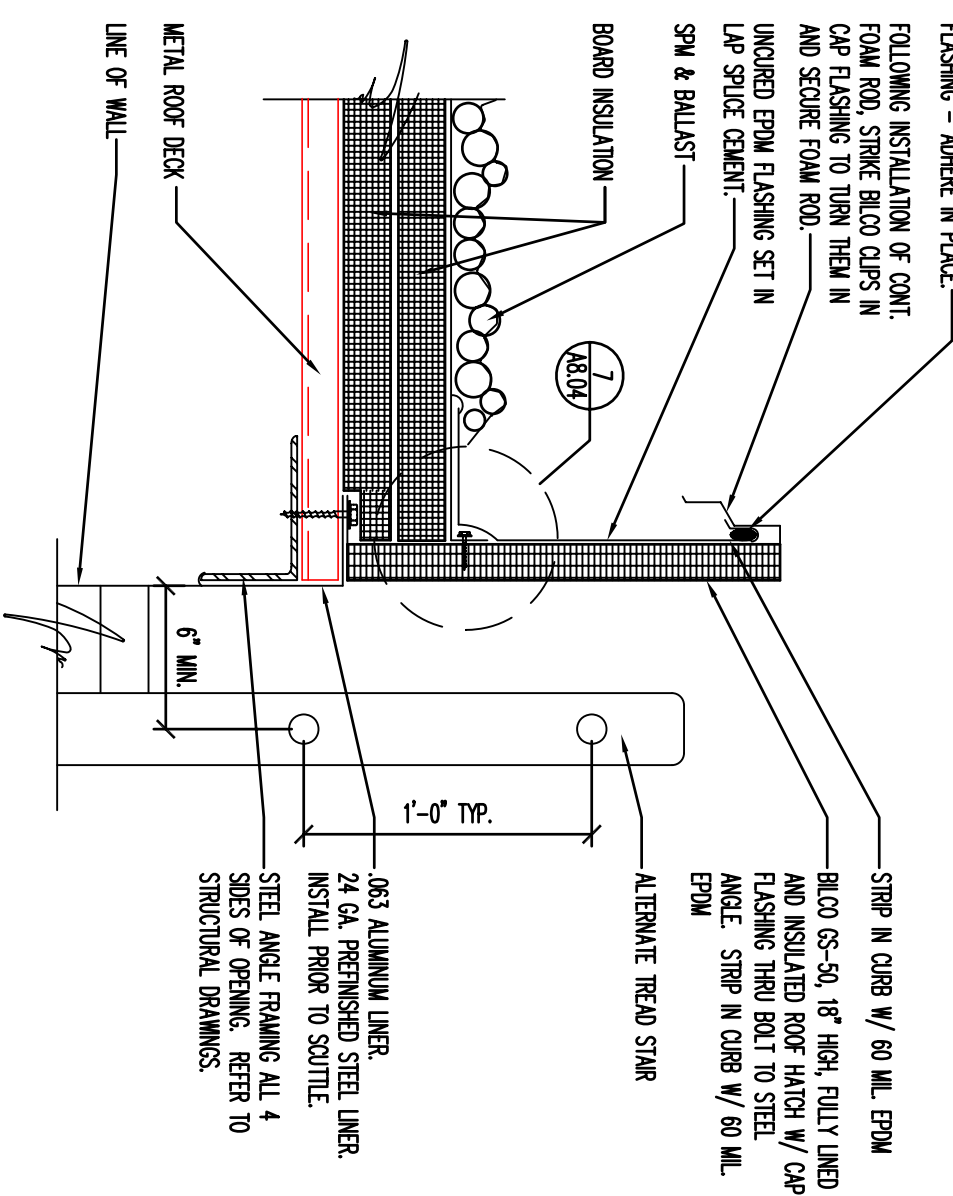
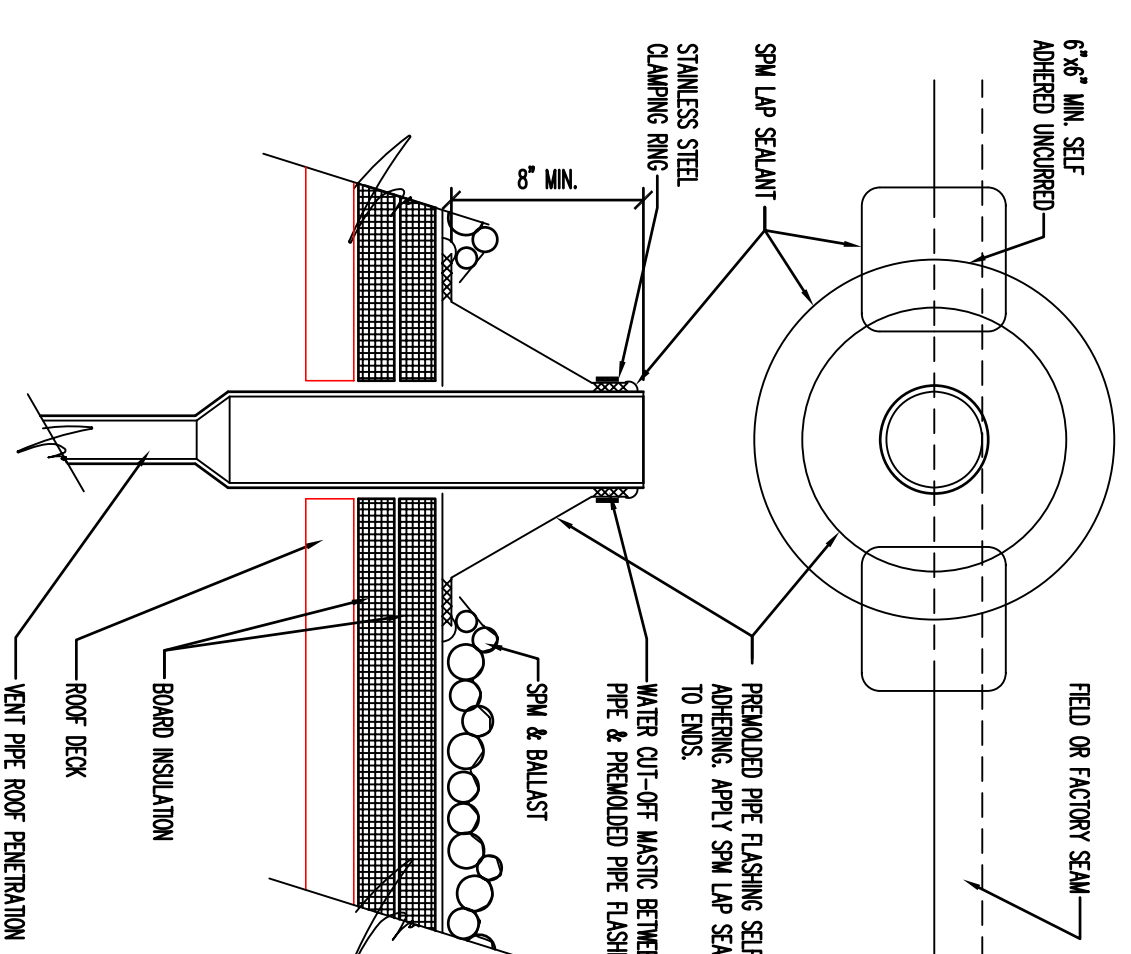


NOTE: 1. SHEET METAL CONNECTION TO METAL LIME PLASTER TO ROOF SLOTTED INSULATION. SCALE: F.S. THE SCOTTING TO BE REPEATED W/ NEW.



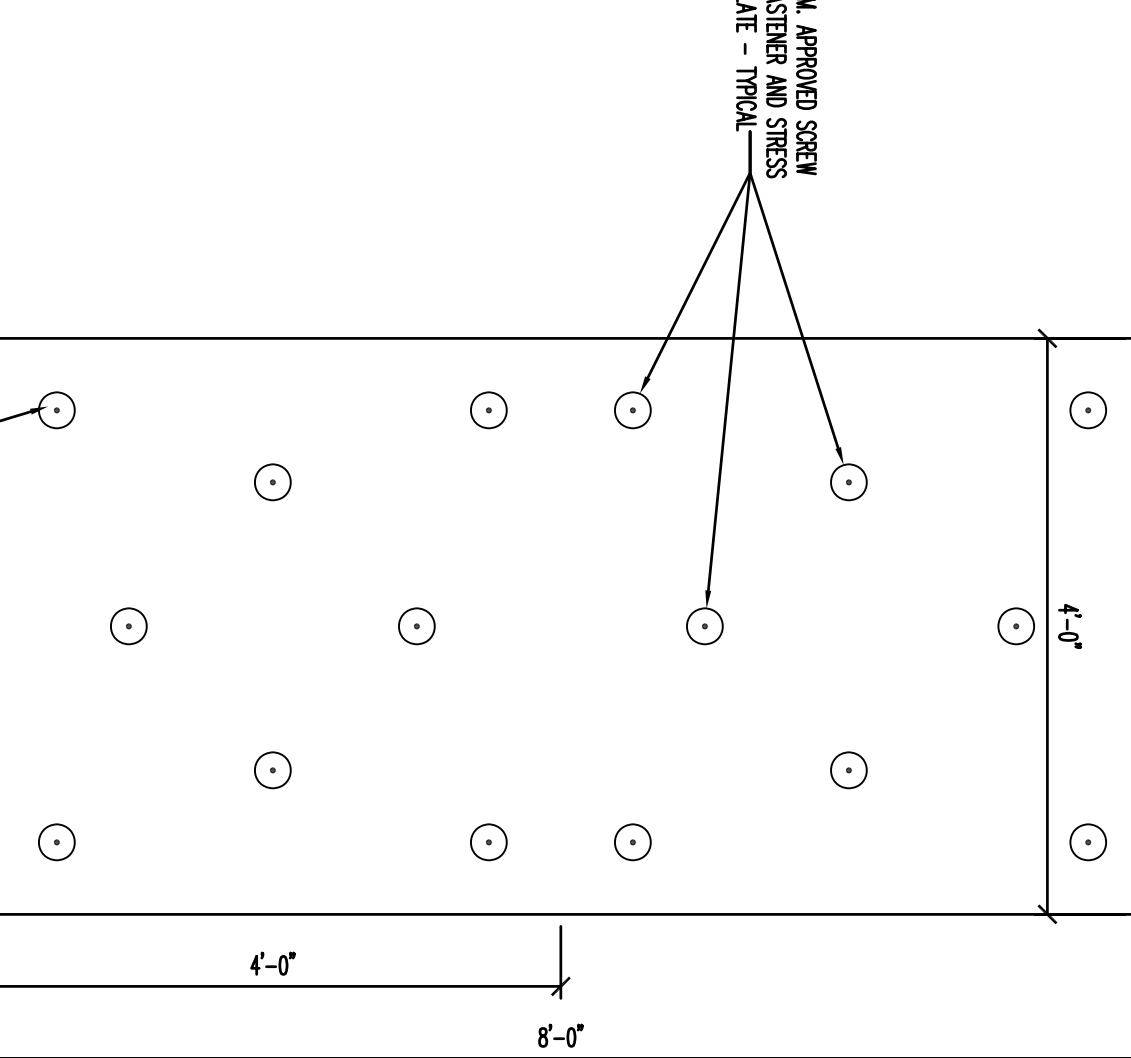
1 ROOF HATCH CURB DETAIL
ASB.04 1 1/2"=1'-0"

NOTE: 1. FLANGE OF PRECASTED ROOF FALLS ON RED SPM. APPLY EPDM PATCH.



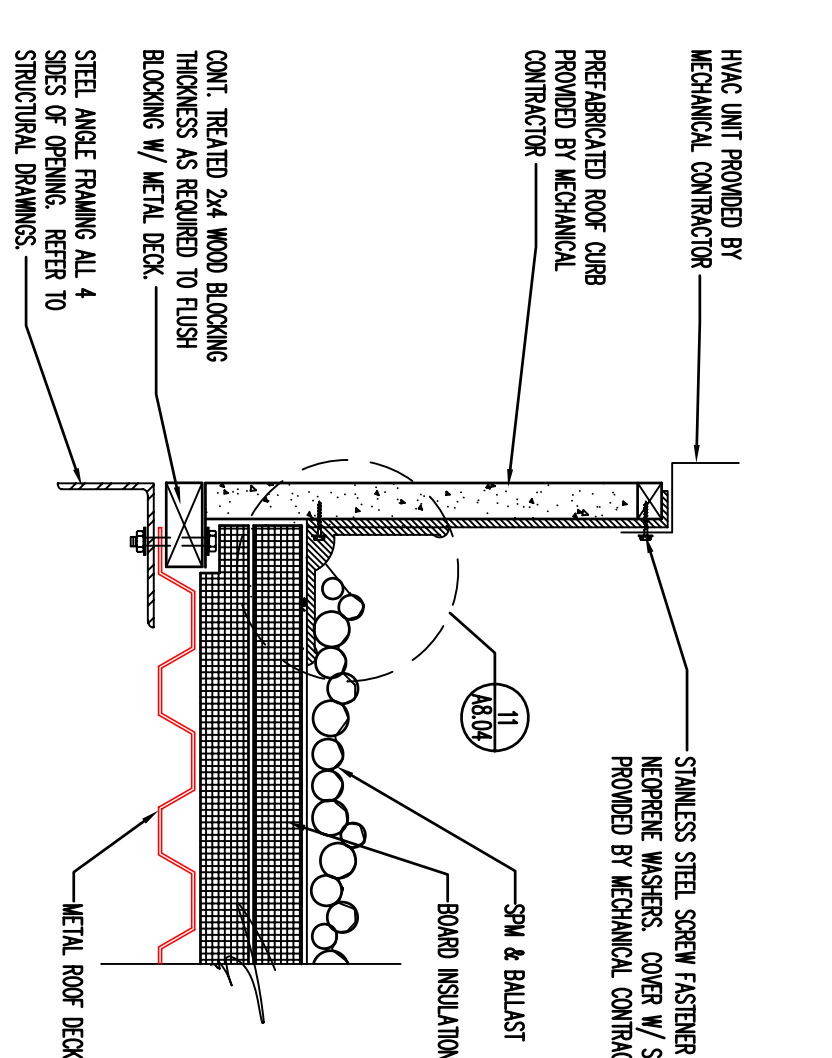
2 VENT PIPE DETAIL
ASB.04 1 1/2"=1'-0"

NOTE: 1. LOCATE FASTENERS PER INSULATION MANUFACTURER'S RECOMMENDATIONS. 2. SEAM FASTENERS TO BE INSTALLED 18" UP OF METAL FLUES & METAL DECK.



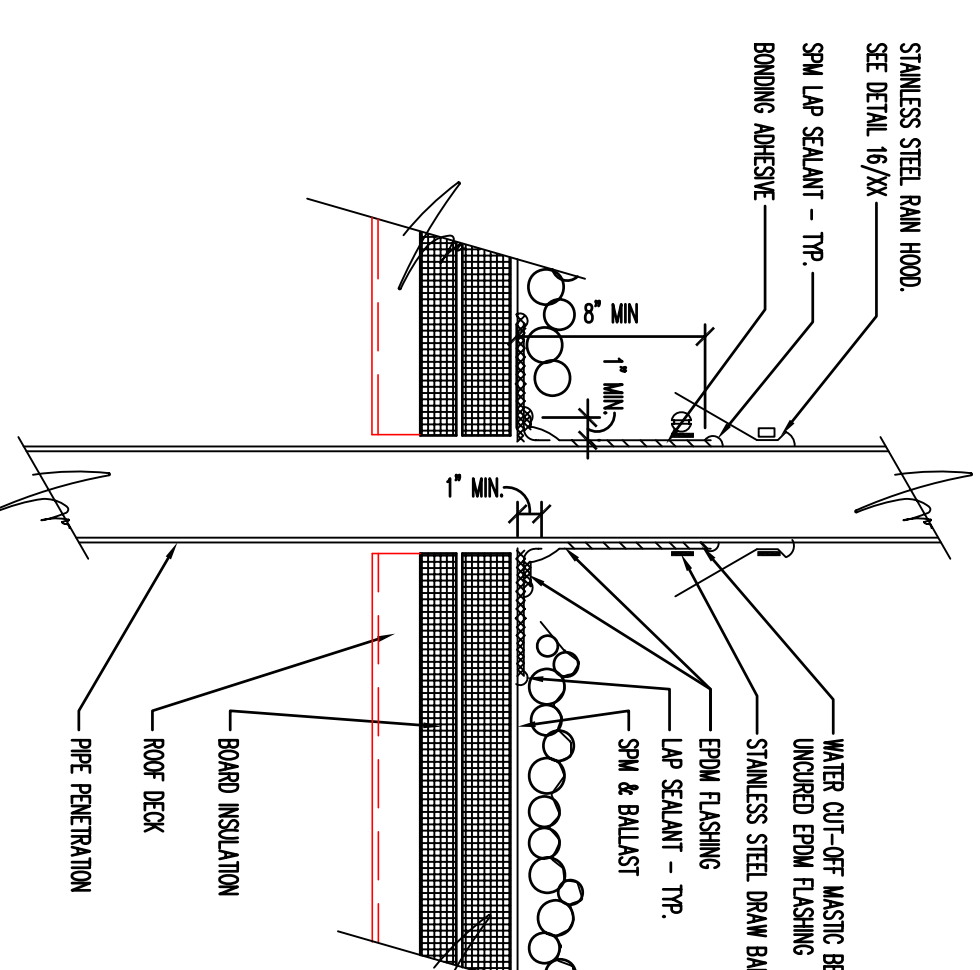
3 INSULATION FASTENING PATTERN
ASB.04 1 1/2"=1'-0"

NOTE: 1. COMPONENT WITH HVAC AND STRUCTURAL CONSULTANT DETAILS. 2. CLIM PREC OF EPDM MEMBRANE.



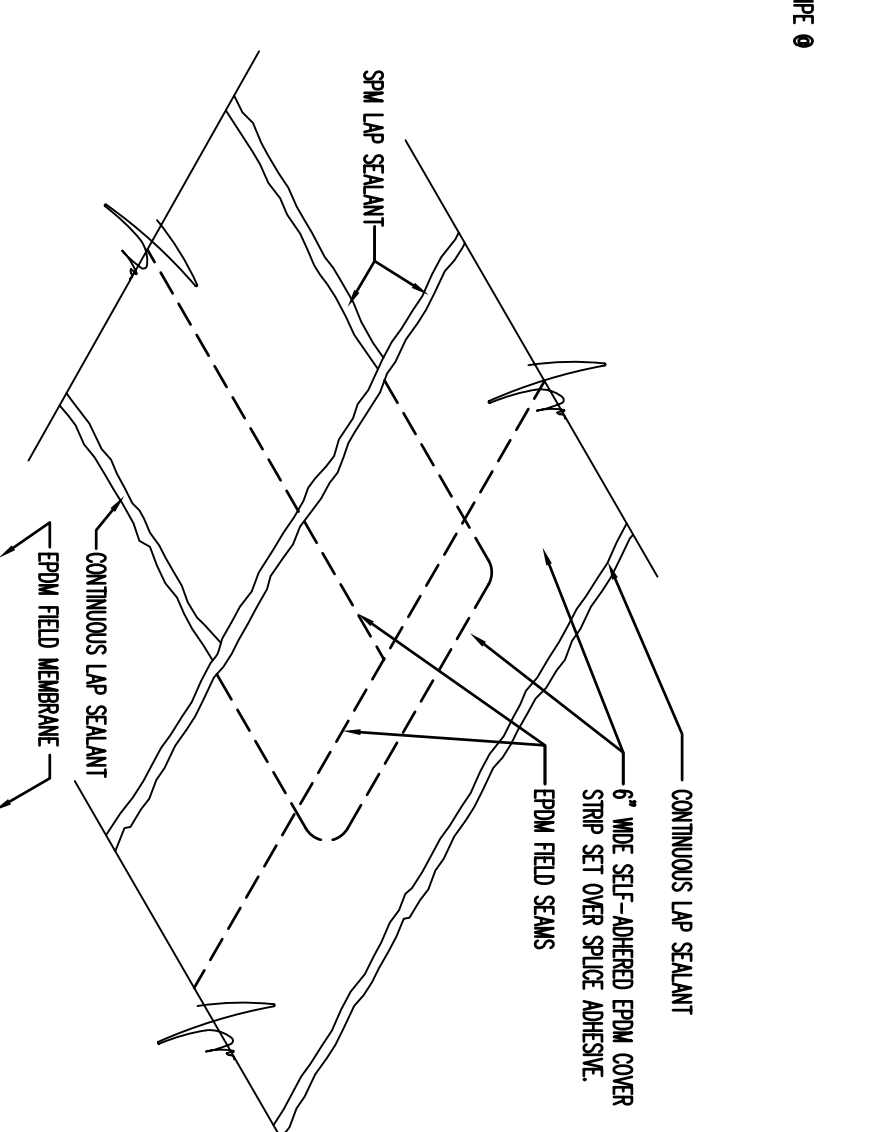
4 HVAC UNIT CURB DETAIL
ASB.04 1 1/2"=1'-0"

NOTE: 1. ALL CORNERS OF EPDM MEMBRANE ARE TO BE ROUNDED. 2. CLIM PREC OF EPDM MEMBRANE.



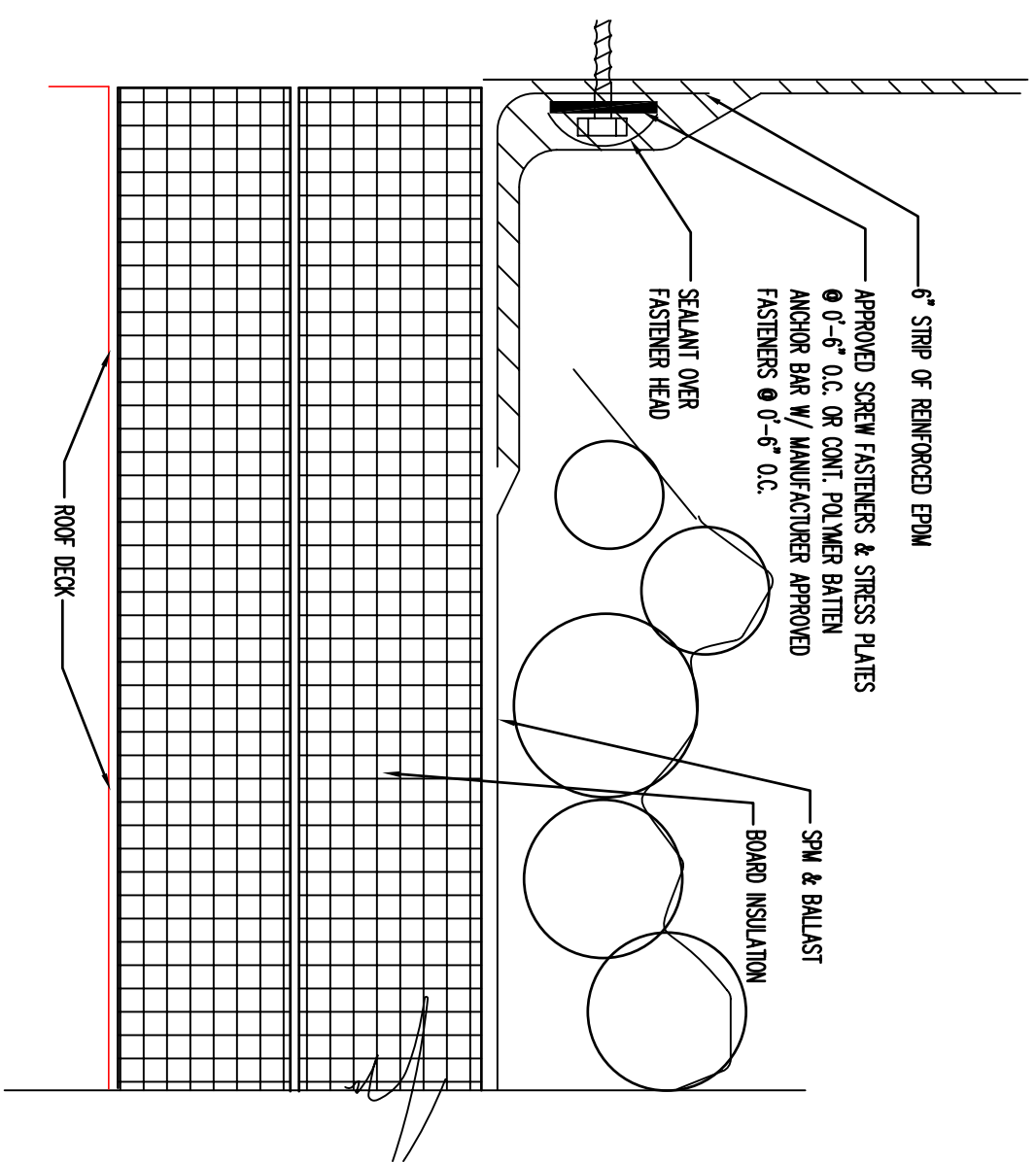
5 PIPE PENETRATION DETAIL
ASB.04 1 1/2"=1'-0"

NOTE: 1. BALUST CLIMTED FOR CLIMTED. 2. ALL UP STAIRS TO BE STORMED IN WEATHER STICK MEMBRANE TO SHEET METAL. 3. WIND UP STAIRS W/ WATER FOLLOWED BY SPACE WINDING TO REMAIN COMPLIANT.



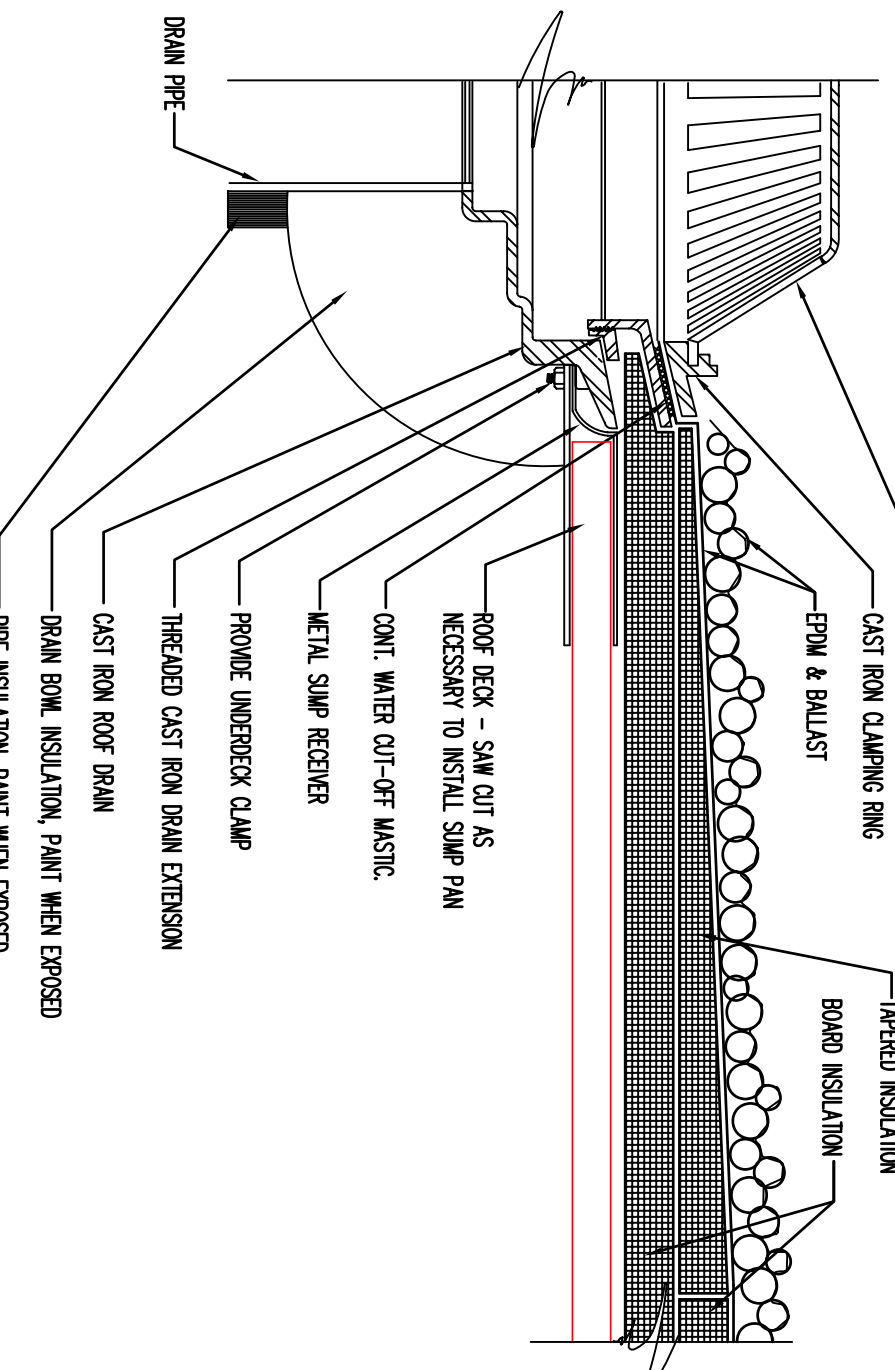
6 LAP SEAM COVER STRIP DETAIL
ASB.04 1 1/2"=1'-0"

NOTE: 1. ON ROOF CORERS ALL CORNERS TO BE FLASHED W/ 2 LAYERS OF UNBROKEN EPDM.



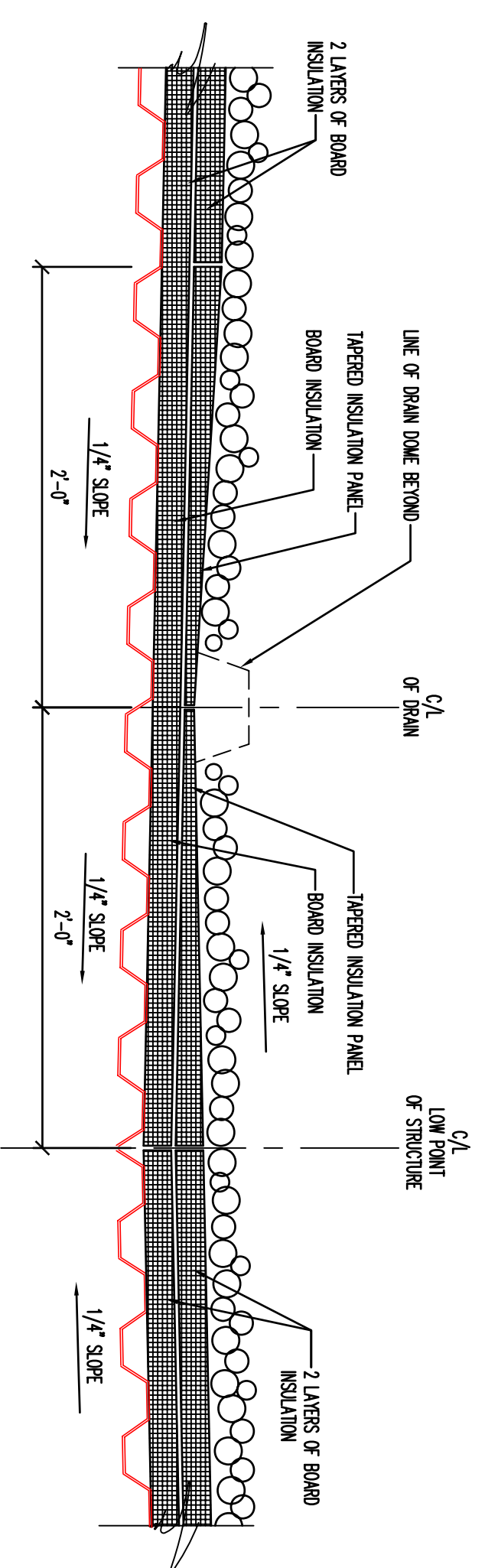
7 TYPICAL SPM ANCHOR DETAIL
ASB.04 6"=1'-0"

NOTE: 1. SLOTTED ROOF TOP EDGE OF INSULATION & INSERT UNDER ROOF FLASHING. 2. CUT THROUGH INSULATION TO MATCH FLASHING. 3. CUT THROUGH INSULATION PERPENDICULAR TO ROOF FLASHING. - DO NOT BEG.



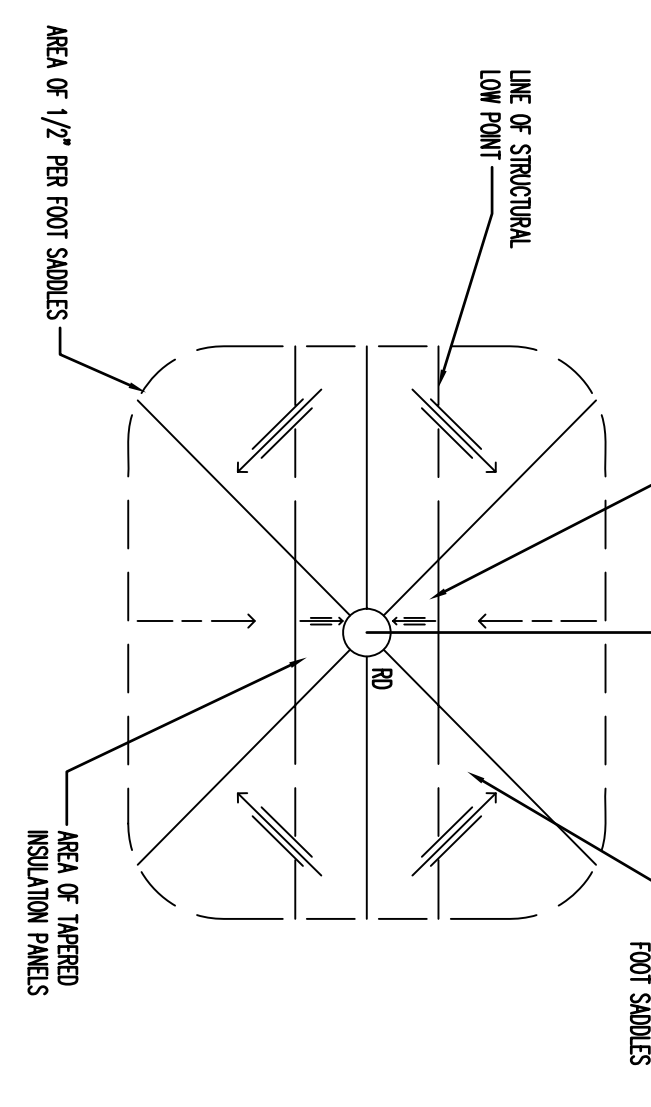
8 ROOF DRAIN DETAIL
ASB.04 1 1/2"=1'-0"

NOTE: ROOF DRAIN NOT SHOWN FOR CLARITY



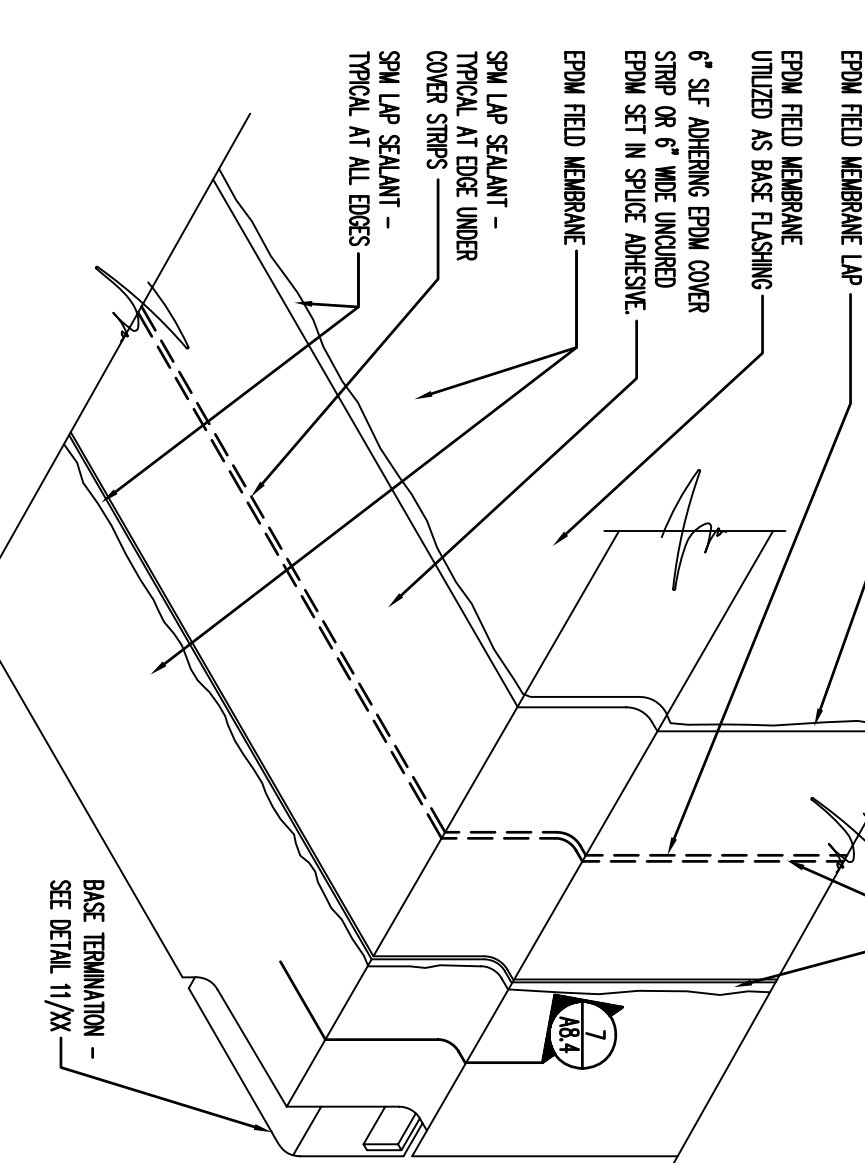
12 SECTION THRU STRUCTURAL LOW POINT
ASB.04 1 1/2"=1'-0"

NOTE: AREA OF TAPERED INSULATION PANELS



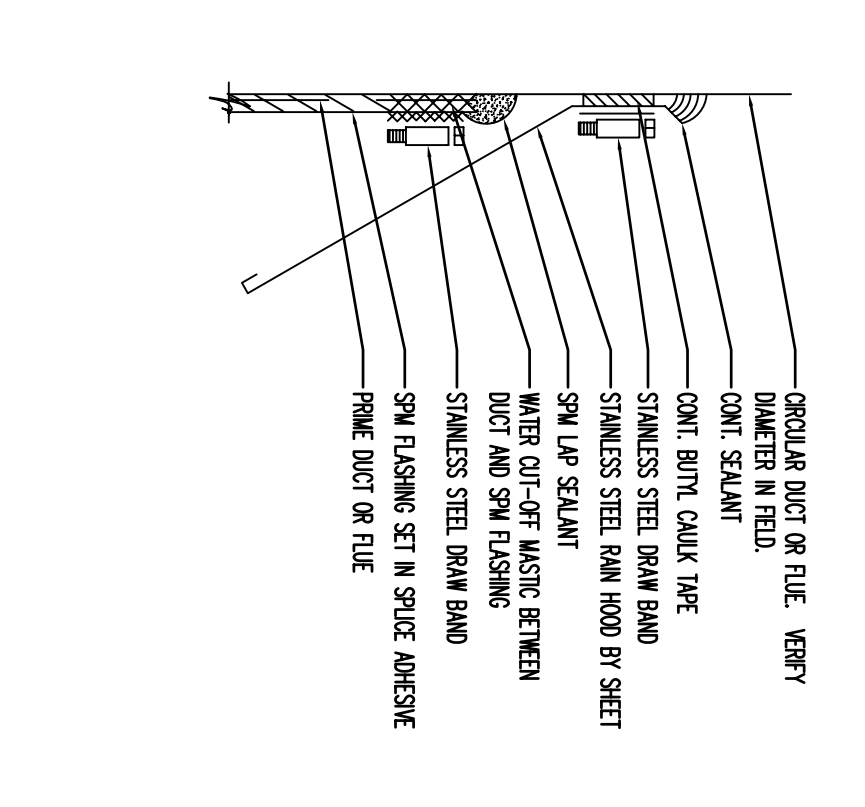
13 TAPERED INSULATION PLAN
ASB.04 N.T.S.

NOTE: 1. THE BASE FLASHING IS APPROVED WHEN EPDM FLASHING IS USED AS BASE FLASHING. 2. BALUST CLIMTED FOR CLARITY

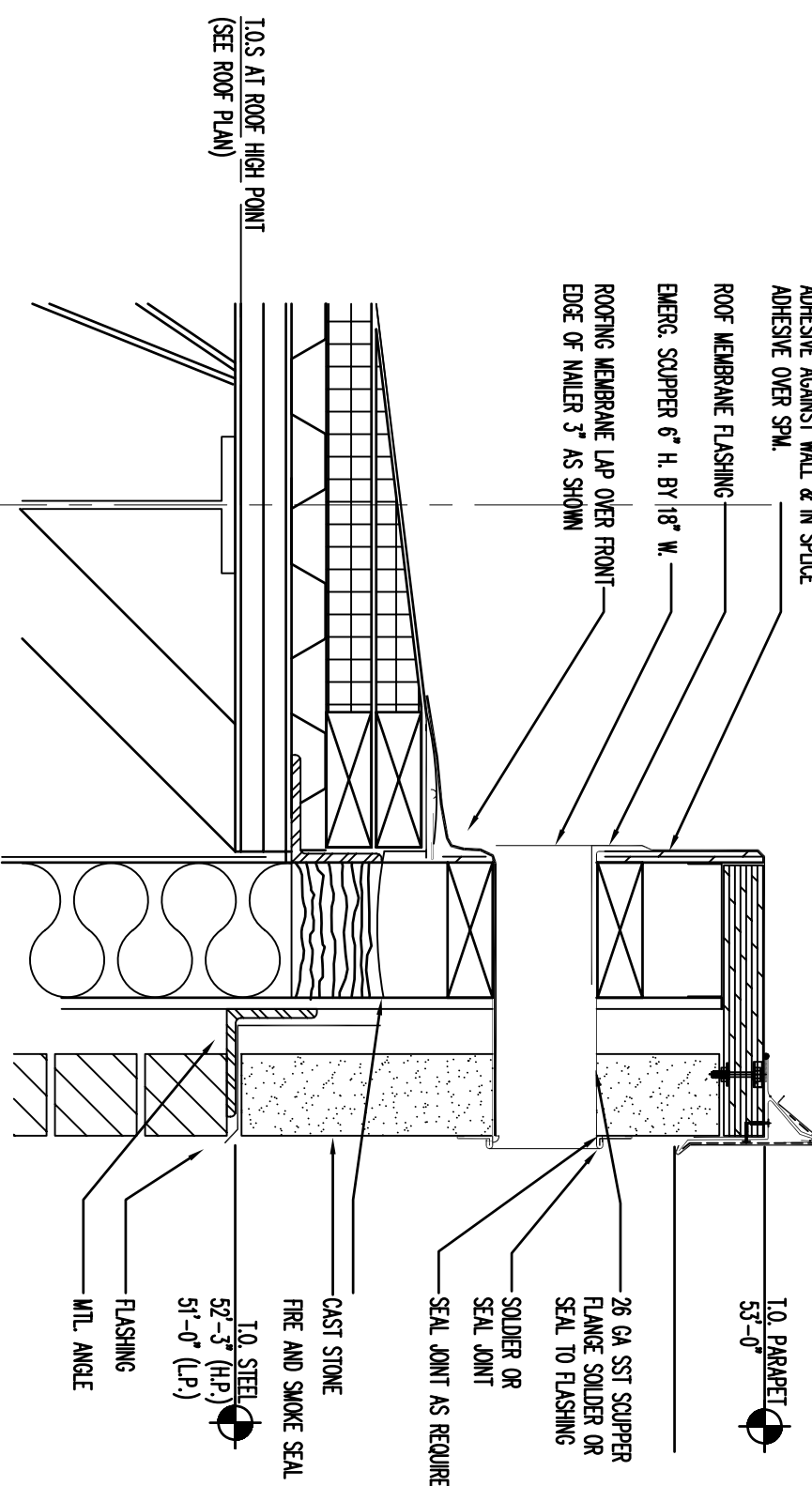
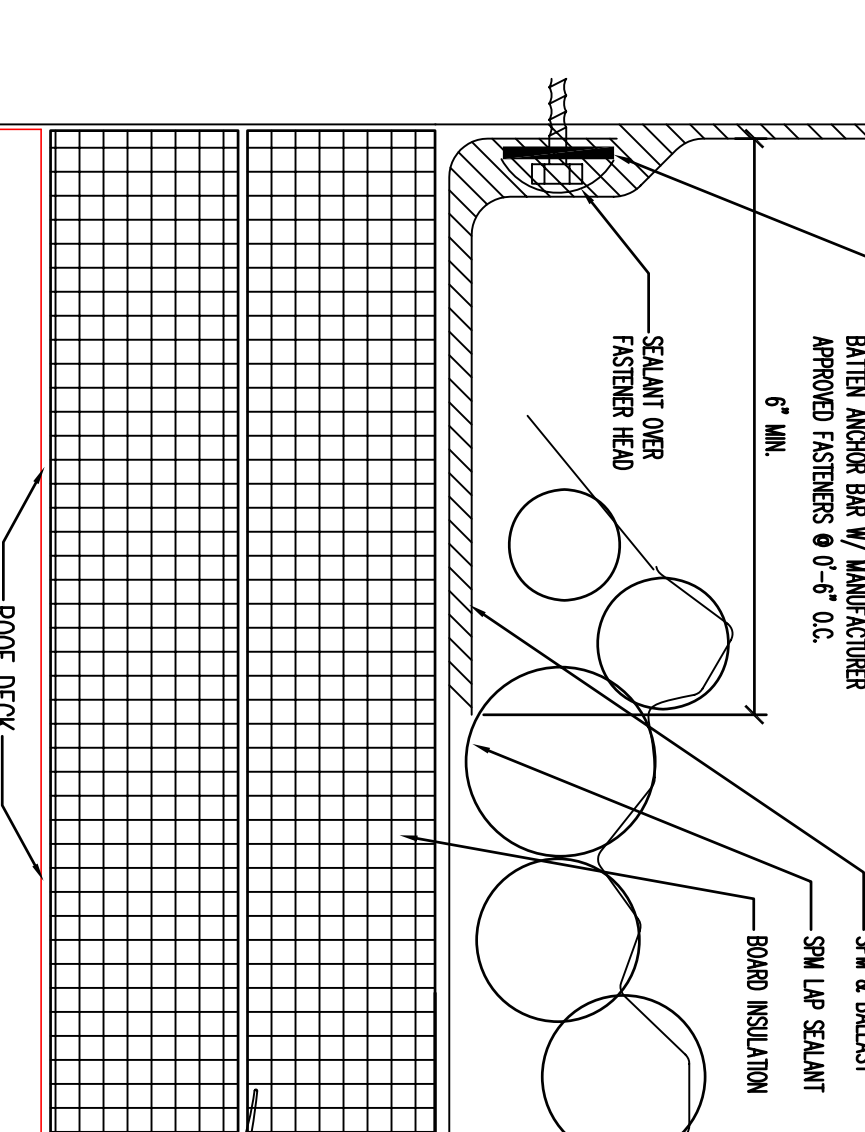


9 TYP. BASE FLASHING W/COVER STRIP
ASB.04 1 1/2"=1'-0"

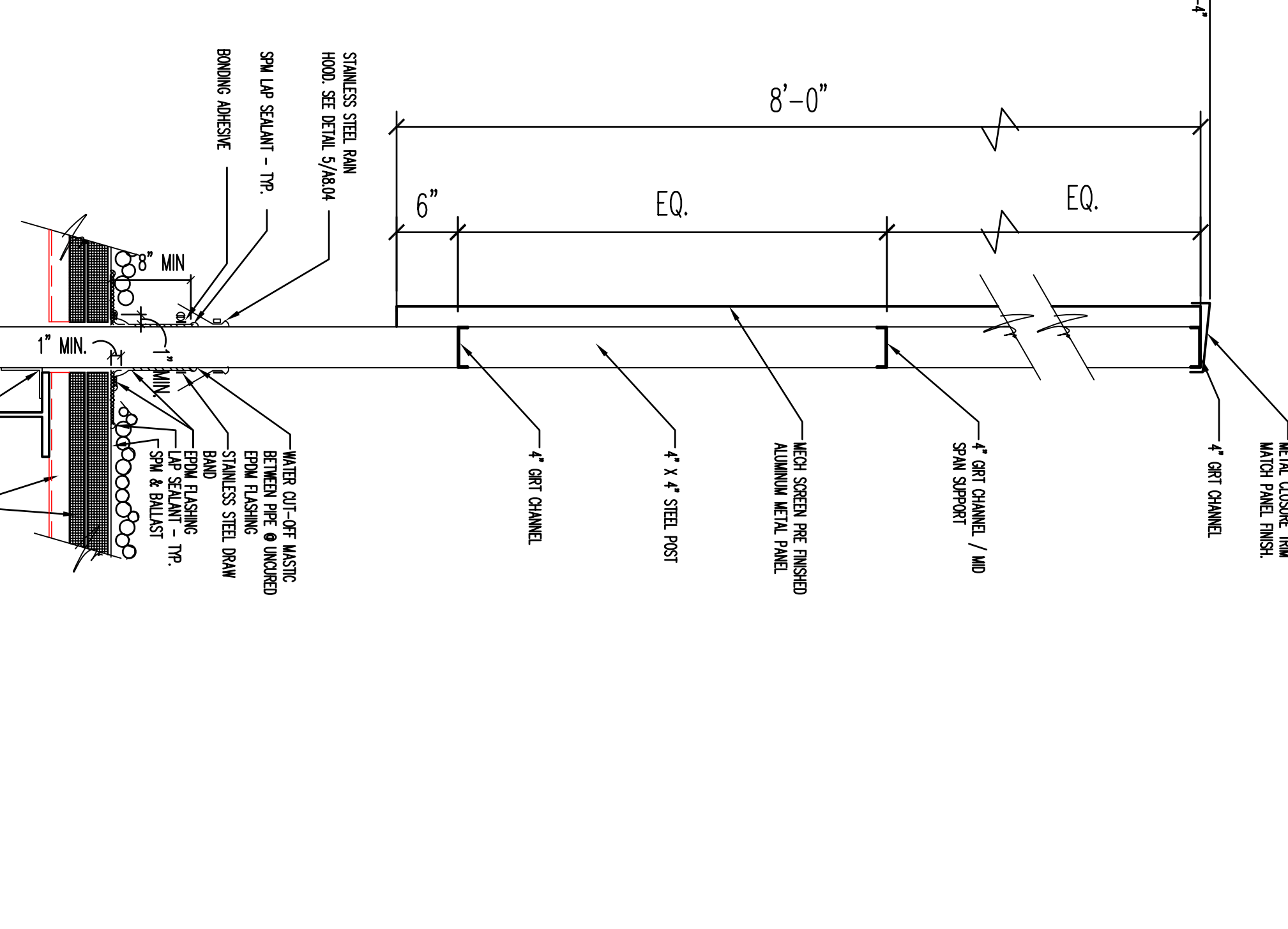
10 RAIN HOOD DETAIL
ASB.04 3"=1'-0"



11 TYP. SPM ANCHOR STRIP DETAIL
ASB.04 6"=1'-0"



14 EMERG. SCUPPER DETAIL
ASB.04 1 1/2"=1'-0"



15 MECH. SCREEN DETAIL
ASB.04 1 1/2"=1'-0"

LANDMARK HEALTHCARE FACILITIES, LLC
830 North Jefferson Street
Portland, ME 04102
Telephone: (414) 277-0500
Facsimile: (414) 277-1055

Francis Cauffman
Foley

Hoffmann
Francis Cauffman
Architects Ltd.

STRUCTURAL ENGINEER REGISTERED ASSOCIATES
SUITE 175
1500 WASHINGTON AVENUE
PHILADELPHIA, PA 19102
P (610) 644-6700
F (610) 644-9572

M/E/P ENGINEER
1500 WASHINGTON AVENUE
PHILADELPHIA, PA 19102
P (610) 644-6700
F (610) 644-9572

Revisions
11-20-06
CONSTRUCTION DOCUMENTS ISSUED

Sheet
ROOF DETAILS

Project Title
Landmark Healthcare
Facilities LLC
Fore River Medical
Pavilion
Portland, Maine

Date
NOVEMBER 20, 2006

Project Number
F06-5103

Drawing Number
A8.04