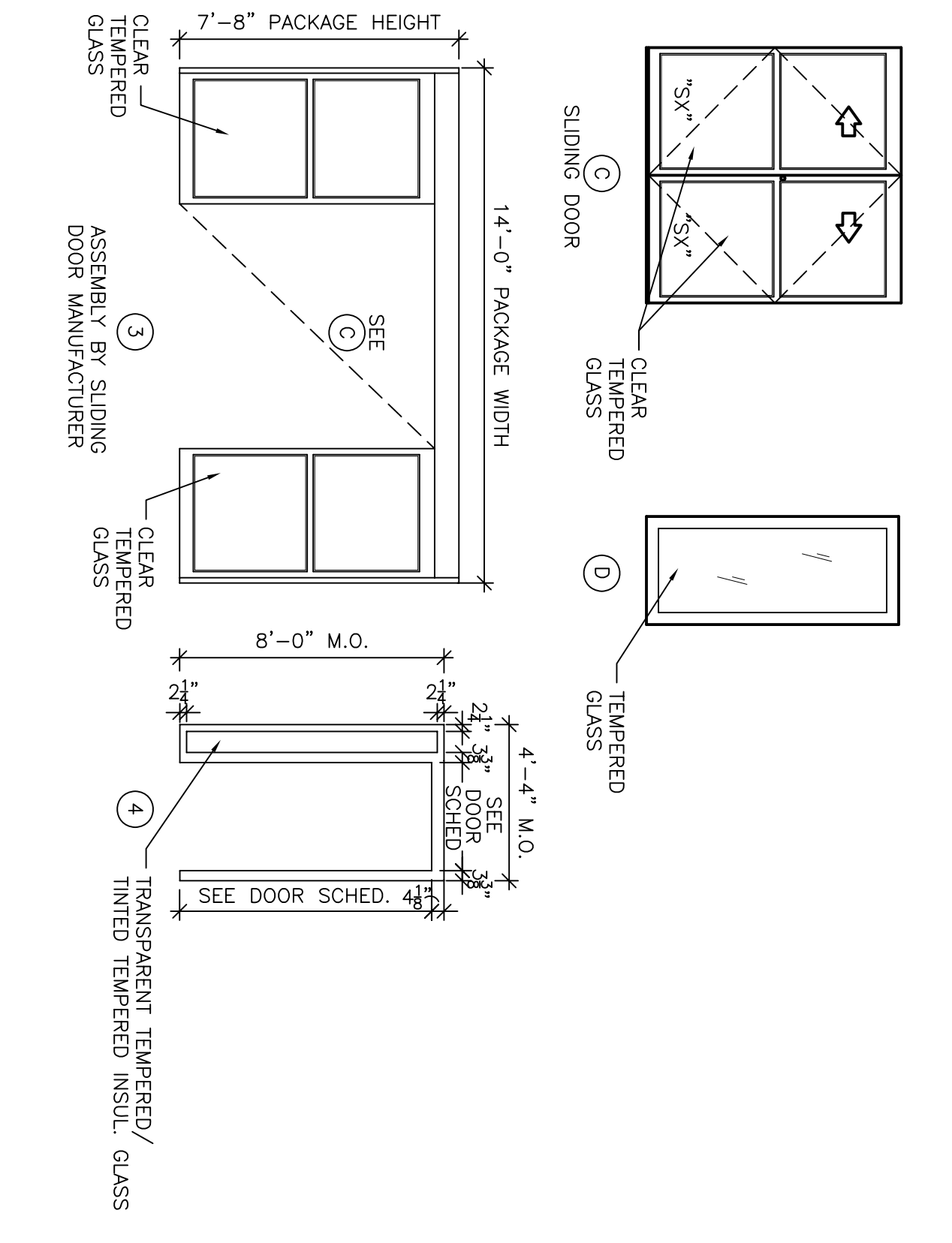
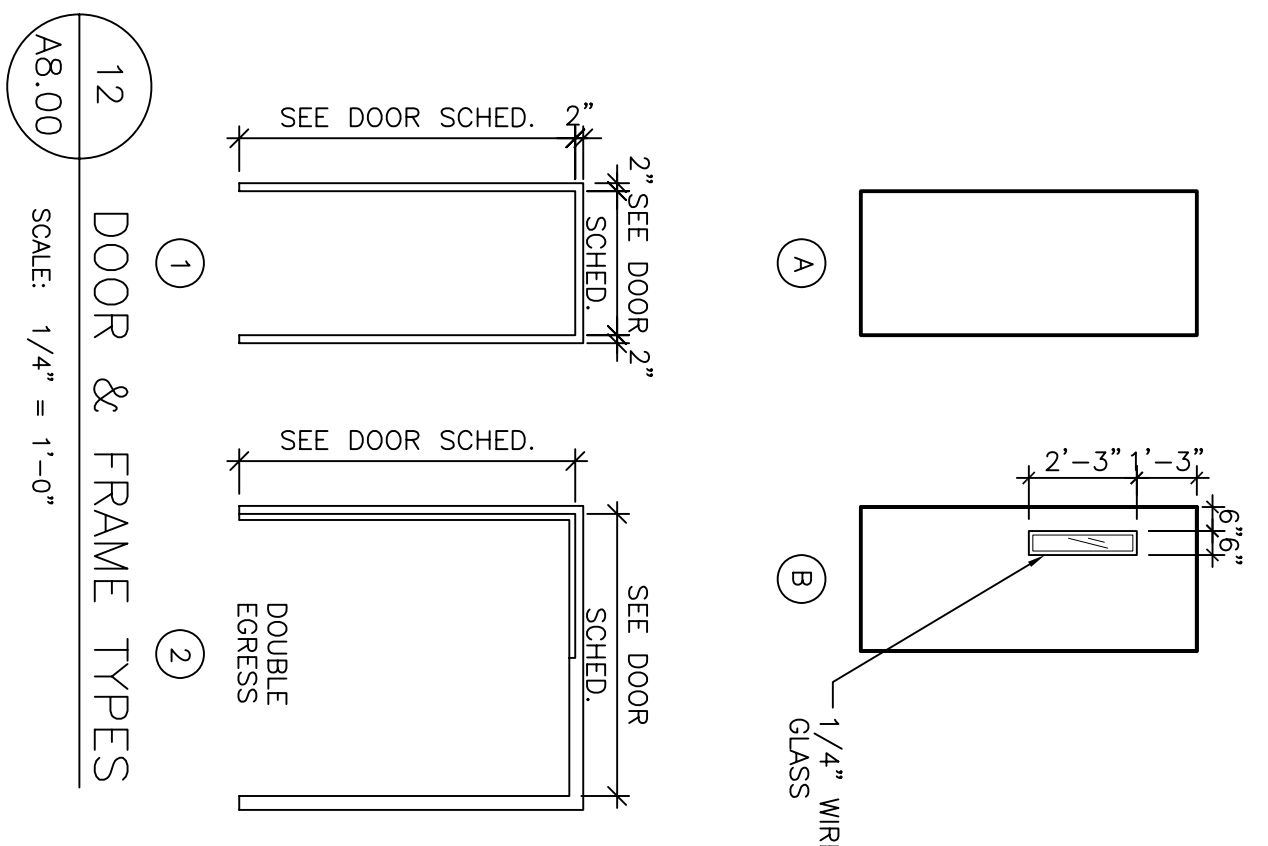


ABBREVIATIONS LEGEND:	
PLAM	PLASTIC LAMINATE
PT	PAINT
HM	HOLLOW METAL
AL	ALUMINUM
PREF	PREFINISHED
WD	WOOD
ST	STAIN
FF	FACTORY FINISH
GL	GLAZING
TMP	TEMPERED

GENERAL NOTES:

- PROVIDE COAT HOOD MOUNTED ON DOOR AT 3'-4" ABOVE FINISH FLOOR
- BID DOOR, FRAME AND HARDWARE AS AN ALTERNATE



DOOR HARDWARE SETS	
HARDWARE SET 1 (MAIN VESTIBULE ENTRY) -HARDWARE PROVIDED BY SLIDING DOOR MANUFACTURER	HARDWARE SET 5 (DOUBLE EGRESS DOORS) -2) EXIT DEVICES -3) PR-BALL BEARING BUTT HINGES -2) CLOSER -2) OVERHEAD FLUSH BOLTS -2) SETS-ELECTROMAGNETIC HOLDERS -1) ASTRA GAL
HARDWARE SET 2 (NOT USED) -1) PRIVACY LOCK -1) 1/2) PR-BALL BEARING BUTT HINGES -1) WALL OR FLOOR STOP -1) CLOSER	HARDWARE SET 6 (EGRESS STAIR-INTERIOR/WALL ROOM) -1) PASSAGE LOCK SET -1) 1/2) PR-BALL BEARING BUTT HINGES -1) WALL OR FLOOR STOP -1) CLOSER
HARDWARE SET 3 (PUBLIC TOILET ROOMS) -1) 1/2) PR-BALL BEARING BUTT HINGES -1) WALL OR FLOOR STOP -1) CLOSER -1) LIGHT AND SOUND SEAL (ELEVATOR EQUIPMENT AND COMPRESSOR EQUIPMENT ROOMS)	HARDWARE SET 7 (ALUM. EGRESS STAIR-EXTERIOR) -1) CYLINDER LOCK -1) 1/2) HARDWARE PROVIDED BY ALUMINUM ENTRANCE MANUFACTURER
HARDWARE SET 4 (AUA, MECH, ELEC, ELEV, EQUIP, ETC.) -1) STOREROOM LOCK SET -1) 1/2) PR-BALL BEARING BUTT HINGES -1) WALL OR FLOOR STOP -1) CLOSER	HARDWARE SET 8 (DOUBLE DOORS) -2) EXIT DEVICES WITH CLASSROOM LOCK SET TRIM -2) COORDINATOR -1) ASTRA GAL -2) SETS-ELECTROMAGNETIC HOLDERS
	HARDWARE SET 9 (TENANT AREA) -BID HARDWARE AS AN ALTERNATE -1) ENTRANCE-OFFICE LOCKSET -1) 1/2) BALL BEARING BUTT HINGES -1) WALL OR FLOOR STOP -1) CLOSER

DOOR SCHEDULE											
DOOR NUMBER	TYPE	MAT'L	FINISH	SIZE (L X W) T, UNLESS NOTED	DOOR	FRAME	MAT'L	FINISH	THRESH JAMB	HEAD	DETAILS
0001A	A	WD	PLAM	2 @ 3'-0" X 7'-0"		1	HM	PT	J1	H1	90
0001B	A	WD	PLAM	2 @ 3'-0" X 7'-0"		1	HM	PT	J1	H1	90
0101	A	WD	PLAM	3'-6" X 7'-0"		1	HM	PT	J1	H1	90
0102	A	WD	PLAM	3'-6" X 7'-0"		1	HM	PT	J1	H1	90
0103	A	WD	PLAM	3'-6" X 7'-0"		1	HM	PT	J1	H1	90
SI-B01	A	WD	PLAM	3'-0" X 7'-0"		1	HM	PT	J1	H1	90
1001A	C	AL/GL	FF	6'-0" X 7'-0" NOMINAL		3	AL	FF	*	*	
1001B	C	AL/GL	FF	6'-0" X 7'-0" NOMINAL		3	AL	FF	*	*	
1002A	C	AL/GL	FF	6'-0" X 7'-0" NOMINAL		3	AL	FF	*	*	
1002B	C	AL/GL	FF	6'-0" X 7'-0" NOMINAL		3	AL	FF	*	*	
1003	B	WD	PLAM	2 @ 3'-0" X 7'-0"		2	HM	PT	* H2	*	45
1005	A	WD	PLAM	3'-0" X 7'-0"		1	HM	PT	J1	H1	90
1006	A	WD	PLAM	3'-0" X 7'-0"		1	HM	PT	J1	H1	90
1007	A	WD	PLAM	3'-0" X 7'-0"		1	HM	PT	J1	H1	90
1008	A	WD	PLAM	3'-0" X 7'-0"		1	HM	PT	J1	H1	90
1009	A	WD	PLAM	3'-0" X 7'-0"		1	HM	PT	J1	H1	90
1010	A	WD	PLAM	3'-0" X 7'-0"		1	HM	PT	J1	H1	90
1011	B	WD	PLAM	3'-0" X 7'-0"		1	HM	PT	J1	H1	45
1101	A	WD	PLAM	3'-0" X 7'-0"		1	HM	PT	J1	H1	90
1201	A	WD	PLAM	3'-0" X 7'-0"		1	HM	PT	J1	H1	90
1301	A	WD	PLAM	3'-0" X 7'-0"		1	HM	PT	J1	H1	90
1401	A	WD	PLAM	3'-0" X 7'-0"		1	HM	PT	J1	H1	90
SI-A1A	D	AL/GL	FF	3'-0" X 7'-8" NOMINAL		4	AL	FF	* J3/4	H3	90
SI-A1B	D	AL/GL	FF	3'-0" X 7'-8" NOMINAL		4	AL	FF	* J1	H1	90
SI-B1A	D	AL/GL	FF	3'-0" X 7'-8" NOMINAL		4	AL	FF	* J3/4	H3	90
SI-B1B	D	AL/GL	FF	3'-0" X 7'-8" NOMINAL		4	AL	FF	* J1	H1	90
2002	B	WD	PLAM	2 @ 3'-0" X 7'-0"		2	HM	PT	U2	H2	45
2003	B	WD	PLAM	2 @ 3'-0" X 7'-0"		2	HM	PT	U2	H2	45
2004	A	WD	PLAM	3'-0" X 7'-0"		1	HM	PT	J1	H1	90
2005	A	WD	PLAM	3'-0" X 7'-0"		1	HM	PT	J1	H1	90
2006	A	WD	PLAM	3'-0" X 7'-0"		1	HM	PT	J1	H1	90
2007	A	WD	PLAM	3'-0" X 7'-0"		1	HM	PT	J1	H1	45
2008	A	WD	PLAM	3'-0" X 7'-0"		1	HM	PT	J1	H1	90
2101	A	WD	PLAM	3'-0" X 7'-0"		1	HM	PT	J1	H1	90
2201	A	WD	PLAM	3'-0" X 7'-0"		1	HM	PT	J1	H1	90
2301	A	WD	PLAM	3'-0" X 7'-0"		1	HM	PT	J1	H1	90
SI-A2	A	WD	PLAM	3'-0" X 7'-0"		1	HM	PT	J1	H1	90
SI-B2	A	WD	PLAM	3'-0" X 7'-0"		1	HM	PT	J1	H1	90
3003	A	WD	PLAM	3'-0" X 7'-0"		1	HM	PT	J1	H1	90
3004	A	WD	PLAM	3'-0" X 7'-0"		1	HM	PT	J1	H1	90
3005	A	WD	PLAM	3'-0" X 7'-0"		1	HM	PT	J1	H1	90
3006	A	WD	PLAM	3'-0" X 7'-0"		1	HM	PT	J1	H1	90
3007	A	WD	PLAM	3'-0" X 7'-0"		1	HM	PT	J1	H1	90
3101	A	WD	PLAM	3'-0" X 7'-0"		1	HM	PT	J1	H1	90
3201	A	WD	PLAM	3'-0" X 7'-0"		1	HM	PT	J1	H1	90
SI-A3	A	WD	PLAM	3'-0" X 7'-0"		1	HM	PT	J1	H1	90
SI-B3	A	WD	PLAM	3'-0" X 7'-0"		1	HM	PT	J1	H1	90
4003	A	WD	PLAM	3'-0" X 7'-0"		1	HM	PT	J1	H1	90
4004	A	WD	PLAM	3'-0" X 7'-0"		1	HM	PT	J1	H1	90
4005	A	WD	PLAM	3'-0" X 7'-0"		1	HM	PT	J1	H1	90
4006	A	WD	PLAM	3'-0" X 7'-0"		1	HM	PT	J1	H1	90
4007	A	WD	PLAM	3'-0" X 7'-0"		1	HM	PT	J1	H1	90
4101	A	WD	PLAM	3'-0" X 7'-0"		1	HM	PT	J1	H1	90
4201	A	WD	PLAM	3'-0" X 7'-0"		1	HM	PT	J1	H1	90
SI-A4	A	WD	PLAM	3'-0" X 7'-0"		1	HM	PT	J1	H1	90
SI-B4	A	WD	PLAM	3'-0" X 7'-0"		1	HM	PT	J1	H1	90

