

NOTE:  
SOLID WOOD AND WOOD  
VENEER TO BE WD-2,  
STAINED TO MATCH  
ARCHITECTS SAMPLE  
PLYWOOD SUBSTRATE  
TO BE FIRE RATED

**Francis  
Cauftman  
Foley  
Hoffmann**

Francis Cauftman  
2120 Arch Street  
Portland, ME 04103  
Architects Ltd.  
215-588-8250

**STRUCTURAL ENGINEERS  
FRANCIS CAUFTMAN FOLEY  
HOFFMANN ARCHITECTS ASSOCIATES**

SUITE 175  
100 WALKER STREET, PORTLAND, ME 04103  
P (603) 645-9572  
F (603) 645-9572

**M/E/P ENGINEER  
MORRIS ENGINEERING**

1500 WALKER STREET, SUITE 1400  
PHILADELPHIA, PA 19102  
P 215-262-2106  
F 215-262-2106

Revisions  
11-20-06  
CONSTRUCTION DOCUMENTS ISSUED

Sheet  
INTERIOR DETAILS

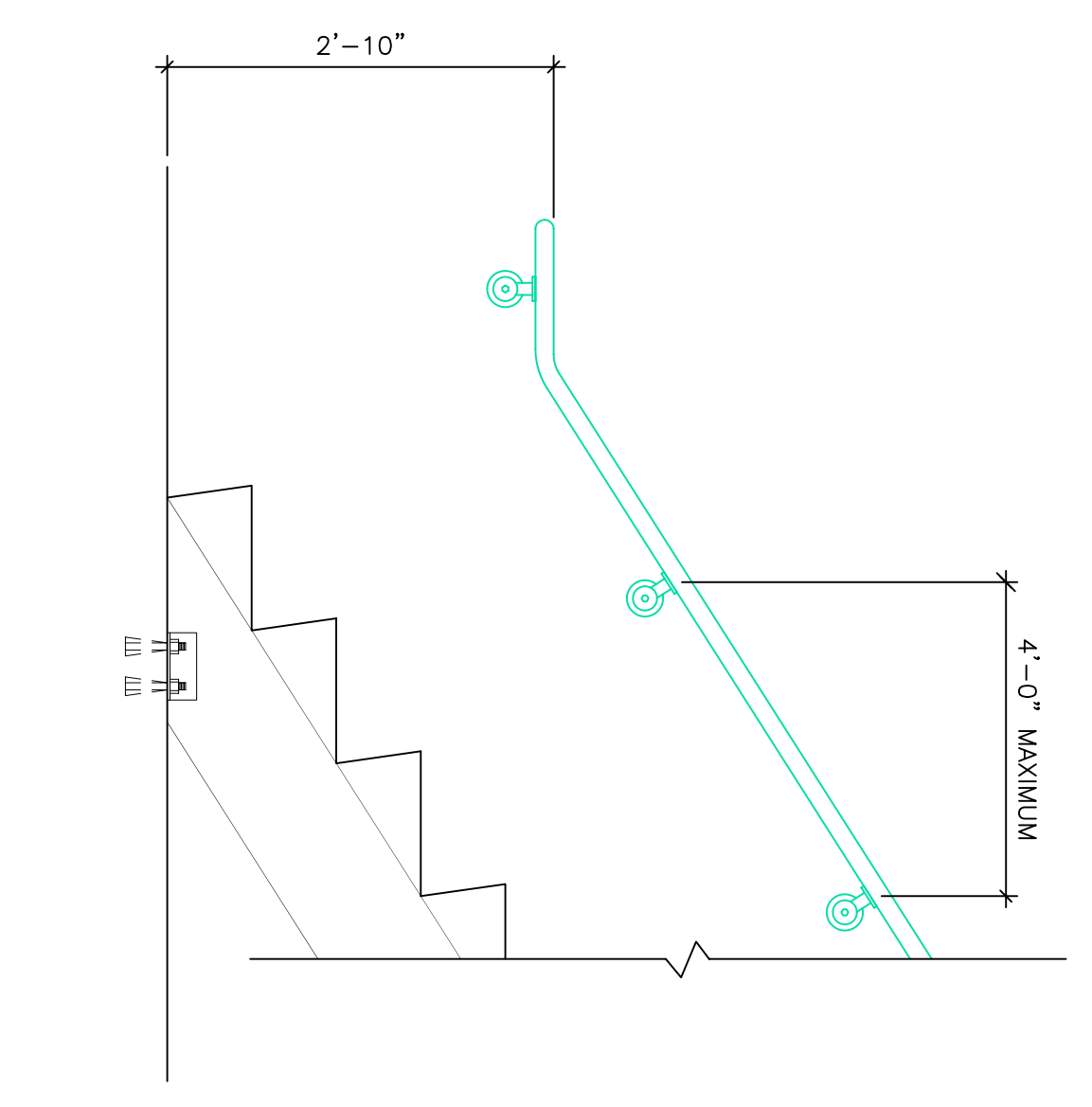
Project Title  
**Landmark Healthcare  
Facilities LLC**

Fore River Medical  
Pavilion  
Portland, Maine

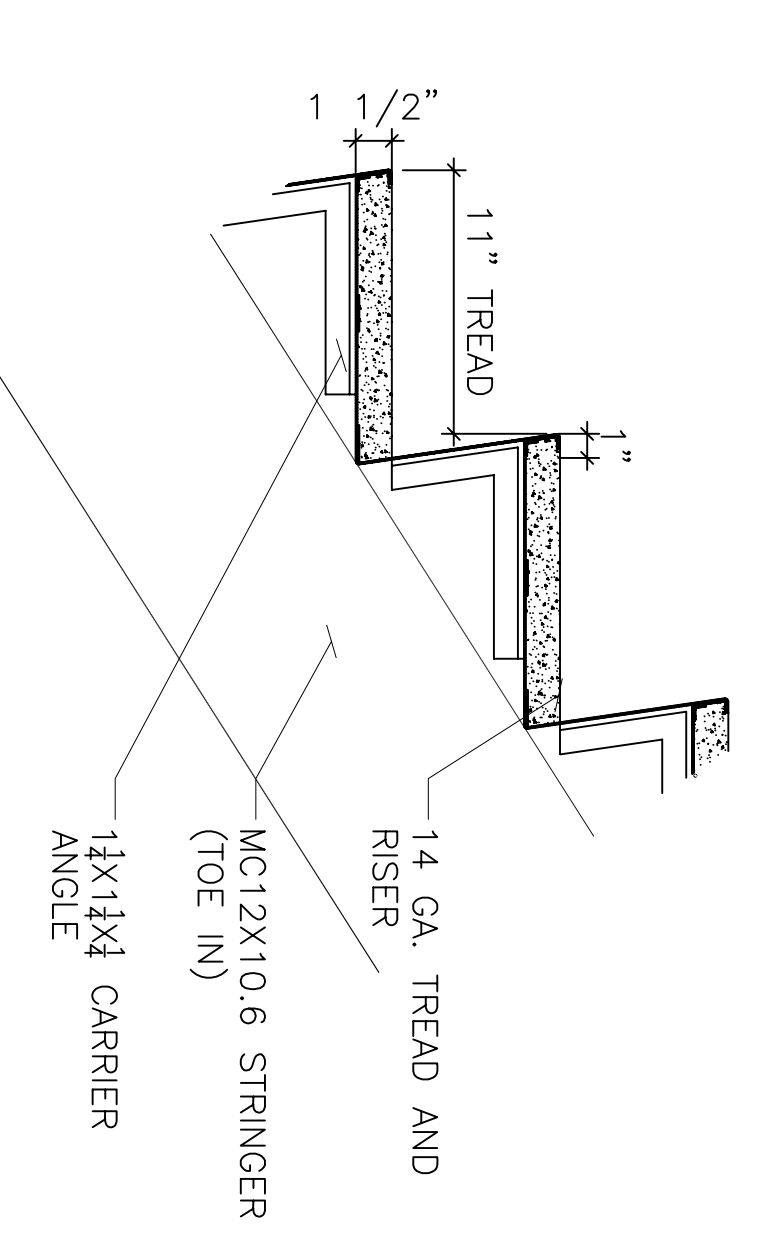
Date  
**NOVEMBER 20, 2006**

Project Number  
**F06-5103**

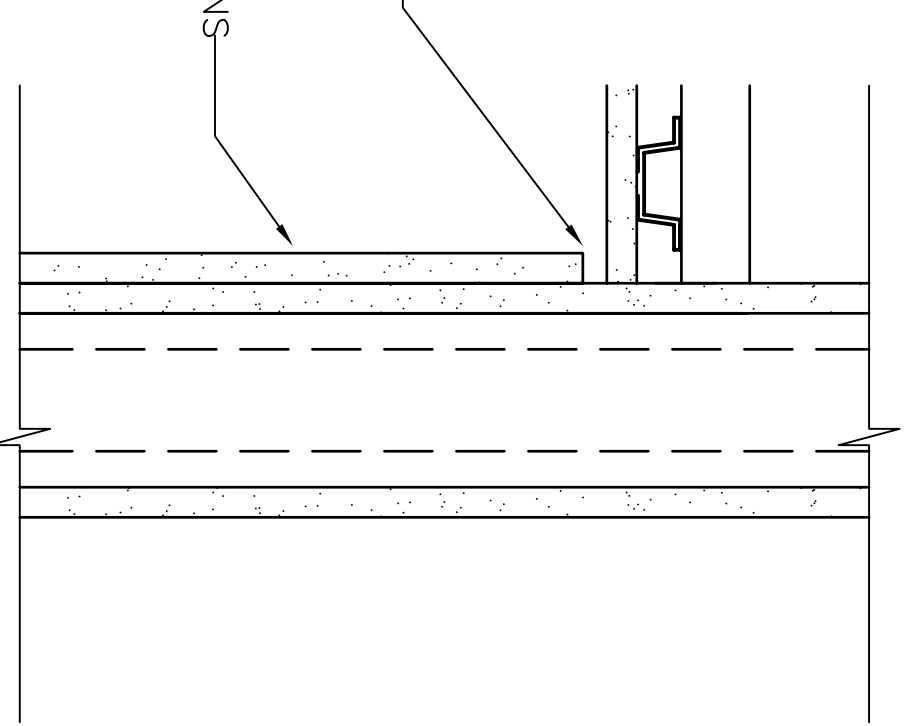
Drawing Number  
**A7.03**



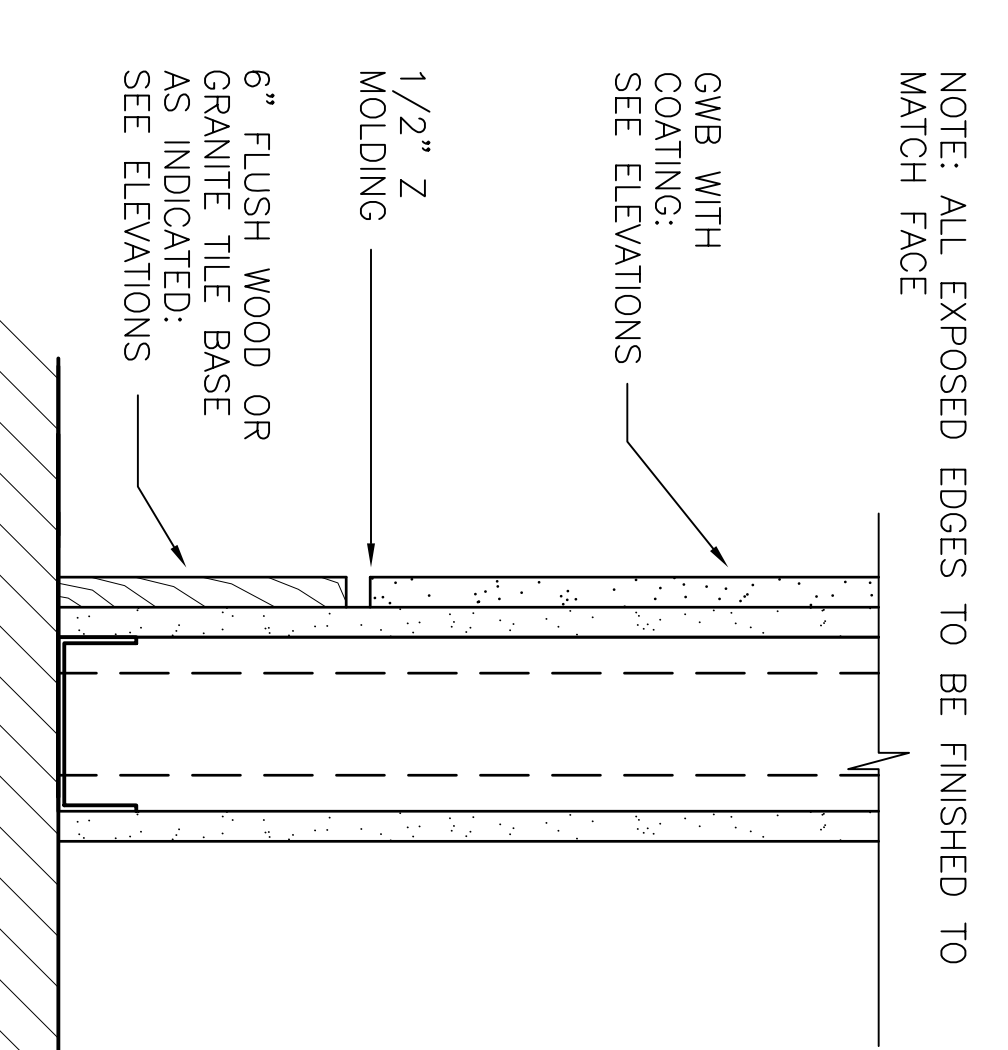
1 STAIR DETAIL  
A7.03 3/4"=1'-0"



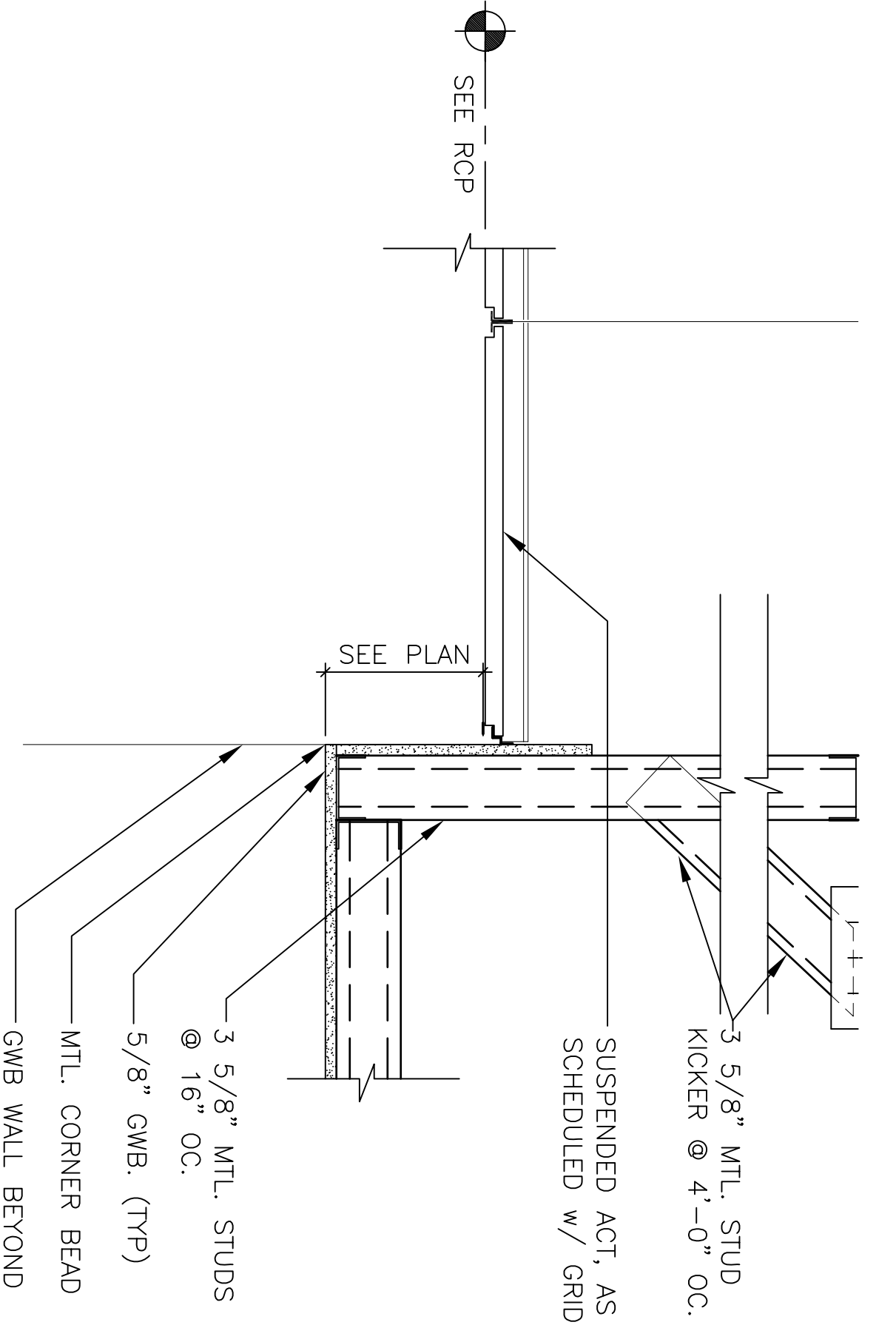
5 STAIR DETAIL  
A7.03 3'-1'-0"



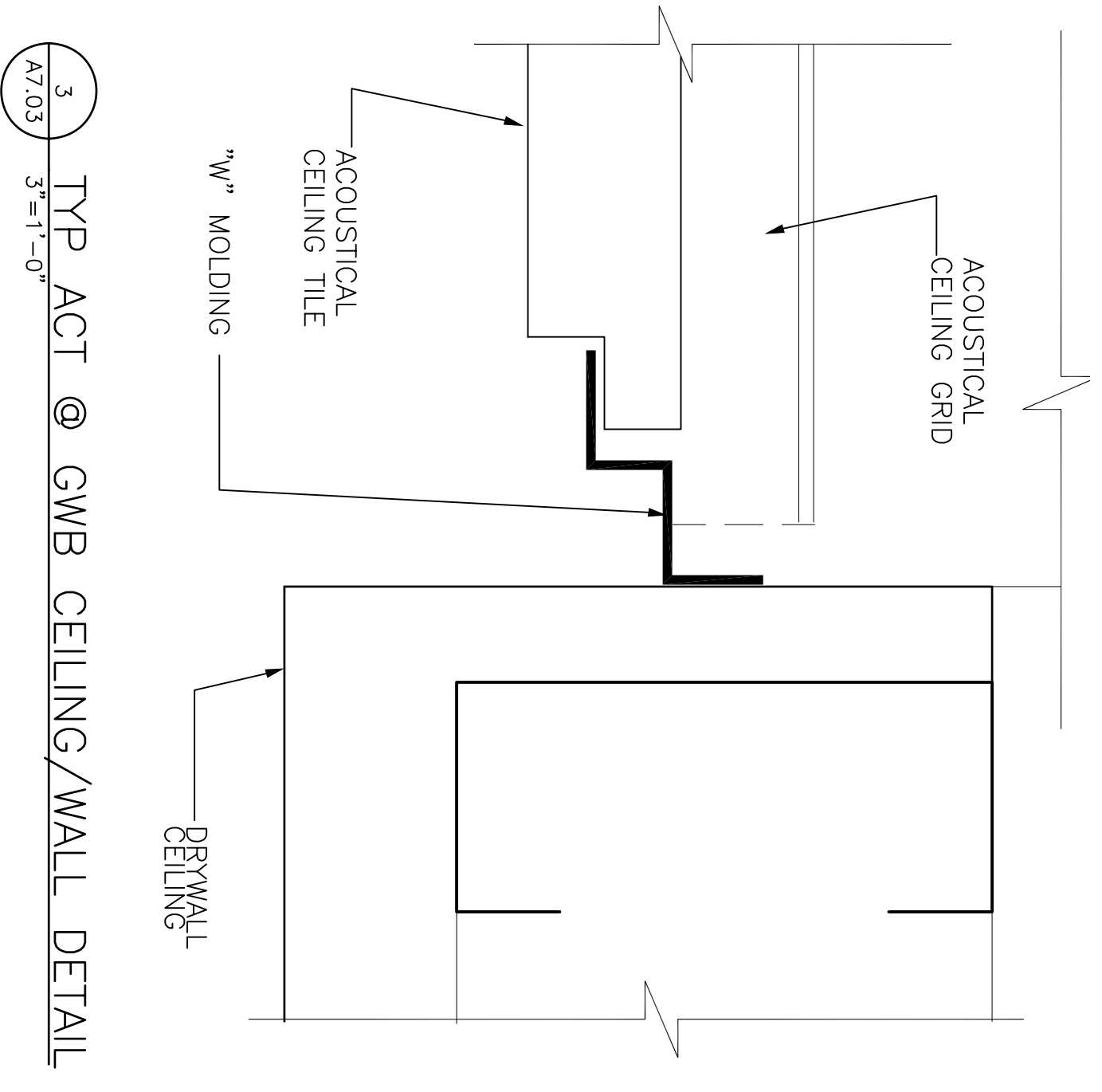
8 CEILING DETAIL  
A7.03 3'-1'-0"



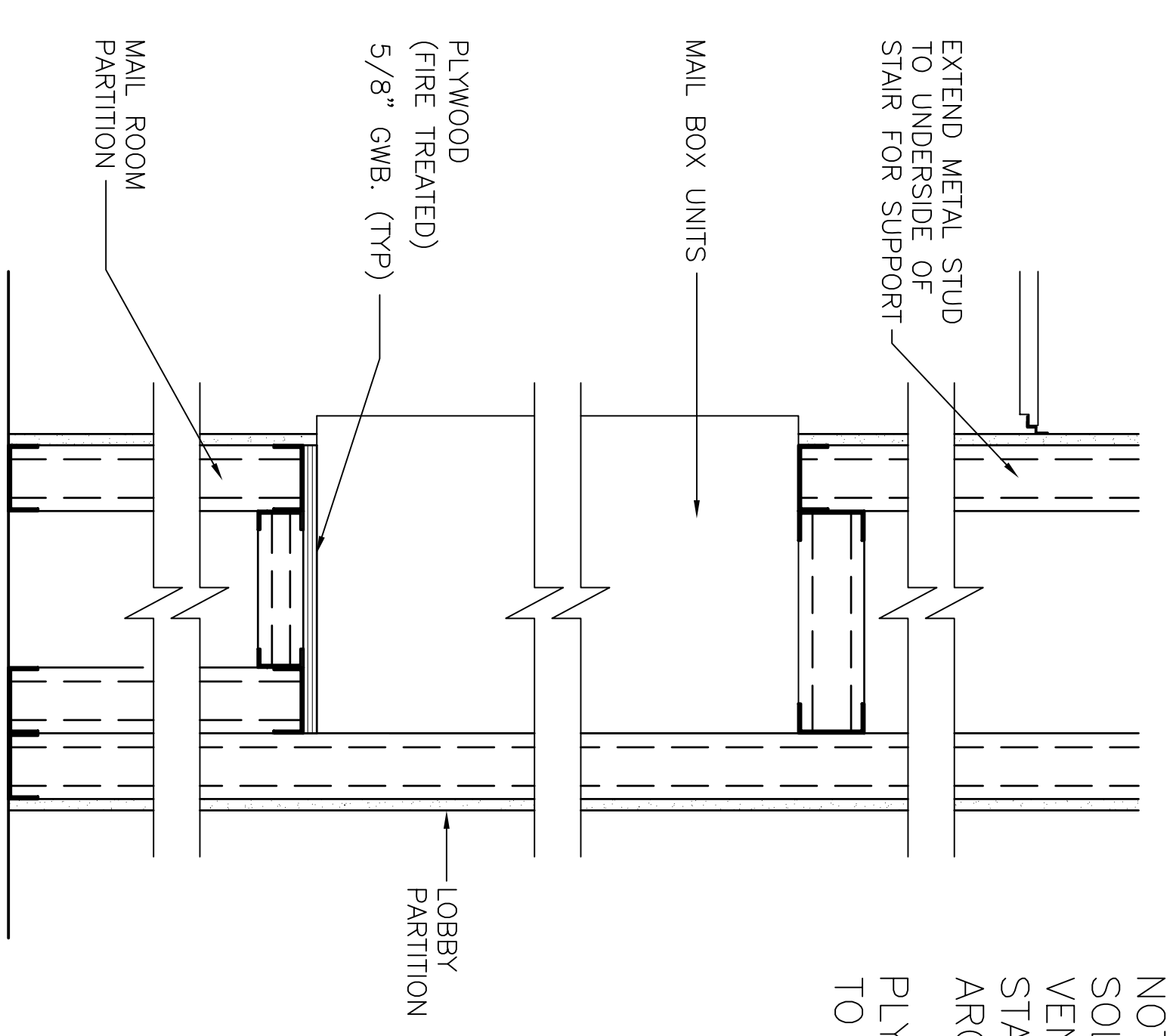
9 BASE DETAIL  
A7.03 3'-1'-0"



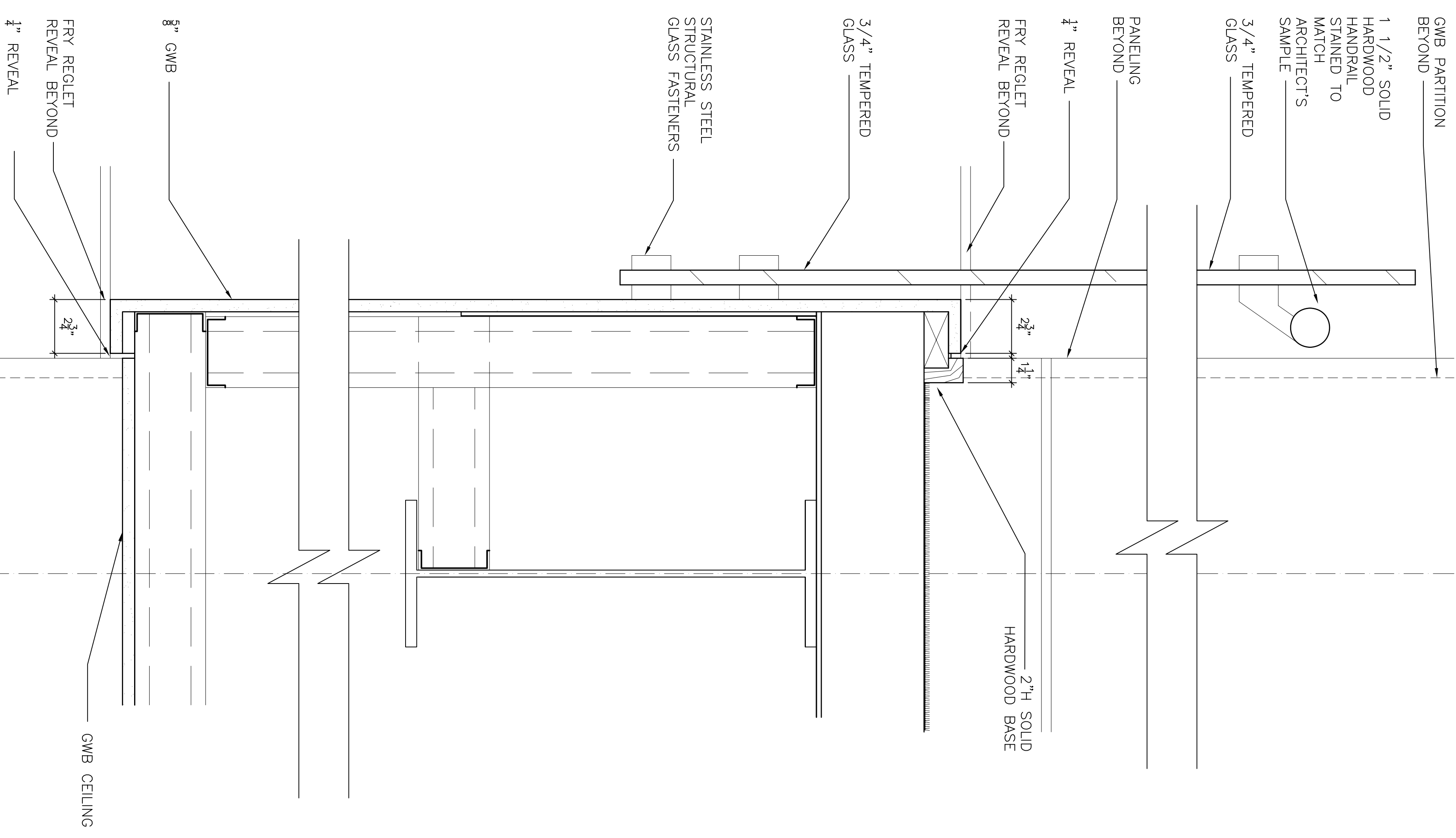
2 CEILING DETAIL @ BULKHEAD  
A7.03 1 1/2"=1'-0"



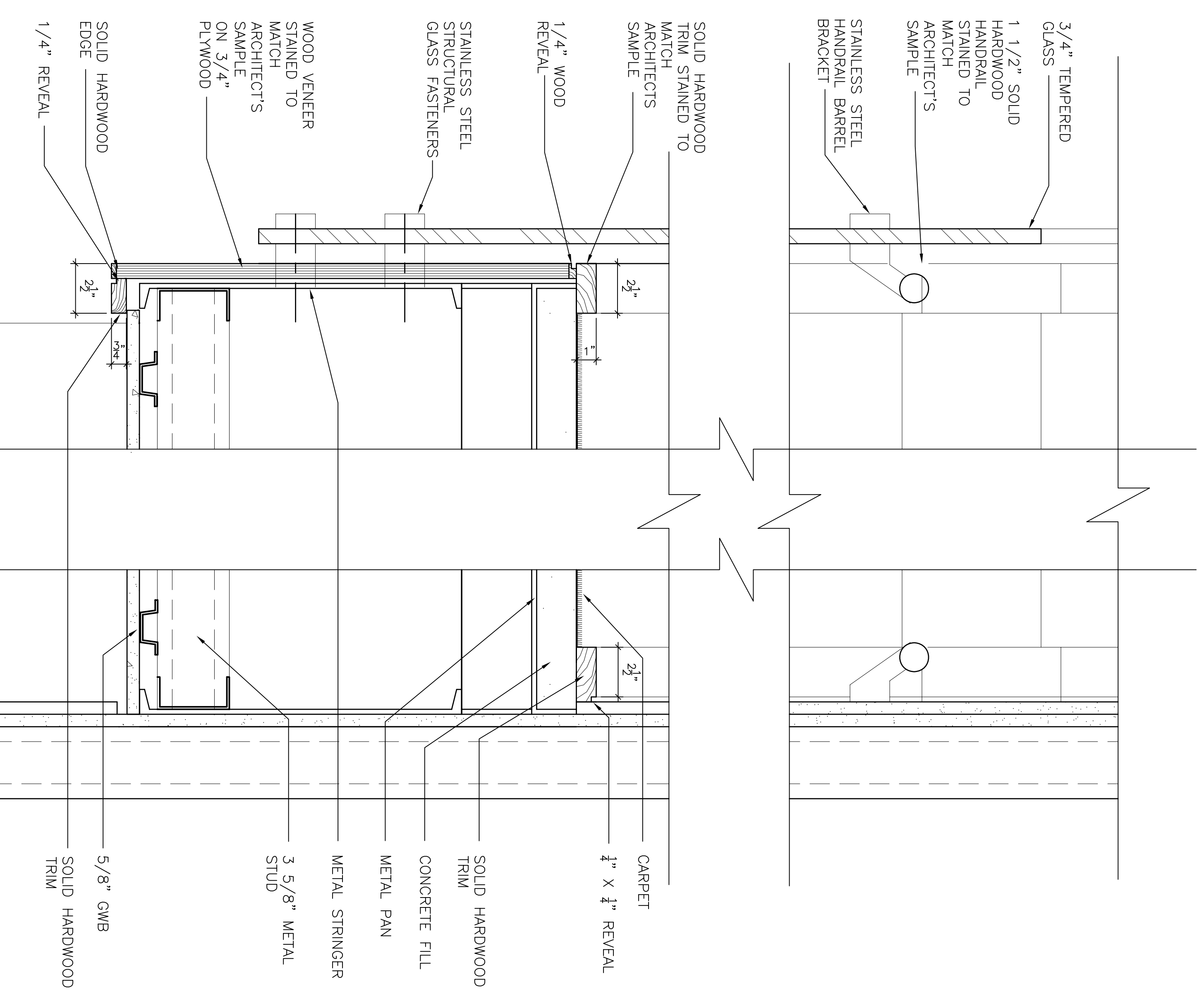
3 TYP. ACT @ GWB CEILING/WALL DETAIL  
A7.03 3'-1'-0"



4 MAIL BOX SECTION  
A7.03 1-1/2"=1'-0"



6 BALCONY SECTION  
A7.03 3'-1'-0"



7 STAIR DETAIL  
A7.03 3'-1'-0"

NOTE: ALL EXPOSED EDGES TO BE FINISHED TO MATCH FACE

GWB WITH COATING: SEE ELEVATIONS

1/2" Z MOLDING  
6" FLUSH WOOD OR GRANITE TILE BASE AS INDICATED. SEE ELEVATIONS