

**LANDMARK
HEALTHCARE
FACILITIES, LLC**

830 North Jefferson Street
Middleton, VT 05757
Telephone: (414) 277-4500
Facsimile: (414) 277-1055

Francis

Caufman

Foley

Hoffmann

Francis Cauffman 2120 Arch Street
Philadelphia, PA 19103
Telephone: 215-588-8280
Architects Ltd.

STRUCTURAL ENGINEER
M/S COLLIER MCKENNA ASSOCIATES
SUITE 175 44 18003
PHILADELPHIA, PA 19102
P (610) 644-8570
F (610) 644-8572

M/E/P ENGINEER
1500 MARKET STREET, SUITE 1400
PHILADELPHIA, PA 19102
P (215) 252-2106
F (215) 252-2106

Revisions
11-20-06
CONSTRUCTION DOCUMENTS ISSUED

Sheet
INTERIOR ELEVATIONS

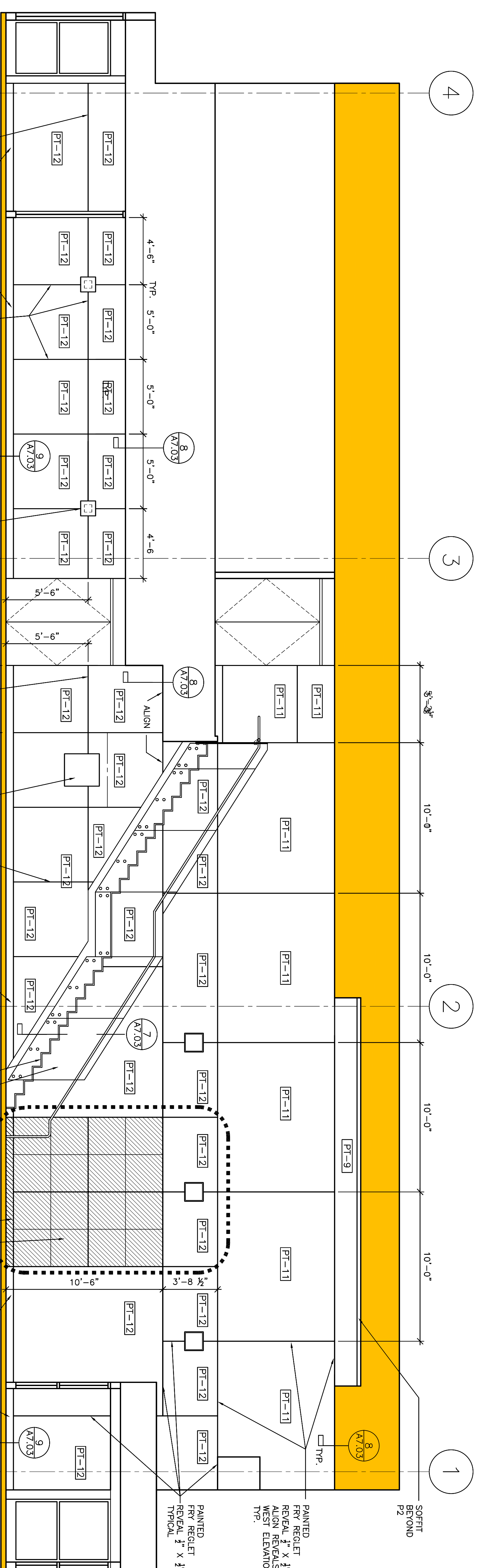
Project Title
Landmark Healthcare
Facilities LLC

Fore River Medical
Pavilion
Portland, Maine

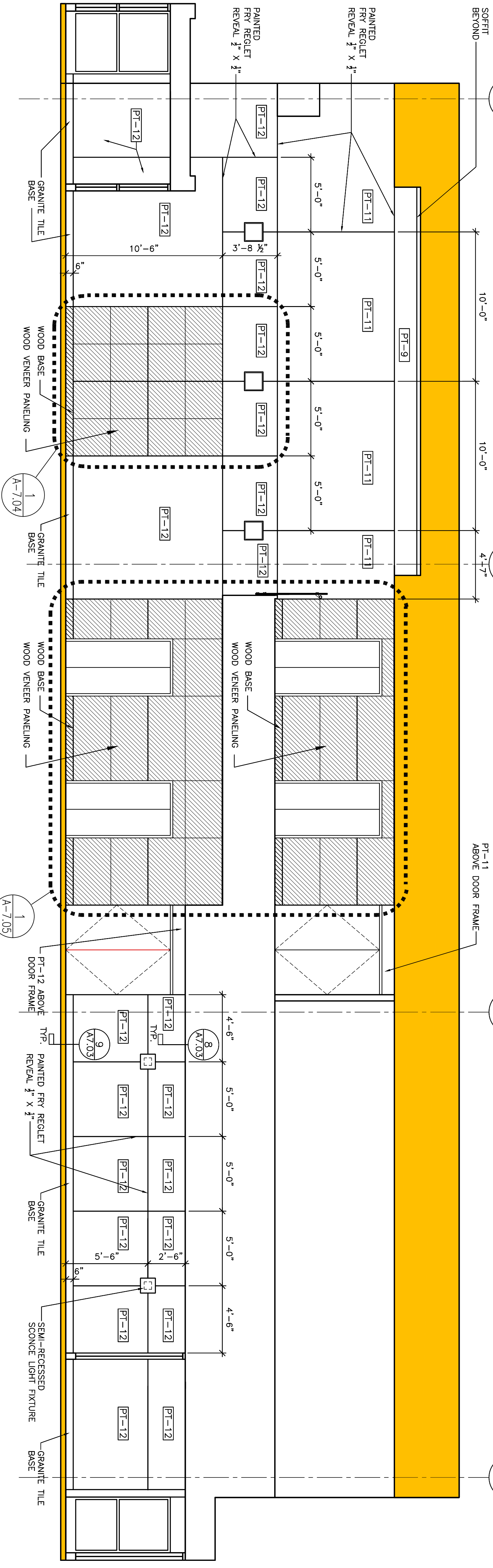
Date
NOVEMBER 20, 2006

Project Number
F06-5103

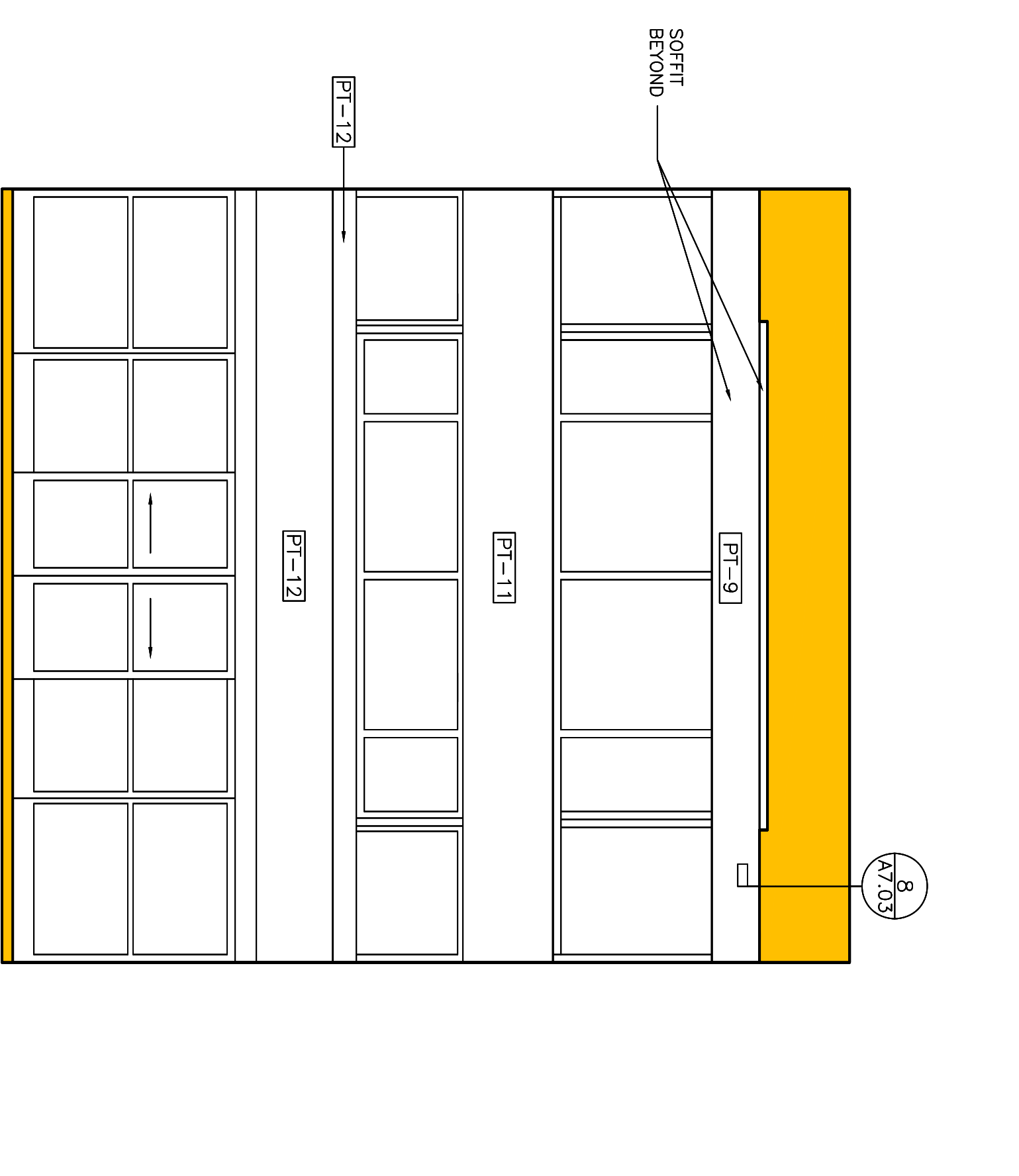
Drawing Number
A7.02



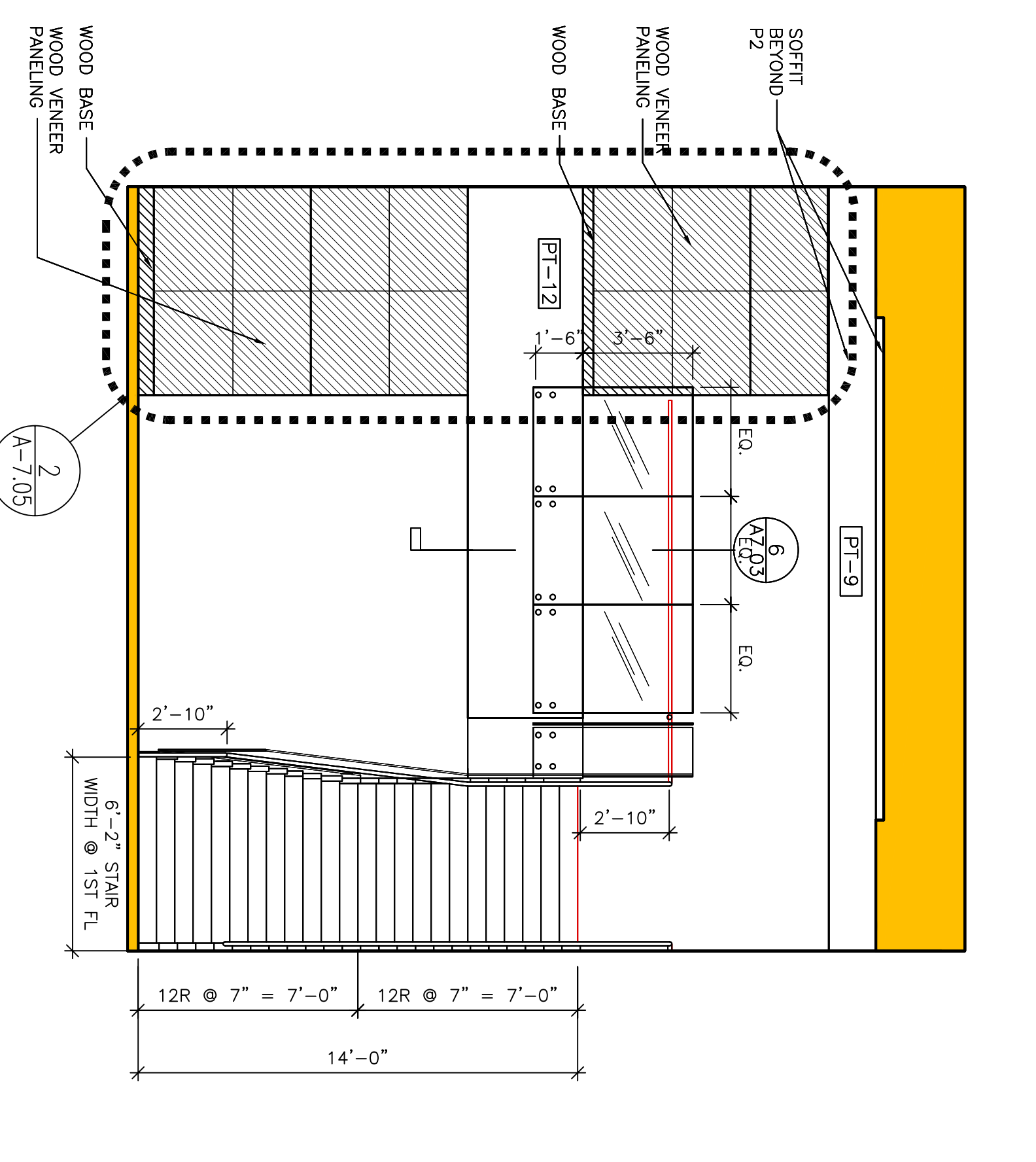
1 EAST LOBBY ELEVATION
1/4"=1'-0"



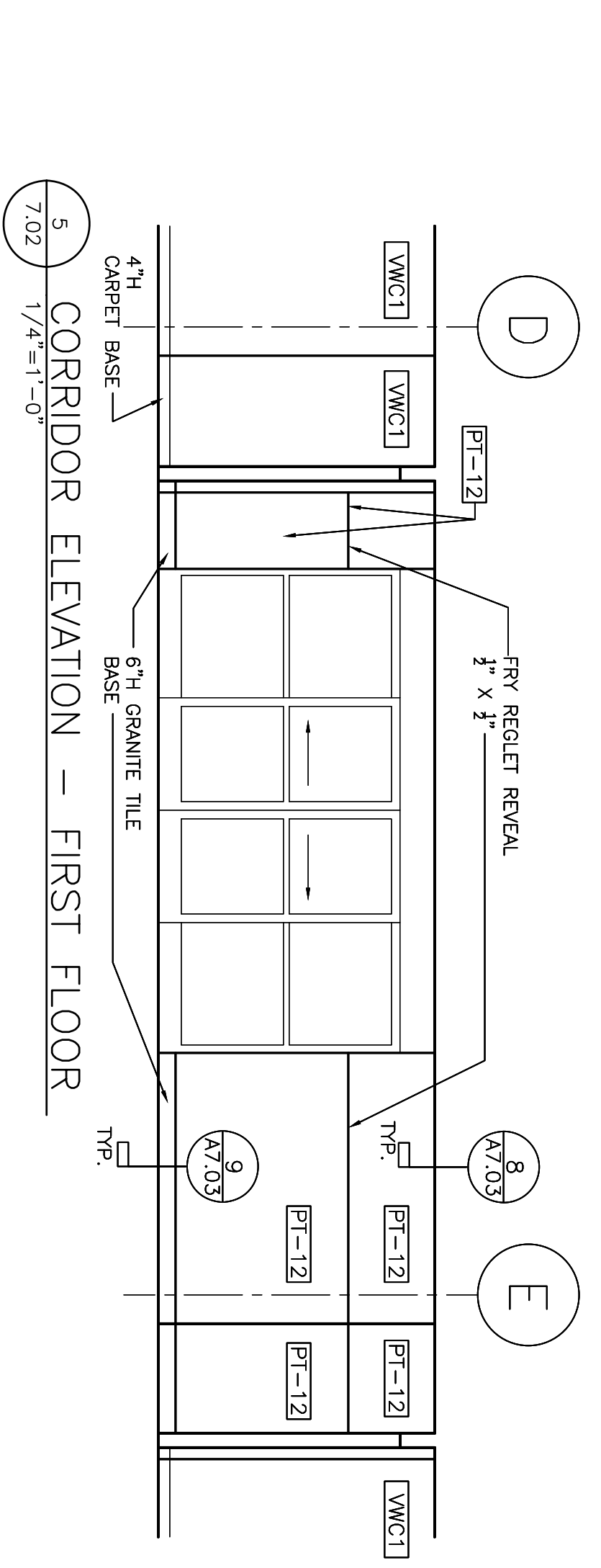
3 WEST LOBBY ELEVATION
1/4"=1'-0"



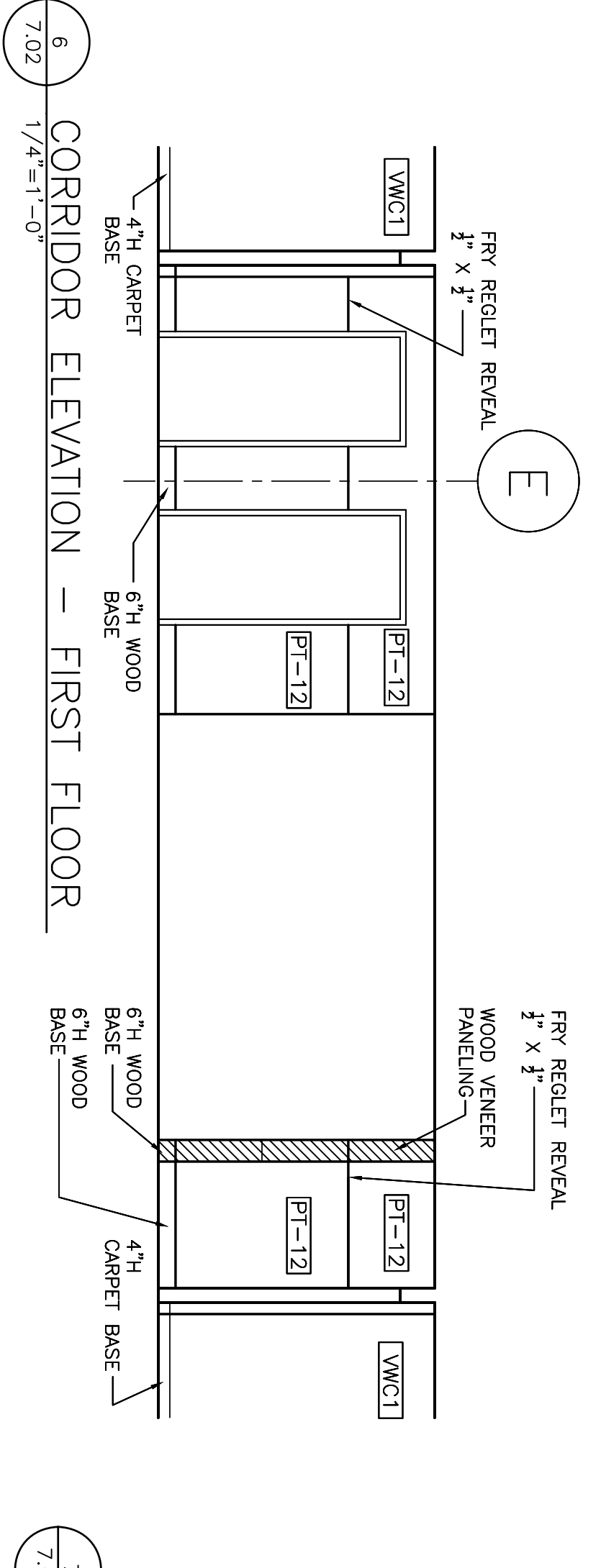
2 LOBBY ELEVATION
1/4"=1'-0"



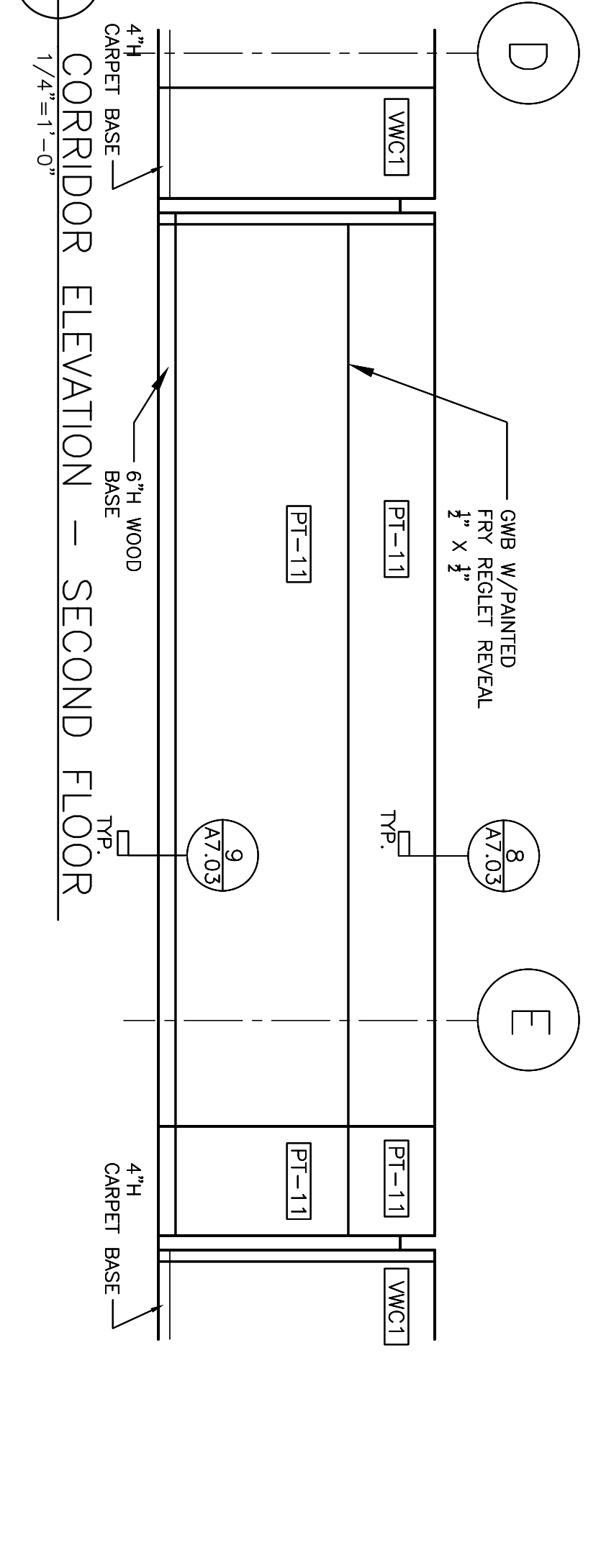
4 LOBBY ELEVATION
1/4"=1'-0"



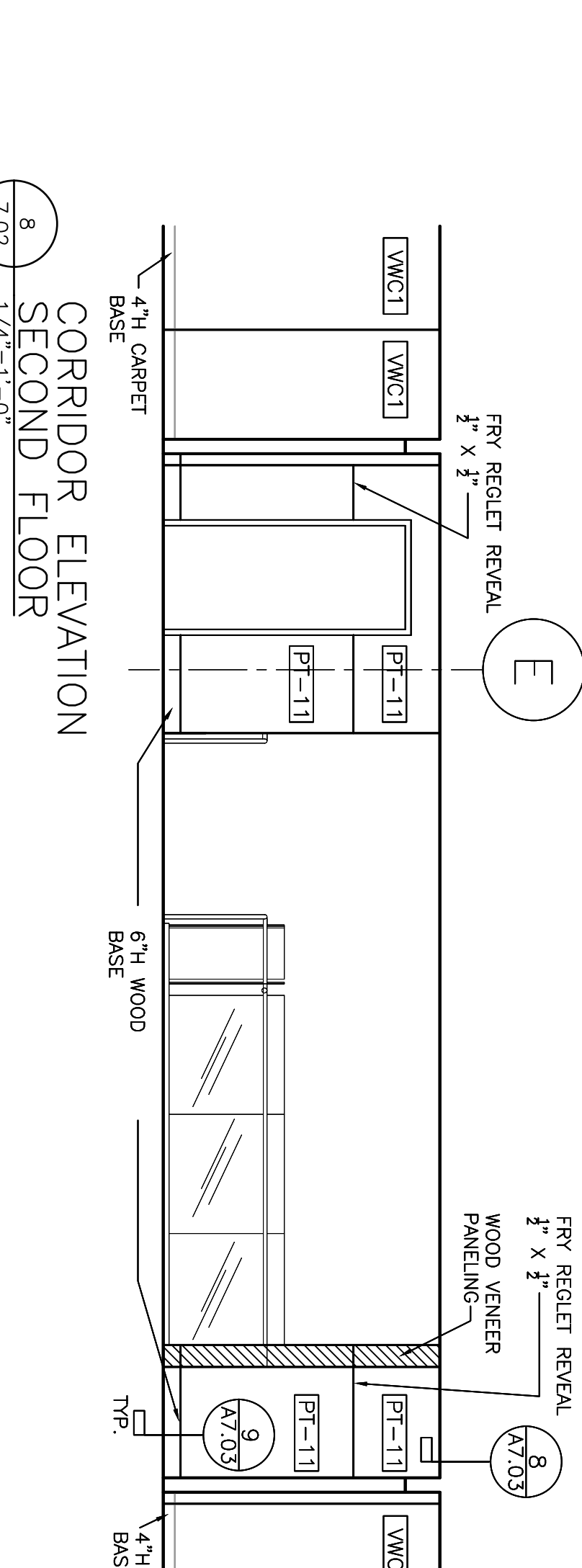
5 CORRIDOR ELEVATION - FIRST FLOOR
1/4"=1'-0"



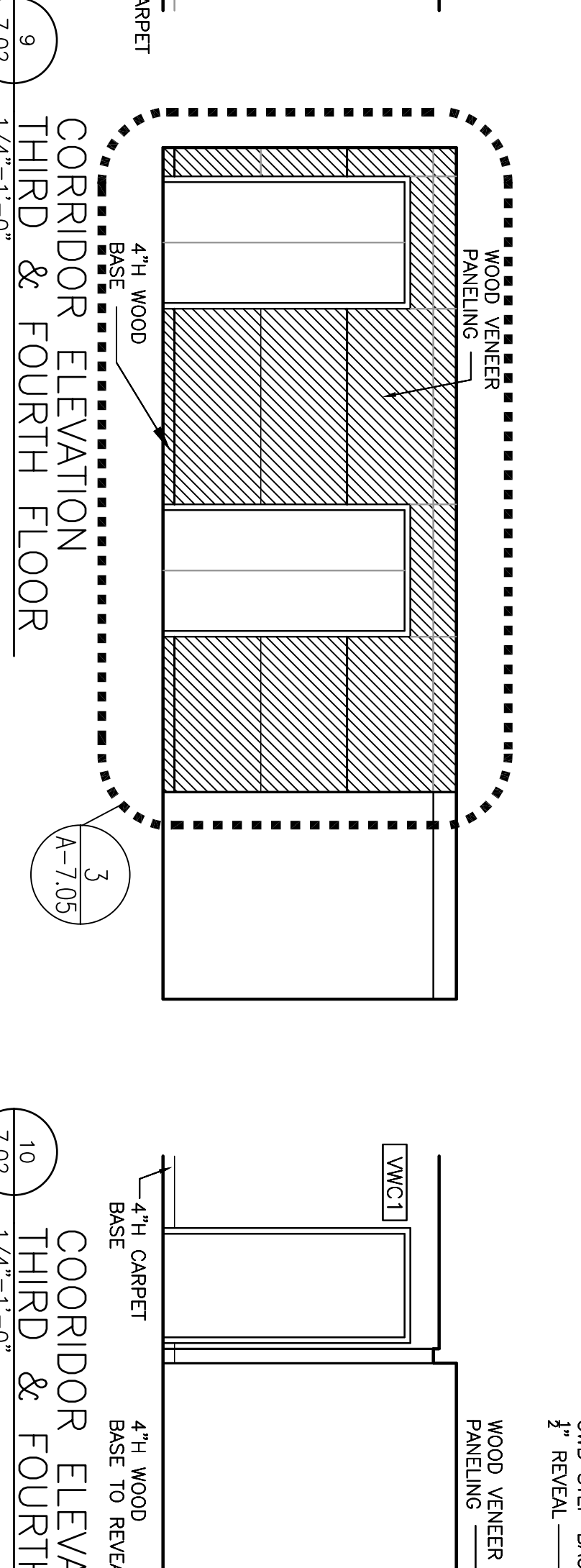
6 CORRIDOR ELEVATION - FIRST FLOOR
1/4"=1'-0"



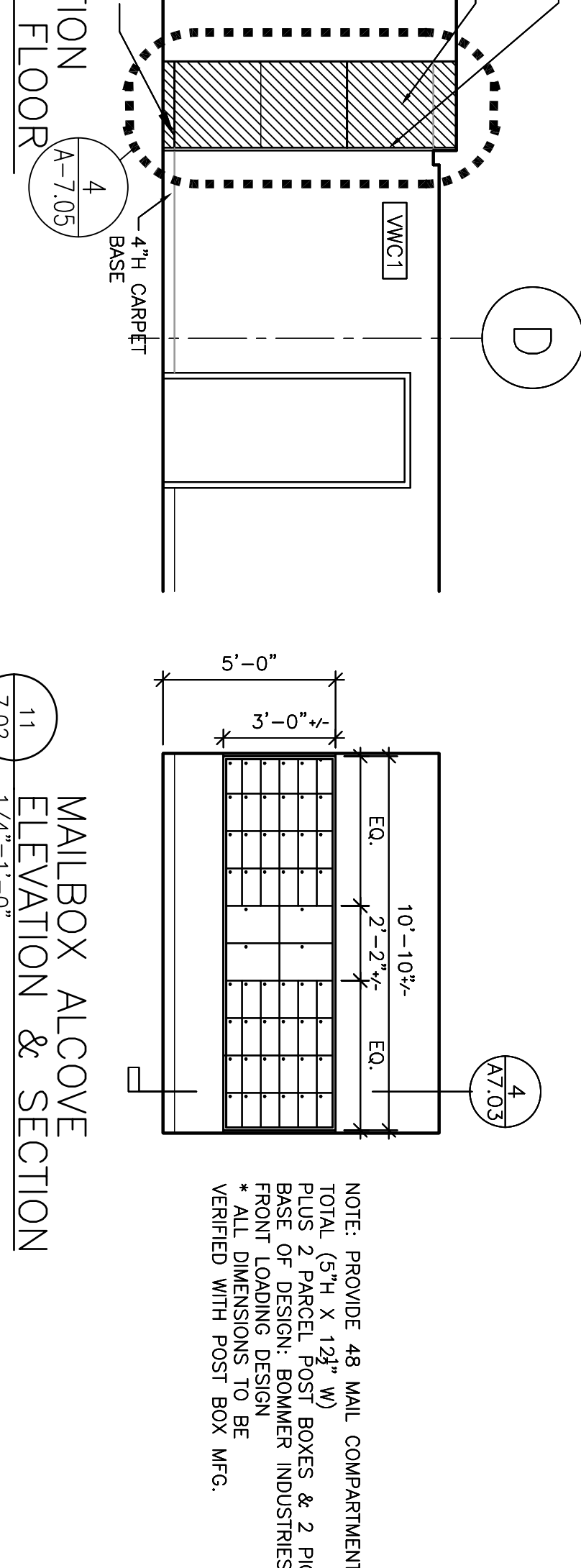
7 CORRIDOR ELEVATION - SECOND FLOOR
1/4"=1'-0"



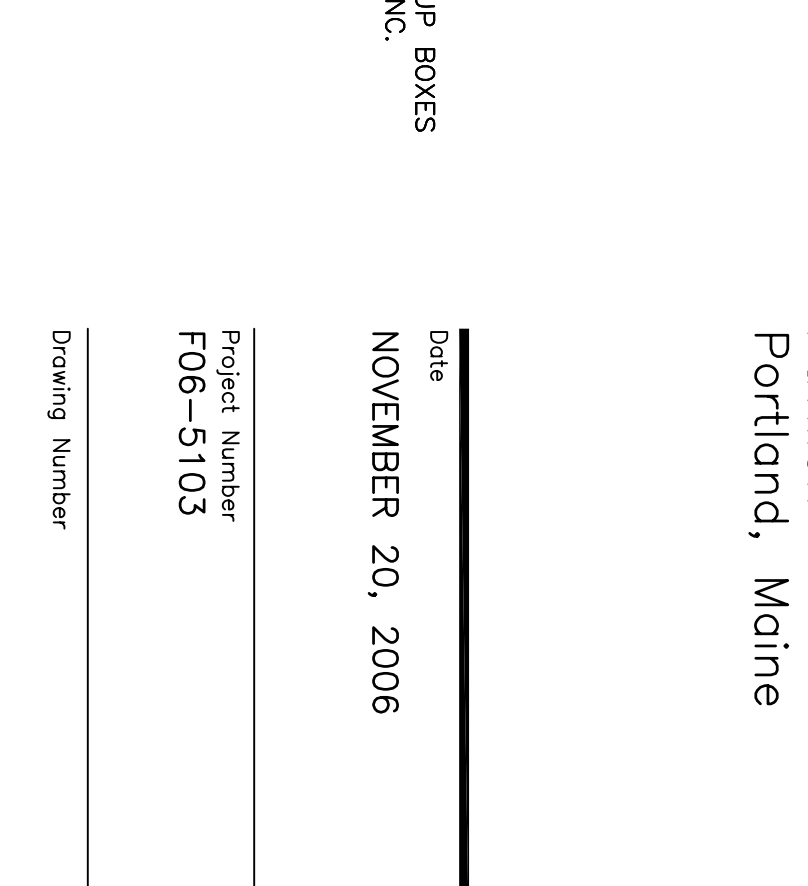
8 CORRIDOR ELEVATION SECOND FLOOR
1/4"=1'-0"



9 CORRIDOR ELEVATION THIRD & FOURTH FLOOR
1/4"=1'-0"



10 CORRIDOR ELEVATION THIRD & FOURTH FLOOR
1/4"=1'-0"



11 MAILBOX ALCOVE ELEVATION & SECTION
1/4"=1'-0"

NOTE: PROVIDE 48 MAIL COMPARTMENTS
TOTAL (5'11" X 12" W)
PLUS 2 PAPER POST BOXES & 2 PICKUP BOXES
FRONT LOADING DESIGN
* ALL DIMENSIONS TO BE
VERIFIED WITH POST BOX MFG.