

**Francis  
Cauftman  
Foley  
Hoffmann**

2120 Arch Street  
Portland, ME 04103  
Telephone: (414) 277-4500  
Facsimile: (414) 277-1055

**STRUCTURAL ENGINEERS  
FRANCIS CAUFTMAN FOLEY  
HOFFMANN ASSOCIATES**

SUITE 175  
100 WALKER STREET  
PORTLAND, ME 04103  
P (603) 644-4570  
F (603) 644-5472

**M/E/P ENGINEER  
FRANCIS CAUFTMAN FOLEY  
HOFFMANN ASSOCIATES**

1500 WALKER STREET, SUITE 1400  
PHILADELPHIA, PA 19102  
P 215-252-2106  
F 215-252-2108

Revisions  
11-20-06 CONSTRUCTION DOCUMENTS ISSUED

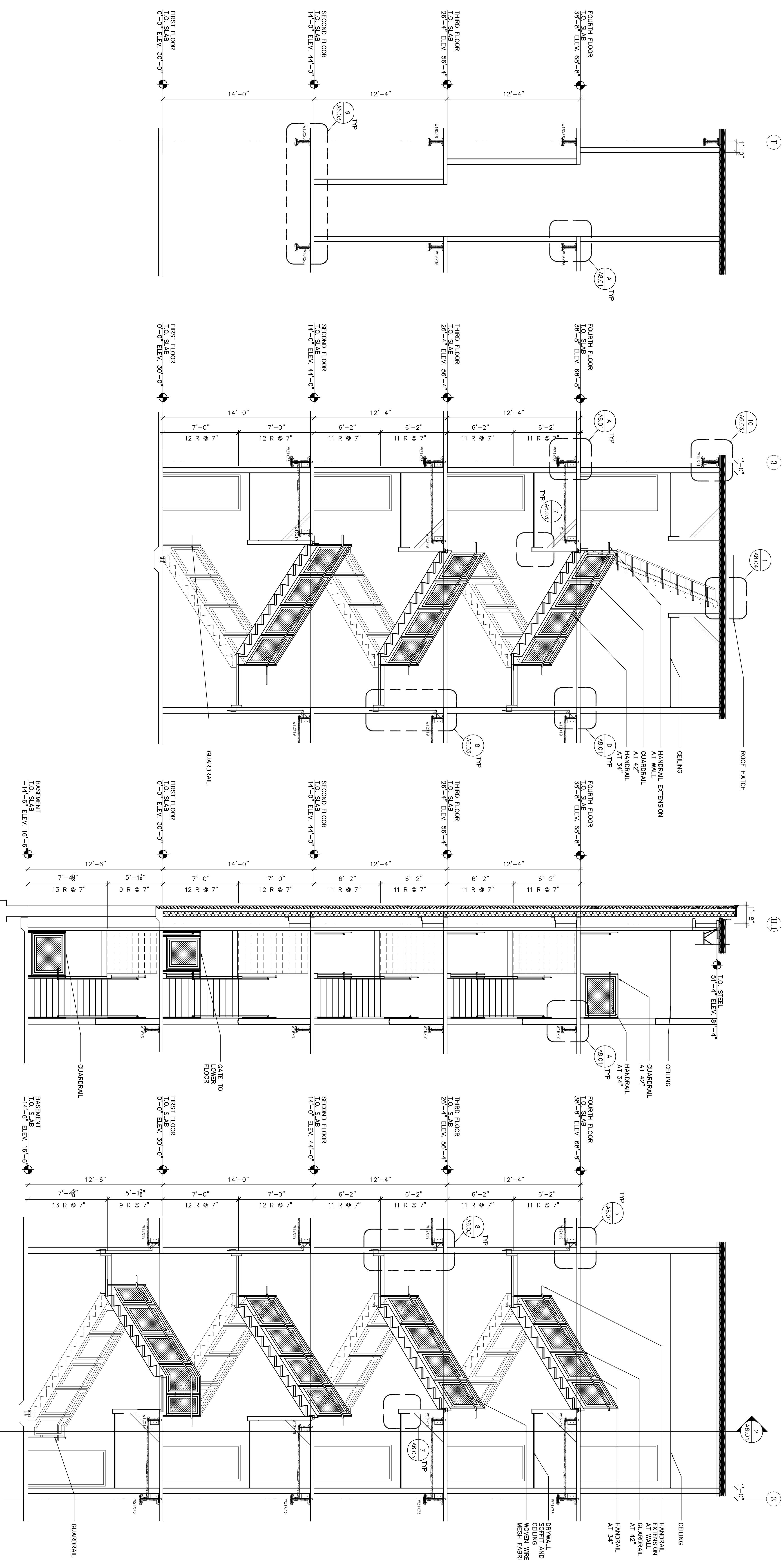
Sheet  
STAIR & SHAFT SECTIONS

Project Title  
**Landmark Healthcare  
Facilities LLC  
Fore River Medical  
Pavilion  
Portland, Maine**

Date  
**NOVEMBER 20, 2006**

Project Number  
**F06-5103**

Drawing Number  
**A6.01**



4 SHAFT SECTION  
A6.01 1/4"=1'-0"

3 STAIR 'A' SECTION  
A6.01 1/4"=1'-0"

2 STAIR 'B' SECTION  
A6.01 1/4"=1'-0"

1 STAIR 'B' SECTION  
A6.01 1/4"=1'-0"