

**Francis
Caufman
Foley
Hoffmann**

Francis Caufman 2120 Arch Street
Portland, ME 04103
Architects Ltd. 215-588-8250

STRUCTURAL ENGINEERS
FRANCIS CAUFMAN FOLEY
195 COLLEGE AVENUE
SUITE 175
PORTLAND, ME 04103
P (603) 645-8570
F (610) 645-9572

M/E/P ENGINEER
NORTH STAR CONSULTANTS
1500 WALKER STREET, SUITE 1400
PHILADELPHIA, PA 19102
P 215-252-2106
F 215-252-2106

Revisions
11-20-06 CONSTRUCTION DOCUMENTS ISSUED

Sheet
FOURTH FLOOR REFLECTED
CEILING PLAN

Project Title
Landmark Healthcare
Facilities LLC
Fore River Medical
Pavilion
Portland, Maine

Date
NOVEMBER 20, 2006

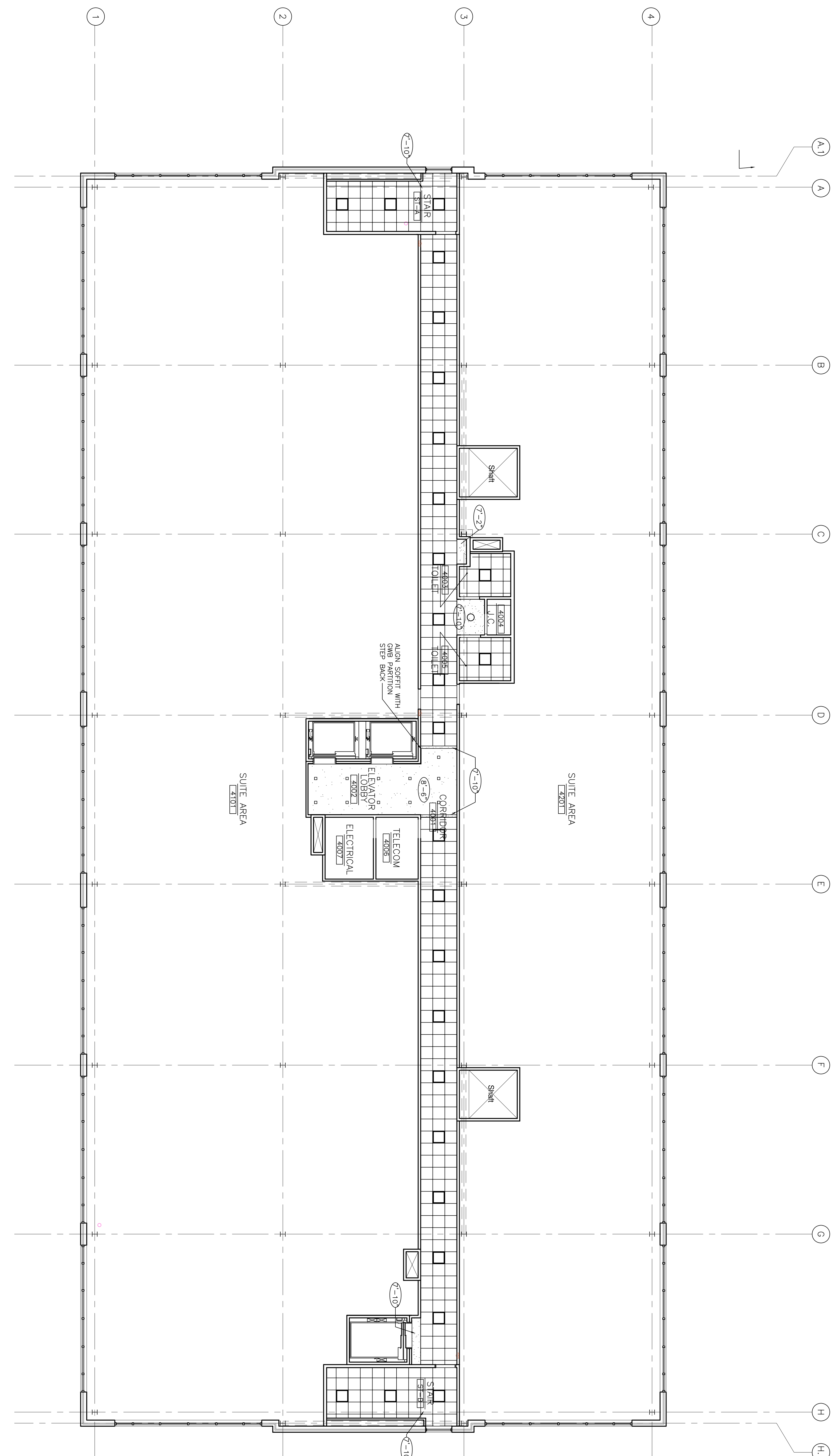
Project Number
FO6-5103

Drawing Number

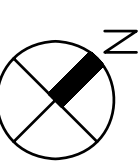
A5.04

CEILING NOTES

1. CLG. HT: 8'-0" AFF UNO.
2. CEILING DEVICES SHOWN ARE FOR INFORMATION AND ESTHETIC PURPOSES ONLY. COORDINATE ALL LIGHTING FIXTURES, DIFFUSERS, SMOKE DETECTORS, SPRINKLERS, FIRE ALARM STATIONS & EXIT SIGNS WITH MEP DRAWINGS.



FOURTH FLOOR REFLECTED CEILING PLAN
1/8"=1'-0"



CEILING FINISH LEGEND	
[Symbol]	NO FINISH CEILING
[Symbol]	ACT CEILING GRID
[Symbol]	PTD GWB CEILING
CEILING SYMBOL LEGEND	
[Symbol]	2'x4' REG. INDIRECT/DIRECT FLUOR.
[Symbol]	2'x2' REC. INDIRECT/DIRECT FLUOR.
[Symbol]	CUBICAL CURTAIN TRACK
[Symbol]	WALL WASHER
[Symbol]	DOWNLIGHT
[Symbol]	SKY DOME LIGHT
[Symbol]	PENDENT LIGHT
[Symbol]	CONE LIGHT
[Symbol]	SCONCE
[Symbol]	NURSE CALL LANTERN
[Symbol]	CEILING HEIGHT
[Symbol]	6'x4' LINEAR DIFFUSER
[Symbol]	ACCESS PANEL
[Symbol]	SMOKE DETECTOR
[Symbol]	SPEAKER
[Symbol]	EXHAUST FAN
[Symbol]	2'x2' MECH. SUPPLY REGISTER
[Symbol]	2'x2' MECH. RETURN REGISTER
[Symbol]	ACCESS PANEL
[Symbol]	EXIT SIGN
[Symbol]	SPRINKLER HEAD