

**Francis**

**Cauffman**

**Foley**

**Hoffmann**

Francis Cauffman  
2120 Arch Street  
Portland, ME 04103  
Architects Ltd.  
215-588-8250

STRUCTURAL ENGINEERS  
FRANCIS CAUFFMAN ARCHITECTS ASSOCIATES  
199 COLLEGE AVENUE  
SUITE 175  
PORTLAND, ME 04103  
P (603) 644-8572  
F (603) 644-9572

M/E/P ENGINEER  
MORSE ENGINEERING  
1500 WALKER STREET, SUITE 1400  
PHILADELPHIA, PA 19102  
P 215-252-2106  
F 215-252-2106

Revisions  
11-20-06  
CONSTRUCTION DOCUMENTS ISSUED

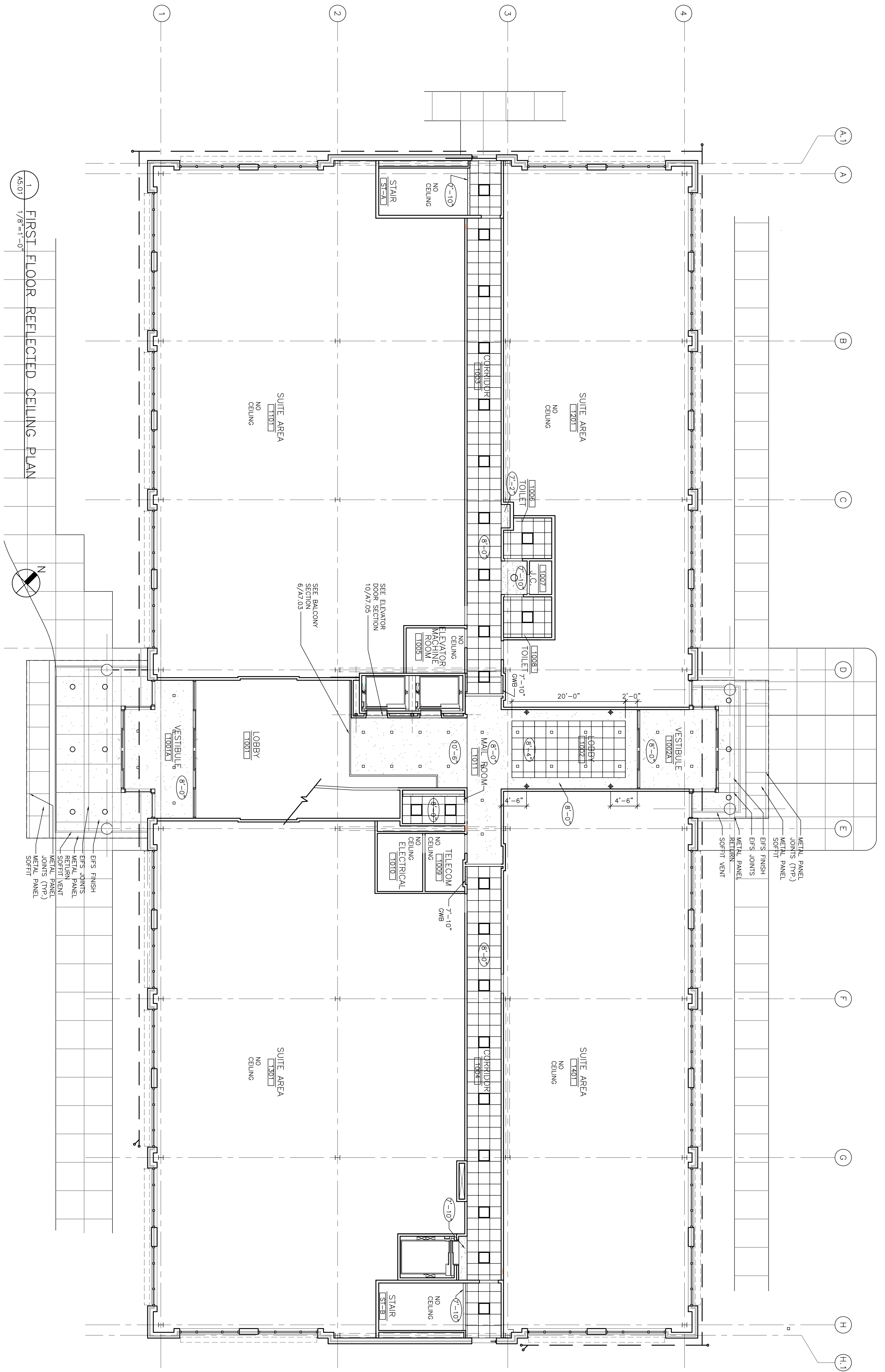
**CEILING NOTES**

1. CLG. HT: 8'-0" AFF UNO.
2. CEILING DEVICES SHOWN ARE FOR INFORMATION AND AESTHETIC PURPOSES ONLY. COORDINATE ALL LIGHTING FIXTURES, DIFFUSERS, SMOKE DETECTORS, SPRINKLERS, FIRE ALARM STATIONS & EXIT SIGNS WITH MEP DRAWINGS.

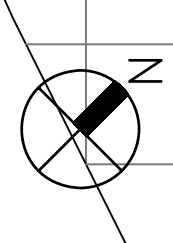
CEILING FINISH LEGEND	
	NO FINISH CEILING
	ACT CEILING GRID
	PTD GWB CEILING

CEILING SYMBOL LEGEND	
	2'x4' REC. INDIRECT/DIRECT FLOOR.
	2'x2' REC. INDIRECT/DIRECT FLOOR.
	CUBICAL CURTAIN TRACK
	WALL WASHER
	DOWNLIGHT
	SKY DOME LIGHT
	PENDENT LIGHT
	COVE LIGHT
	SCONCE
	NURSE CALL LANTERN
	CEILING HEIGHT
	6'x4' LINEAR DIFFUSER
	ACCESS PANEL
	SMOKE DETECTOR
	SPEAKER
	EXHAUST FAN
	2'x2' MECH. SUPPLY REGISTER
	2'x2' MECH. RETURN REGISTER
	ACCESS PANEL
	EXIT SIGN
	SPRINKLER HEAD



1 FIRST FLOOR REFLECTED CEILING PLAN  
1/8"=1'-0"  
AS.01



Project Title  
**Landmark Healthcare  
Facilities LLC**

Fore River Medical  
Pavilion  
Portland, Maine

Date  
**NOVEMBER 20, 2006**

Project Number  
**F06-5103**

Drawing Number  
**A5.01**