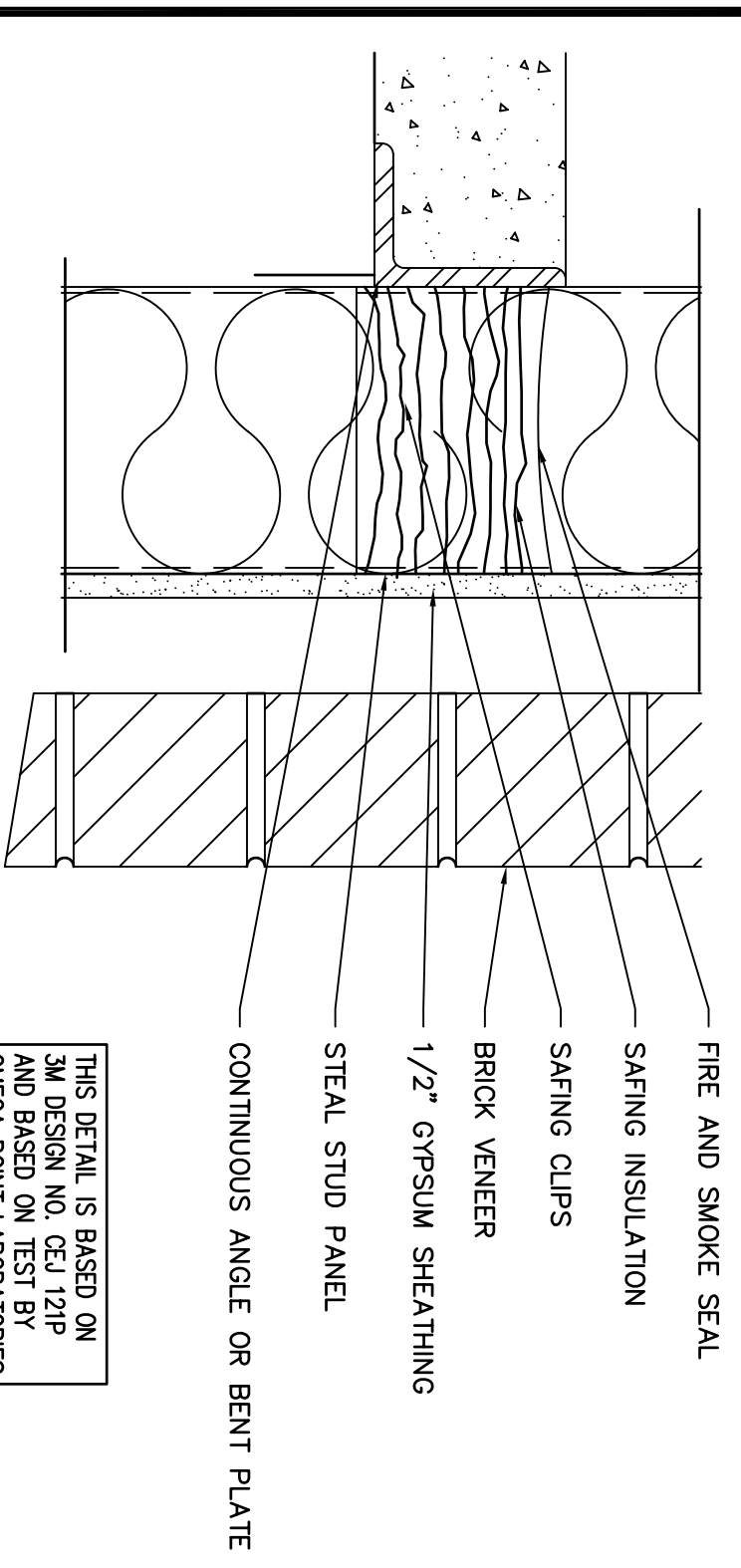
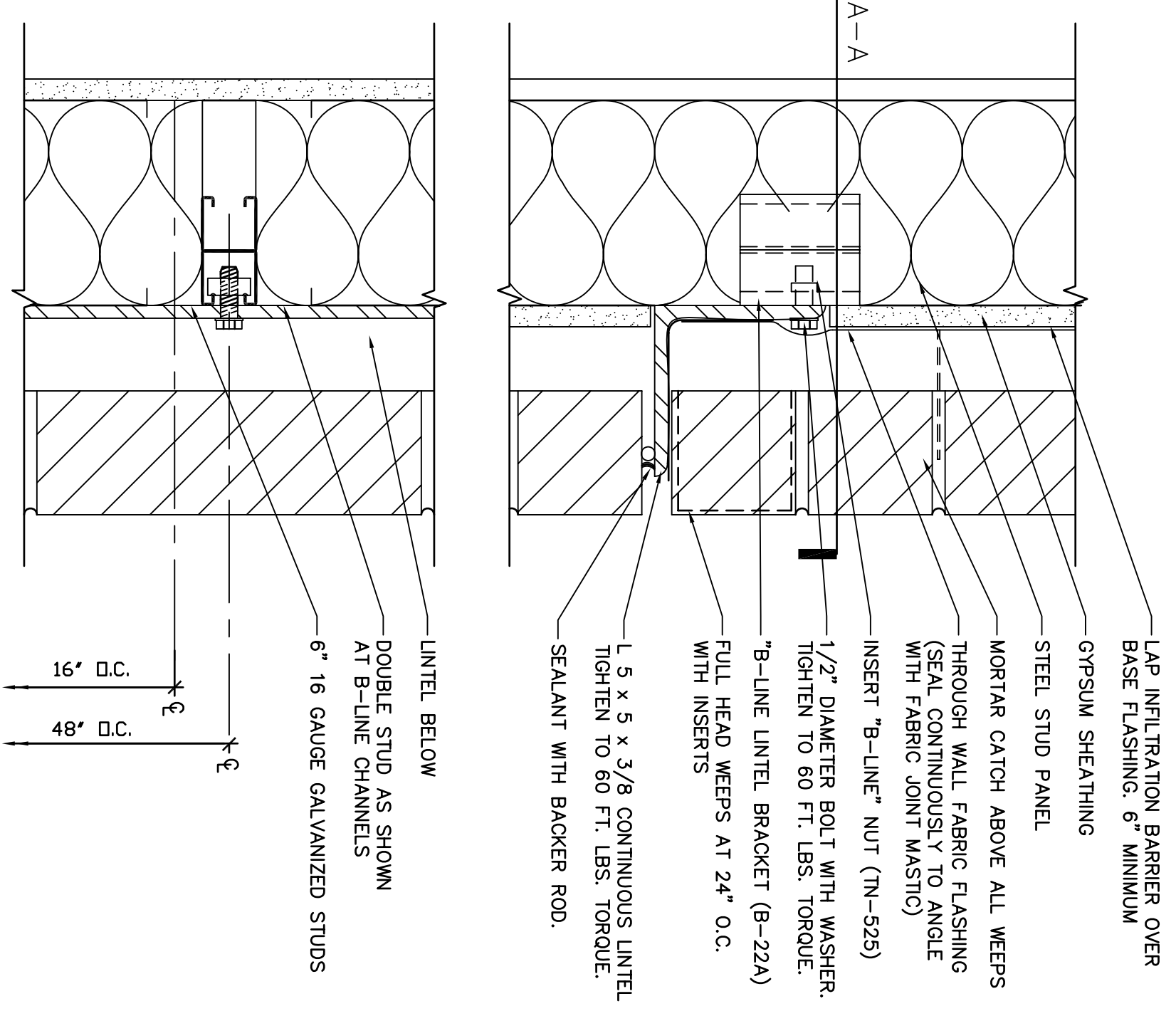


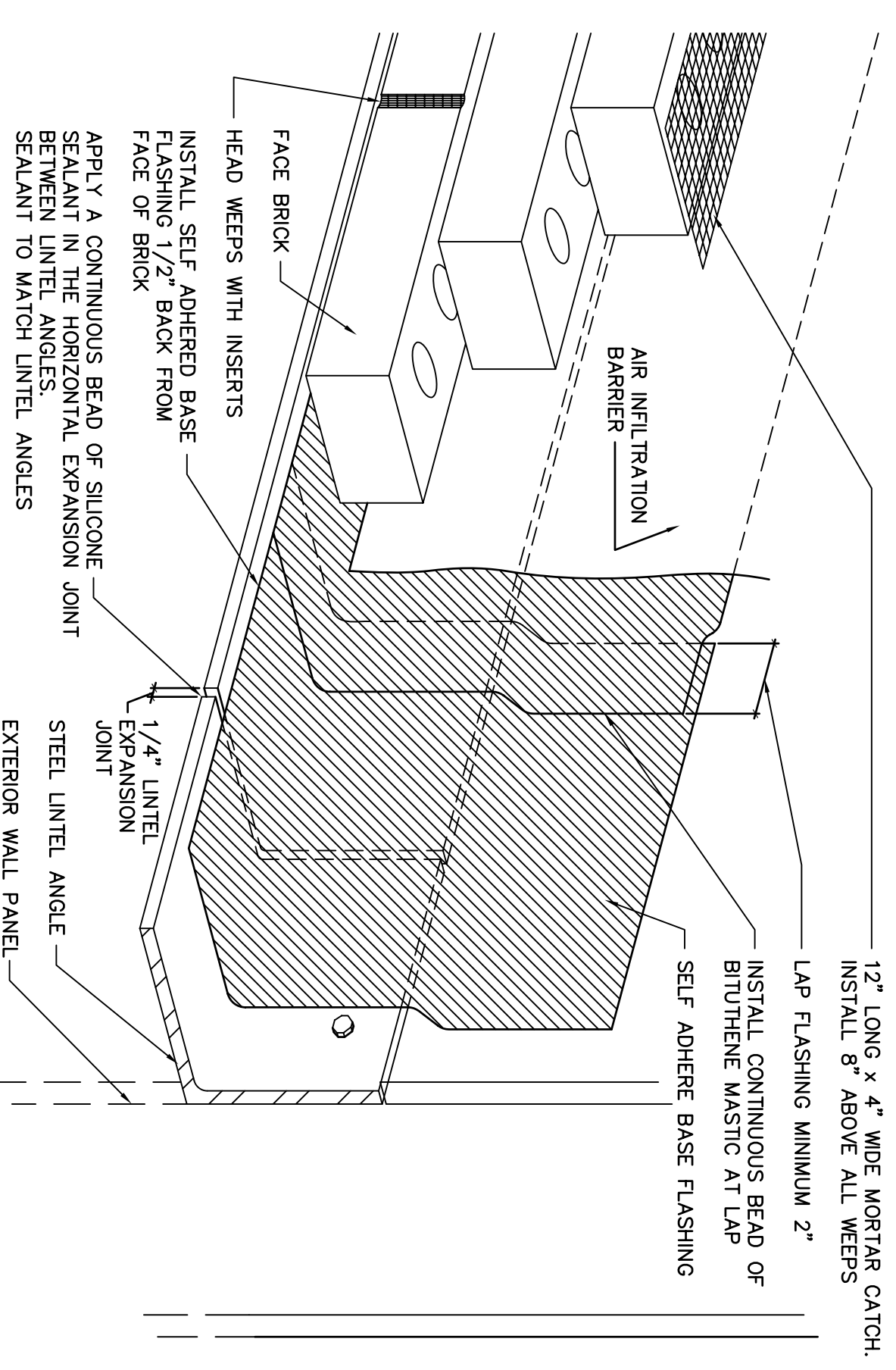
1 ROOF EDGE FASCIA @ PARAPET
3'-1"-0"



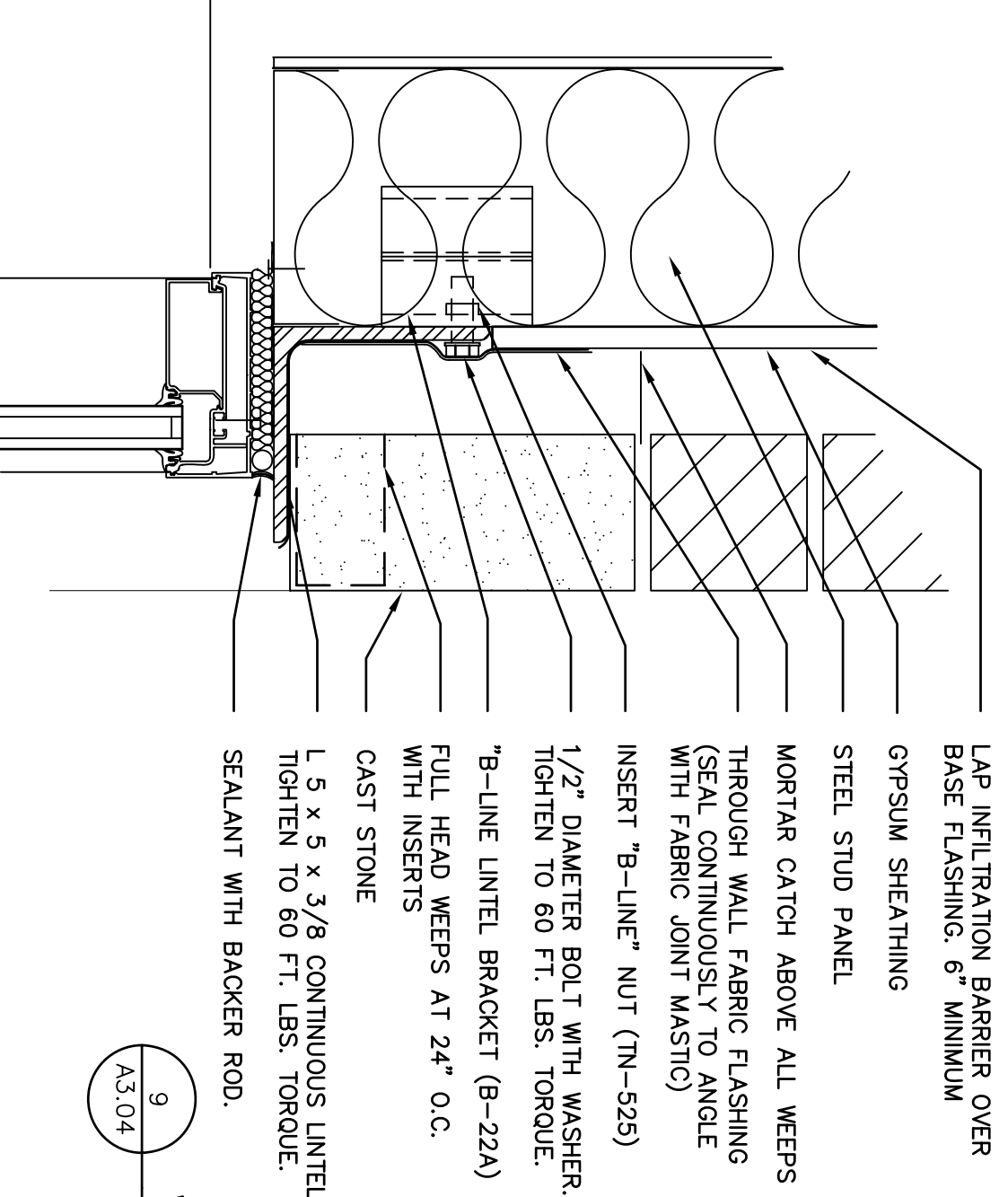
2 FIRE / SMOKE @ BUILDING PERIMETER
3'-1"-0"



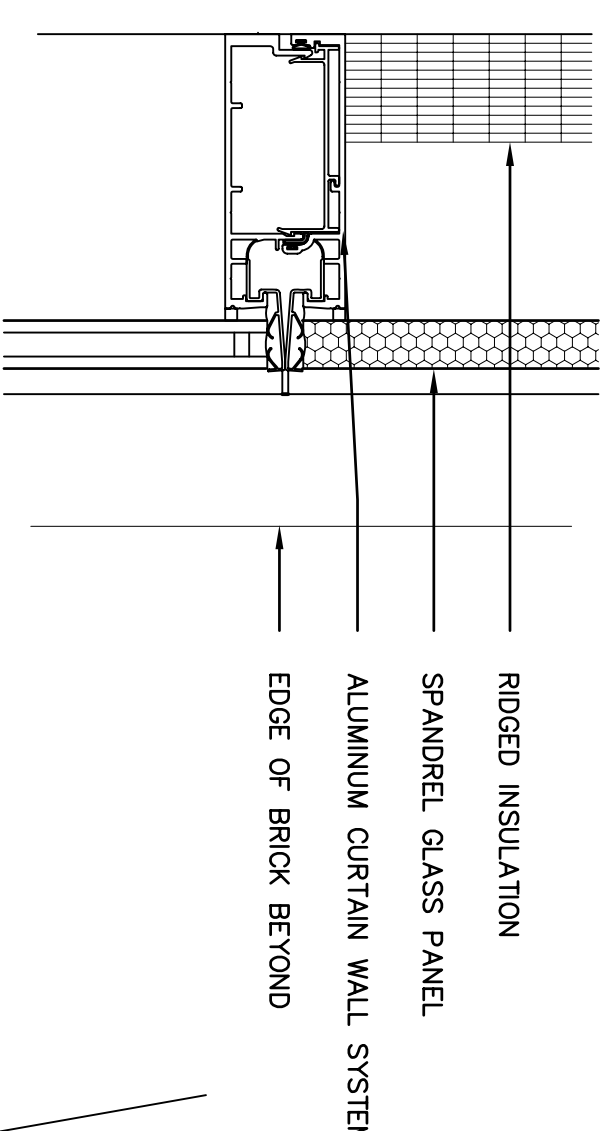
3 SHELF ANGLE
3'-1"-0"



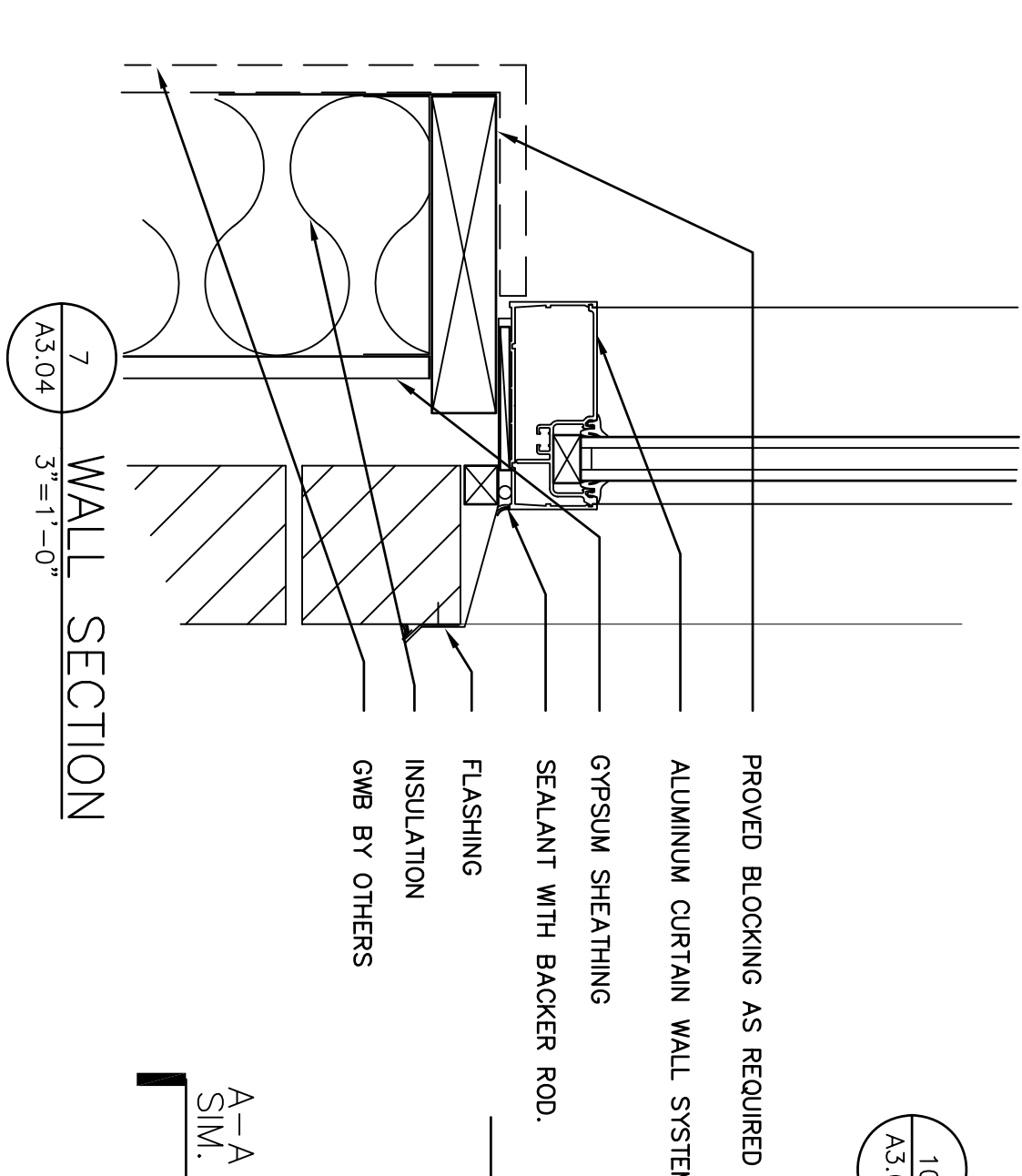
4 LINTEL ANGLE WINDOW HEAD
3'-1"-0"



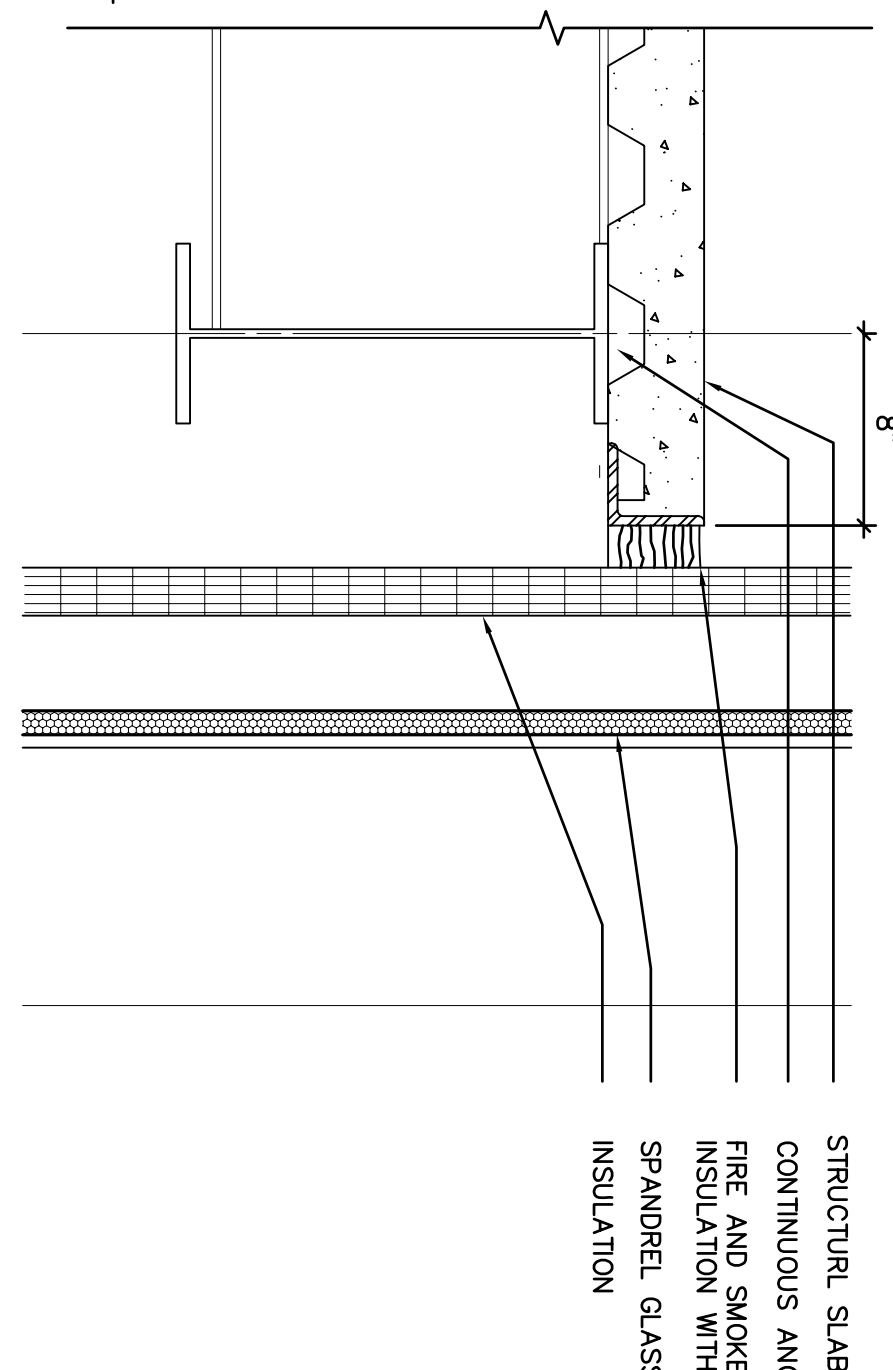
5 WALL SECTION
3'-1"-0"



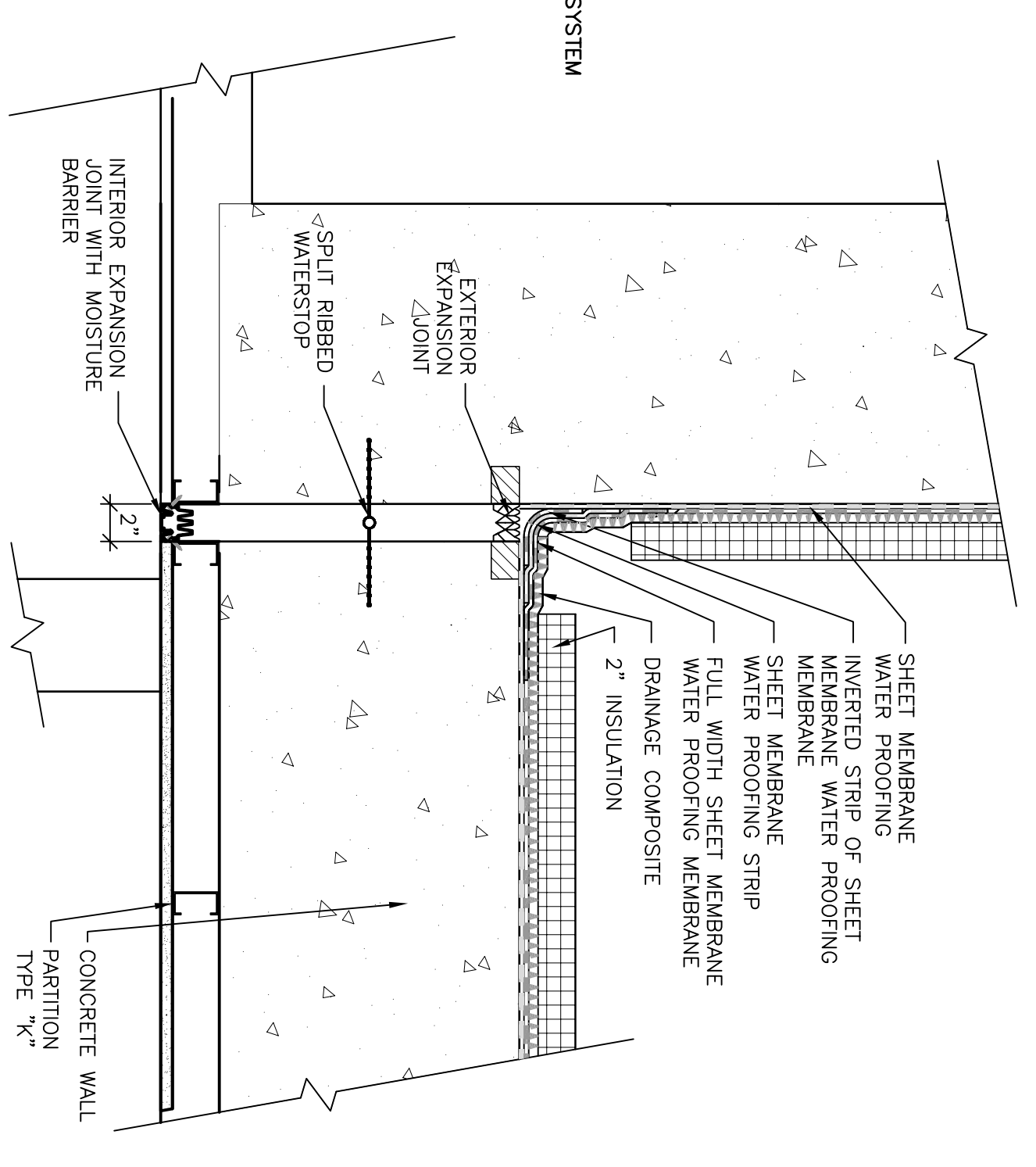
6 WALL SECTION
3'-1"-0"



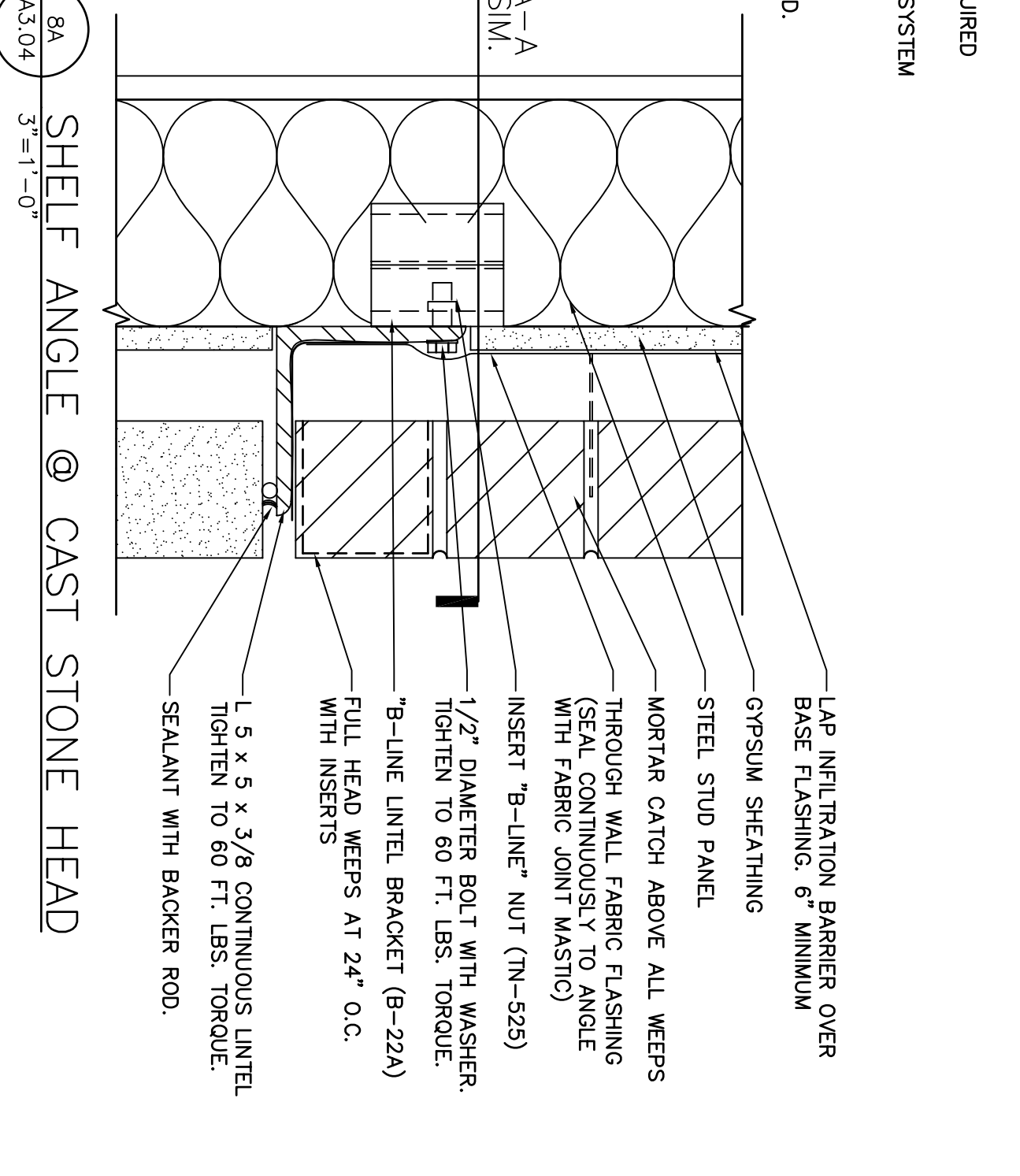
7 WALL SECTION
3'-1"-0"



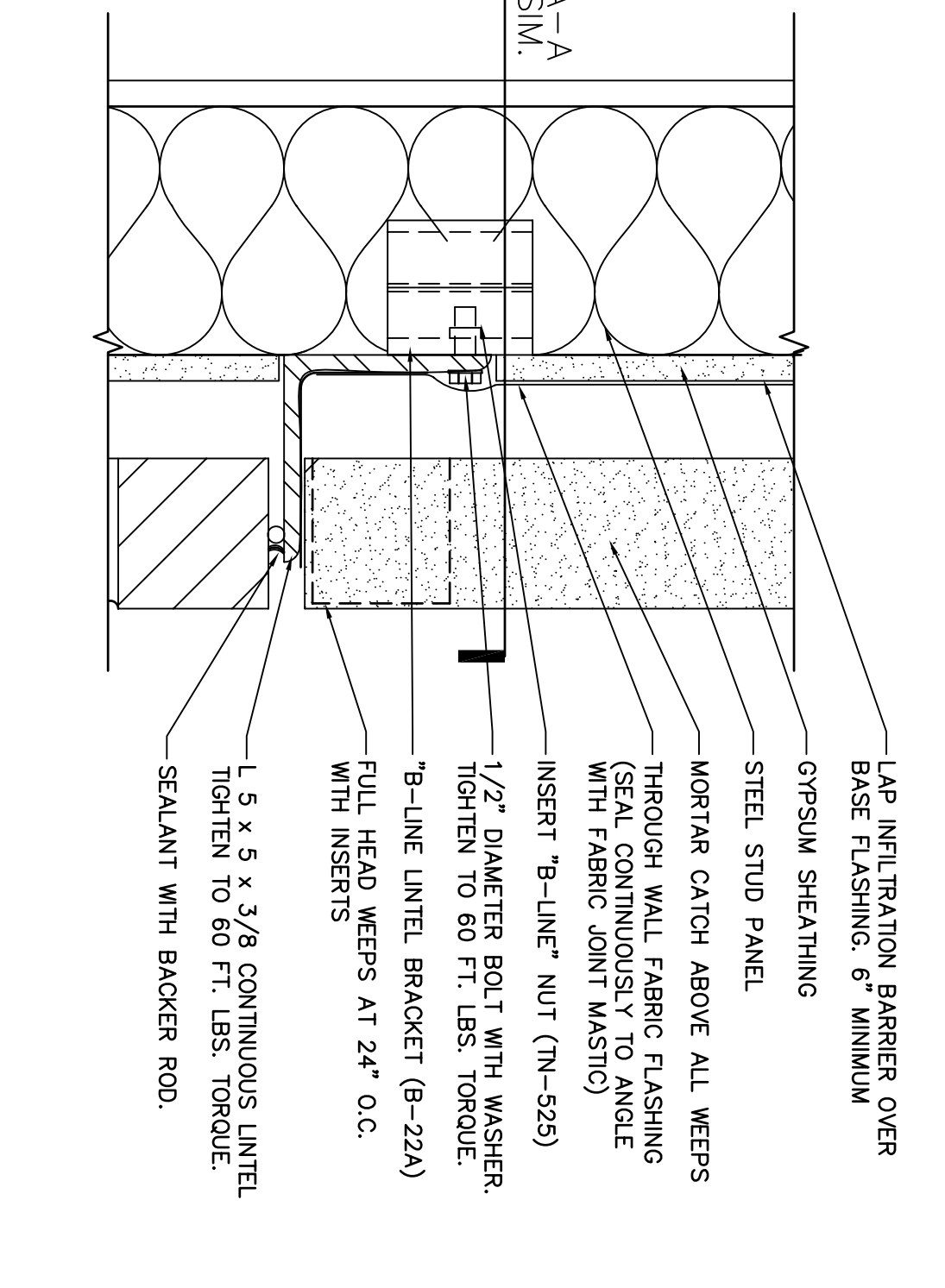
8 SHELF ANGLE @ CAST STONE
3'-1"-0"



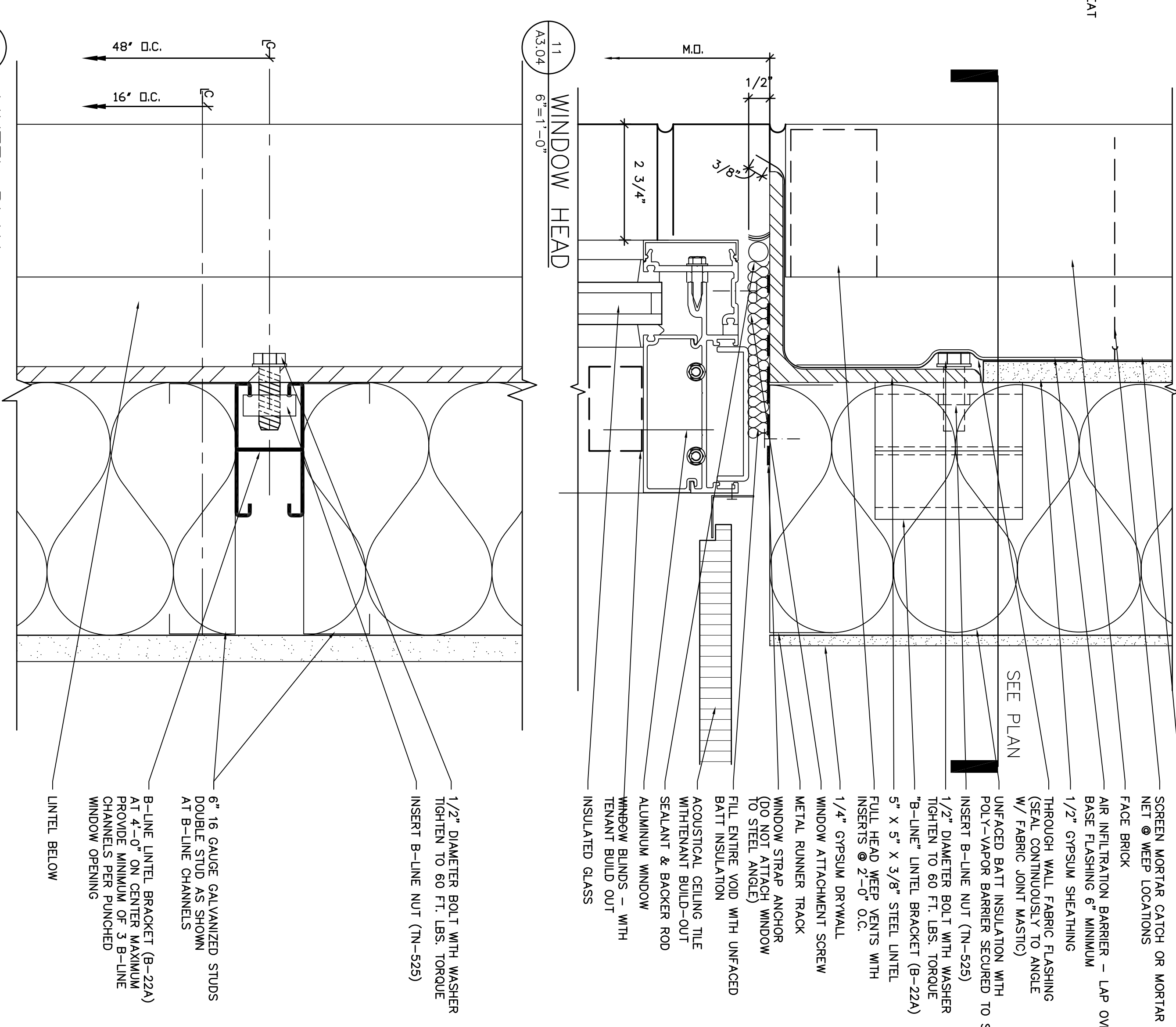
9 TUNNEL EXPANSION JOINT @ WALLS
1'-1/2"-1"-0"



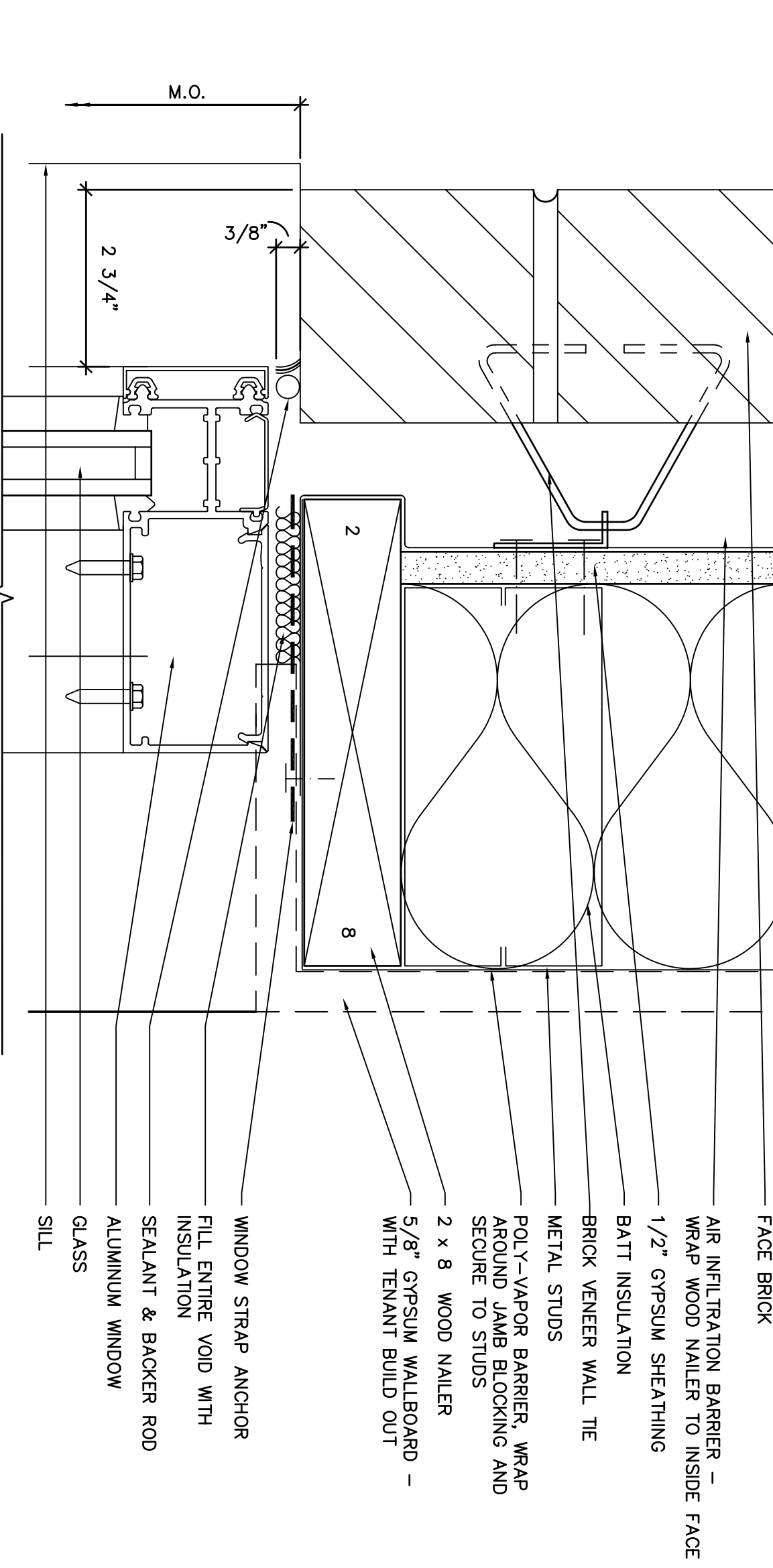
10 SHELF ANGLE @ CAST STONE HEAD
3'-1"-0"



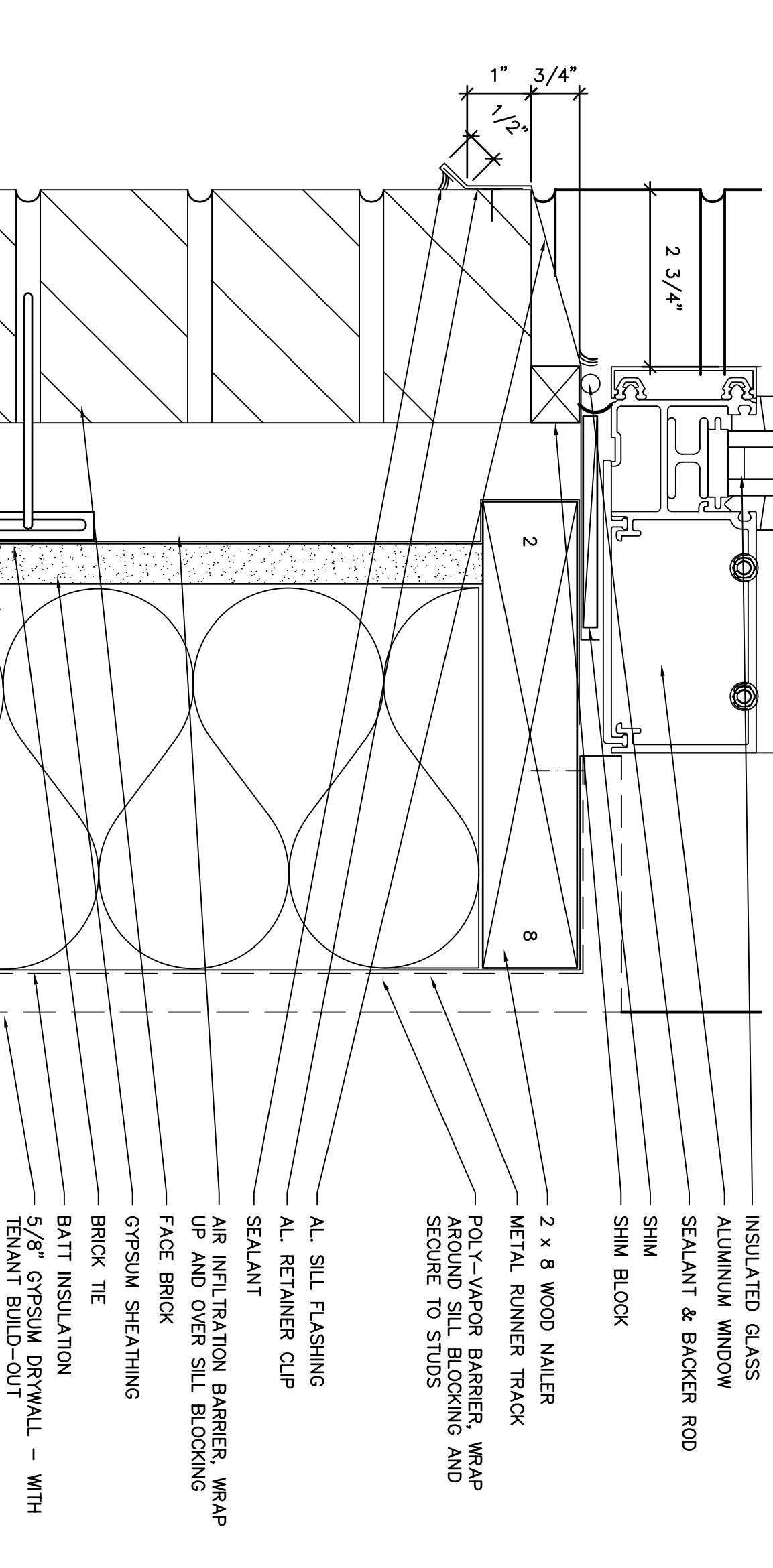
11 WINDOW HEAD
6'-1"-0"



12 LINTEL PLAN
6'-1"-0"



13 WINDOW JAMB
6'-1"-0"



14 WINDOW SILL
6'-1"-0"

LANDMARK HEALTHCARE FACILITIES, LLC
830 North Jefferson Street
Portland, ME 04102
Telephone: (414) 277-4500
Facsimile: (414) 277-1055

Francis Cauffman
Foley

Hoffmann
Francis Cauffman
2120 Arch Street
Portland, ME 04103
Architect: Ltd.

STRUCTURAL ENGINEER
FRANCIS CAUFFMAN & ASSOCIATES
119 COLLEGE AVENUE
SUITE 175
PORTLAND, ME 04103
P (603) 644-8503
F (603) 644-8572

M/E/P ENGINEER
FRANCIS CAUFFMAN & ASSOCIATES
1500 WALKER STREET, SUITE 1400
PHILADELPHIA, PA 19102
P (215) 252-2106
F (215) 252-2106

Revisions
11-20-06 CONSTRUCTION DOCUMENTS ISSUED

Project Title
Landmark Healthcare Facilities LLC
Fore River Medical Pavilion
Portland, Maine

Date
NOVEMBER 20, 2006

Project Number
F06-5103

Drawing Number
A3.04