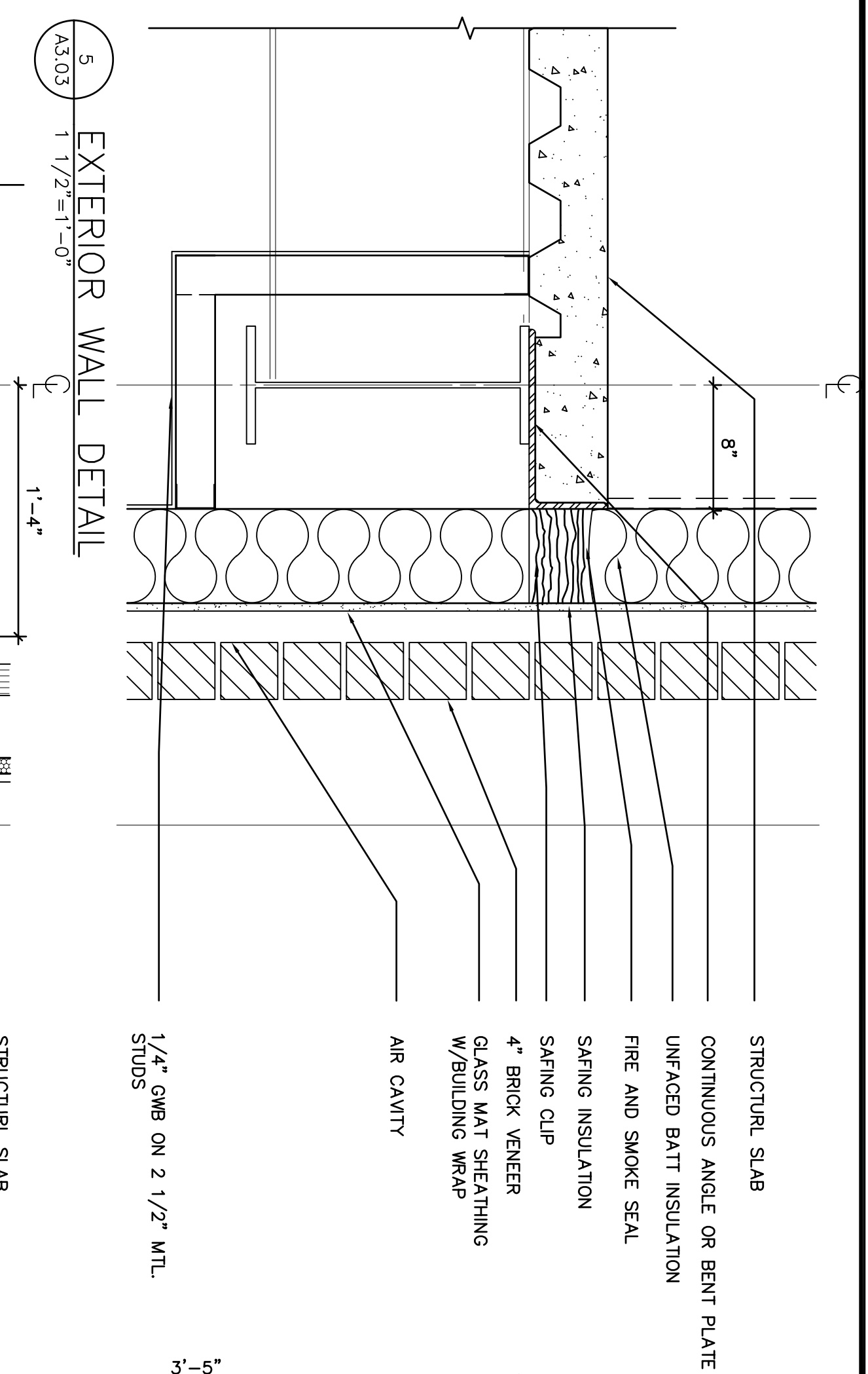
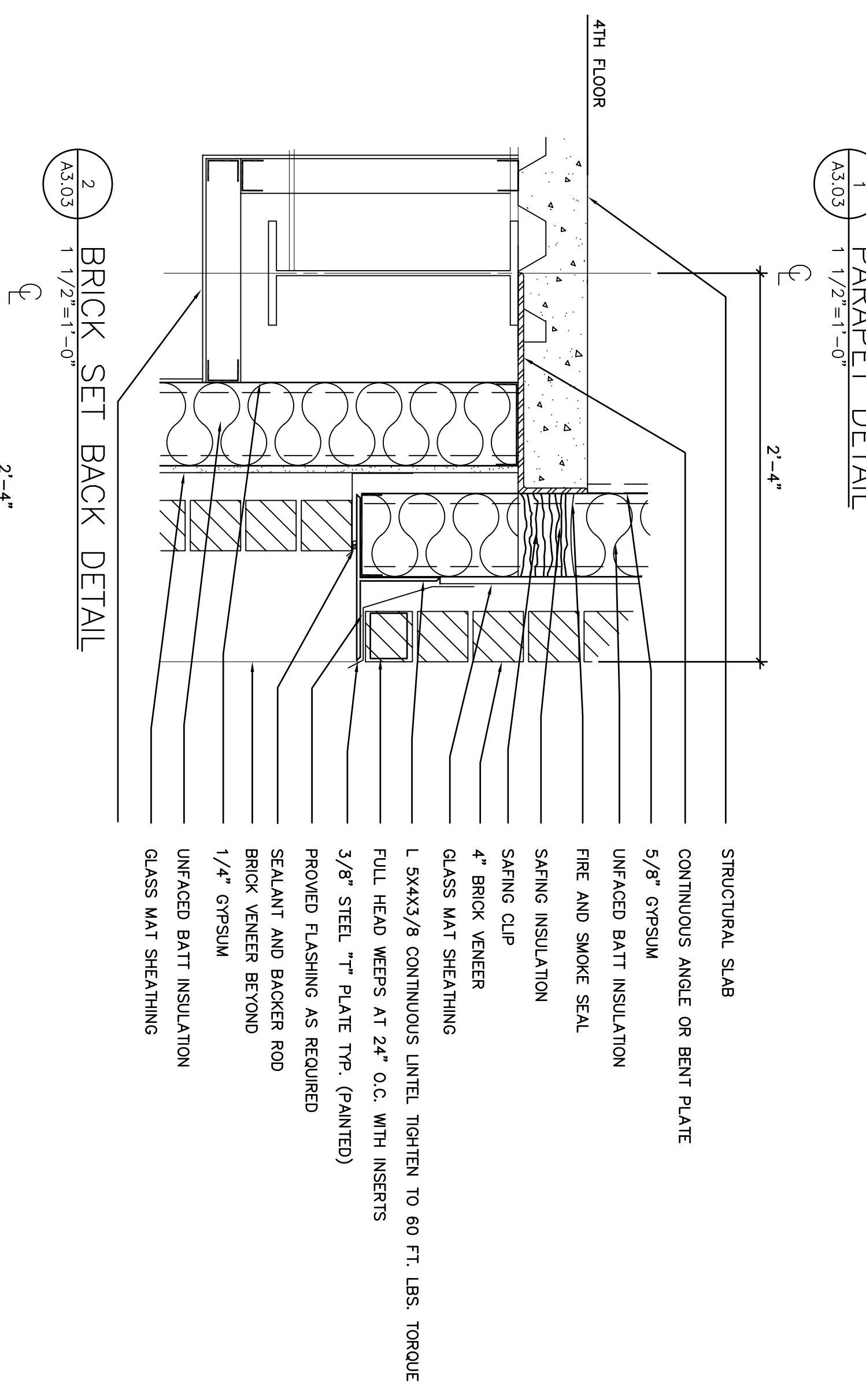


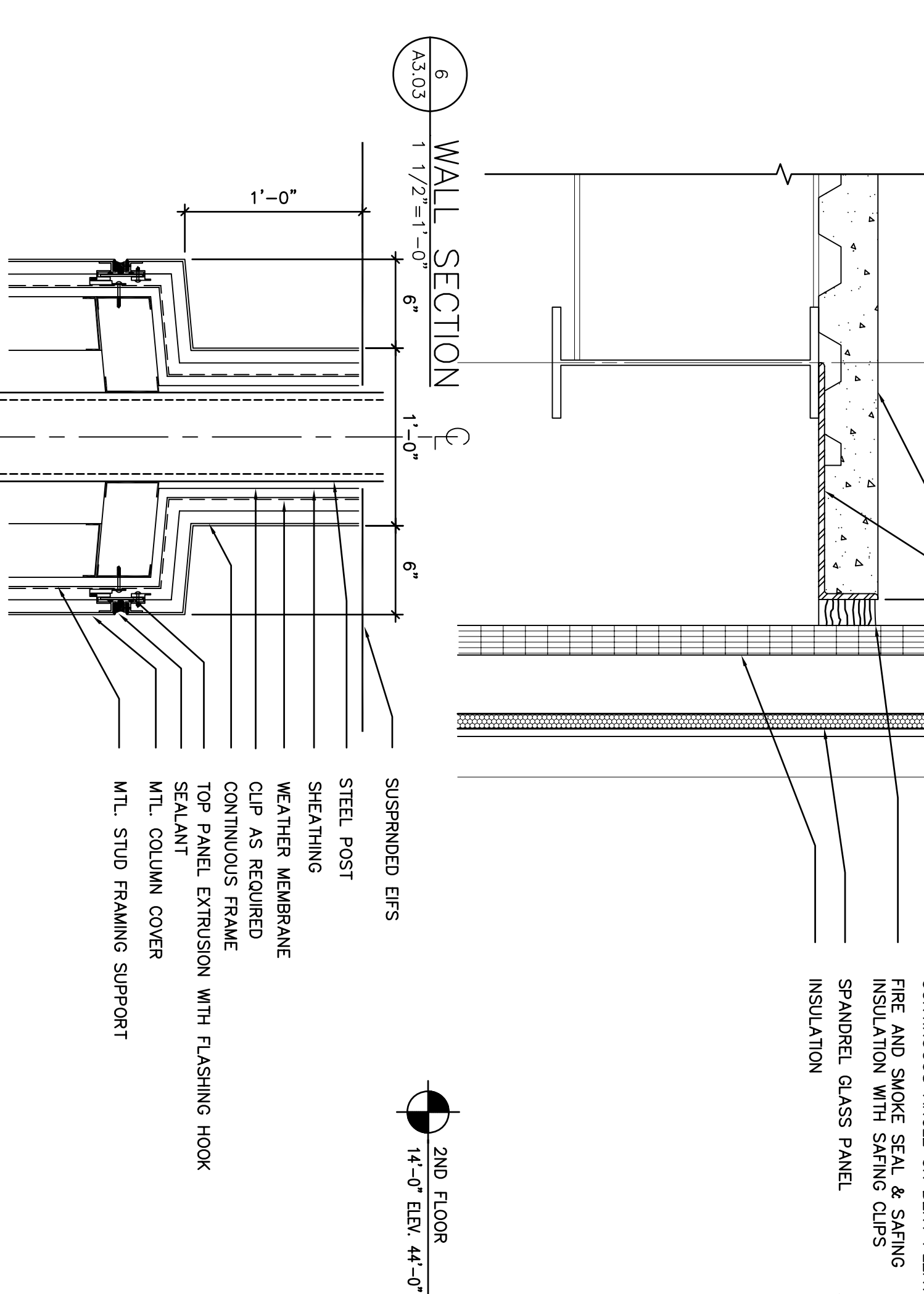
1/2" PLY WOOD ATTACHED TO BACK OF STEEL STUD
ROOF MEMBRANE OVERBONDING ADHESIVE
NON CURING SEALANT BY ROOFING CONTRACTOR
PREFINISHED METAL ROOF EDGE
#14 X 2" CORROSION RESISTANT FASTENERS @ 12" O.C.
WOODING MEMBRANE LIP OVER FRONT EDGE OF HALTER 3" AS SHOWN
SPM FLASHING SET IN BONDING ADHESIVE AGAINST WALL & IN SLOUCE
ADHESIVE OVER SPM.
SEALANT OVER FASTENER HEAD
BOARD INSULATION
6" STEEL STUD PANEL
1/2" GLASS MAT SHEATHING
AIR SPACE
CAST STONE
FIRE AND SMOKE SEAL
FULL HEAD WEPS
SAFFING INSULATION
SAFFING CLIP
CONTINUOUS ANGLE OR BENT PLATE
BRICK VENEER
UNFACED BATT INSULATION
1/2" GLASS MAT SHEATHING
1 1/2" METAL ROOF DECK



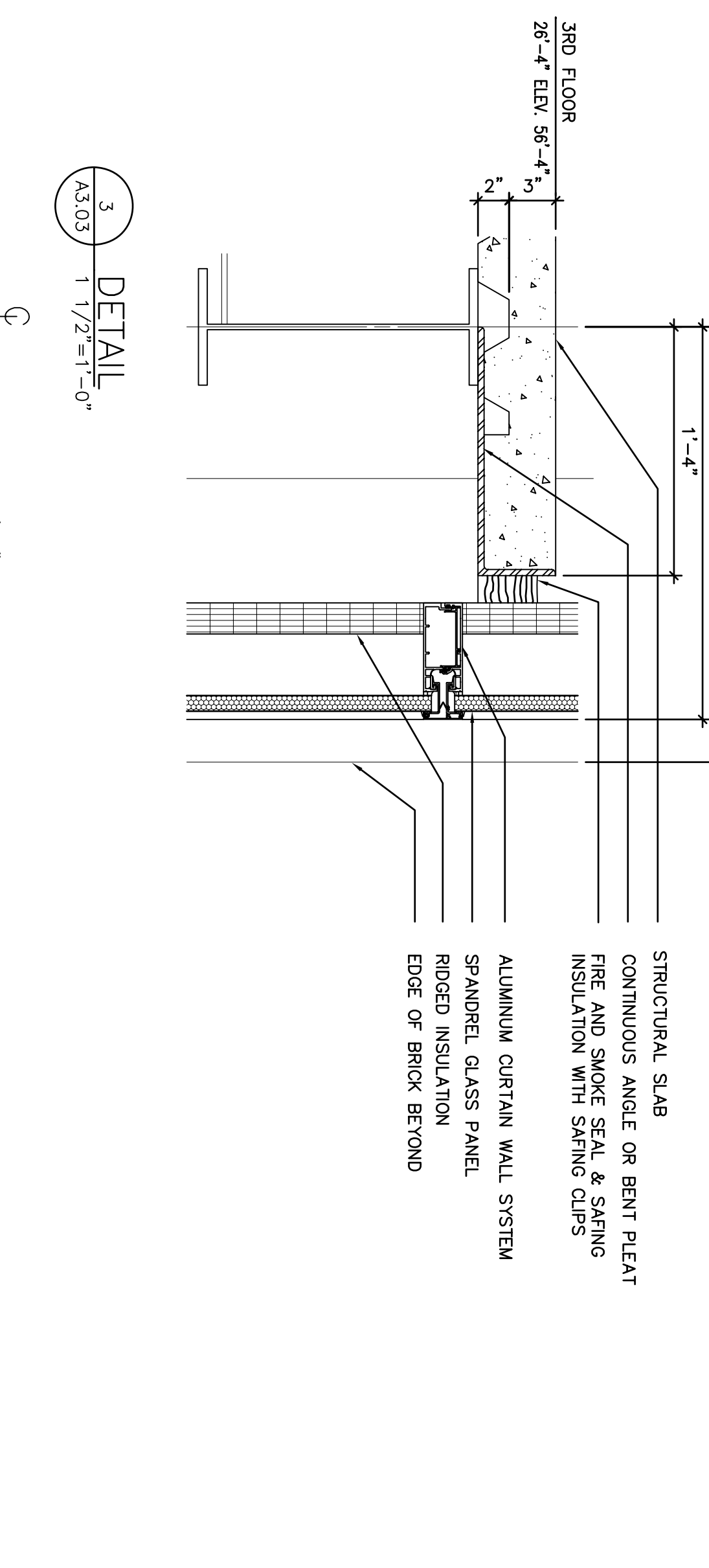
STRUCTURAL SLAB
CONTINUOUS ANGLE OR BENT PLATE
UNFACED BATT INSULATION
FIRE AND SMOKE SEAL
SAFFING INSULATION
SAFFING CLIP
4" BRICK VENEER
GLASS MAT SHEATHING
W/BUILDING WRAP
AIR CAVITY
1/4" GYM ON 2 1/2" MTL
STUDS



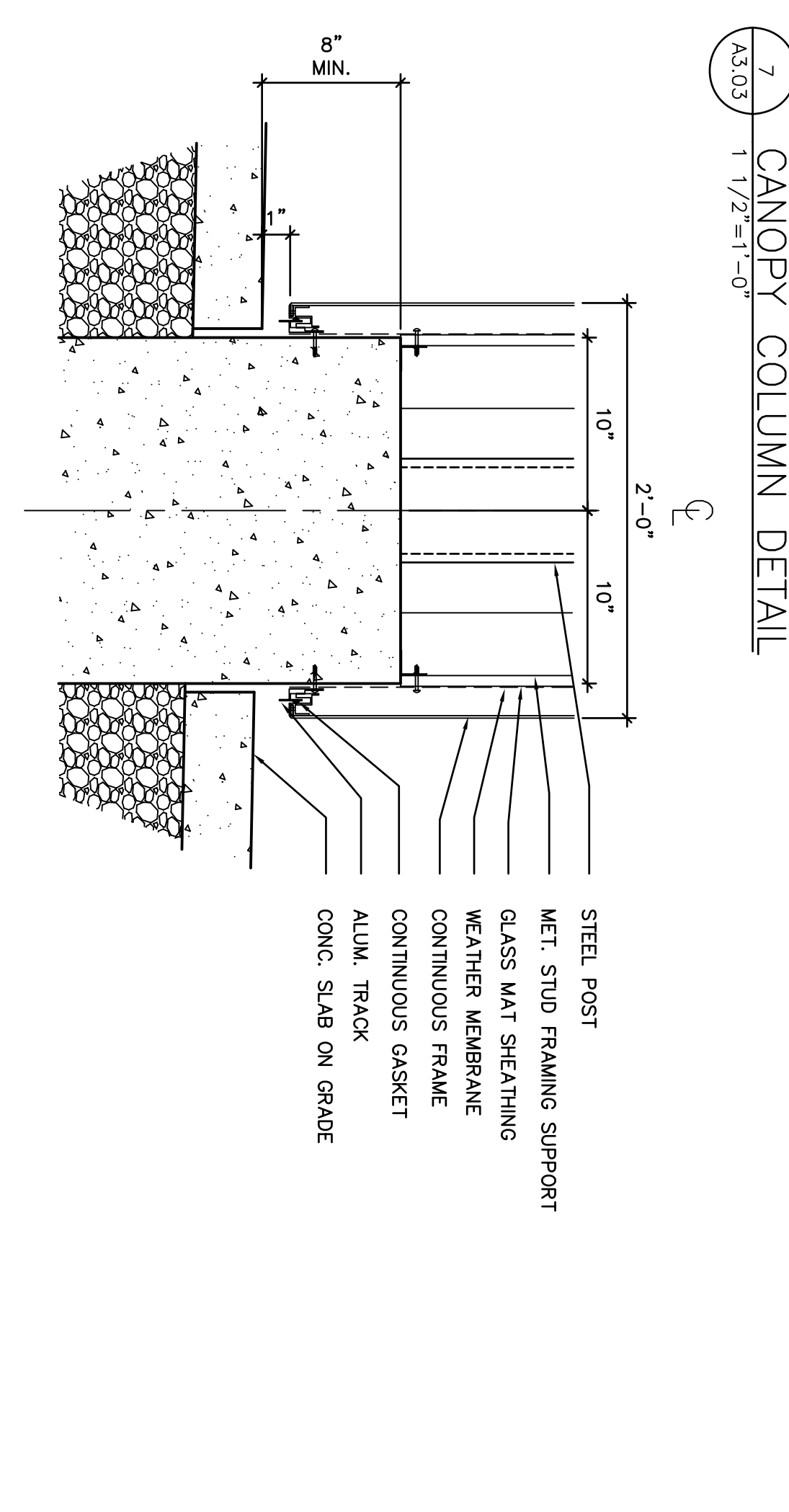
STRUCTURAL SLAB
CONTINUOUS ANGLE OR BENT PLATE
5/8" GYPSUM
UNFACED BATT INSULATION
FIRE AND SMOKE SEAL
SAFFING INSULATION
SAFFING CLIP
4" BRICK VENEER
GLASS MAT SHEATHING
L 5KX3/8 CONTINUOUS LINTEL TIGHTEN TO 60 FT. LBS. TORQUE
FULL HEAD WEPS AT 24" O.C. WITH INSERTS
3/8" STEEL "I" PLATE TYP. (PAINTED)
PROVED FLASHING AS REQUIRED
SEALANT AND BACKER ROD
BRICK VENEER BEYOND
1/4" GYPSUM
UNFACED BATT INSULATION
GLASS MAT SHEATHING



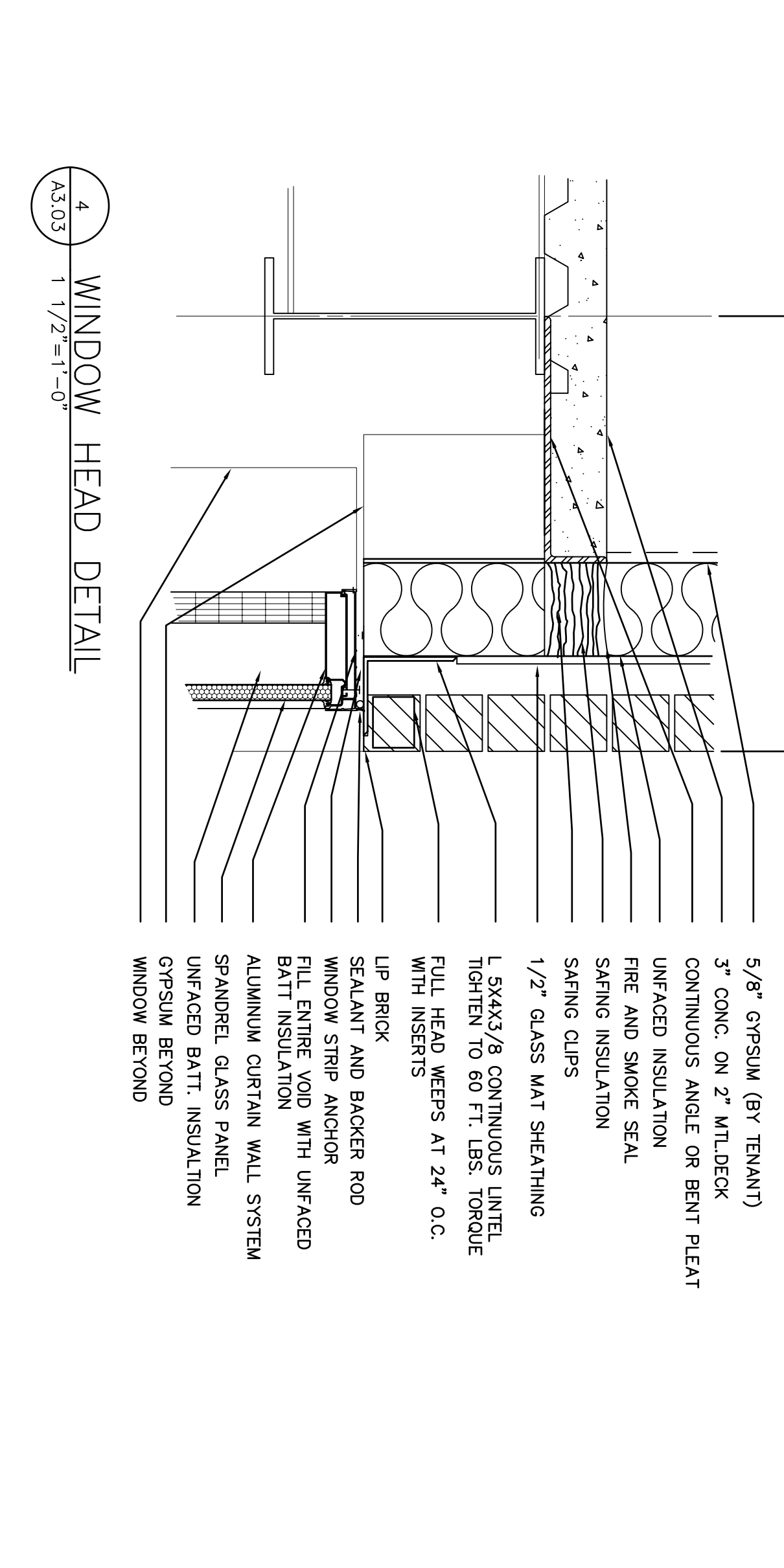
STRUCTURAL SLAB
CONTINUOUS ANGLE OR BENT PLATE
FIRE AND SMOKE SEAL & SAFFING
INSULATION WITH SAFFING CLIPS
SPANDREL GLASS PANEL
INSULATION
SUPERSED ERS
STEEL POST
SHEATHING
WEATHER MEMBRANE
CLIP AS REQUIRED
CONTINUOUS FRAME
TOP PANEL EXTRUSION WITH FLASHING HOOK
SEALANT
MTL COLUMN COVER
MTL STUD FRAMING SUPPORT



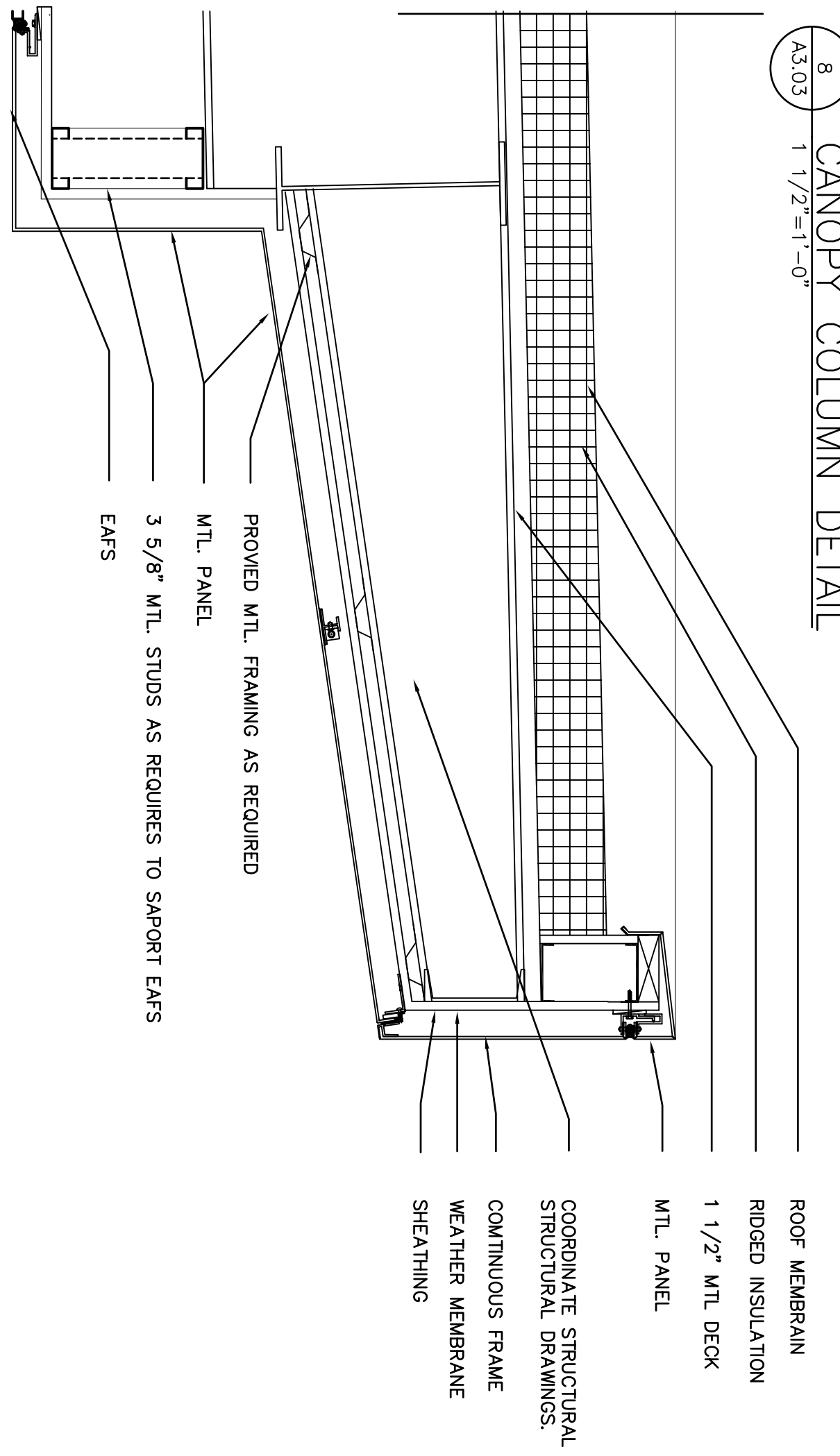
STRUCTURAL SLAB
CONTINUOUS ANGLE OR BENT PLATE
FIRE AND SMOKE SEAL & SAFFING
INSULATION WITH SAFFING CLIPS
ALUMINUM CURTAIN WALL SYSTEM
SPANDREL GLASS PANEL
ROOFED INSULATION
EDGE OF BRICK BEYOND



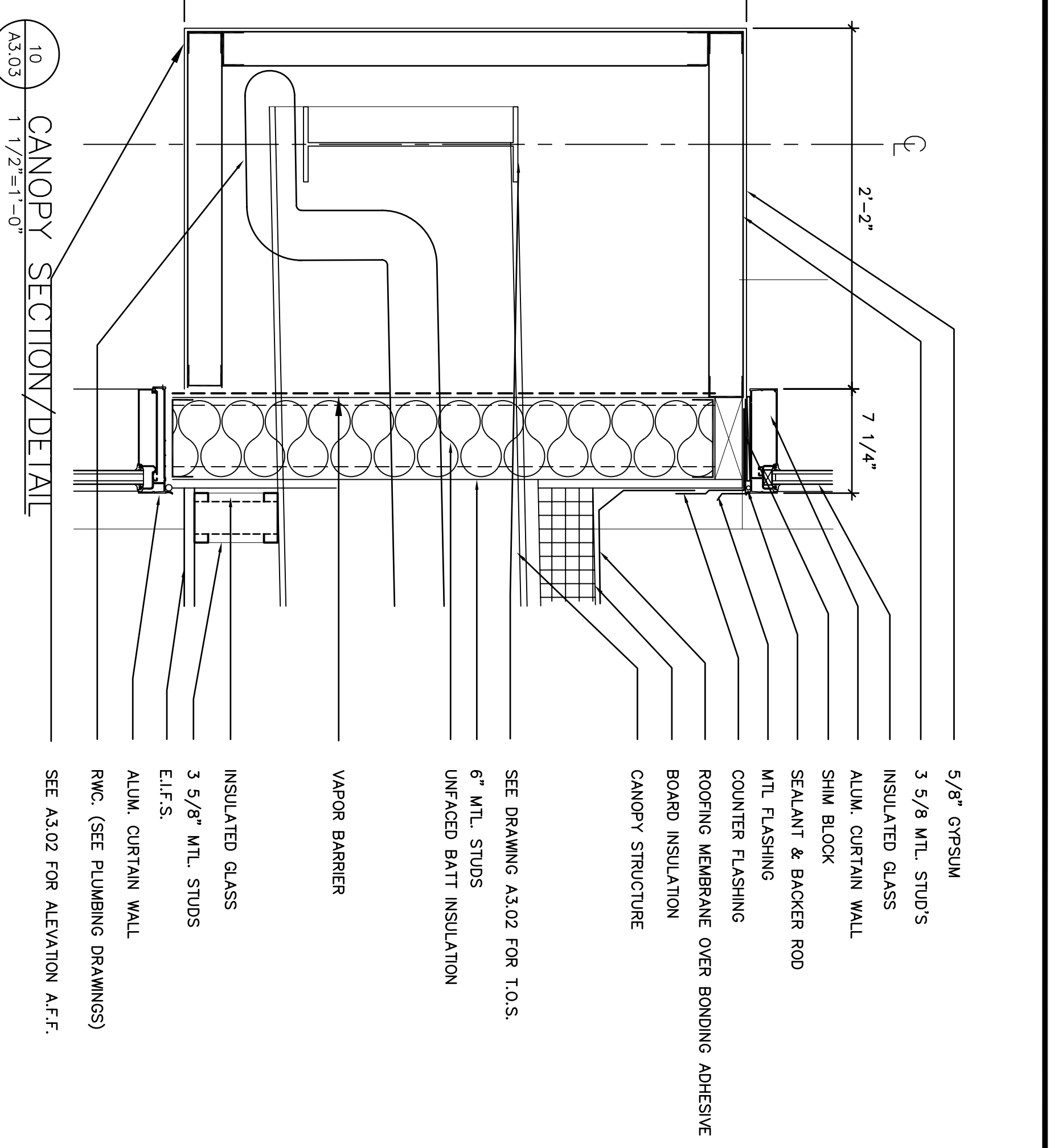
STEEL POST
MET STUD FRAMING SUPPORT
GLASS MAT SHEATHING
WEATHER MEMBRANE
CONTINUOUS FRAME
CONTINUOUS GASKET
ALUM. TRACK
CONC. SLAB ON GRADE



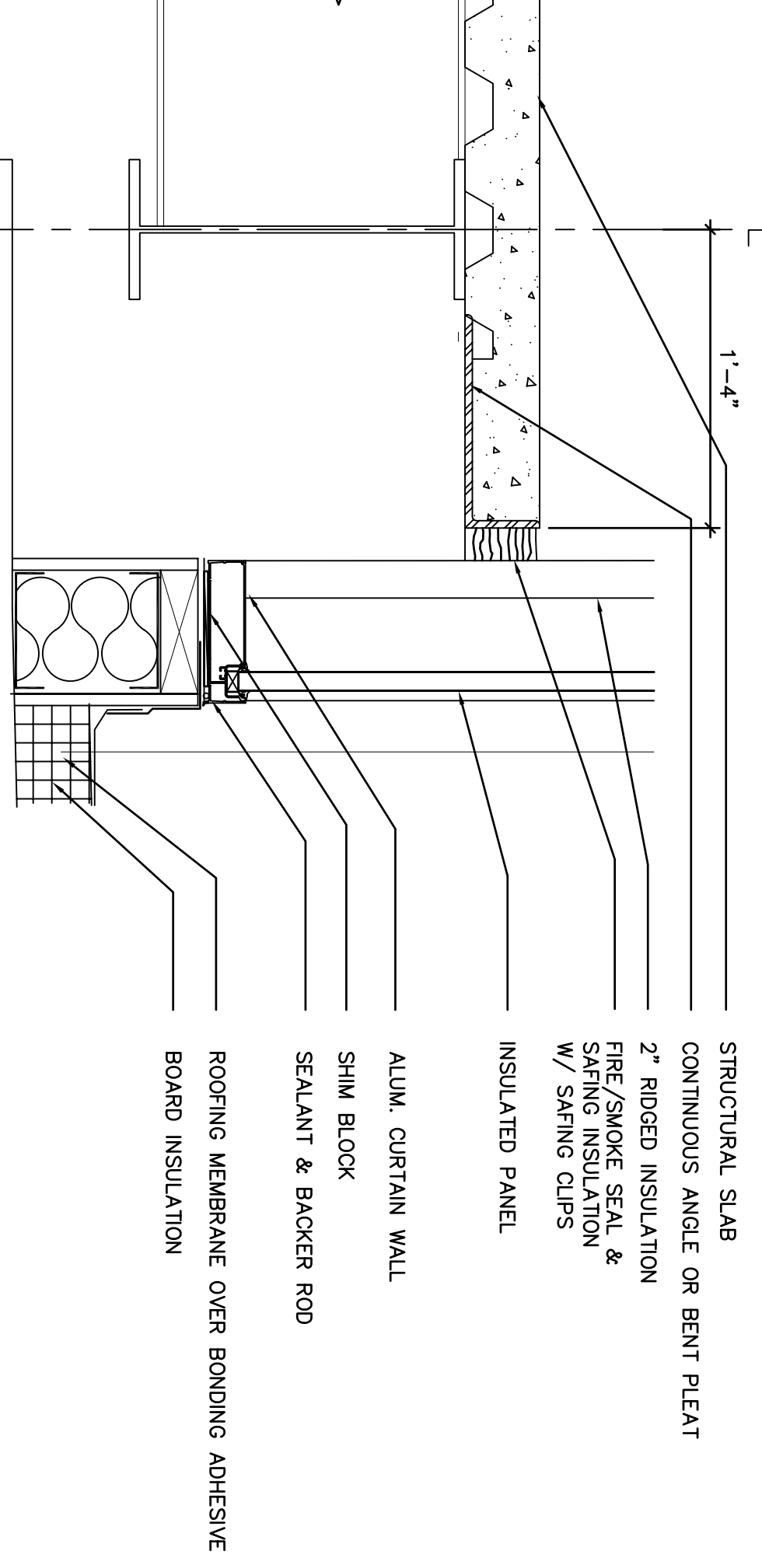
5/8" GYPSUM (BY TYPANT)
3" CONC. ON 2" MTL DECK
CONTINUOUS ANGLE OR BENT PLATE
UNFACED INSULATION
FIRE AND SMOKE SEAL
SAFFING INSULATION
SAFFING CLIPS
1 1/2" GLASS MAT SHEATHING
L 5KX3/8 CONTINUOUS LINTEL
TIGHTEN TO 60 FT. LBS. TORQUE
FULL HEAD WEPS AT 24" O.C.
WITH INSERTS
LP BRICK
SEALANT AND BACKER ROD
SPANDREL GLASS PANEL
ALUMINUM CURTAIN WALL SYSTEM
UNFACED BATT INSULATION
GYPSUM BEYOND
WINDOW BEYOND



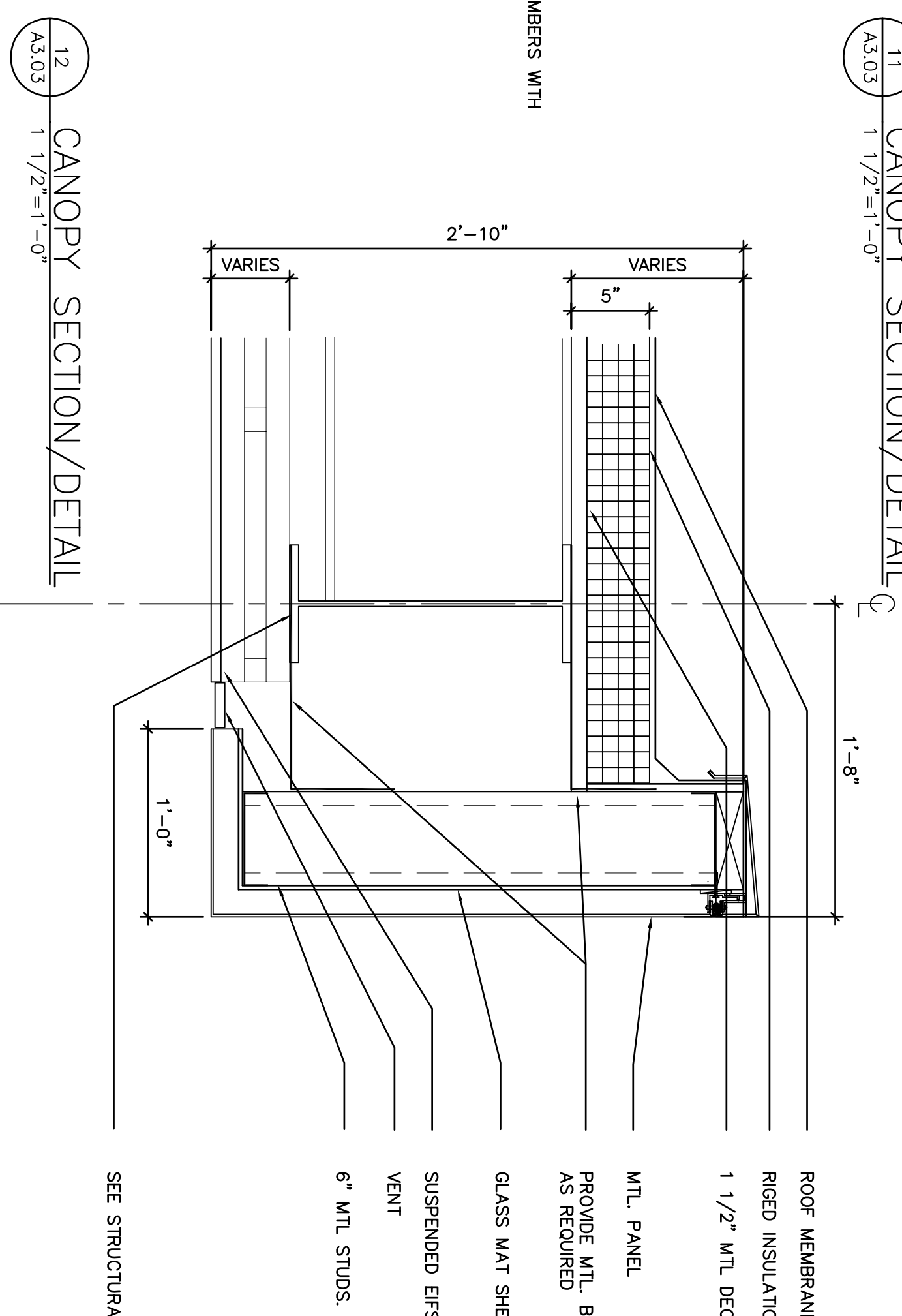
ROOF MEMBRANE
ROOFED INSULATION
1 1/2" MTL DECK
MTL PANEL
COORDINATE STRUCTURAL MEMBERS WITH
CONTINUOUS FRAME
WEATHER MEMBRANE
SHEATHING



5/8" GYPSUM
3 5/8" MTL STUDS
INSULATED GLASS
ALUM. CURTAIN WALL
SHIM BLOCK
SEALANT & BACKER ROD
MTL FLASHING
COUNTER FLASHING
ROOFING MEMBRANE OVER BONDING ADHESIVE
BOARD INSULATION
CANOPY STRUCTURE
VAPOR BARRIER
SEE DRAWING A3.02 FOR T.O.S.
6" MTL STUDS
UNFACED BATT INSULATION
INSULATED GLASS
3 5/8" MTL STUDS
E.L.F.S.
ALUM. CURTAIN WALL
R.M.C. (SEE FLUING DRAWINGS)
SEE A3.02 FOR ALEVATION A.F.F.



STRUCTURAL SLAB
CONTINUOUS ANGLE OR BENT PLATE
2" ROOFED INSULATION
FIRE AND SMOKE SEAL &
SAFFING INSULATION
W/ SAFFING CLIPS
INSULATED PANEL
ALUM. CURTAIN WALL
SHIM BLOCK
SEALANT & BACKER ROD
ROOFING MEMBRANE OVER BONDING ADHESIVE
BOARD INSULATION
SEE DRAWING A3.02 FOR T.O.S.



ROOF MEMBRANE
ROOFED INSULATION
1 1/2" MTL DECK
MTL PANEL
PROVIDE MTL BRACING
AS REQUIRED
GLASS MAT SHEATHING
SUSPENDED ERS
VENT
6" MTL STUDS
SEE STRUCTURAL DRAWINGS.