

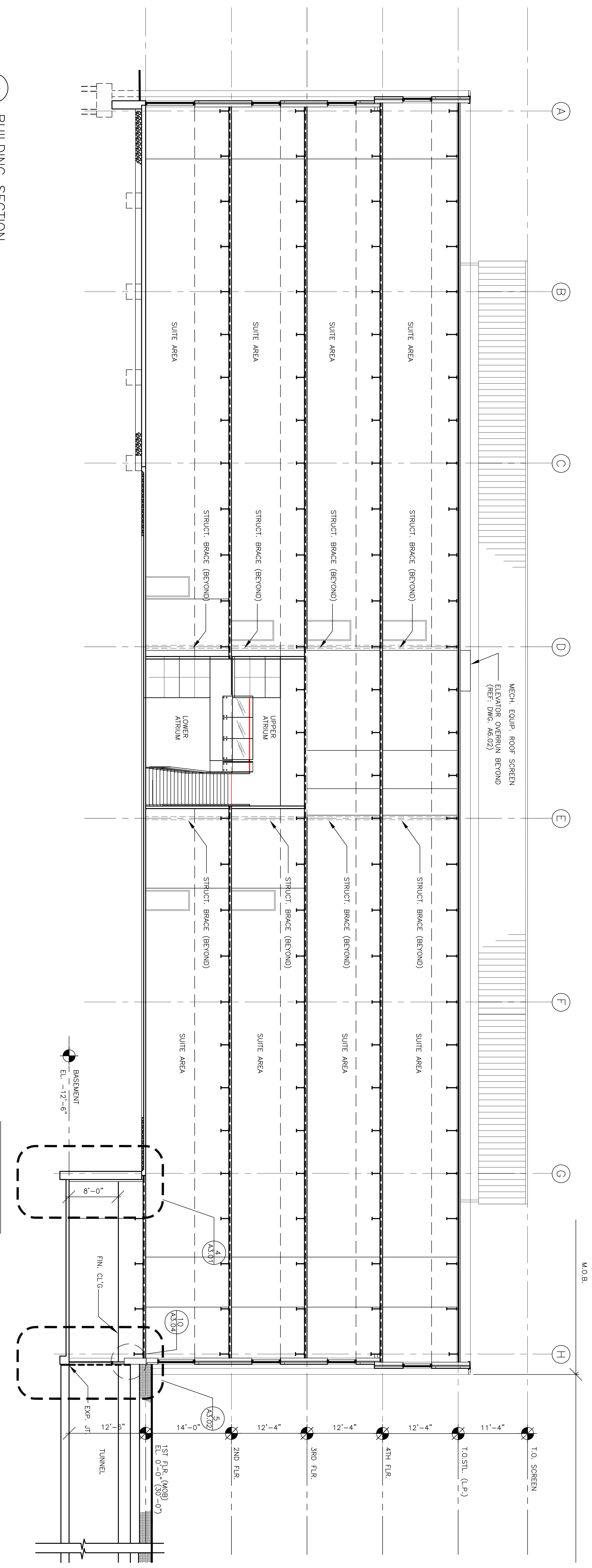
**Francis  
Caufman  
Foley  
Hoffmann**

Francis Caufman  
2120 Arch Street  
Portland, ME 04103  
Architects Ltd.  
215-588-8250

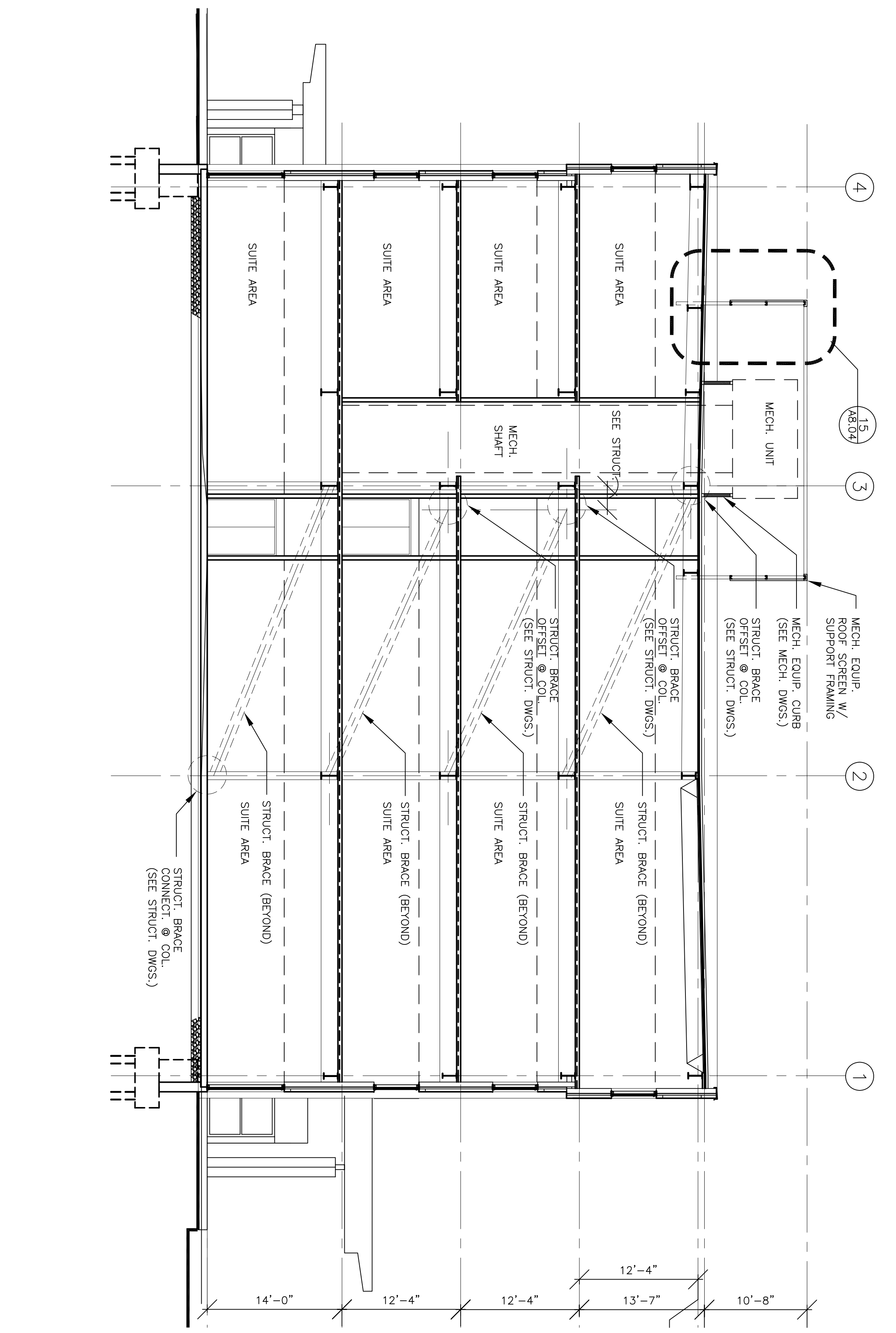
**STRUCTURAL ENGINEER**  
HOFFMANN ENGINEERS ASSOCIATES  
119 COLLEGE AVENUE  
SUITE 175  
PORTLAND, ME 04103  
P (603) 645-8570  
F (603) 645-8572

**M/E/P ENGINEER**  
HOFFMANN ENGINEERS ASSOCIATES  
119 COLLEGE AVENUE, SUITE 1400  
PHILADELPHIA, PA 19102  
P 215-252-2106  
F 215-252-2106

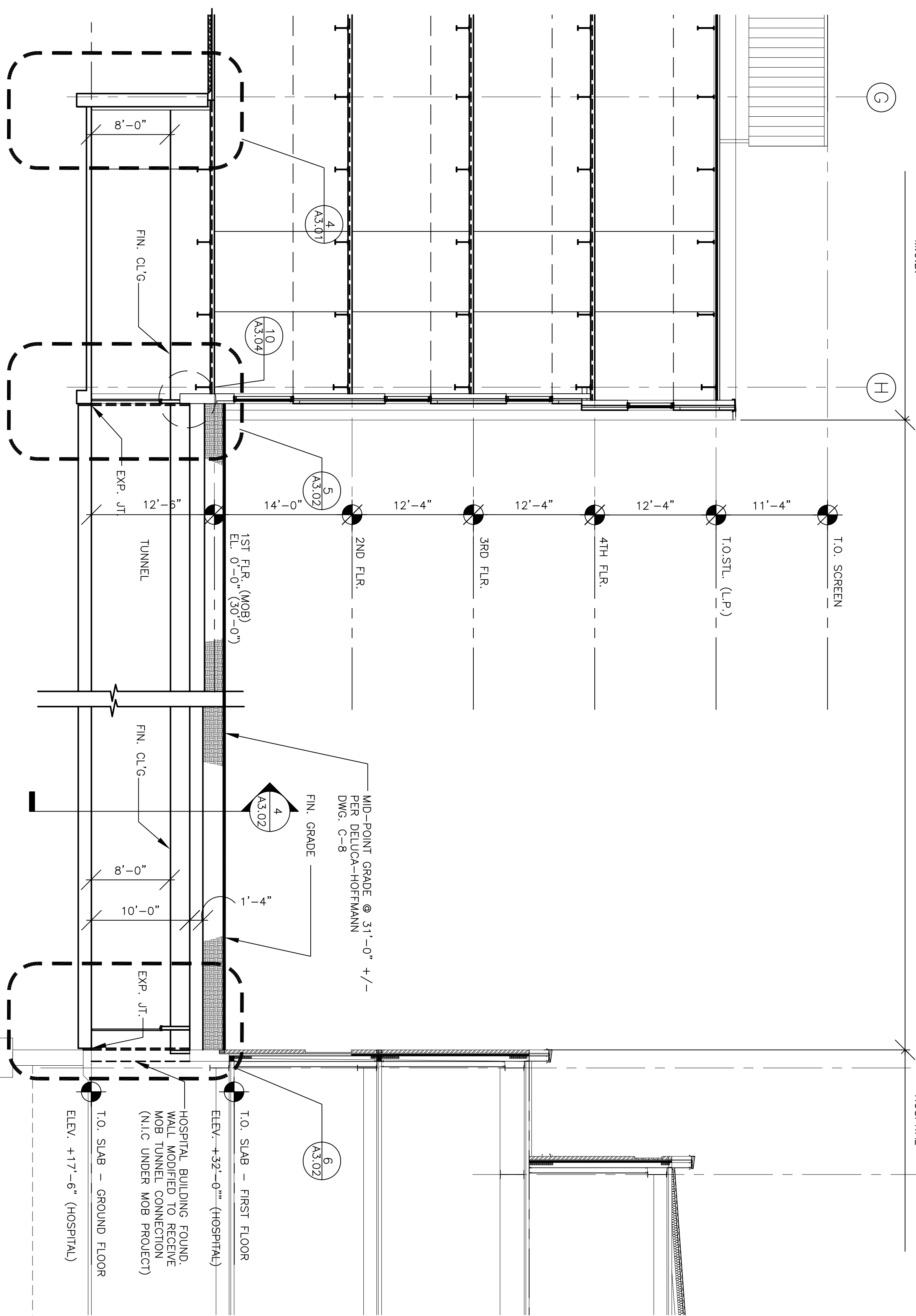
Revisions  
11-20-06  
CONSTRUCTION DOCUMENTS ISSUED



1 BUILDING SECTION  
A3.00  
1/8"=1'-0"



2 BUILDING SECTION  
A3.00  
1/8"=1'-0"



3 TUNNEL SECTION  
A3.00  
1/8"=1'-0"

Sheet  
BUILDING SECTIONS

Project Title  
Landmark Healthcare  
Facilities LLC  
Fore River Medical  
Pavilion  
Portland, Maine

Date  
NOVEMBER 20, 2006  
Project Number  
F06-5103

Drawing Number  
A3.00