

**LANDMARK  
HEALTHCARE  
FACILITIES, LLC**

830 North Jefferson Street  
 Milford, MA 01860  
 Telephone: (414) 277-4500  
 Facsimile: (414) 277-1055

**Francis**  
**Caufman**  
**Foley**  
**Hoffmann**

Francis Cauffman  
 2120 Arch Street  
 Philadelphia, PA 19103  
 Architects Ltd.  
 215-588-8250

**STRUCTURAL ENGINEER**  
**ROBERT M. HOFFMANN ASSOCIATES**  
 SUITE 175  
 109 COLLEGE AVENUE  
 PHILADELPHIA, PA 19103  
 P (610) 645-4570  
 F (610) 645-9572

**M/E/P ENGINEER**  
**CONSTRUCTION SERVICES**  
 1400 MARKET STREET, SUITE 1400  
 PHILADELPHIA, PA 19102  
 P 215-252-2106  
 F 215-252-2106

Revisions  
 11-20-06 CONSTRUCTION DOCUMENTS ISSUED

Sheet  
 ENLARGED ELEVATIONS

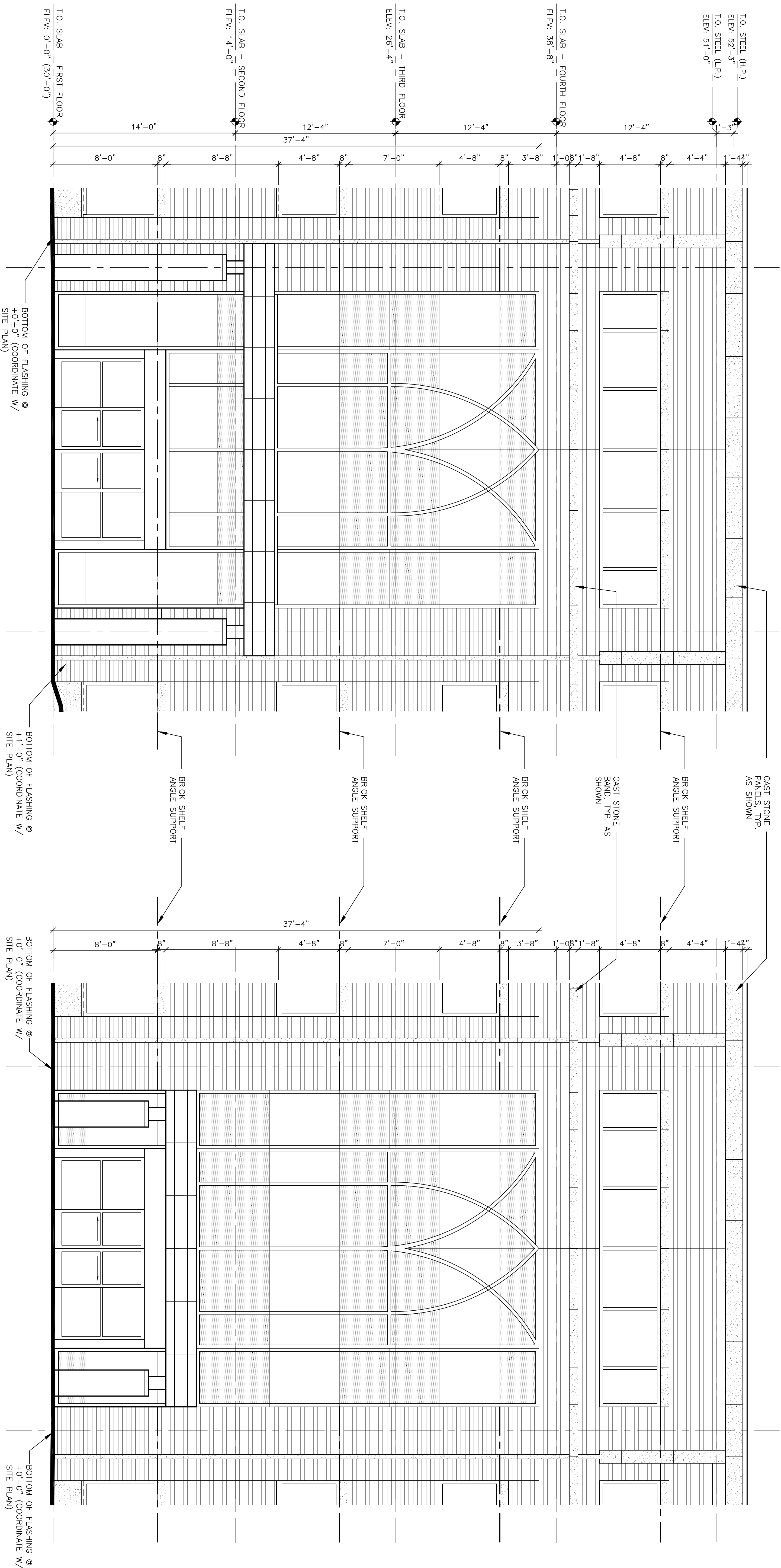
Project Title  
 Landmark Healthcare  
 Facilities LLC  
 Fore River Medical  
 Pavilion  
 Portland, Maine

Date  
 NOVEMBER 20, 2006

Project Number  
 F06-5103

Drawing Number

A2.03



1 ENLARGED ELEVATION  
 1/4"=1'-0"  
 A2.03

2 ENLARGED ELEVATION  
 1/4"=1'-0"  
 A2.03