

**Francis**  
**Cauffman**  
**Foley**

**Hoffmann**

Francis Cauffman 2120 Arch Street  
 Portland, ME 04103  
 Architects Ltd. 215-588-8250

**STRUCTURAL ENGINEER**  
**FRANCIS CAUFFMAN & ASSOCIATES**  
 SUITE 175  
 119 COLLEGE AVENUE  
 PORTLAND, ME 04103  
 P (603) 644-8570  
 F (610) 645-9572

**M/E/P ENGINEER**  
**FRANCIS CAUFFMAN & ASSOCIATES**  
 1400 MARKET STREET, SUITE 1400  
 PHILADELPHIA, PA 19102  
 P 215-252-2106  
 F 215-252-2106

Revisions  
 11-20-06 CONSTRUCTION DOCUMENTS ISSUED

Sheet  
 ENLARGED ELEVATIONS

Project Title

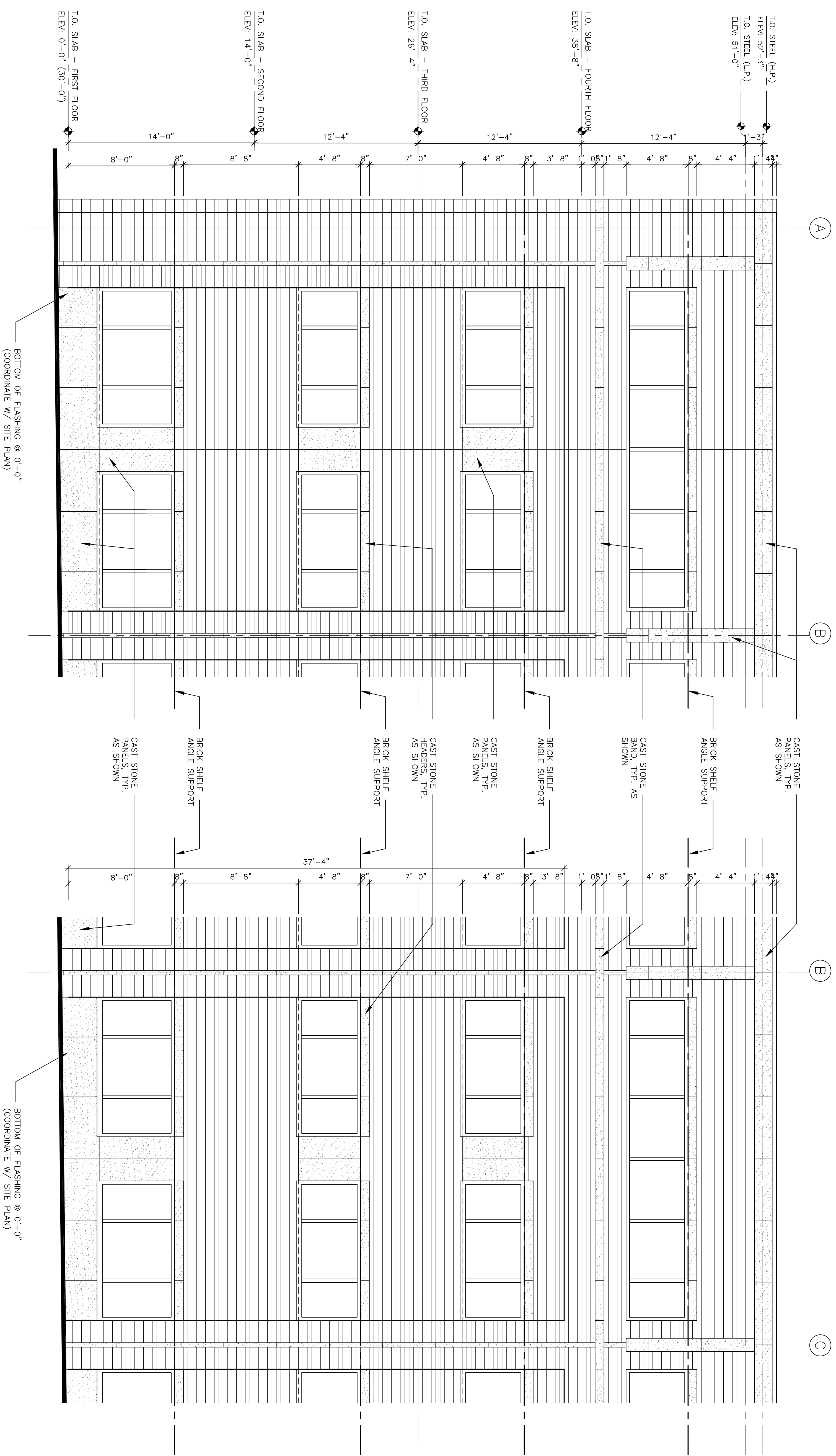
Landmark Healthcare  
 Facilities LLC  
 Fore River Medical  
 Pavilion  
 Portland, Maine

Date  
 NOVEMBER 20, 2006

Project Number  
 F06-5103

Drawing Number

A2.02



1 ENLARGED ELEVATION  
 1/4"=1'-0"

2 ENLARGED ELEVATION  
 1/4"=1'-0"