

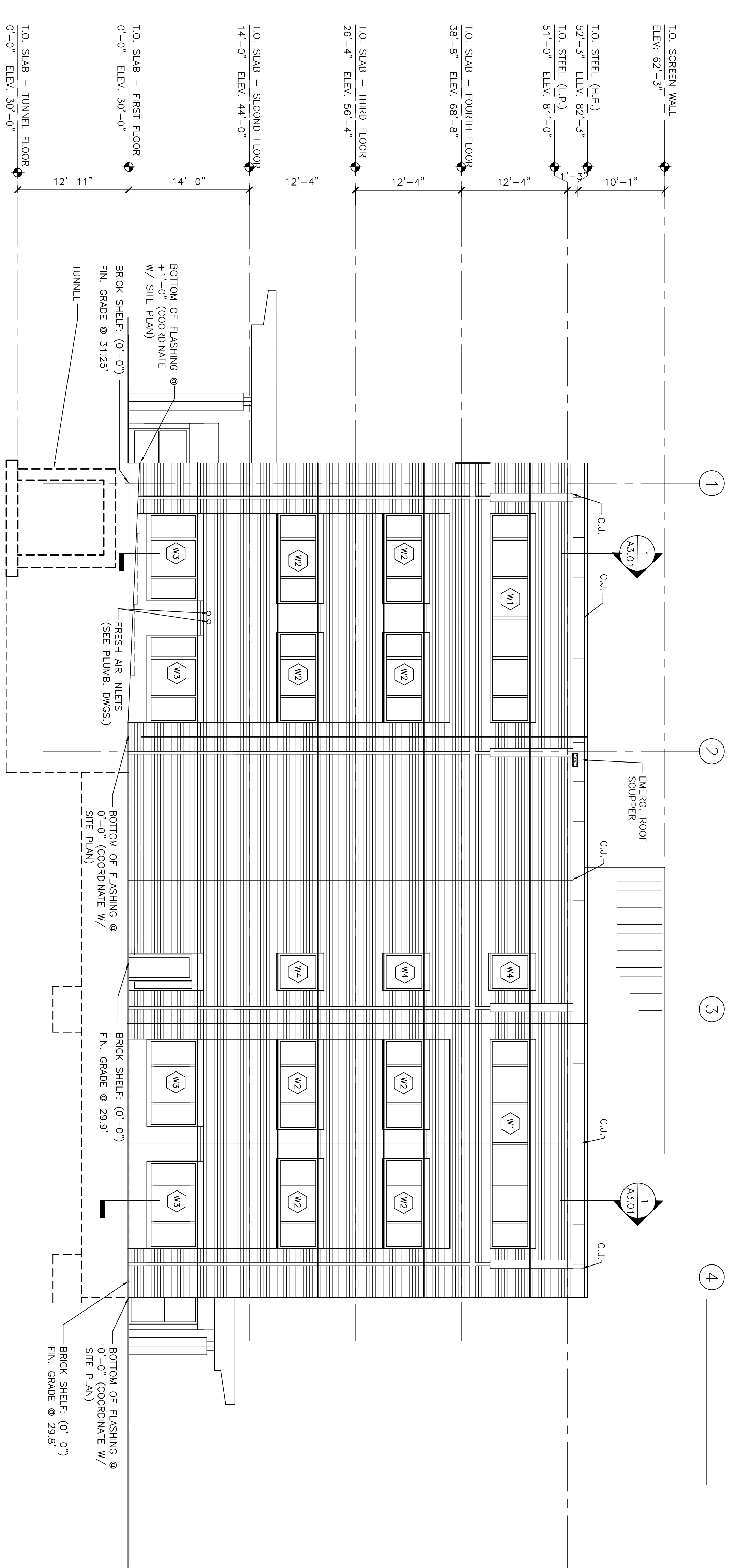
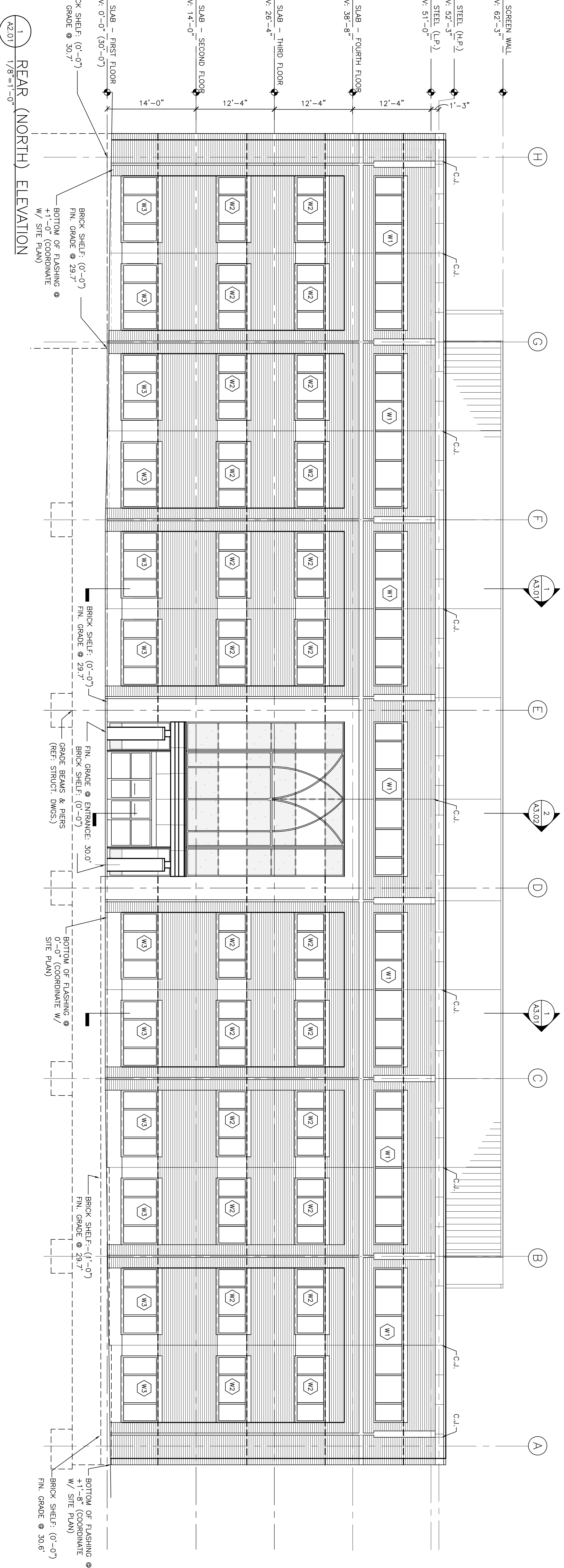
Francis
Cauffman
Foley
Hoffmann

2120 Arch Street
 Philadelphia, PA 19103
 Telephone: 215-588-8250
 Architects Ltd.

STRUCTURAL ENGINEERS
178 COLLEGE AVENUE ASSOCIATES
 SUITE 175
 PHILADELPHIA, PA 19103
 P (610) 644-8570
 F (610) 644-8572

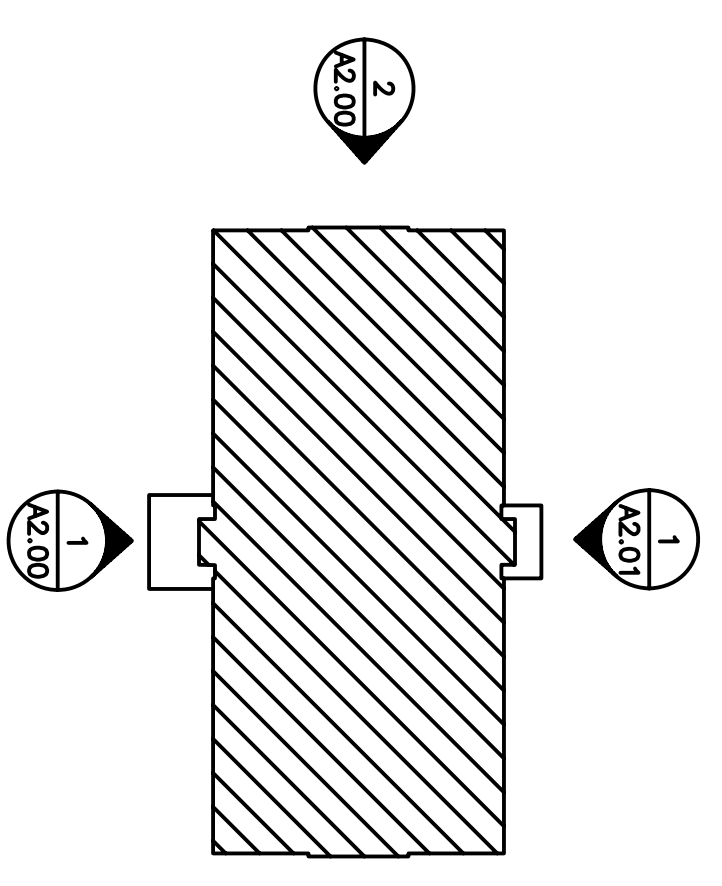
M/E/P ENGINEER
1500 MARKET STREET, SUITE 1400
 PHILADELPHIA, PA 19102
 P 215-252-2106
 F 215-252-2106

Revisions
 11-20-06 CONSTRUCTION DOCUMENTS ISSUED



GENERAL ELEVATION NOTES

1. CAST STONE PANELS ARE A MAX. OF 4'-0" LONG, TYP.
2. PROVIDE 5/8" JOINT TYP. UNLESS NOTED OTHERWISE.
3. FIRST FLOOR TOP OF SLAB IS REFERENCE AT ELEVATION 0'-0" RIGID FLOOR PLAN REFERENCE @ 30'-0". ALL OTHER ELEVATIONS ARE REFERENCED (AS NOTED) FROM THIS BASE ELEVATION OF 0'-0".
4. ALL FINISH GRADE ELEVATIONS, REFERENCED ON THIS DRAWING, ARE BASED ON DELUDA-HOFFMANN'S SITE DRAWINGS.



Project Title
Landmark Healthcare Facilities LLC
Fore River Medical Pavilion
 Portland, Maine