

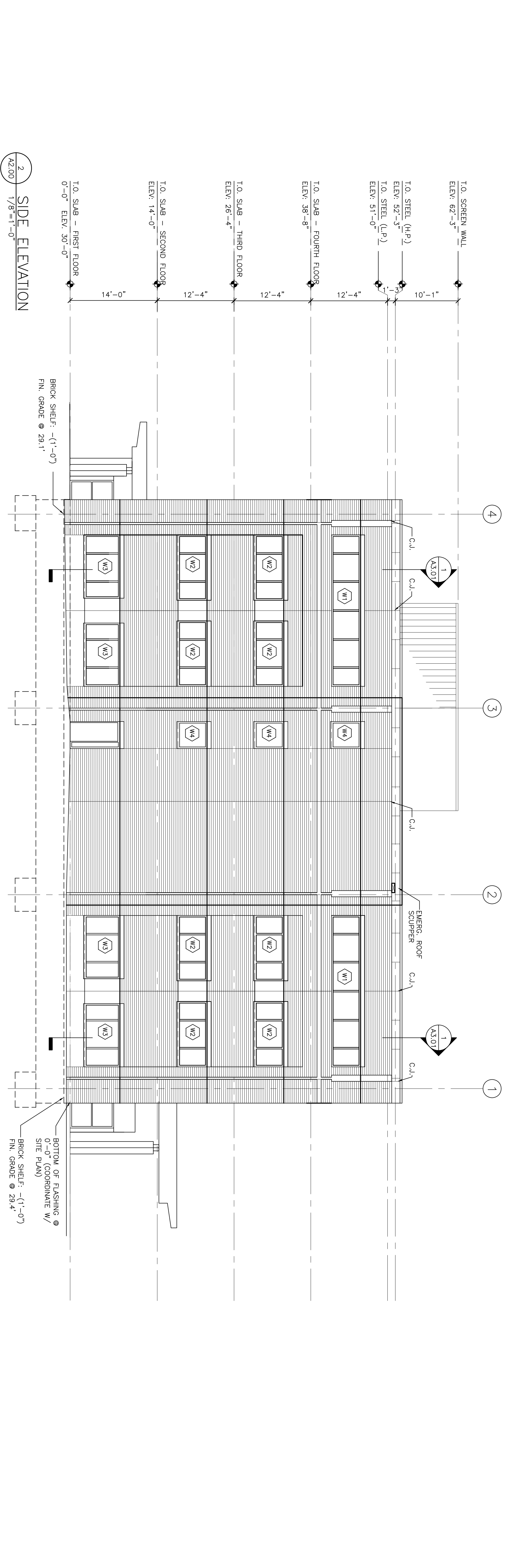
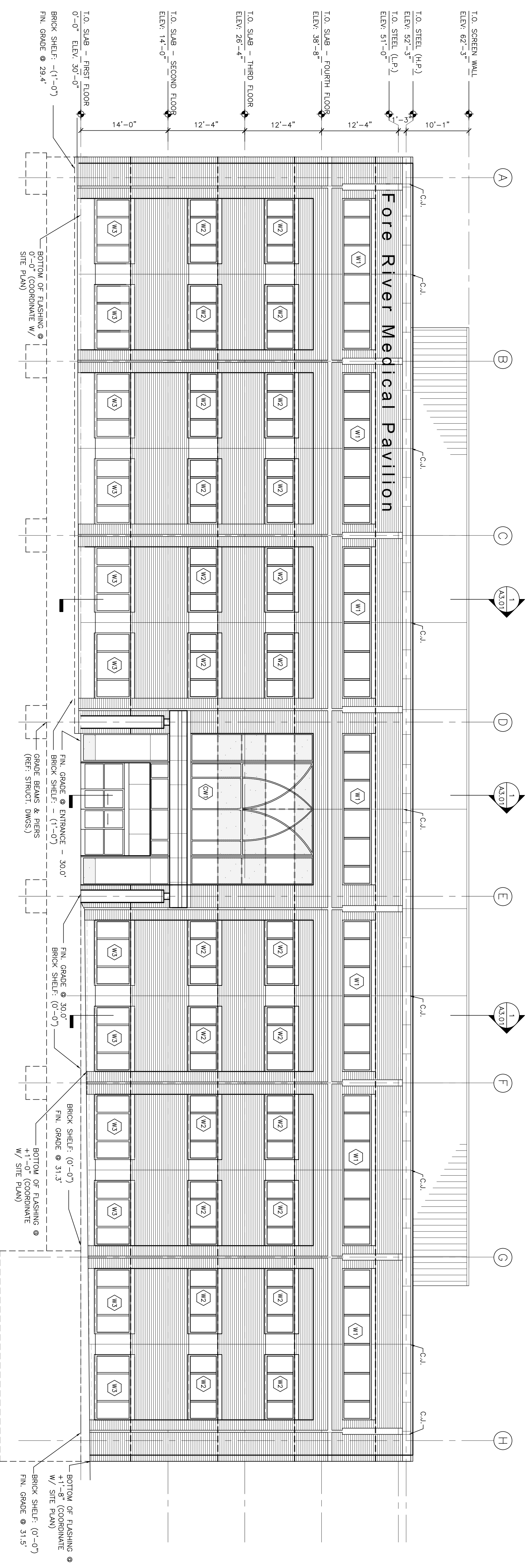
Francis
Cauffman
Foley
Hoffmann

Francis Cauffman
 2120 Arch Street
 Philadelphia, PA 19103
 Telephone: 215-588-8250
 Architects Ltd.

STRUCTURAL ENGINEERS
PHILIP J. HOFFMANN ASSOCIATES
 SUITE 175
 198 COLLEGE AVENUE
 PHILADELPHIA, PA 19103
 P (610) 644-8572
 F (610) 644-8572

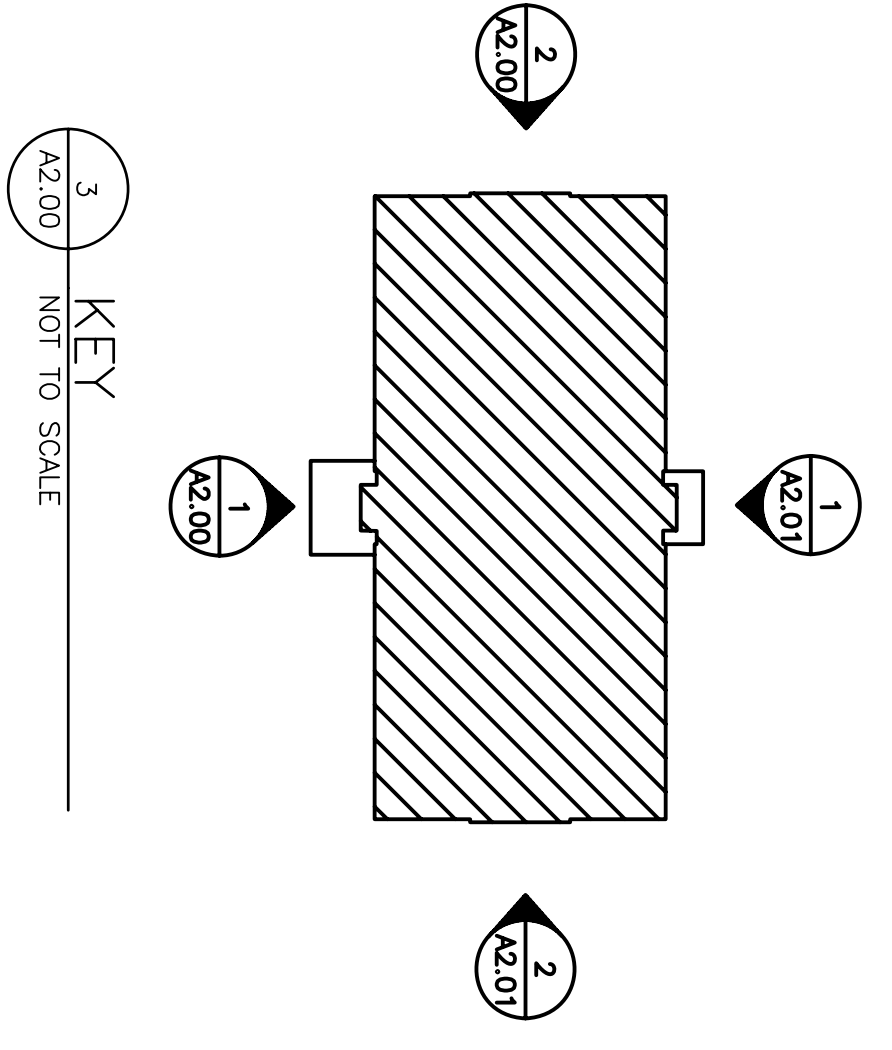
M/E/P ENGINEER
DELUDA-HOFFMANN
 1500 WALNUT STREET, SUITE 1400
 PHILADELPHIA, PA 19102
 P 215-522-2106
 F 215-522-2106

Revisions
 11-20-06 CONSTRUCTION DOCUMENTS ISSUED



GENERAL ELEVATION NOTES

1. CAST STONE PANELS ARE A MAX. OF 4'-0" LONG, TYP.
2. PROVIDE 5/8" JOINT TYP. UNLESS NOTED OTHERWISE.
3. FIRST FLOOR TOP OF SLAB IS REFERENCE AT ELEVATION 0'-0" RIGID FLOOR PLAN REFERENCE @ 30'-0". ALL OTHER ELEVATIONS ARE REFERENCED (ABOVE OR BELOW) FROM THIS BASE ELEVATION OF 0'-0".
4. ALL FINISH GRADE ELEVATIONS, REFERENCED ON THIS DRAWING, ARE BASED ON DELUDA-HOFFMANN'S SITE DRAWINGS.



Sheet
BUILDING ELEVATIONS

Project Title
**Landmark Healthcare
 Pavilion
 Portland, Maine**

Date
NOVEMBER 20, 2006

Project Number
F06-5103

Drawing Number
A2.00