

LANDMARK HEALTHCARE FACILITIES, LLC
 830 North Jefferson Street
 Portland, ME 04103
 Telephone: (414) 277-4500
 Facsimile: (414) 277-1055

**Francis
 Cauffman
 Foley**

Hoffmann
 Francis Cauffman 2120 Arch Street
 Philadelphia, PA 19103
 Architects Ltd. 215-588-8250

**STRUCTURAL ENGINEERS
 RINGOLD ENGINEERS ASSOCIATES**
 SUITE 175
 178 COLLIER AVENUE
 PHILADELPHIA, PA 19103
 P (610) 644-8570
 F (610) 644-8572

**M/E/P ENGINEER
 RINGOLD ENGINEERS ASSOCIATES**
 1400 MARKET STREET, SUITE 1400
 PHILADELPHIA, PA 19102
 P 215-252-2106
 F 215-252-2106

Revisions
 11-20-06 CONSTRUCTION DOCUMENTS ISSUED

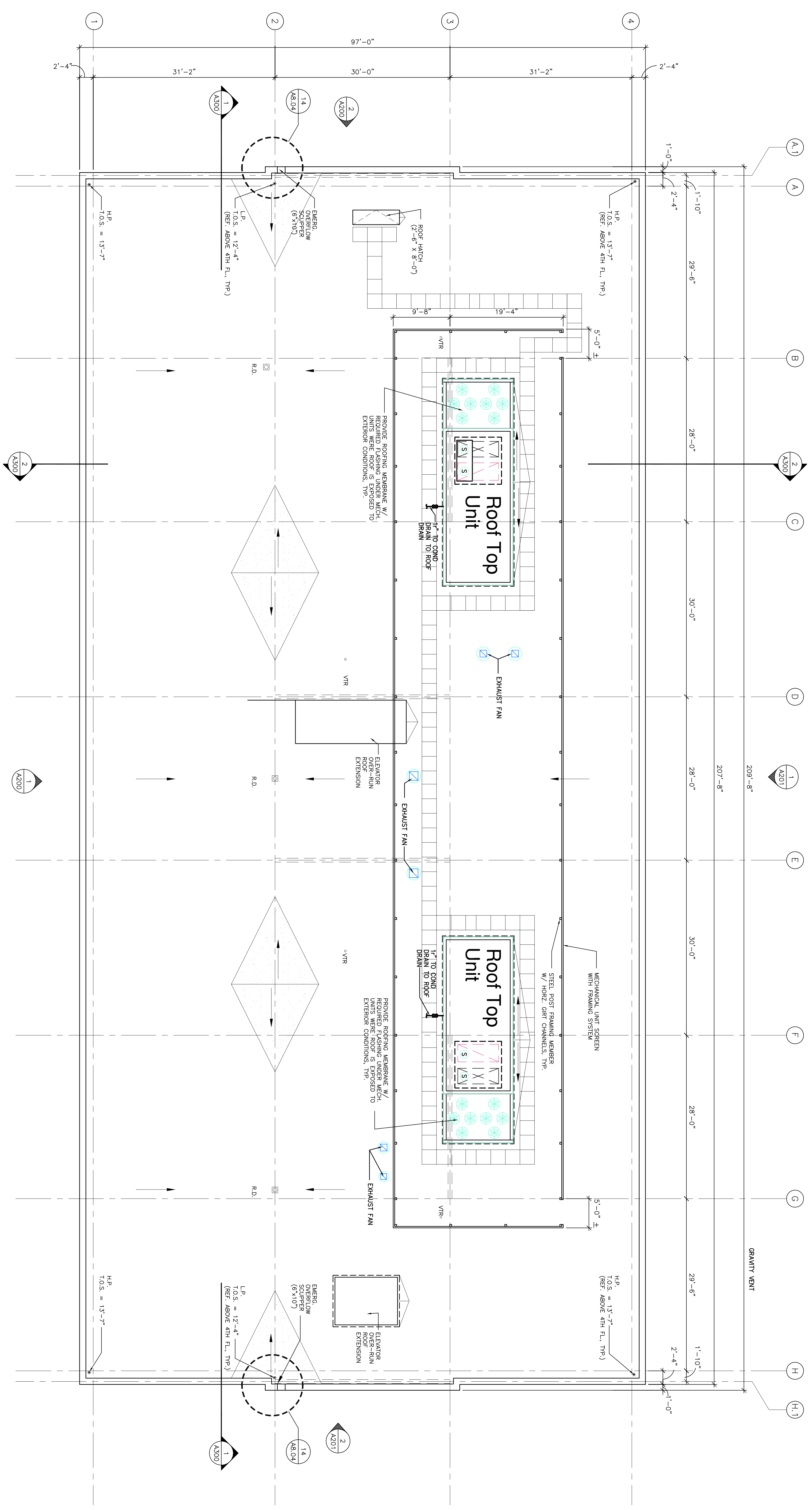
Sheet
 ROOF CONSTRUCTION PLAN

Project Title
**Landmark Healthcare
 Facilities LLC**
 Fore River Medical
 Pavilion
 Portland, Maine

Date
NOVEMBER 20, 2006

Project Number
F06-5103

Drawing Number
A1.05



1 ROOF CONSTRUCTION PLAN
 1/8"=1'-0" N