

Francis

Cauffman

Foley

Hoffmann

Francis Cauffman 2120 Arch Street
Portland, ME 04103
Architects Ltd. 215-588-8250

STRUCTURAL ENGINEERS
FRANCIS CAUFFMAN ARCHITECTS ASSOCIATES
SUITE 175
109 COLLEGE AVENUE
PORTLAND, ME 04103
P (603) 644-8570
F (610) 645-9572

M/E/P ENGINEER
MORRIS ENGINEERS
1400 MARKET STREET, SUITE 1400
PHILADELPHIA, PA 19102
P 215-252-2106
F 215-252-2106

Revisions
11-20-06
CONSTRUCTION DOCUMENTS ISSUED

Sheet
SECOND FLOOR CONSTRUCTION
PLAN

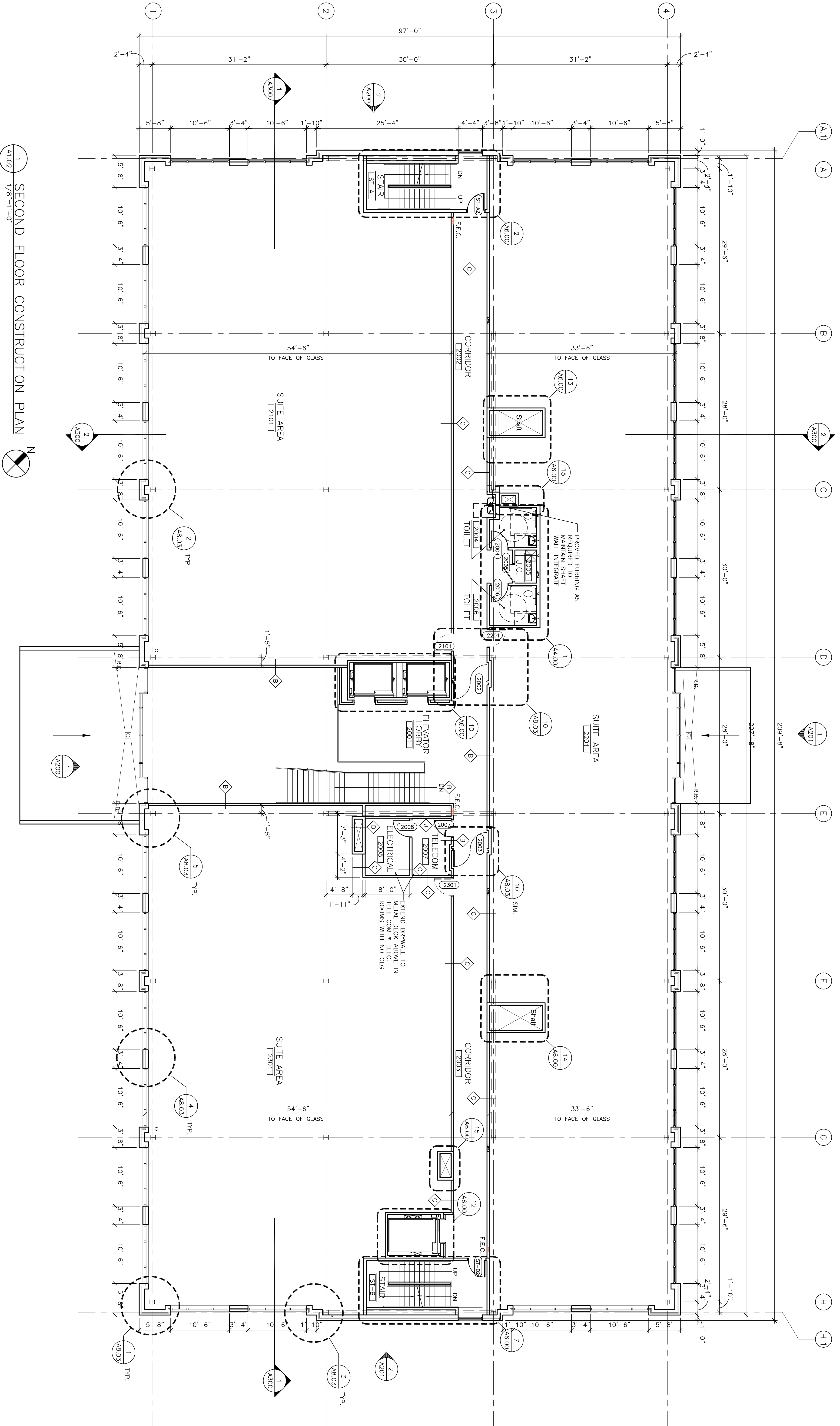
Project Title
Landmark Healthcare
Facilities LLC
Fore River Medical
Pavilion
Portland, Maine

Date
NOVEMBER 20, 2006

Project Number
F06-5103

Drawing Number

A1.02



1 SECOND FLOOR CONSTRUCTION PLAN
A1.02 1/8"=1'-0"