

Francis

Caufman

Foley

Hoffmann

2120 Arch Street
Philadelphia, PA 19103

Francis Caufman
Foley Hoffmann
Architects, Inc.

215-598-5550

215-598-5550

215-598-5550

215-598-5550

215-598-5550

215-598-5550

215-598-5550

215-598-5550

215-598-5550

215-598-5550

215-598-5550

215-598-5550

215-598-5550

215-598-5550

215-598-5550

215-598-5550

215-598-5550

215-598-5550

215-598-5550

215-598-5550

215-598-5550

215-598-5550

215-598-5550

215-598-5550

215-598-5550

215-598-5550

215-598-5550

215-598-5550

215-598-5550

215-598-5550

215-598-5550

215-598-5550

215-598-5550

215-598-5550

215-598-5550

215-598-5550

215-598-5550

215-598-5550

215-598-5550

215-598-5550

215-598-5550

215-598-5550

215-598-5550

215-598-5550

215-598-5550

215-598-5550

215-598-5550

215-598-5550

215-598-5550

215-598-5550

215-598-5550

215-598-5550

215-598-5550

215-598-5550

215-598-5550

215-598-5550

215-598-5550

215-598-5550

215-598-5550

215-598-5550

215-598-5550

215-598-5550

215-598-5550

215-598-5550

215-598-5550

215-598-5550

215-598-5550

215-598-5550

215-598-5550

215-598-5550

215-598-5550

215-598-5550

CODE ANALYSIS DATA

BUILDING CODE: INTERNATIONAL BUILDING CODE 2003
 ELECTRICAL CODE: NEC/NATIONAL ELECTRICAL CODE 2005
 PLUMBING CODE: STATE OF MAINE PLUMBING CODE (PER AMEN) 2003
 HANDICAP CODE: MAINE ACCESSIBILITY CODE - ICC/ANSI A117.1
 ASHRAE 62-1989 ADOPTED MECHANICAL CODE: 2003
 ENERGY CODE: ASHRAE 90.1 2001 CODE 2003
 OTHER CODE: AS AMENDED BY CITY OF PORTLAND 2003

MEDICAL OFFICE BUILDING DATA

BUILDING SIZE: 79,194 GSF
 NO. STORIES: 4
 IBC 2003-BUILDING CODE
 AREA PER FLOOR - LOWER LEVEL: 18,820 GSF
 SECOND FLOOR: 18,294 GSF
 THIRD FLOOR: 19,574 GSF
 FOURTH FLOOR: 19,820 GSF
 FORTH FLOOR: 20,210 GSF
 BUILDING HEIGHT: 51'-0" FT.
 DIST. TO STREET: 20 FT. (REQUIRED)
 DIST. TO PROPERTY: 10 FT.
 DIST. TO BLDGS. 60FT. (ACTUAL)
 DIST. TO BLDGS. 60FT. (ACTUAL)

HEIGHT AND AREA LIMITATIONS

OCCUPANCY/USE GROUP: BUSINESS
 ALLOWABLE HEIGHT: 55 FT. / 4 STORIES
 ALLOWABLE AREA: 80,200
 ACTUAL HEIGHT: 51'-0"
 ACTUAL AREA: 79,194 GSF
 ACTUAL HEIGHT: 51'-0"
 ACTUAL AREA: 79,194 GSF

FIRE RESISTIVE REQUIREMENTS

ROOF/FLOOR ASSEMBLY: 0HR
 ROOF/CEILING ASSEMBLY: 0HR
 WALLS (W/ONE FLOOR): 0HR
 WALLS (W/TWO FLOORS): 0HR
 FIRE RATED EXTERIOR WALLS/FIRE SEPARATION DISTANCE (PER TABLE 602)

WALL RATING LEGEND

0 HOUR FIRE RATED WALLS
 1 HOUR FIRE SEPARATION WALLS
 2 HOUR FIRE SEPARATION WALLS

1 HOUR FLOORS
 2 HOUR FLOORS, BEAMS OR COLUMNS

UL DESIGN ASSEMBLIES (OR APPROVED EQUAL)

UL U412 2 HOUR STEEL STUD AND Gypsum BOARD WALL ENCLOSURE
 UL U438 2 HOUR STEEL STUD AND Gypsum BOARD WALL ENCLOSURE
 UL U465 1 HOUR STEEL STUD AND Gypsum BOARD WALL ENCLOSURE
 UL U469 1 HOUR STEEL STUD AND Gypsum BOARD WALL ENCLOSURE
 UL D940 1 HOUR METAL DECK AND CONCRETE TOPPING FLOOR
 UL T345 CLASS "B" ROOF COVERING ASSEMBLY
 UL HW-0-0042 BATED DEFLECTION HEAD DETAIL
 UL D940 2 HOUR FLOOR SLAB & BEAM ASSEMBLY
 UL W220 2 HOUR BEAM ASSEMBLY ONLY
 UL W772 1 HOUR AND 2 HOUR "W" COLUMN ASSEMBLIES
 UL W772 1 HOUR AND 2 HOUR "W" COLUMN ASSEMBLIES

GENERAL CODE NOTES:

- CORRIDORS & RAVERS WITH REQUIREMENTS: 44 INCHES (400 OCC)
- STAIR WIDTH REQUIREMENTS: 44 INCHES (400 OCC)
 PROVIDED: 48 INCHES (220 OCC/STAIR)
- BASMENT ELECTRICAL ROOMS: 0 HOUR RATING REQ. PER NEC 2003, ARTICLE C405.155 INSULATED SYSTEM
 PROVIDED: TRANSFORMERS UNDER 112 1/2 KVA AND CAPACITORS 1 - 1000 VAR. PROVIDED: TRANSFORMERS UNDER 112 1/2 AND ARE A CLASS 155 INSULATED AIR-DIELECTRIC PER IBC SECTION 405.
- 2 STORY ATTIC
- FLUVE SPRINKLERED
- SMOKE CONTROL NOT REQUIRED PER EXCEPTION 2
- INTERIOR WALL & CEILING FINISHES W/1 CLASS B
- EXIT ACCESS WITHIN 5' 200 FEET

SEISMIC CONDITIONS

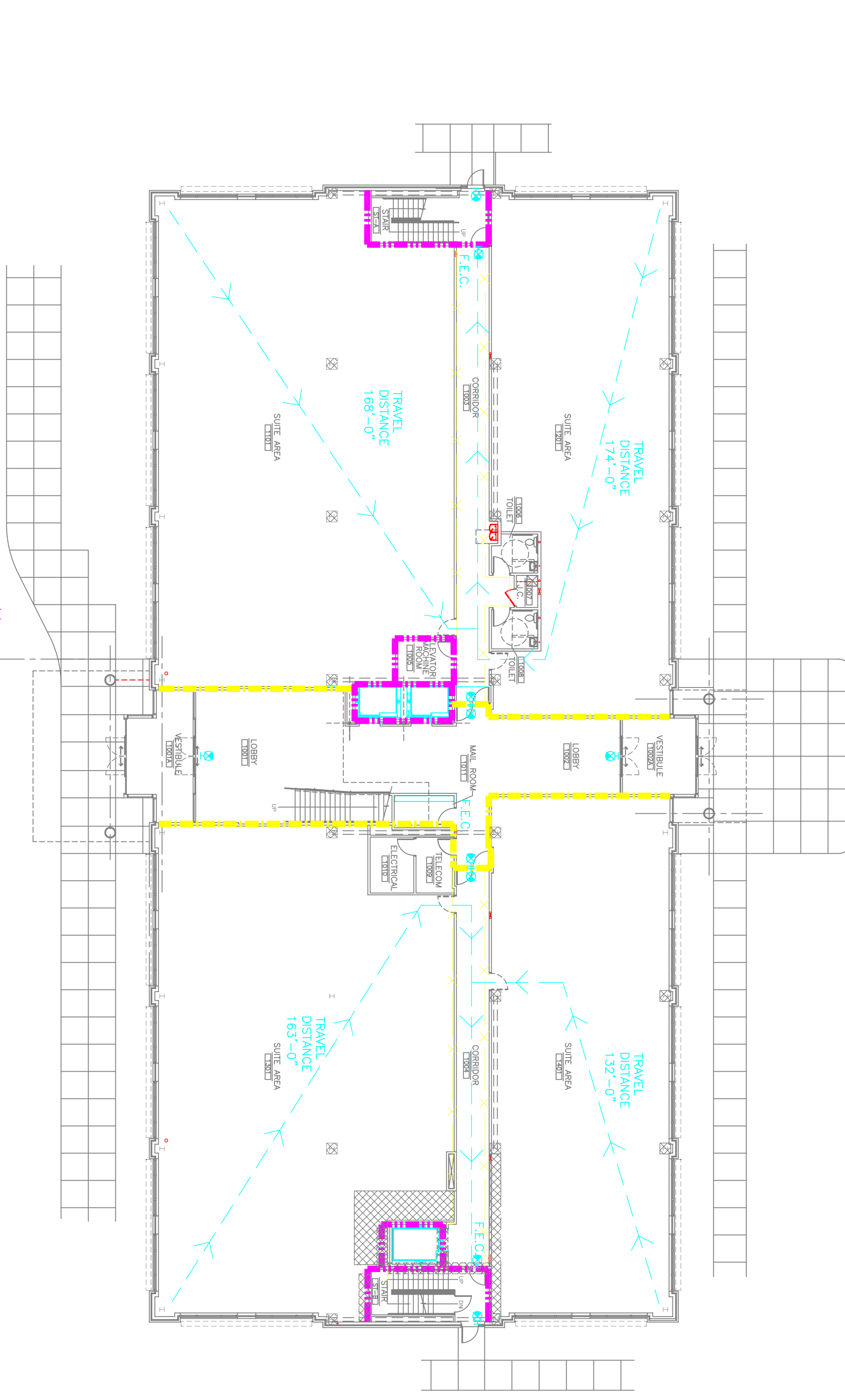
PER S.W. CODE REPAIR (REV. #1 9/7/06) AND IBC 2003 - SEISMIC SOIL SITE CLASS E.

REQUIRED BY CODE	PROVIDED BY DESIGN
STRUCTURAL FRAME (COLUMNS/BEAMS)	2 HR. @ SWIFTS
NON-BERME WALLS	0 HR.
FLOOR CONSTRUCTION	0 HR. / 2 HR.
ROOF CONSTRUCTION	0 HR.

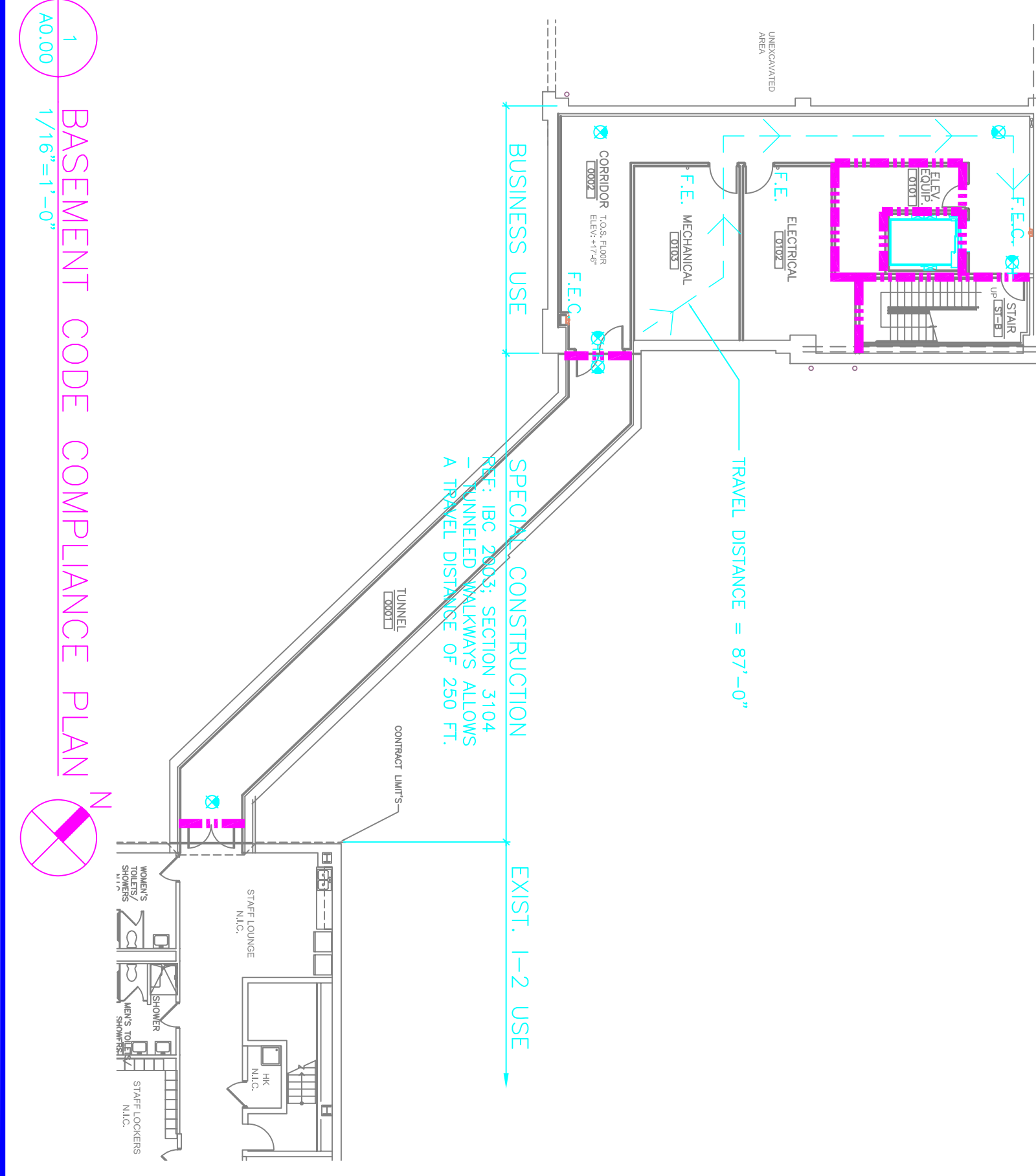
MEANS OF EGRESS

DOORS/WALLS/CORRIDORS: 0.15
 STAIRWAYS: 0.2
 NO. OF EXITS REQUIRED: 1
 RESIDENT: 1

3 SECOND FLOOR CODE COMPLIANCE PLAN



2 FIRST FLOOR CODE COMPLIANCE PLAN



1 BASEMENT CODE COMPLIANCE PLAN

4 THIRD FLOOR CODE COMPLIANCE PLAN

5 FOURTH FLOOR CODE COMPLIANCE PLAN

