

GENERAL SPECIFICATIONS

- HOOD CONSTRUCTION AND DESIGN MEETS UNIFORM MECHANICAL AND HVAC 2003.
- HOOD IS NSF AND ETL LISTED.
- ALL SURFACES OF HOOD ARE CONSTRUCTED OF 18 GA STAINLESS STEEL. SEAMS ARE CONTINUOUS WELDED LIQUID TIGHT.
- ALL INSTALLATION WORK IS TO BE PERFORMED BY QUALIFIED PERSONS AND IN ACCORDANCE WITH STATE AND LOCAL BUILDING CODE REQUIREMENTS.
- THE INSTALLATION SHALL BE IN ACCORDANCE WITH NFPA 96. REMOVAL OF SMOKE AND GREASE LADEN VAPORS FROM COMMERCIAL COOKING EQUIPMENT.
- HOOD IS PRE-PIPPED FOR ANSUL WET CHEMICAL FIRE SUPPRESSION.
- ALL EXHAUST DUCTWORK AND TRANSITIONS ARE TO BE PROVIDED BY THE HVAC CONTRACTOR.
- THE CAPTURE JET FAN AND SPEED CONTROL ARE PROVIDED BY HALTON. FIELD WIRING IS REQUIRED.
- CLEARANCE FROM HOOD AND DUCTS TO COMBUSTIBLE MATERIAL SHALL BE PER APPLICABLE BUILDING CODES.
- FOR PROPER OPERATION OF THE HOOD SYSTEM, IT IS THE RESPONSIBILITY OF THE GENERAL CONTRACTOR TO HAVE THE HOOD BALANCED AND TESTED TO ENSURE THAT THE EXHAUST AND SUPPLY REQUIREMENTS OF THE HOOD ARE MET.

INSTALLATION REQUIREMENTS

FOODSERVICE EQUIPMENT CONTRACTOR'S REQUIREMENTS

- PROVIDE DRAWINGS TO APPROPRIATE TRADES REFERENCING UTILITY SERVICE AND COORDINATE FINAL CONNECTION.
- DELIVER, ASSEMBLE AND INSTALL HALTON SYSTEM PER DRAWINGS.
- FURNISH WIRING AND PLUMBING DIAGRAMS TO END USER.
- THE F.S.E.C MUST INFORM HALTON OF ANY CHANGES IN EQUIPMENT OR BUILDING STRUCTURE. FIELD MODIFICATIONS ARE THE RESPONSIBILITY OF THE F.S.E.C.

ELECTRICAL CONTRACTOR'S REQUIREMENTS

- PROVIDE 120V CIRCUIT FOR HOOD LIGHTS AND CJ FANS WIRED FROM SWITCH PANEL. WHEN MULTIPLE HOODS ARE CONNECTED TOGETHER, COMPLETE FIELD WIRING BETWEEN HOODS.
- FLUORESCENT LIGHT FIXTURE
40 WATT MAX BULB= .7 AMP EA
CAPTURE JET FAN=.5 AMP EA

HOOD INFORMATION TABLE

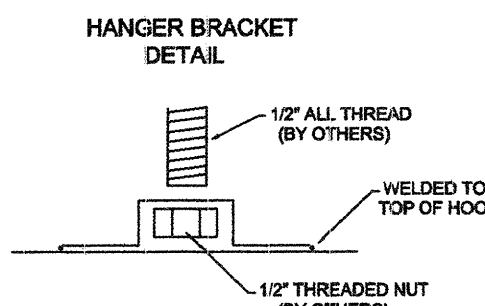
HOOD NO.	MODEL	QTY	SIZE			EXHAUST CFM	T.A.B INCHES W.C	TOTAL HOOD INCHES W.C	AIR FLOW REQUIREMENTS						CAPTURE CFM	STATIC PRESSURE	HOOD CONSTRUCTION	HOOD WEIGHT (LBS)	
			L	W	H				EXHAUST COLLAR			GREASE EXTRACTOR							
									QTY	L	W	QTY	L	H					TYPE
31	KVE	1	168"	51"	24"	1862	.15"	.50"	2	10"	8"	8	20"	13"	KSA	70	.23"	ALL 18GA 304 S.S.	1050
50L	KVE	1	102"	51"	24"	1701	.25"	.50"	1	12"	12"	5	20"	13"	KSA	43	.24"	ALL 18GA 304 S.S.	638
50R	KVE	1	102"	51"	24"	1522	.20"	.40"	1	12"	11"	5	20"	13"	KSA	43	.24"	ALL 18GA 304 S.S.	638
118	KVE	1	72"	51"	24"	910	.20"	.34"	1	10"	8"	3	20"	13"	KSA	30	.24"	ALL 18GA 304 S.S.	450

TOTAL EXHAUST= 5995

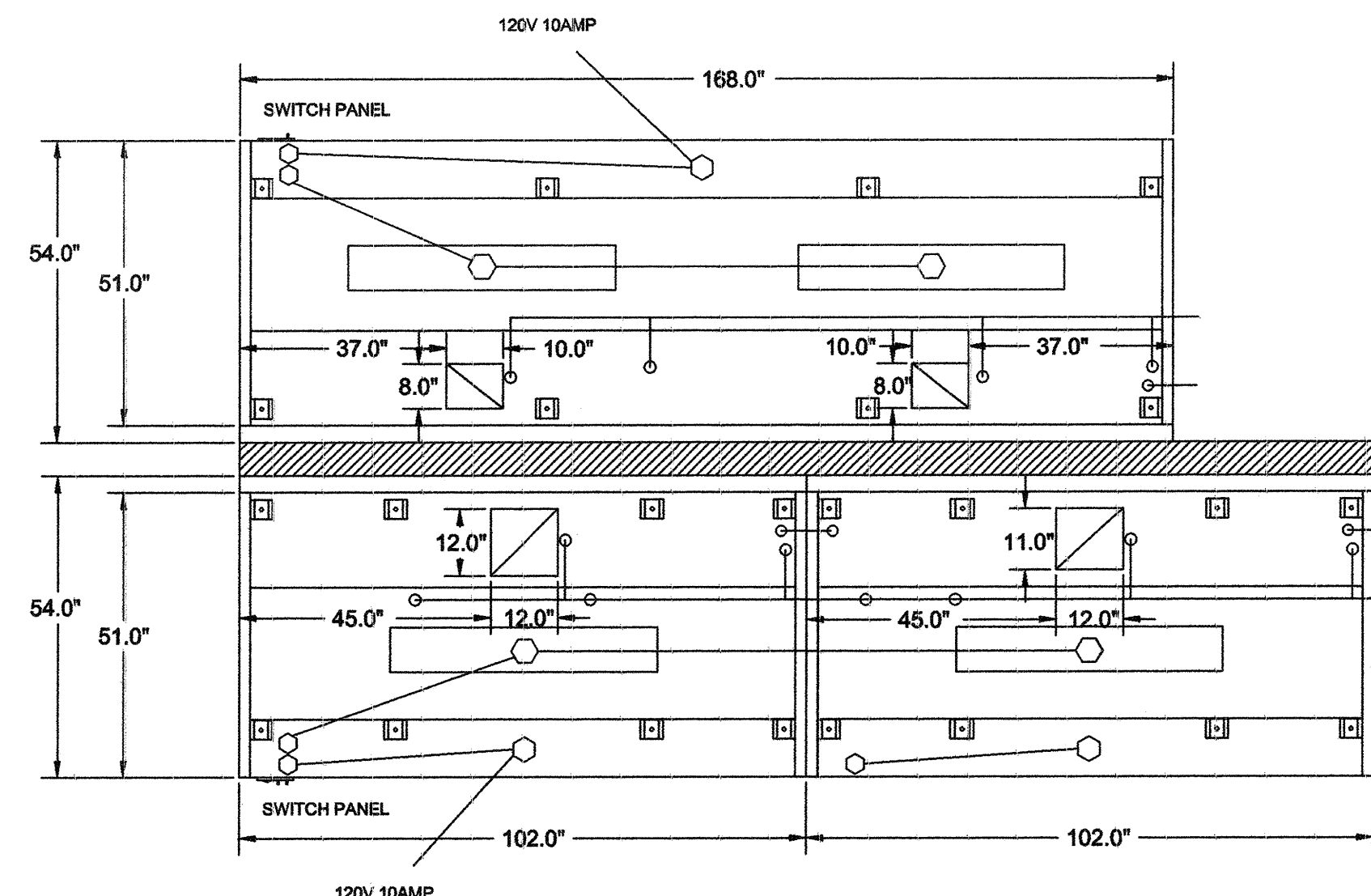
NOTE: VERIFICATION REQUIRED FOR EXHAUST. WILL EACH HOOD REQUIRE AN EXHAUST FAN OR SHARE A COMMON FAN.

HOOD INFORMATION TABLE

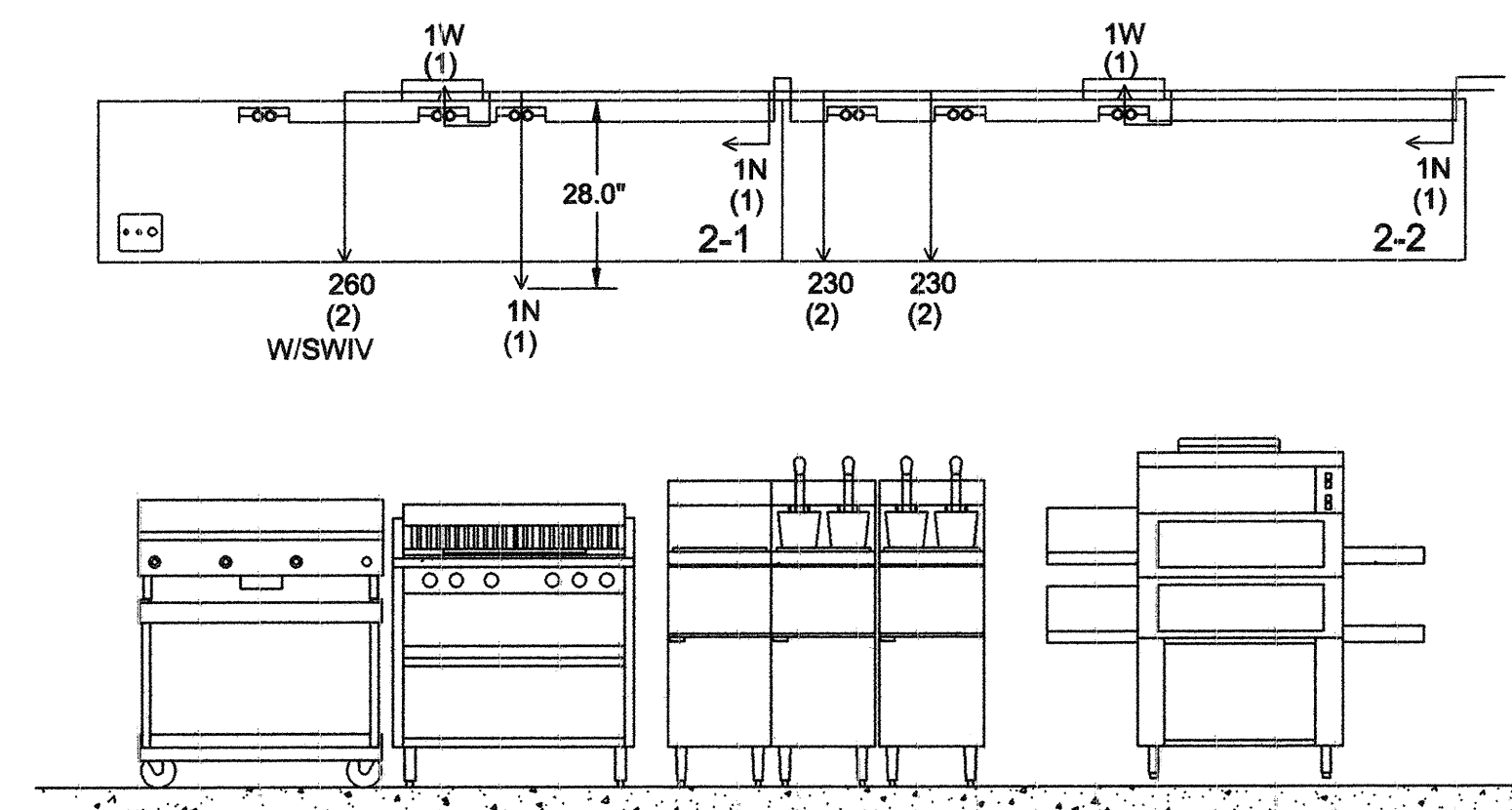
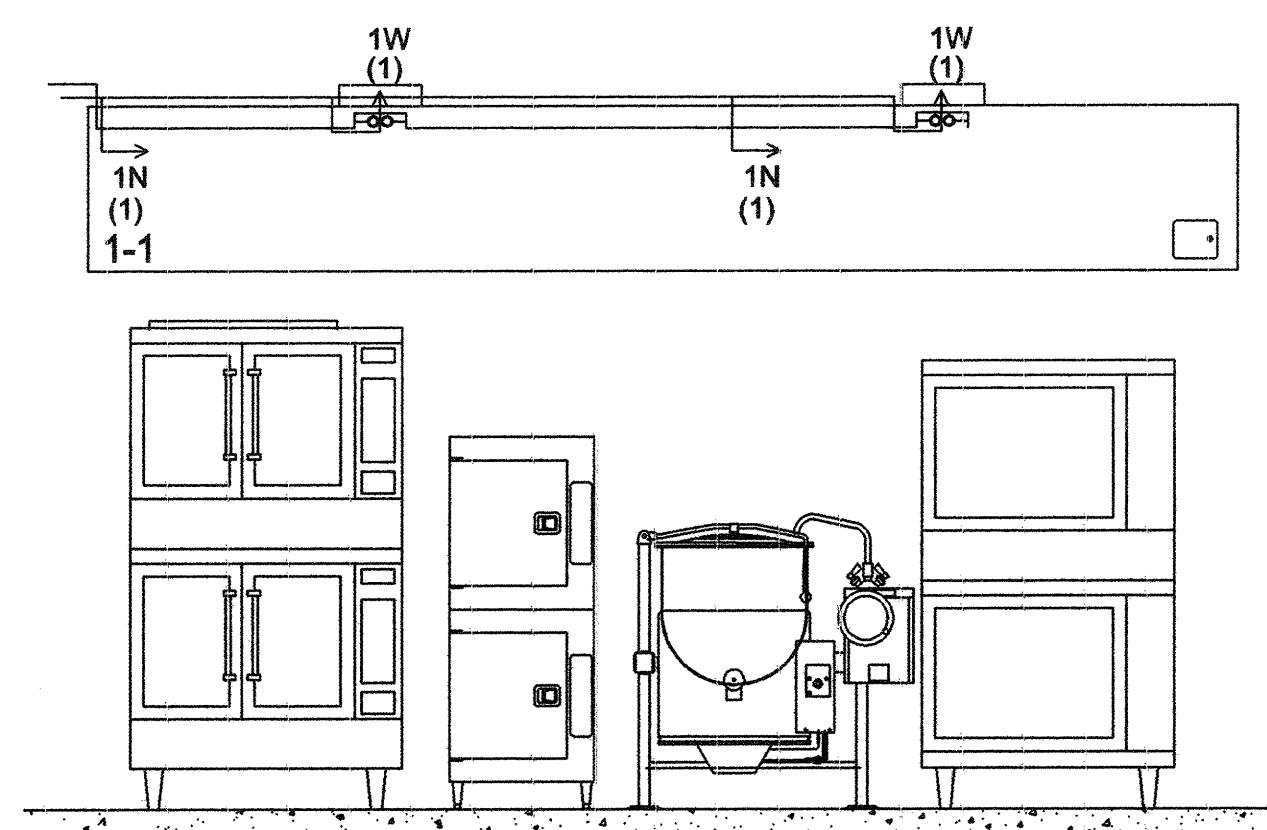
HOOD NO.	QTY	LIGHTS	SWITCH PANEL	M.C.P. LOCATION	STAND-OFF		BACKSPLASH			CEILING CLOSURES		FIRE SYSTEM		
					WIDTH	LOCATION	HEIGHT	LENGTH	INSULATED	HEIGHT	# OF SIDES	TYPE	SIZE	LOCATION
31	2	48"L FLUORESCENT T-8	HOOD LIGHT		3"	REAR						ANSUL R102	6 GALLON	REMOTE
50L	1	48"L FLUORESCENT T-8	HOOD FAN/LIGHT		3"	REAR								
50R	1	48"L FLUORESCENT T-8			3"	REAR								
118	1	48"L FLUORESCENT T-8	HOOD FAN/LIGHT		3"	REAR							3 GALLON	REMOTE



ITEM #31



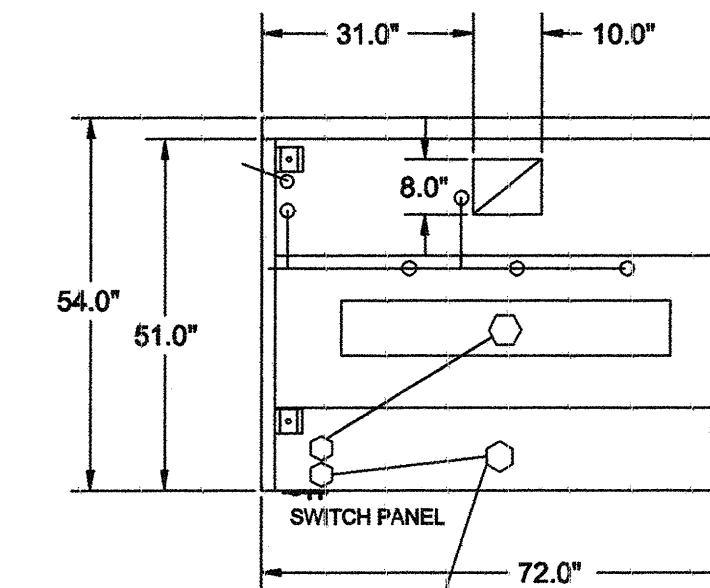
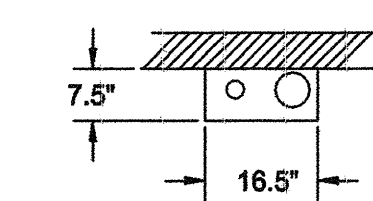
ITEM #50



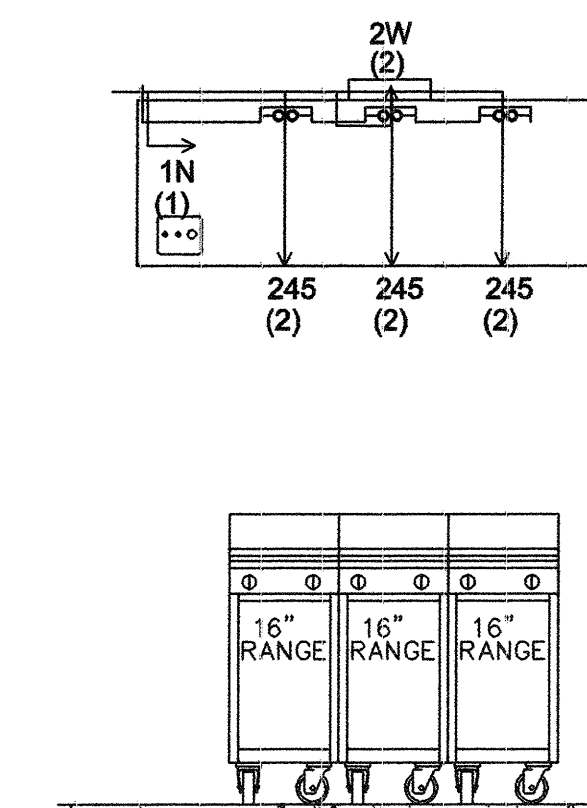
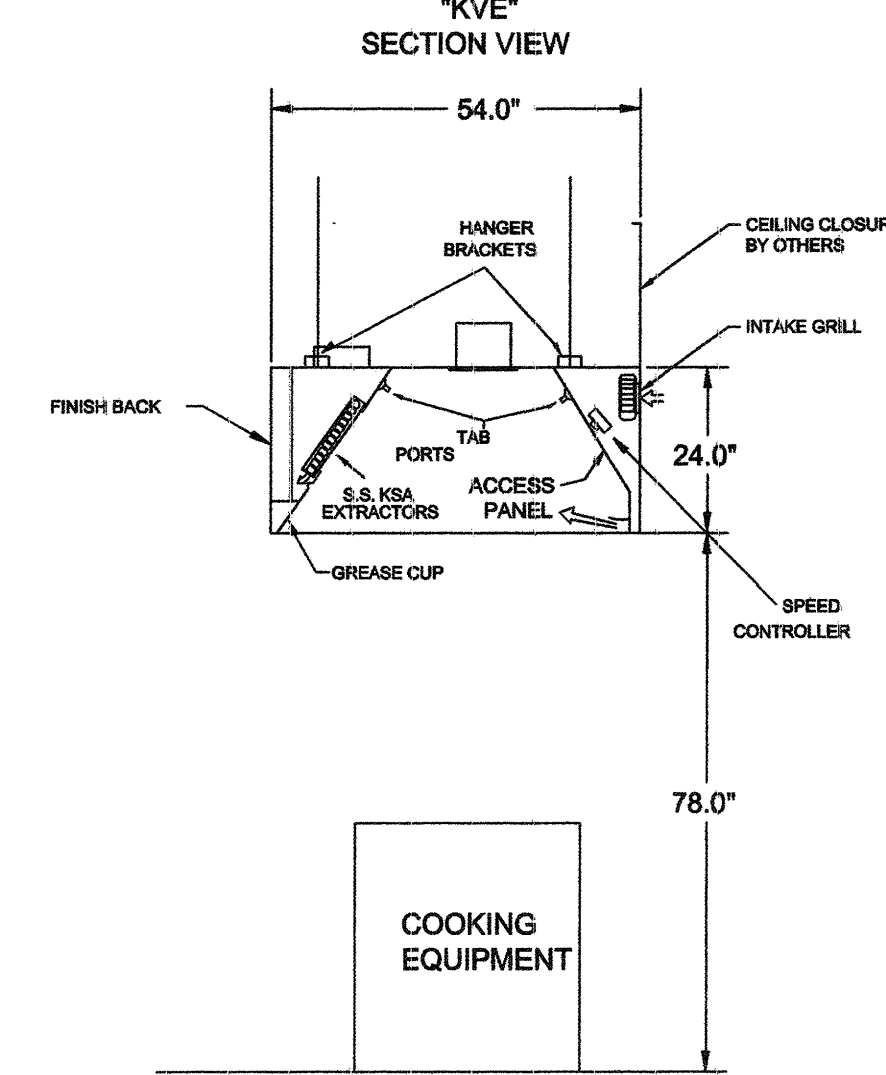
- ANSUL R-102 FIRE SYSTEM
- ONE TANK SYSTEM (3 GALLON)
- 3/8" BLACK IRON PIPING W/3/8" S.S. APPLIANCE DROPS
- MECHANICAL GAS VALVE = (ADVISE SIZE)

ITEM #118 REMOTE MOUNTED:

(1) REGULATED RELEASE

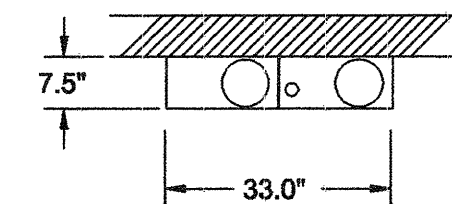


ITEM #118

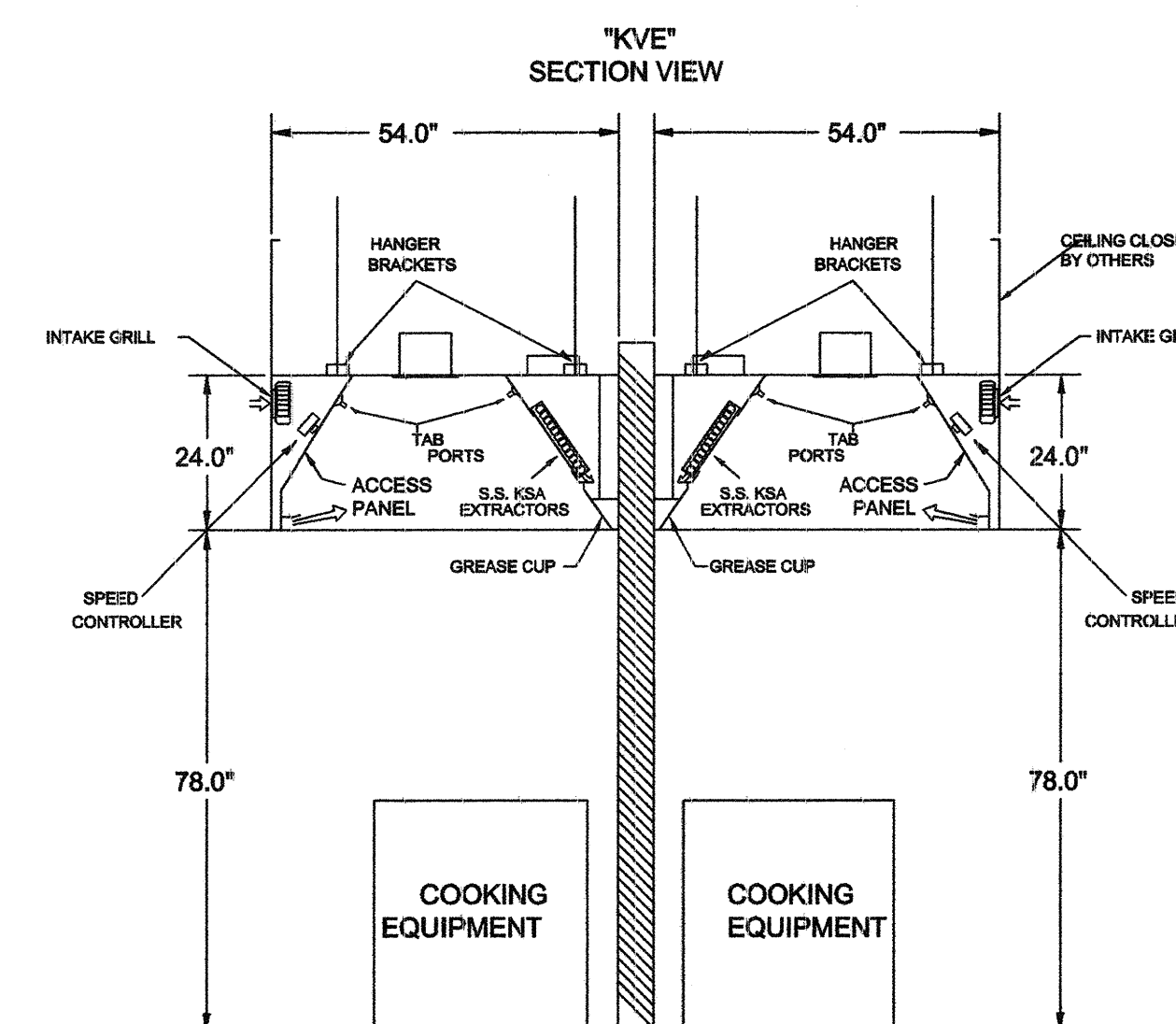


ITEM #35 REMOTE MOUNTED:

(1) REGULATED RELEASE



- ANSUL R-102 FIRE SYSTEM
- ONE TANK SYSTEM (3 GALLON)
- 3/8" BLACK IRON PIPING W/3/8" S.S. APPLIANCE DROPS
- MECHANICAL GAS VALVE = (ADVISE SIZE)



REV DATE: 08/18/06

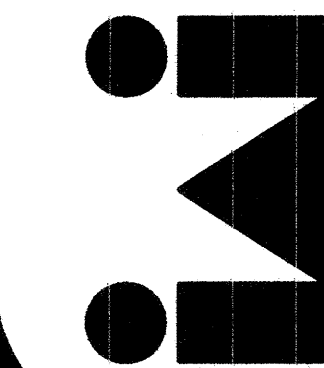
APPROVED DRAWING REQUIRED BEFORE FABRICATION
 DRAWING APPROVED
 APPROVED AS NOTED
 RESUBMIT DRAWING
 BY: _____ DATE: _____



PROJECT: MERCY HOSPITAL
 TITLE: HOOD LAYOUT
 LOCATION: PORTLAND, ME
 DATE: 08/15/06 DWG#: 13052

FINAL - ISSUED FOR CONSTRUCTION

Inman Foodservices Group, LLC



EMERGENCY
 Phone (606)-564-2886
 Fax (606)-564-5100
 4140 HWY 30, West
 Annsville, KY 40402

Project: **MERCY HEALTH SYSTEM OF MAINE**
PORTLAND, MAINE

Revisions:
 Job Number: 04166
 Date: 03-19-2007
 Drawn By: STAFF
 Checked By: STAFF
 SCALE: 1/4" = 1'-0"

This drawing and the design is the property of Inman Associates, Inc. The reproduction, copying or use of this drawing without written consent is prohibited and any infringement will be subject to legal action.

HOOD DRAWING
ITEM #31

Sheet **FS-1.7**

NOTE: THIS DRAWING INDICATES THE GENERAL EXTENT OF THE WORK AND IS NOT INTENDED TO INDICATE OR DESCRIBE ANY AND ALL WORK REQUIRED FOR THE FULL PERFORMANCE AND COMPLETION OF THE REQUIREMENTS OF THE CONTRACT DOCUMENTS.