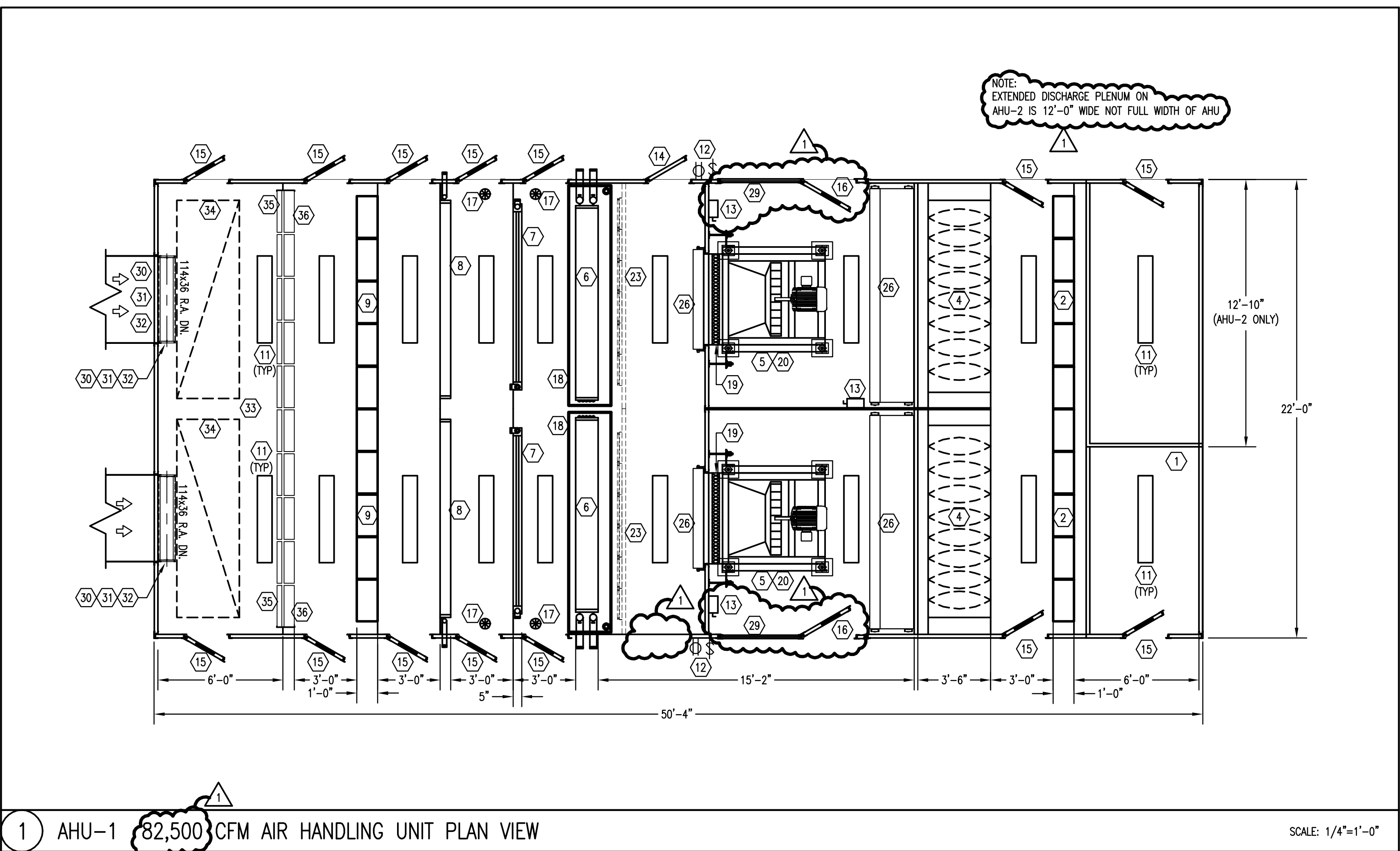


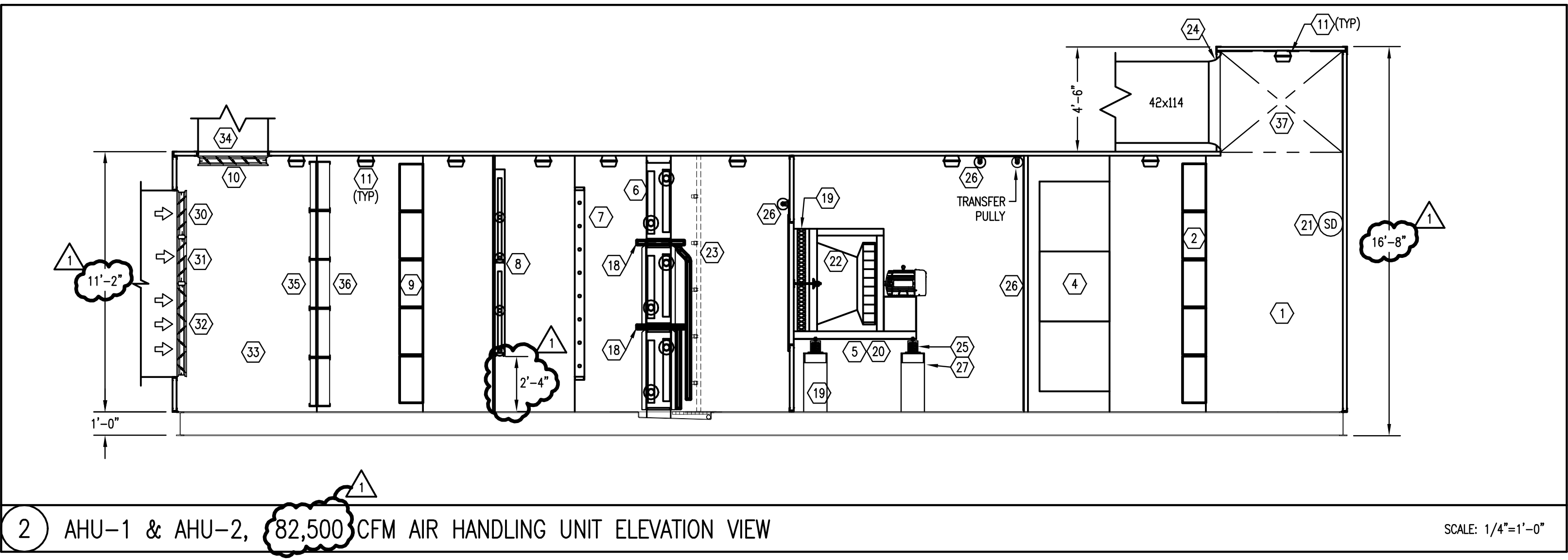
AHU Component Legend

- | | | |
|---|--|--|
| <p>1 SUPPLY AIR DISCHARGE PLENUM</p> <p>2 FINAL FILTERS, 24x24x12 (HEPA ABSOLUTE FILTERS 99.97% EFFICIENT) IN FRAME 20'-0"W x 10'-0"H</p> <p>3 SPACER/ACCESS SECTION</p> <p>4 SOUND ATTENUATOR (3 FEET LONG)</p> <p>5 VANE AXIAL SUPPLY FAN ON INERTIA BASE PLATFORM WITH VIBRATION MOUNTS FAN ISOLATION DAMPER AT DISCHARGE AND THRUST ARRESTORS. PROVIDE VARIABLE FREQUENCY DRIVE.</p> <p>6 COOLING COILS (BOLT ON) (6) @ 6'-6"W x 3'-0"H MINIMUM 8 ROW REMOVABLE COILS BOLTED TO STAINLESS STEEL SUPPORT FRAME. INDIVIDUAL COOLING COIL DRAIN PANS SHALL BE PROVIDED BELOW EACH COIL FOR THE FULL LENGTH OF COIL. PIPED SEPARATELY TO MAIN DRAIN LINE. FOR REMOVAL, DISCONNECT COIL PIPING, REMOVE COIL FROM FRAME, AND REMOVE COIL THROUGH COIL SECTION ACCESS DOOR.</p> <p>7 HUMIDIFIER, 2 BANKS EACH WITH 5 TUBES (REFER TO SCHEDULE FOR SIZES)</p> <p>8 STEAM PREHEAT COILS (4) @ 9'-6"W x 3'-3"H. PROVIDE BOLT-ON SUPPORT SYSTEM FOR COIL REMOVAL THROUGH ACCESS DOOR.</p> <p>9 CARBON ABSORBER FILTERS, 24"x24"x12" FILTERS IN FRAME 20'-0"W x 10'-0"H.</p> <p>10 RETURN AIR DAMPER</p> <p>11 AHU FLUORESCENT LIGHT (1'-0" x 4'-0")</p> <p>12 COMBINATION LIGHT SWITCH/DUPLEX RECEPTACLE</p> | <p>13 DISCONNECT SWITCH</p> <p>14 ACCESS DOOR (24" x 6'-6"). PROVIDE SPRING CHAIN TO LIMIT DOOR SWING TO 90°. BOTTOM OF DOOR SHALL BE A MINIMUM OF 24" A.F.F.</p> <p>15 ACCESS DOOR (24" x 6'-6") WITH 12x12 DOUBLE GLAZED WINDOW. PROVIDE SPRING CHAIN TO LIMIT DOOR SWING TO 90°. BOTTOM OF DOOR SHALL BE A MINIMUM OF 24" A.F.F.</p> <p>16 ACCESS DOOR (36" x 6'-6") WITH 12x12 DOUBLE GLAZED WINDOW. PROVIDE SPRING CHAIN TO LIMIT DOOR SWING TO 90°. BOTTOM OF DOOR SHALL BE A MINIMUM OF 24" A.F.F.</p> <p>17 FLOOR DRAIN, DRAINS SHALL BE PIPED BY AHU MANUFACTURER TO TAILPIECE AT SIDE OF UNIT.</p> <p>18 INDIVIDUAL COOLING COIL DRAIN PAN, FOR EACH COIL PIPED TO UNIT FLOOR. (STAINLESS STEEL, WELDED)</p> <p>19 FLEXIBLE CONNECTION</p> <p>20 THRUST ARRESTOR</p> <p>21 DUCT SMOKE DETECTOR (FURNISHED & WIRED TO THE FIRE ALARM SYSTEM BY ELECTRICAL SUBCONTRACTOR). INSTALLED AND WIRED TO SHUTDOWN FANS BY HVAC/A/C SUBCONTRACTORS</p> <p>22 ACOUSTIC DISCHARGE CONE, CONE INLET MATCHING FAN OUTLET</p> <p>23 REFER TO SPEC FOR ADD ALTERNATE OF LVC EMITTERS INSTALLED DOWNSTREAM OF COOLING COILS.</p> <p>24 DISCHARGE BELLMOUTH (RECTANGULAR). BELLMOUTH OUTER RING SHALL BE FLUSH WITH INSIDE PANEL OF AHU WALL. (REFER TO PLANS FOR SIZE & QUANTITY)</p> | <p>25 VIBRATION ISOLATION SPRING SUPPORT.</p> <p>26 MOTORIZED ALUMINUM ROLL UP DOOR FOR FAN CHAMBER ISOLATION. PROVIDE GUIDES & ROLLERS FOR DOOR PER MANUFACTURERS RECOMMENDATIONS. REFER TO HVAC SPECIFICATION.</p> <p>27 BUILT UP ANGLE IRON SUPPORT BASE. HEIGHT SUCH THAT FAN DISCHARGE ALIGNS WITH UNIT CENTERLINE.</p> <p>28 6" STRUCTURAL UNIT BASE RAIL</p> <p>29 REMOVABLE PANEL FOR FAN REMOVAL.</p> <p>30 4'-2"W x 2'-0"H MINIMUM O.A. PARALLEL BLADE DAMPER SECTION (10,825 CFM) W/MULTIPLE OPERATORS. (TYPICAL FOR 2)</p> <p>31 4'-2"W x 2'-0"H MID. RANGE O.A. PARALLEL BLADE DAMPER SECTION (10,825 CFM) W/MULTIPLE OPERATORS. (TYPICAL FOR 2)</p> <p>32 4'-2"W x 4'-0"H MAXIMUM O.A. OPPOSED BLADE DAMPER SECTION (20,000 CFM) W/MULTIPLE OPERATORS. (TYPICAL FOR 2)</p> <p>33 OUTSIDE AIR/RETURN AIR MIXING PLENUM</p> <p>34 RETURN AIR OPENINGS (3'-0" x 9'-6", TYPICAL FOR 2) WITH 80% FREE AREA SUBWAY GRATING, SIMILAR TO BORDEN'S METAL PRODUCTS.</p> <p>35 PRE-FILTERS (2" DEEP CARTRIDGE TYPE; 30% EFF.). BANK SIZE = 20'-0"W x 10'-0"H</p> <p>36 AFTER FILTERS (6" DEEP CARTRIDGE TYPE; 60% EFF.). BANK SIZE = 20'-0"W x 10'-0"H</p> <p>37 EXTENDED DISCHARGE PLENUM. PLENUM SIZE VARIES FOR EACH AHU. AHU-1 PLENUM DIMENSIONS = 22'-0"(W)x4'-6"(H)x6'-0"(D). AHU-2 PLENUM DIMENSIONS = 12'-10"(W)x4'-6"(H)x6'-0"(D).</p> |
|---|--|--|



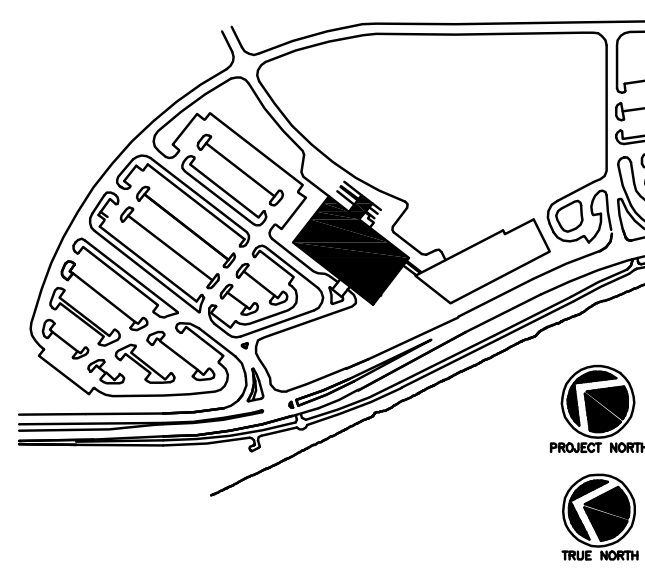
1 AHU-1 82,500 CFM AIR HANDLING UNIT PLAN VIEW

SCALE: 1/4"=1'-0"



2 AHU-1 & AHU-2, 82,500 CFM AIR HANDLING UNIT ELEVATION VIEW

SCALE: 1/4"=1'-0"



Consultant
CIVIL ENGINEER
DeLuco-Hoffman Associates, Inc.
778 Main Street, Suite 8
South Portland, ME 04106
Phone: (207) 775-1121
Fax: (207) 879-0896

Consultant
ASSOCIATE ARCHITECT/STRUCTURAL ENGINEER
SMRT
144 Fore Street P.O. Box 618
Portland, Maine 04104
Phone: (207) 772-3846
Fax: (207) 772-1070

Consultant
MECHANICAL/ELECTRICAL ENGINEER
Bard, Rao + Athanas Consulting Engineers, LLC
The Arsenal on the Charles
311 Arsenal Street
Watertown, MA 02472-5789
Phone: 617.254.2016
Fax: 617.924.9339

Consultant
EQUIPMENT PLANNING
Gene Burton & Associates
1893 General George Patton Drive
Franklin, Tennessee 37067
Phone: (615) 376-3100
Fax: (615) 376-3114

Consultant
CONSTRUCTION MANAGER
Gibane Building Company
7 Jackson Walkway
Providence, Rhode Island 02903
Phone: (401) 456-5905
Fax: (401) 456-5516

Consultant
FOOD SERVICE
Inman Foodservice, LLC
1808 West End Ave, Suite 1400
Nashville, TN 37203
Phone: (615) 321-5591
Fax: (615) 321-5689

It is the responsibility of the Construction Manager/General Contractor and all Sub-Contractors to verify all dimensions and accept conditions of prior work by related trades before proceeding with any work.

Date
11/10/06 Final-Issued for Construction

Drawn By
RWA

Scale
AS NOTED

Francis

Cauffman

Foley

Hoffmann

Francis Cauffman 2120 Arch Street
Foley Hoffmann Philadelphia, PA 19103
Architects Ltd. 215-568-8250

Project Title

Mercy Health Care System of Maine

FORE RIVER SHORT STAY HOSPITAL



Project Number
F05-4898

Drawing Title and Number
HVAC
AIR HANDLING UNIT
PART PLAN

H4.01