

Consultant
 CIVIL ENGINEER
 DeLuca-Hoffman Associates, Inc.
 778 Main Street, Suite 8
 South Portland, ME 04106
 Phone: (207) 775-1121
 Fax: (207) 879-0896

Consultant
 ASSOCIATE ARCHITECT/STRUCTURAL ENGINEER
 SMRT
 144 Fore Street P.O. Box 618
 Portland, Maine 04104
 Phone: (207) 772-3846
 Fax: (207) 772-1070

Consultant
 MECHANICAL/ELECTRICAL ENGINEERS, LLC
 The Arsenal on the Charles
 311 Arsenal Street
 Watertown, MA 02472-5789
 Phone: 617.254.0016
 Fax: 617.924.9339

Consultant
 EQUIPMENT PLANNING
 Gene Burton & Associates
 1893 General George Patton Drive
 Franklin, Tennessee 37067
 Phone: (615) 376-3100
 Fax: (615) 376-3114

Consultant
 CONSTRUCTION MANAGER
 Gilbane Building Company
 7 Jackson Walkway
 Providence, Rhode Island 02903
 Phone: (401) 456-5900
 Fax: (401) 456-5516

Consultant
 FOOD SERVICE
 Inman Foodservice, LLC
 1808 West End Ave, Suite 1400
 Nashville, TN 37203
 Phone: (615) 321-5591
 Fax: (615) 321-5689

It is the responsibility of the Construction Manager/General Contractor and all Sub-Contractors to verify all dimensions and accept conditions of prior work by related trades before proceeding with any work.

Date
 11/10/06 Final-Issued for Construction

Drawn By
 FA

Scale
 N.T.S.

Francis

Cauffman

Foley

Hoffmann

Francis Cauffman
 Foley Hoffmann
 Architects Ltd.

2120 Arch Street
 Philadelphia, PA 19103
 215-568-8250

Project Title

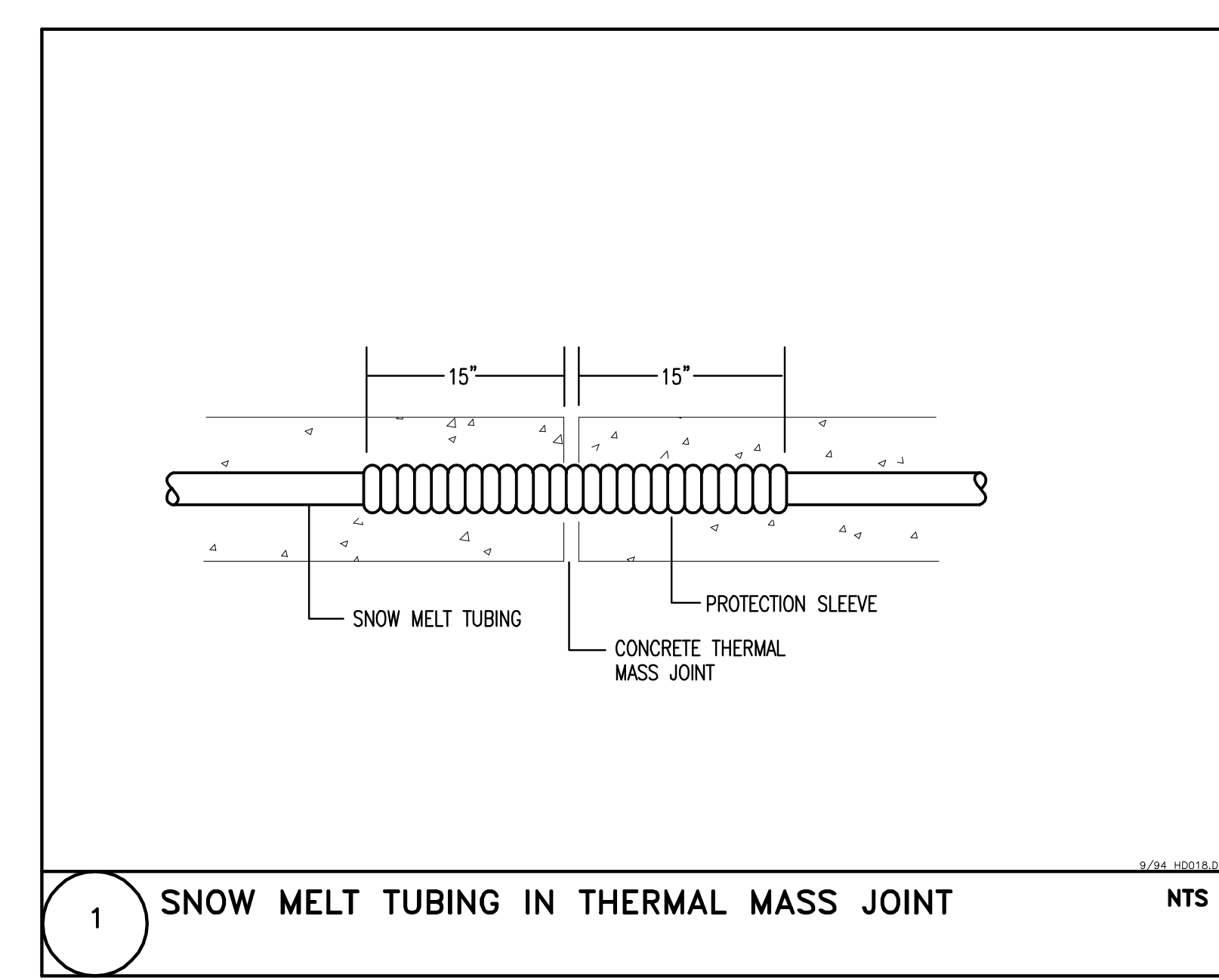
Mercy Health Care
 System of Maine

FORE RIVER SHORT
 STAY HOSPITAL

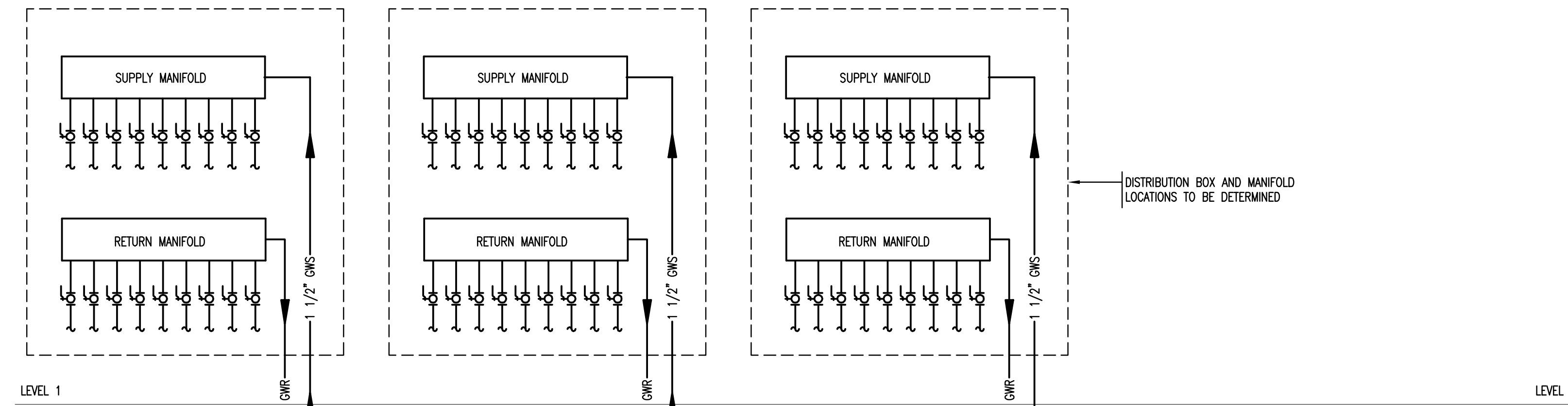
Project Number
 F05-4898

Drawing Title and Number
 HVAC
 HOT WATER
 FLOW DIAGRAM

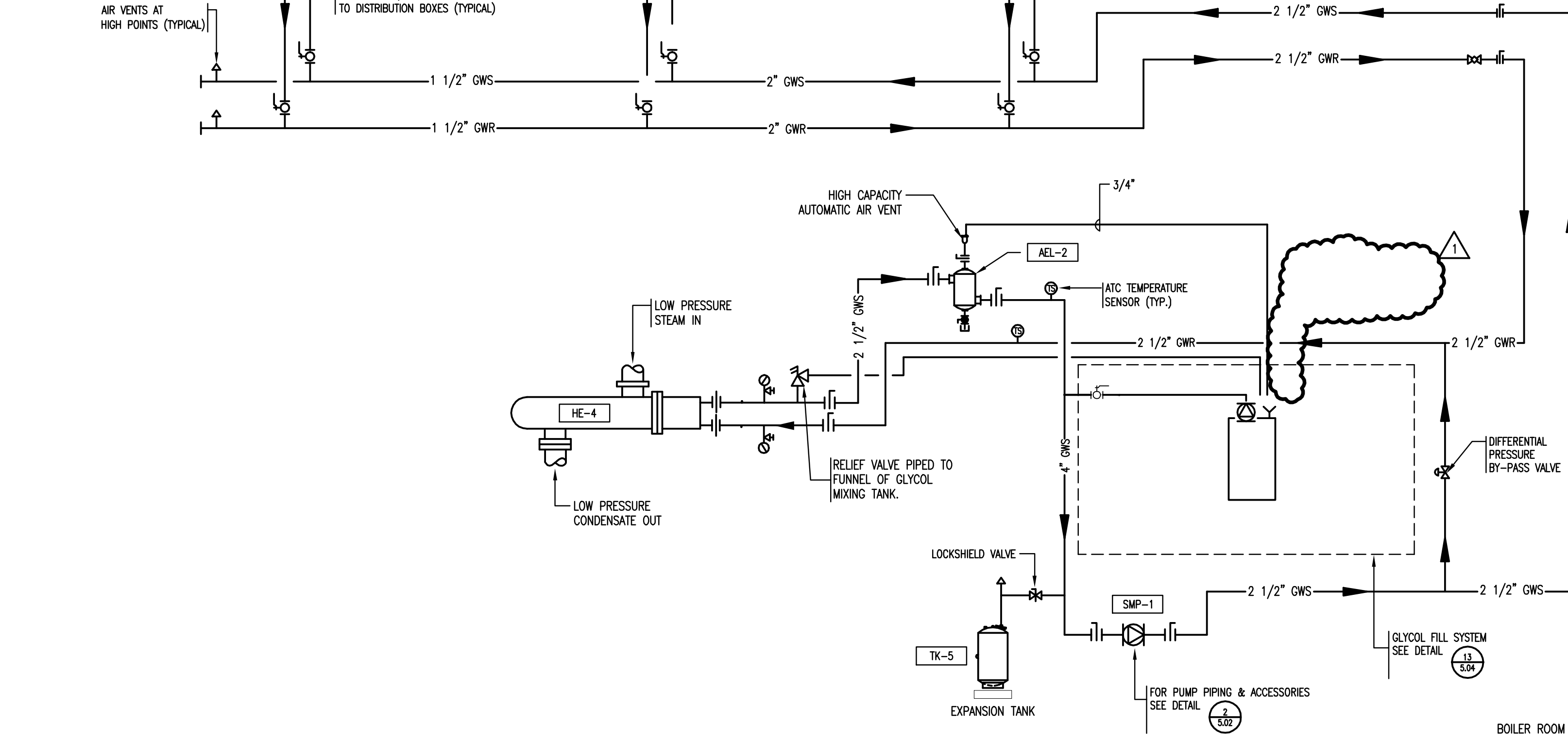
H3.00



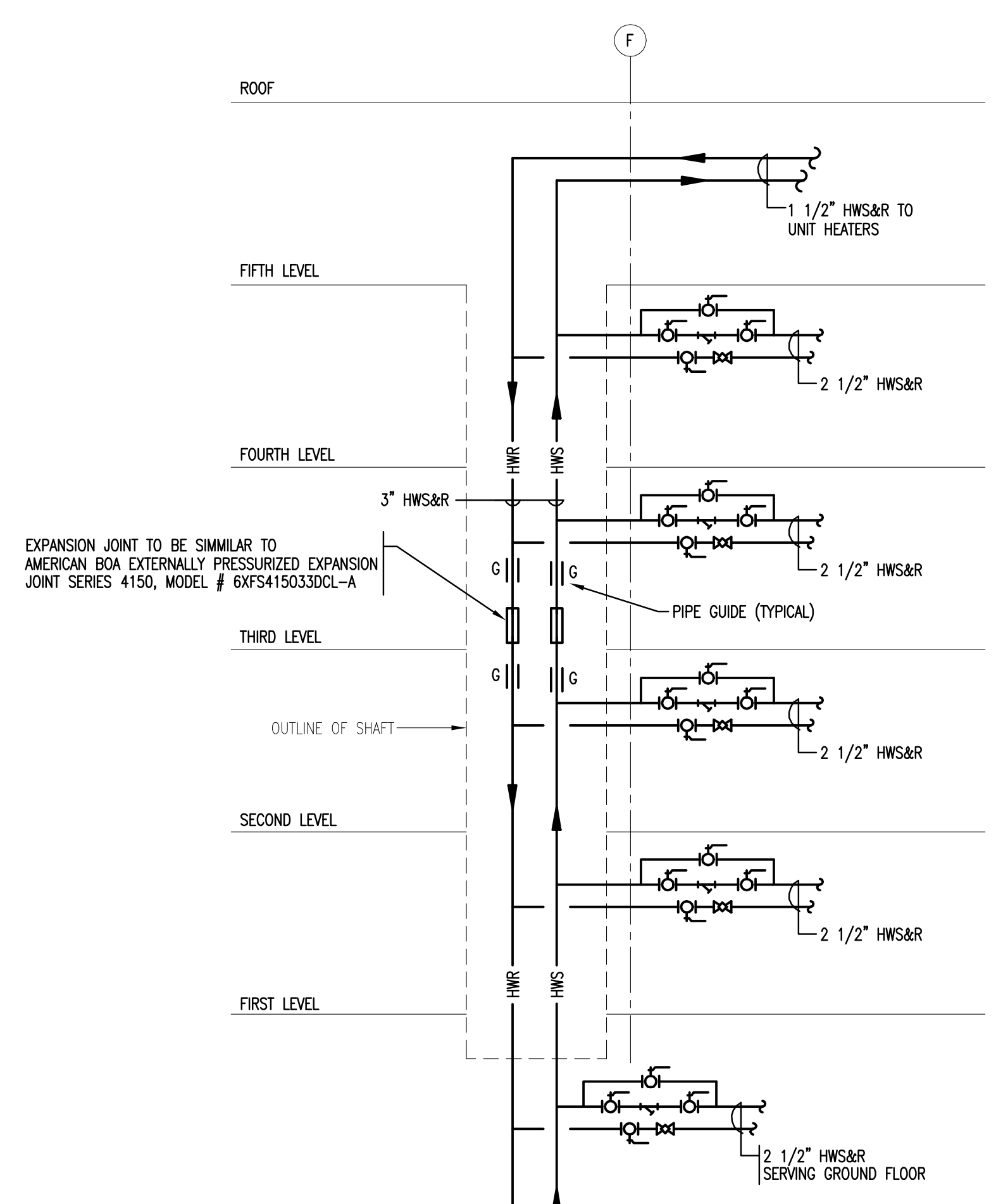
1 SNOW MELT TUBING IN THERMAL MASS JOINT NTS



LEVEL 1



BOILER ROOM



ROOF

FIFTH LEVEL

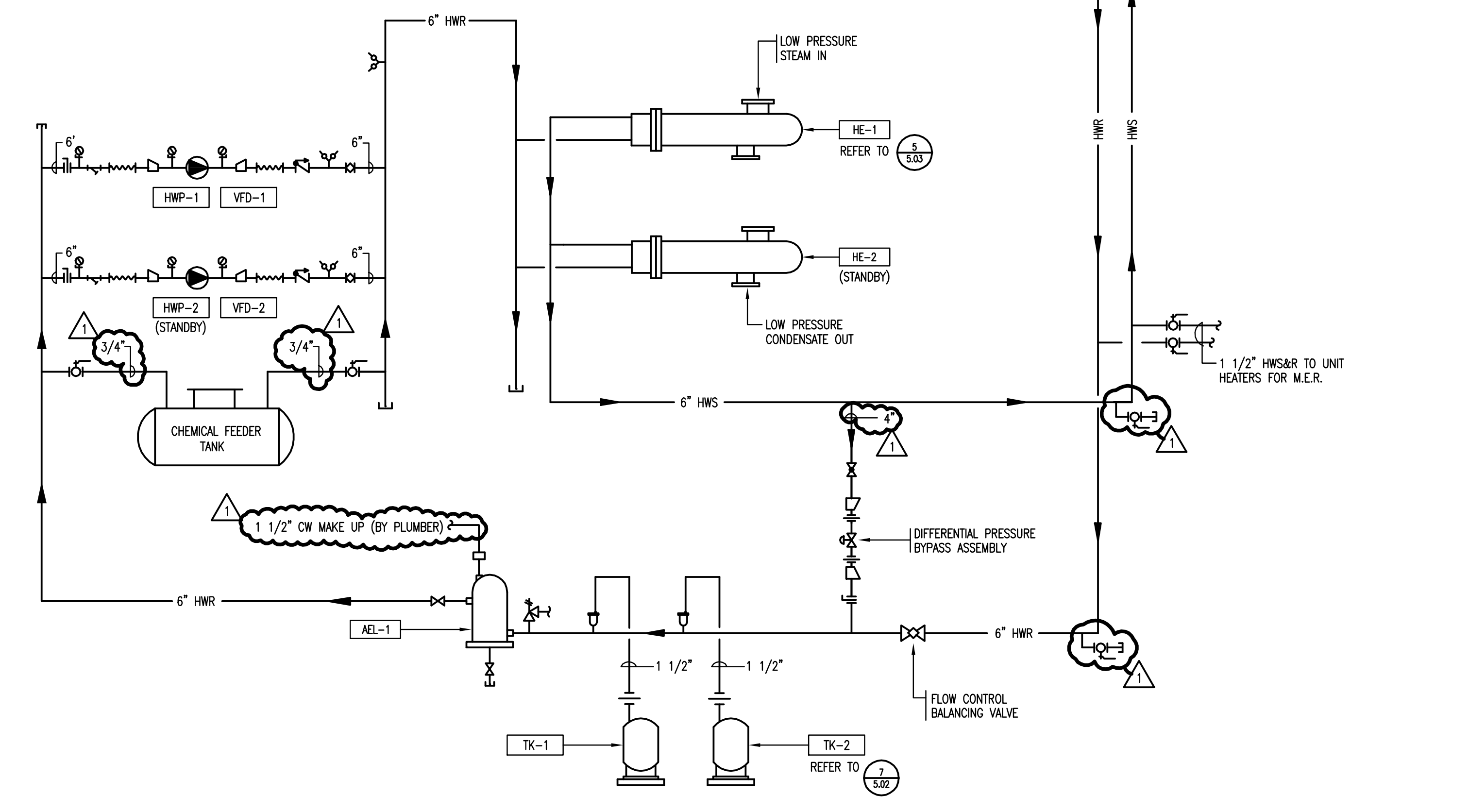
FOURTH LEVEL

THIRD LEVEL

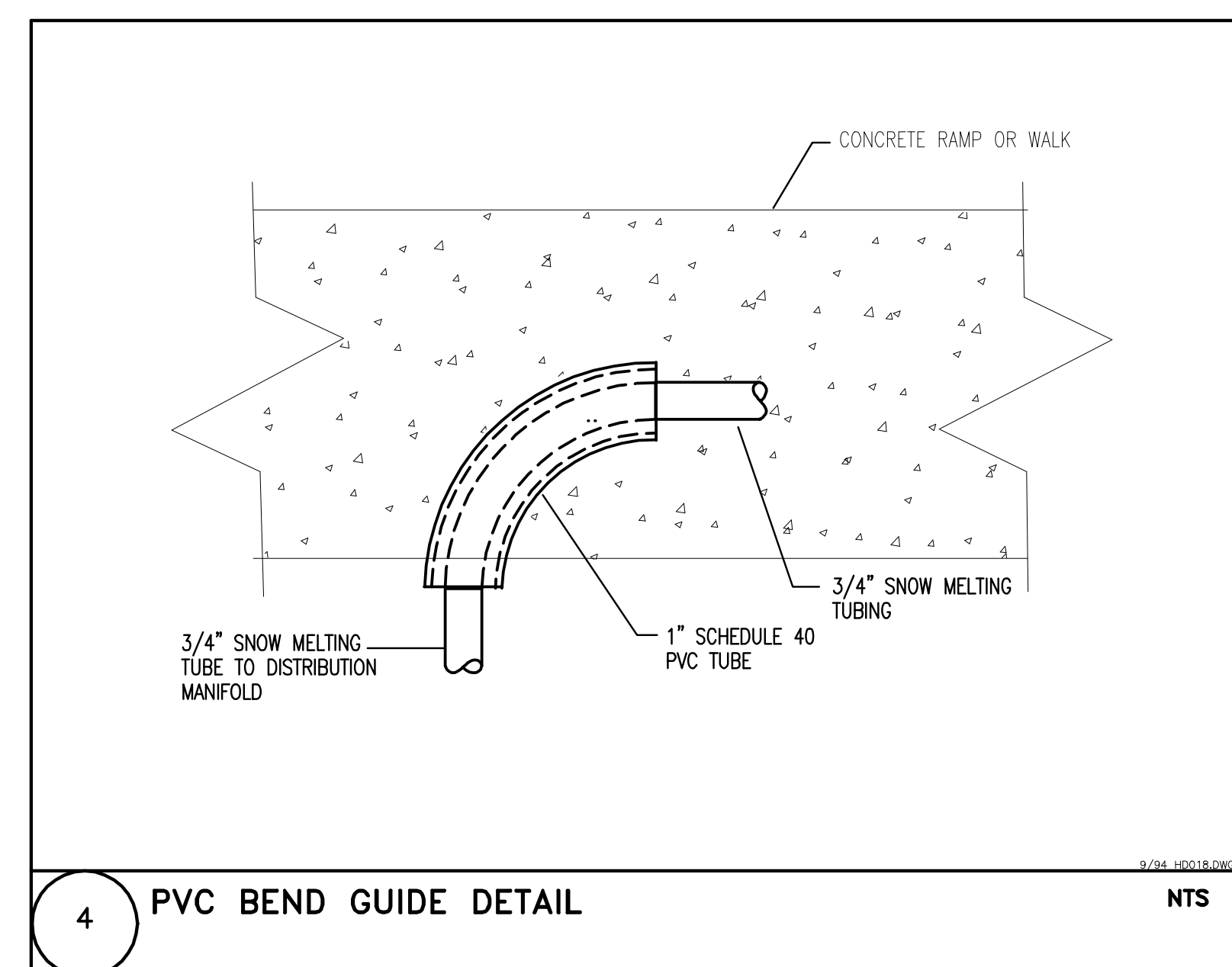
OUTLINE OF SHAFT

SECOND LEVEL

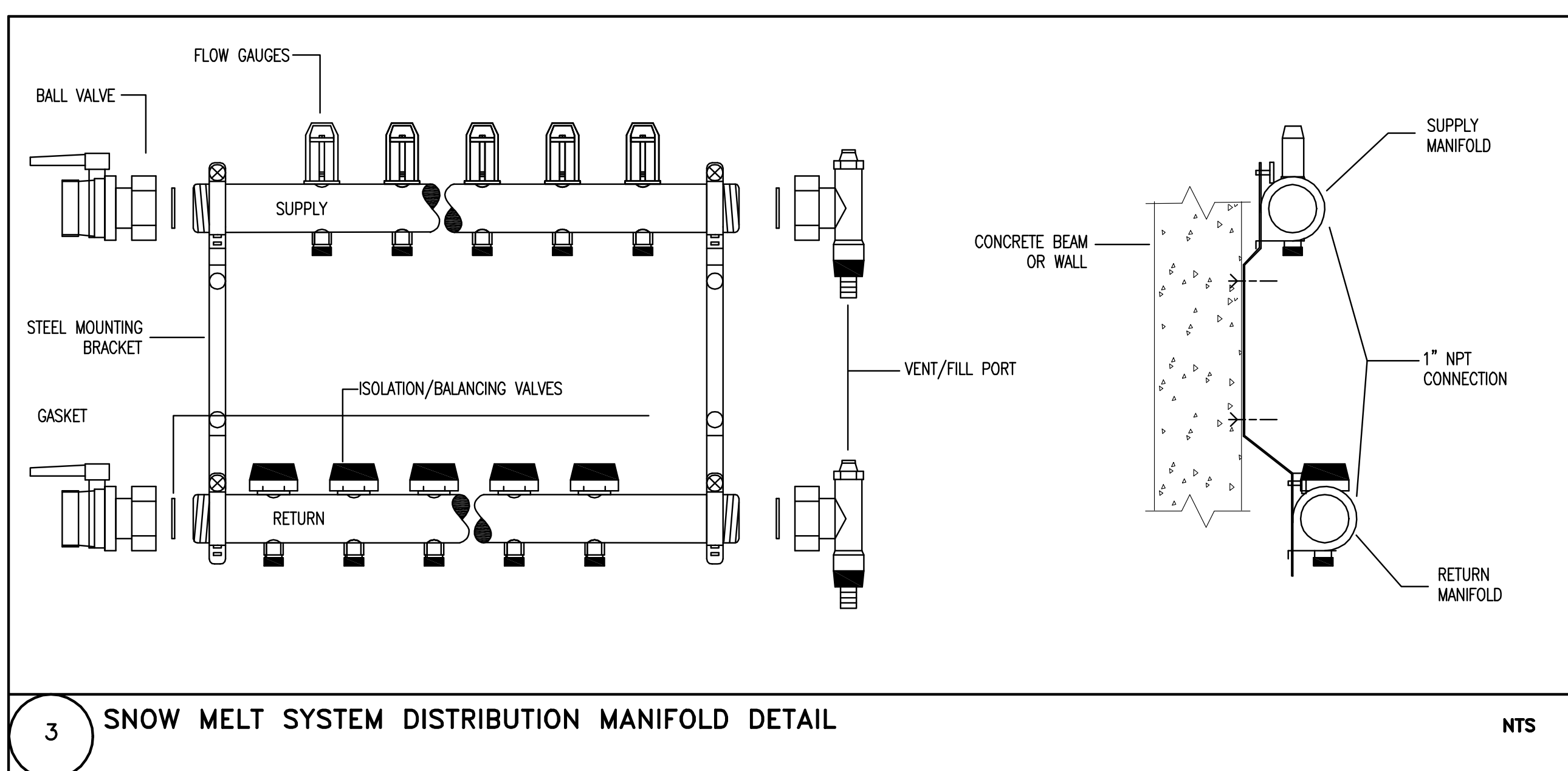
FIRST LEVEL



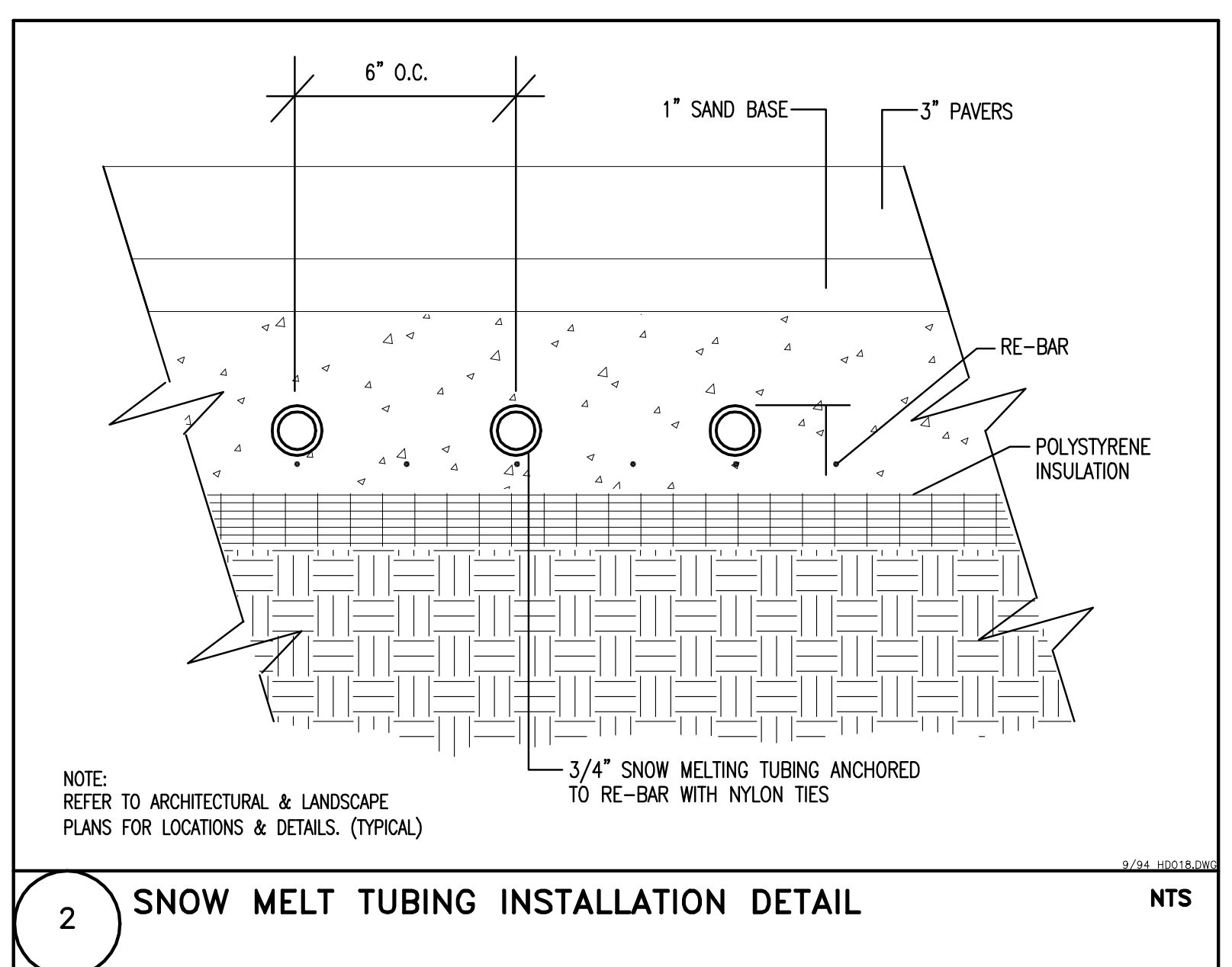
BOILER ROOM



4 PVC BEND GUIDE DETAIL NTS



3 SNOW MELT SYSTEM DISTRIBUTION MANIFOLD DETAIL NTS



2 SNOW MELT TUBING INSTALLATION DETAIL NTS