

Consultant  
 CIVIL ENGINEER  
 DeLuca-Hoffman Associates, Inc.  
 778 Main Street, Suite 8  
 South Portland, ME 04106  
 Phone: (207) 772-1121  
 Fax: (207) 879-0896

Consultant  
 ASSOCIATE ARCHITECT/STRUCTURAL ENGINEER  
 SMRT  
 144 Fore Street P.O. Box 618  
 Portland, Maine 04104  
 Phone: (207) 772-3846  
 Fax: (207) 772-1070

Consultant  
 MECHANICAL/ELECTRICAL ENGINEER  
 The Arsenal on the Charles  
 311 Arsenal Street  
 Watertown, MA 02472-5789  
 Phone: (617) 376-3100  
 Fax: (617) 924-9339

Consultant  
 EQUIPMENT PLANNING  
 Gene Burton & Associates  
 1893 General George Patton Drive  
 Franklin, Tennessee 37067  
 Phone: (615) 376-3100  
 Fax: (615) 376-3114

Consultant  
 CONSTRUCTION MANAGER  
 Gibbons Building Company  
 7 Jackson Walkway  
 Providence, Rhode Island 02903  
 Phone: (401) 456-5905  
 Fax: (401) 456-5516

Consultant  
 FOOD SERVICE  
 Inman Foodservice, LLC  
 1808 West End Ave. Suite 1400  
 Nashville, TN 37203  
 Phone: (615) 321-5591  
 Fax: (615) 321-5689

It is the responsibility of the Construction Manager/General Contractor and all Sub-Contractors to verify all dimensions and accept conditions of prior work by related trades before proceeding with any work.

Date  
 11/10/06 Final-Issued for Construction

Drawn By  
 FA

Scale  
 1/8" = 1'-0"

Francis

Cauffman

Foley

Hoffmann

Francis Cauffman  
 Foley Hoffmann  
 Architects Ltd.

2120 Arch Street  
 Philadelphia, PA 19103  
 215-568-8250

Project Title  
 Mercy Health Care  
 System of Maine

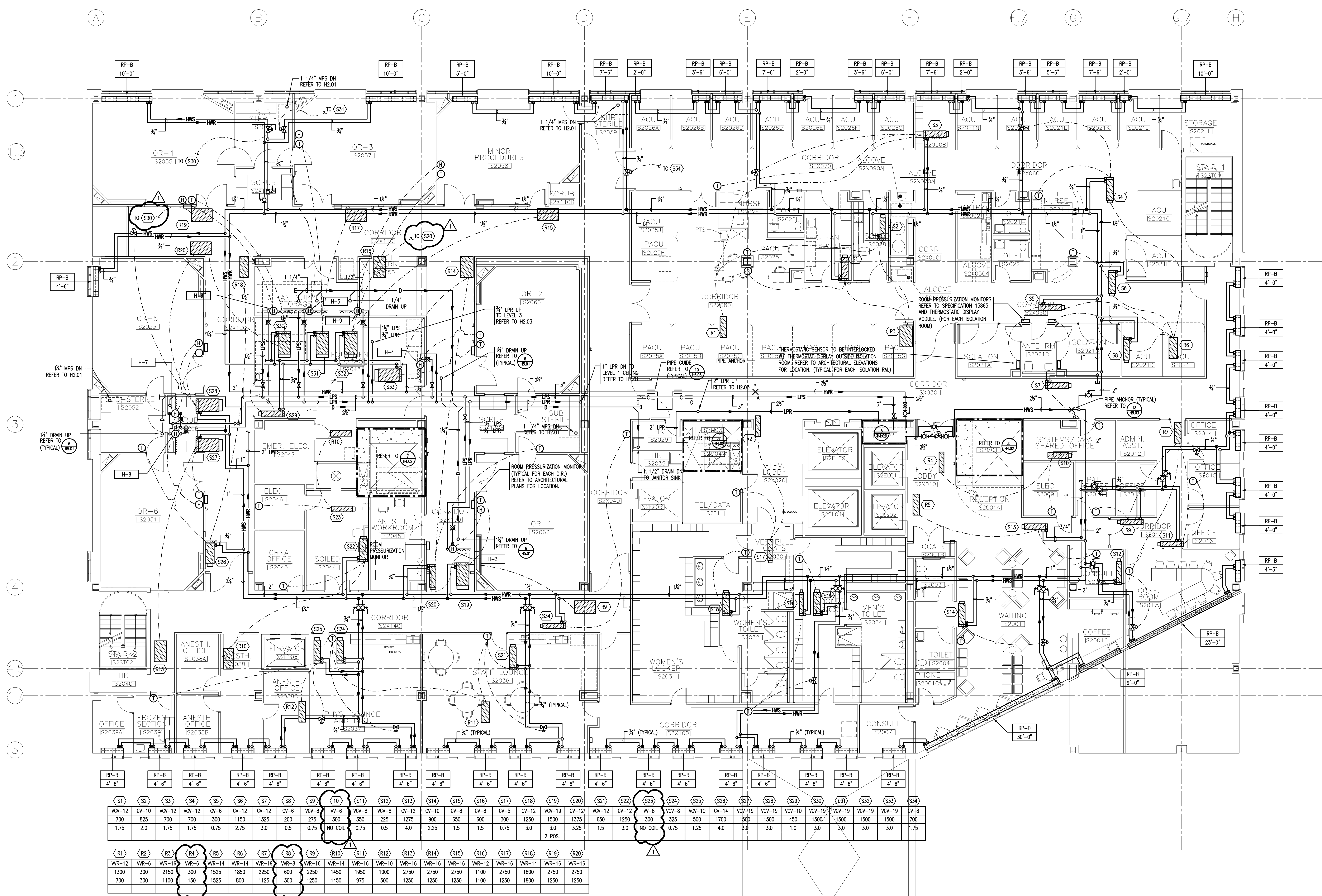
FORE RIVER SHORT  
 STAY HOSPITAL



Project Number  
 F05-4898

Drawing Title and Number  
 HVAC  
 PIPING  
 LEVEL 2 PLAN

H2.02



(S1)	(S2)	(S3)	(S4)	(S5)	(S6)	(S7)	(S8)	(S9)	(S10)	(S11)	(S12)	(S13)	(S14)	(S15)	(S16)	(S17)	(S18)	(S19)	(S20)	(S21)	(S22)	(S23)	(S24)	(S25)	(S26)	(S27)	(S28)	(S29)	(S30)	(S31)	(S32)	(S33)	(S34)
VOV-12	CV-10	VOV-12	VOV-12	CV-6	CV-12	CV-12	CV-6	VOV-8	W-6	VOV-8	VOV-8	CV-12	CV-10	CV-8	CV-8	CV-5	CV-12	VOV-19	CV-12	VOV-12	CV-12	NO COIL	VOV-8	VOV-10	CV-14	VOV-19	VOV-19	VOV-19	VOV-19	VOV-19	VOV-19	CV-8	
700	825	700	700	300	1150	1325	200	275	300	350	225	1275	900	650	600	300	1250	1500	1375	650	1250	300	325	900	1700	1500	450	1500	1500	1500	700		
1.75	2.0	1.75	1.75	0.75	2.75	3.0	0.5	0.75	NO COIL	0.75	0.5	4.0	2.25	1.5	1.5	0.75	3.0	3.0	3.25	1.5	3.0	NO COIL	0.75	1.25	4.0	3.0	3.0	1.0	3.0	3.0	1.75		

(R1)	(R2)	(R3)	(R4)	(R5)	(R6)	(R7)	(R8)	(R9)	(R10)	(R11)	(R12)	(R13)	(R14)	(R15)	(R16)	(R17)	(R18)	(R19)	(R20)
WR-12	WR-6	WR-12	WR-6	WR-14	WR-14	WR-19	WR-8	WR-16	WR-14	WR-16	WR-10	WR-16	WR-16	WR-16	WR-12	WR-16	WR-14	WR-16	WR-16
1300	300	2150	300	1525	1850	2250	600	2250	1450	1950	1000	2750	2750	2750	1100	2750	1800	2750	2750
700	300	1100	150	1525	800	1125	300	1250	1450	975	500	1250	1250	1250	1100	1250	1800	1250	1250

1 SECOND FLOOR PLAN  
 A1.03 1/8" = 1'-0"