

Consultant
 CIVIL ENGINEER
 DeLuca-Hoffman Associates, Inc.
 778 Main Street, Suite 8
 South Portland, ME 04106
 Phone: (207) 775-1121
 Fax: (207) 879-0896

Consultant
 ASSOCIATE ARCHITECT/STRUCTURAL ENGINEER
 SMRT
 144 Fore Street P.O. Box 618
 Portland, Maine 04104
 Phone: (207) 772-3846
 Fax: (207) 772-1070

Consultant
 MECHANICAL/ELECTRICAL ENGINEER
 Board, Rao + Athanas Engineering Engineers, LLC
 The Arsenal on the Charles
 311 Arsenal Street
 Watertown, MA 02472-5789
 Phone: 617.254.0016
 Fax: 617.924.9339

Consultant
 EQUIPMENT PLANNING
 Gene Burton & Associates
 1893 General George Patton Drive
 Franklin, Tennessee 37067
 Phone: (615) 376-3100
 Fax: (615) 376-3114

Consultant
 CONSTRUCTION MANAGER
 Gilbane Building Company
 7 Jackson Walkway
 Providence, Rhode Island 02903
 Phone: (401) 456-5905
 Fax: (401) 456-5516

Consultant
 FOOD SERVICE
 Inman Foodservice, LLC
 1808 West End Ave, Suite 1400
 Nashville, TN 37203
 Phone: (615) 321-5591
 Fax: (615) 321-5689

It is the responsibility of the Construction Manager/General Contractor and all Sub-Contractors to verify all dimensions and accept conditions of prior work by related trades before proceeding with any work.

Date
 11/10/06 Final-Issued for Construction

Drawn By
 FA

Scale
 1/8" = 1'-0"

Francis

Cauffman

Foley

Hoffmann

Francis Cauffman
 Foley Hoffmann
 Architects Ltd. 2120 Arch Street
 Philadelphia, PA 19103
 215-568-8250

Project Title

Mercy Health Care
 System of Maine

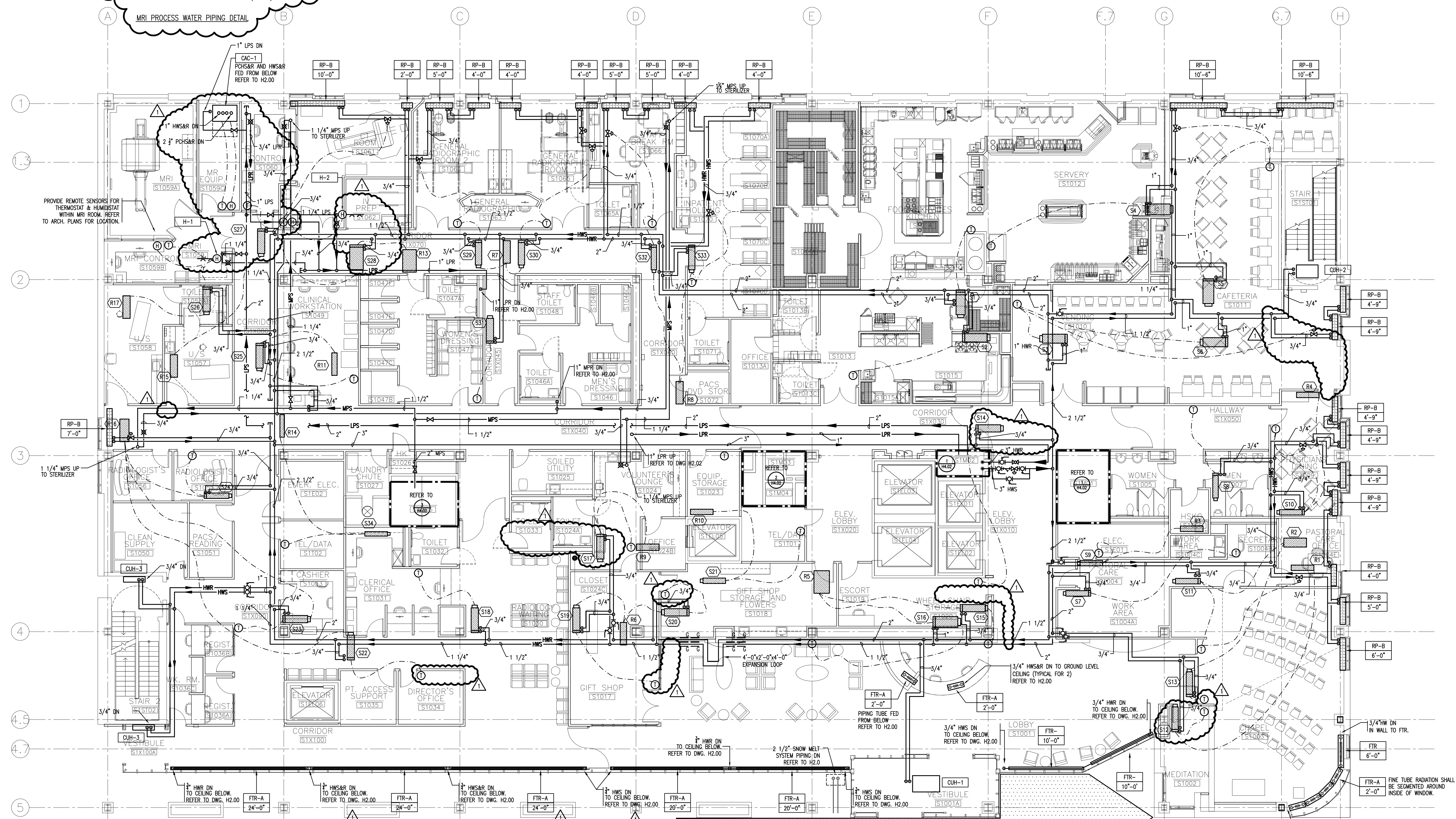
FORE RIVER SHORT
 STAY HOSPITAL



Project Number
 F05-4898

Drawing Title and Number
 HVAC
 PIPING
 LEVEL 1 PLAN

H2.01



S1	S2	S3	S4	S5	S6	S7	S8	S9	S10	S11	S12	S13	S14	S15	S16	S17	S18	S19	S20	S21	S22
CV-12	CV-12	CV-4	CV-16	CV-16	CV-14	CV-8	CV-8	W-6	W-6	W-6	W-6	W-6	W-6	W-6	W-6	W-6	W-6	W-6	W-6	W-6	W-6
1500	1500	1800	2000	2100	1800	375	475	200	275	400	125	500	1150	1400	2250	775	1200	300	250	200	200
4.9	4.9	5.9	6.6	6.9	5.9	1.2	0.8	NO COIL	0.9	1.3	0.4	1.7	3.8	4.6	7.4	2.5	4.0	1.0	0.8	NO COIL	NO COIL

S22	S23	S24	S25	S26	S27	S28	S29	S30	S31	S32	S33	S34
CV-12	WV-12	WV-10	CV-10	WV-12	CV-12	WV-19	WV-10	CV-14	WV-6	WV-12	W-6	W-6
1400	550	425	1000	750	975	1275	450	525	1800	200	550	200
4.6	1.8	1.4	3.2	2.5	3.1	4.2	1.5	1.7	5.9	0.7	1.8	NO COIL

R1	R2	R3	R4	R5	R6	R7	R8	R9	R10	R11	R12	R13	R14	R15	R16	R17
WR-10	WR-14	WR-6	WR-8	CVR-22	WR-12	WR-14	WR-12	CVR-8	WR-6	CVR-8	NOT USED	WR-19	WR-6	CV-12	WR-16	WR-12
725	1800	400	550	3250	1100	1400	475	400	500	500	2525	400	975	2300	1200	375
900	200	225	3250	550	550	700	475	200	500	500	1275	200	975	1150	600	600

1 FIRST FLOOR PLAN
 1/8" = 1'-0"