

Consultant  
 CIVIL ENGINEER  
 DeLuca-Hoffman Associates, Inc.  
 778 Main Street, Suite 8  
 South Portland, ME 04106  
 Phone: (207) 775-1121  
 Fax: (207) 879-0896

Consultant  
 ASSOCIATE ARCHITECT/STRUCTURAL ENGINEER  
 SMRT  
 144 Fore Street P.O. Box 618  
 Portland, Maine 04104  
 Phone: (207) 772-3846  
 Fax: (207) 772-1070

Consultant  
 MECHANICAL/ELECTRICAL ENGINEER  
 Bard, Rao + Athanas Consulting Engineers, LLC  
 The Arsenal on the Chimes  
 311 Arsenal Street  
 Watertown, MA 02472-5789  
 Phone: 617.254.0016  
 Fax: 617.924.9339

Consultant  
 EQUIPMENT PLANNING  
 Gene Burton & Associates  
 1893 General George Patton Drive  
 Franklin, Tennessee 37067  
 Phone: (615) 376-3100  
 Fax: (615) 376-3114

Consultant  
 CONSTRUCTION MANAGER  
 Gilbane Building Company  
 7 Jackson Walkway  
 Providence, Rhode Island 02903  
 Phone: (401) 456-5905  
 Fax: (401) 456-5516

Consultant  
 FOOD SERVICE  
 Inman Foodservice, LLC  
 1808 West End Ave, Suite 1400  
 Nashville, TN 37203  
 Phone: (615) 321-5591  
 Fax: (615) 321-5689

It is the responsibility of the Construction Manager/General Contractor and all Sub-Contractors to verify all dimensions and accept conditions of prior work by related trades before proceeding with any work.

Date  
 11/10/06 Final-Issued for Construction  
 Drawn By  
 DPB

Scale  
 1/8"=1'-0"

Francis

Cauffman

Foley

Hoffmann

Francis Cauffman  
 Francis Hoffmann  
 Architects Ltd.

Project Title  
 Mercy at the Fore Hospital

Mercy Health Care  
 System of Maine

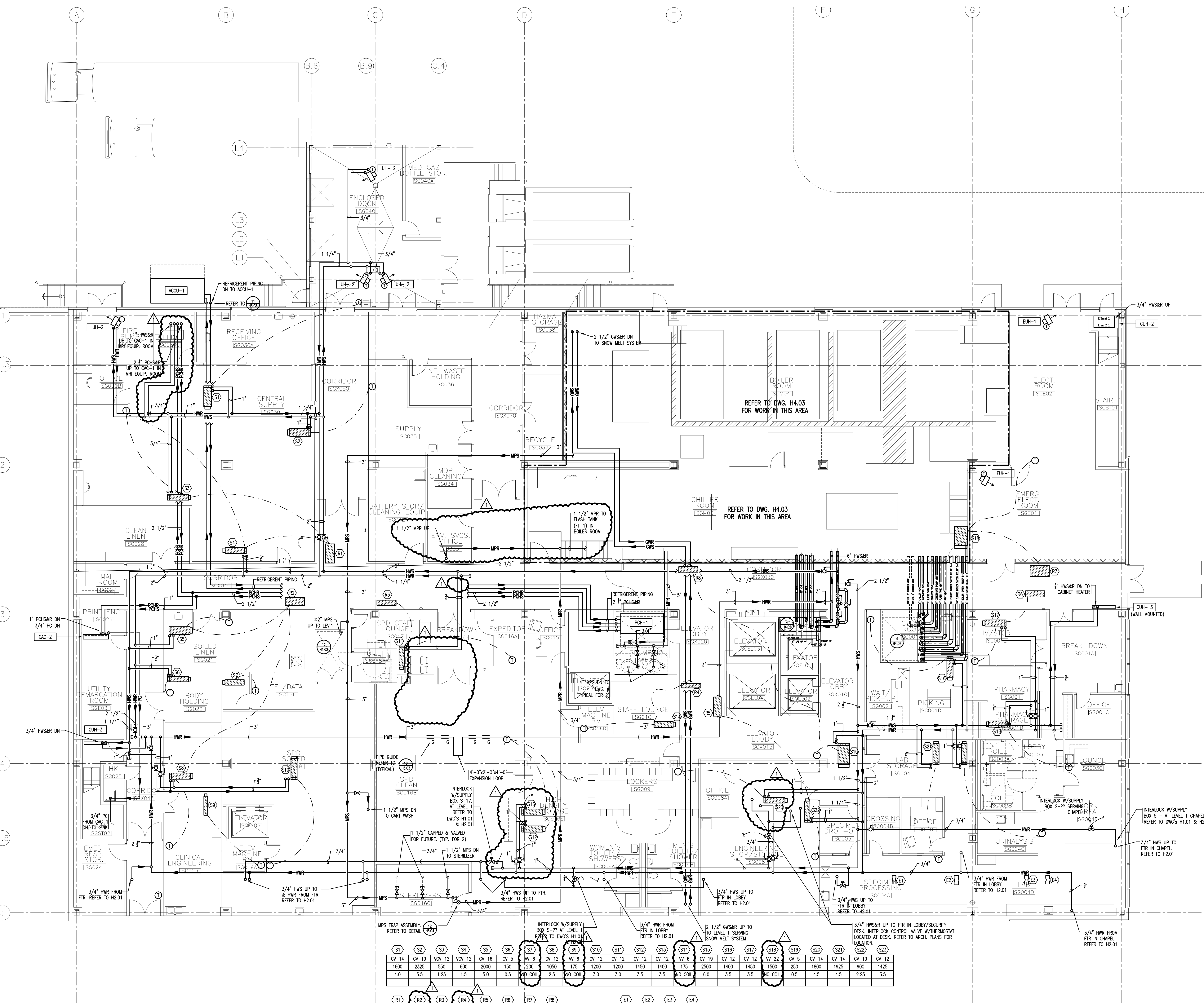
FORE RIVER SHORT  
 STAY HOSPITAL



Project Number  
 F05-4898

Drawing Title and Number  
 HVAC  
 PIPING  
 GROUND LEVEL PLAN

H2.00



1 GROUND FLOOR PLAN  
 A1.00 1/8" = 1'-0"

S1	S2	S3	S4	S5	S6	S7	S8	S9	S10	S11	S12	S13	S14	S15	S16	S17	S18	S19	S20	S21	S22	S23
CV-14	CV-19	VCV-12	CV-12	CV-16	CV-5	W-6	CV-12	W-6	CV-12	CV-12	CV-12	CV-12	W-6	CV-19	CV-12	CV-12	W-22	CV-5	CV-14	CV-14	CV-10	CV-12
1800	2325	550	600	2000	150	200	1050	175	1200	1200	1450	1400	175	2500	1400	1450	1500	250	1800	1925	900	1425
4.0	5.5	1.25	1.5	5.0	0.5	NO COIL	2.5	NO COIL	3.0	3.0	3.5	3.5	NO COIL	6.0	3.5	3.5	NO COIL	0.5	4.5	4.5	2.25	3.5

R1	R2	R3	R4	R5	R6	R7	R8
WR-16	WR-16	WR-12	WR-8	WR-14	WR-22	WR-12	WR-12
2300	950	1400	450	1350	1450	3000	1400
1150	1875	1400	225	675	1450	3000	1400

E1	E2	E3	E4
HV-1	CEAV-2	HV-2	CEAV-1
600	1525	800	1100
600	1525	800	1100

MERCY AT THE FORE HOSPITAL  
 FIRE RATING & U.L. DESIGN SCHEDULE  
 (Small text detailing fire ratings and design schedules for various components)