

Consultant  
 CIVIL ENGINEER  
 DeLuca-Hoffman Associates, Inc.  
 778 Main Street, Suite 8  
 South Portland, ME 04106  
 Phone: (207) 775-1121  
 Fax: (207) 879-0896

Consultant  
 ASSOCIATE ARCHITECT/STRUCTURAL ENGINEER  
 SMRT  
 144 Fore Street P.O. Box 618  
 Portland, Maine 04104  
 Phone: (207) 772-3846  
 Fax: (207) 772-1070

Consultant  
 MECHANICAL/ELECTRICAL ENGINEER  
 Board, Rao + Athanas Consulting Engineers, LLC  
 The Arsenal on the Charles  
 311 Arsenal Street  
 Watertown, MA 02472-5789  
 Phone: 617.254.0016  
 Fax: 617.924.9339

Consultant  
 EQUIPMENT PLANNING  
 Gene Burton & Associates  
 1893 General George Patton Drive  
 Franklin, Tennessee 37067  
 Phone: (615) 376-3100  
 Fax: (615) 376-3114

Consultant  
 CONSTRUCTION MANAGER  
 Gilbane Building Company  
 7 Jackson Walkway  
 Providence, Rhode Island 02903  
 Phone: (401) 456-5905  
 Fax: (401) 456-5516

Consultant  
 FOOD SERVICE  
 Inman Foodservice, LLC  
 1808 West End Ave. Suite 1400  
 Nashville, TN 37203  
 Phone: (615) 321-5591  
 Fax: (615) 321-5689

It is the responsibility of the Construction Manager/General Contractor and all Sub-Contractors to verify all dimensions and accept conditions of prior work by related trades before proceeding with any work.

Date  
 11/10/06 Final-Issued for Construction  
 Drawn By  
 FA

Scale  
 1/8"=1'-0"

Francis

Cauffman

Foley

Hoffmann

Francis Cauffman 2120 Arch Street  
 Foley Hoffmann Philadelphia, PA 19103  
 Architects Ltd. 215-568-8250

Project Title

Mercy Health Care System of Maine

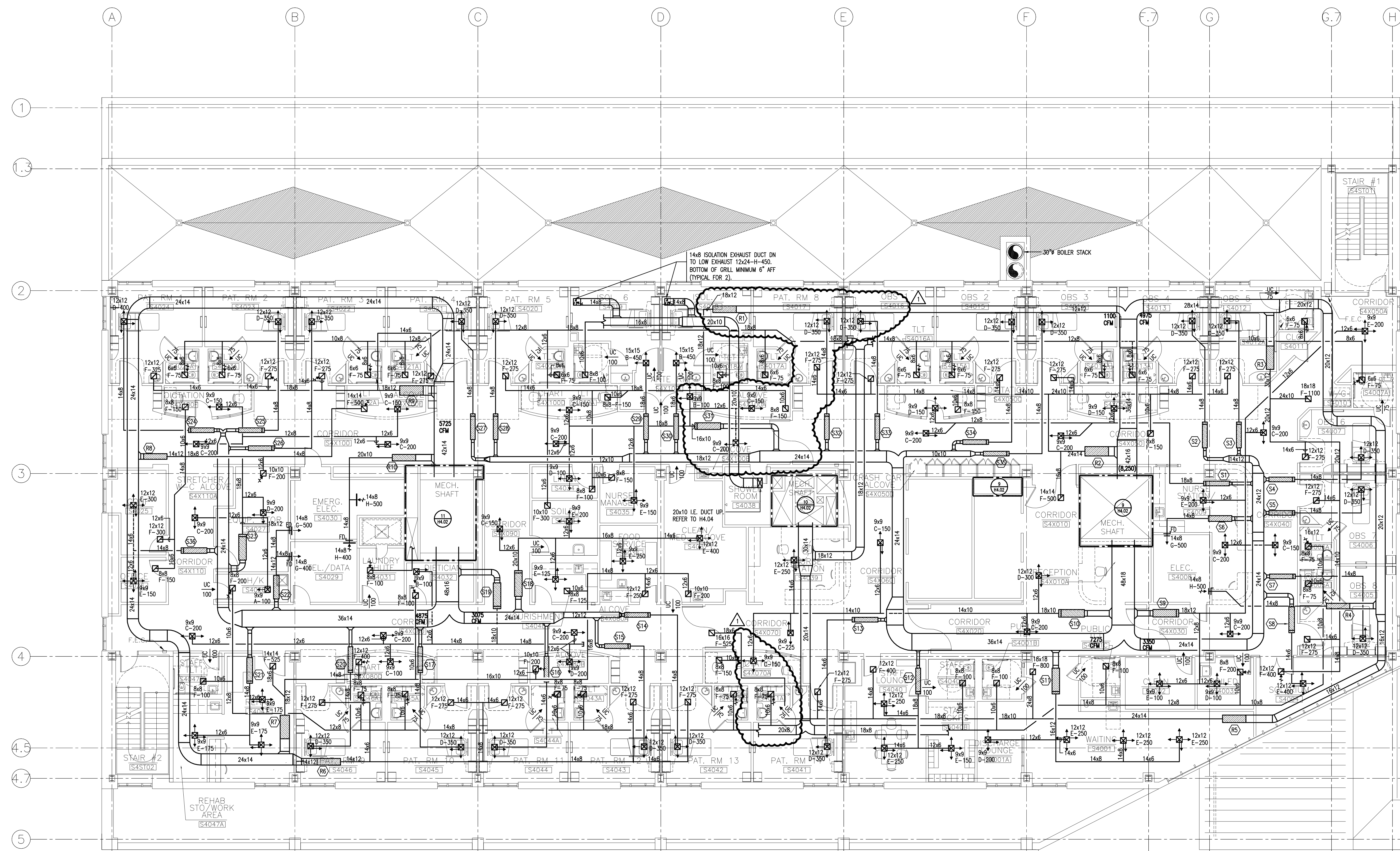
FORE RIVER SHORT STAY HOSPITAL



Project Number  
 F05-4898

Drawing Title and Number  
 HVAC DUCTWORK LEVEL 4 PLAN

H1.04



(S1)	(S2)	(S3)	(S4)	(S5)	(S6)	(S7)	(S8)	(S9)	(S10)	(S11)	(S12)	(S13)	(S14)	(S15)	(S16)	(S17)	(S18)	(S19)	(S20)	(S21)	(S22)	(S23)	(S24)	(S25)	(S26)	(S27)	(S28)	(S29)	(S30)	(S31)	(S32)	(S33)	(S34)	(S35)
CV-8	VCV-6	VCV-6	VCV-6	VCV-6	W-8	VCV-6	VCV-6	CV-12	CV-12	VCV-10	VCV-8	VCV-6	VCV-6	VCV-6	VCV-6	VCV-6	VCV-6	VCV-6	VCV-6	VCV-6	W-10	CV-12	VCV-6	VCV-6	VCV-6	VCV-6	VCV-6	VCV-6	VCV-6	VCV-6	VCV-6	VCV-6	VCV-6	VCV-8
700	350	350	350	350	500	350	400	1350	1275	950	650	350	350	350	350	1125	1000	350	525	900	1200	400	350	350	350	350	450	450	1050	350	350	350	425	
700	250	250	250	250	250	250	200	1350	1275	475	325	250	250	250	250	250	1125	1000	250	525	450	1200	250	250	250	250	450	450	1050	250	250	250	250	
-	-	-	-	-	-	-	-	-	-	-	-	-	-	-	-	-	-	-	-	-	NO COIL	-	-	-	-	-	-	-	-	-	-	-	-	

(R1)	(R2)	(R3)	(R4)	(R5)	(R6)	(R7)	(R8)	(R9)	(R10)
WR-12	WR-19	WR-19	WR-8	WR-19	WR-14	WR-12	WR-12	WR-12	WR-10
825	2400	2325	500	2150	1375	1800	1300	1150	900
425	1225	1175	250	1075	500	900	1300	425	450