

Consultant  
**CIVIL ENGINEER**  
 DeLuca-Hoffman Associates, Inc.  
 778 Main Street, Suite 8  
 South Portland, ME 04106  
 Phone: (207) 775-1121  
 Fax: (207) 879-0896

Consultant  
**ASSOCIATE ARCHITECT/STRUCTURAL ENGINEER**  
 SMRT  
 144 Fore Street P.O. Box 618  
 Portland, Maine 04104  
 Phone: (207) 772-3846  
 Fax: (207) 772-1070

Consultant  
**MECHANICAL/ELECTRICAL ENGINEER**  
 The Arsenal on the Charles  
 311 Arsenal Street  
 Watertown, MA 02472-5789  
 Phone: 617.254.0016  
 Fax: 617.924.9339

Consultant  
**EQUIPMENT PLANNING**  
 Gene Burton & Associates  
 1893 General George Patton Drive  
 Franklin, Tennessee 37067  
 Phone: (615) 376-3100  
 Fax: (615) 376-3114

Consultant  
**CONSTRUCTION MANAGER**  
 Gilbane Building Company  
 7 Jackson Walkway  
 Providence, Rhode Island 02903  
 Phone: (401) 456-5905  
 Fax: (401) 456-5516

Consultant  
**FOOD SERVICE**  
 Inman Foodservice, LLC  
 1808 West End Ave. Suite 1400  
 Nashville, TN 37203  
 Phone: (615) 321-5591  
 Fax: (615) 321-5689

It is the responsibility of the Construction Manager/General Contractor and all Sub-Contractors to verify all dimensions and accept conditions of prior work by related trades before proceeding with any work.

Date  
 11/10/06 Final-Issued for Construction  
 Drawn By  
 FA  
 Scale  
 1/8"=1'-0"

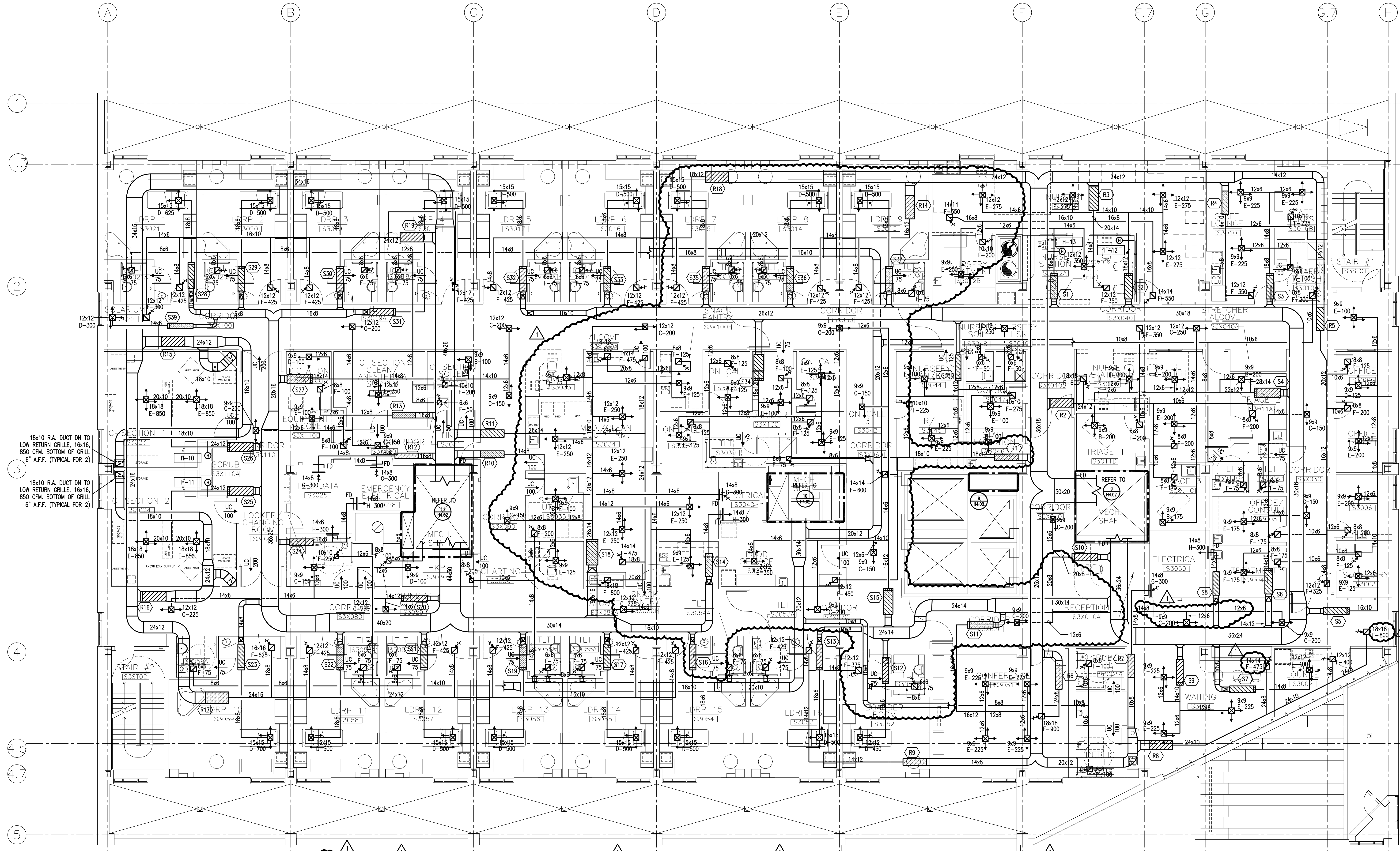
Francis  
 Cauffman  
 Foley  
 Hoffmann

Francis Cauffman 2120 Arch Street  
 Foley Hoffmann Philadelphia, PA 19103  
 Architects Ltd. 215-568-8250

Project Title  
 Mercy Health Care  
 System of Maine  
 FORE RIVER SHORT  
 STAY HOSPITAL



Project Number  
 F05-4898  
 Drawing Title and Number  
 HVAC  
 DUCTWORK  
 LEVEL 3 PLAN  
**H1.03**



18x10 R.A. DUCT ON TO LOW RETURN GRILLE, 16x16, 850 CFM. BOTTOM OF GRILL 6" A.F.F. (TYPICAL FOR 2)

18x10 R.A. DUCT ON TO LOW RETURN GRILLE, 16x16, 850 CFM. BOTTOM OF GRILL 6" A.F.F. (TYPICAL FOR 2)

S1	S2	S3	S4	S5	S6	S7	S8	S9	S10	S11	S12	S13	S14	S15	S16	S17	S18	S19	S20	S21	S22	S23	S24	S25	S26	S27	S28	S29	S30	S31	S32	S33	S34	S35	S36	S37	S38	S39					
VCV-8	VCV-12	CV-10	VCV-14	VCV-10	CV-8	VCV-8	W-6	VCV-8	CV-10	VCV-10	VCV-8	VCV-8	CV-6	CV-12	VCV-8	VCV-8	VCV-18	VCV-8	CV-10	VCV-8	VCV-8	VCV-8	VCV-8	VCV-14	VCV-14	VCV-12	VCV-8	VCV-8	VCV-8	VCV-8	VCV-8	VCV-8	VCV-8	VCV-8	VCV-8	VCV-8	VCV-10	VCV-8					
550	1100	775	1425	750	650	400	300	675	800	900	450	225	400	300	1050	400	400	2425	500	700	500	500	500	500	1700	1700	1250	250	250	250	250	250	250	250	250	250	250	300	300				
275	550	775	725	375	650	200	150	350	800	450	225	400	300	1050	400	400	1225	400	700	400	400	550	300	850	850	825	250	250	250	250	250	250	250	250	250	250	250	250	250	300	300		
R1	R2	R3	R4	R5	R6	R7	R8	R9	R10	R11	R12	R13	R14	R15	R16	R17	R18	R19																									
WR-16	WR-14	WR-14	WR-8	WR-12	WR-10	WR-8	WR-14	WR-10	WR-8	WR-8	WR-8	WR-8	WR-10	WR-14	WR-14	WR-14	WR-12	WR-14																									
2150	1675	1650	675	1325	900	300	1675	675	300	2475	600	600	850	1600	1600	2550	1275	1575																									
1075	850	825	675	675	450	150	1250	575	300	1250	300	300	425	800	800	1275	650	800																									