

- Consultant  
 CIVIL ENGINEER  
 DeLuca-Hoffman Associates, Inc.  
 778 Main Street, Suite 8  
 South Portland, ME 04106  
 Phone: (207) 775-1121  
 Fax: (207) 879-0896
- Consultant  
 ASSOCIATE ARCHITECT/STRUCTURAL ENGINEER  
 SMRT  
 144 Fore Street P.O. Box 618  
 Portland, Maine 04104  
 Phone: (207) 772-3846  
 Fax: (207) 772-1070
- Consultant  
 MECHANICAL/ELECTRICAL ENGINEER  
 The Arsenal on the Charles  
 311 Arsenal Street  
 Watertown, MA 02472-5789  
 Phone: 617.254.0016  
 Fax: 617.924.9339
- Consultant  
 EQUIPMENT PLANNING  
 Gene Burton & Associates  
 1893 General George Patton Drive  
 Franklin, Tennessee 37067  
 Phone: (615) 376-5100  
 Fax: (615) 376-3114
- Consultant  
 CONSTRUCTION MANAGER  
 Gilbane Building Company  
 7 Jackson Walkway  
 Providence, Rhode Island 02903  
 Phone: (401) 456-5905  
 Fax: (401) 456-5516
- Consultant  
 FOOD SERVICE  
 Inman Foodservice, LLC  
 1808 West End Ave. Suite 1400  
 Nashville, TN 37203  
 Phone: (615) 321-5591  
 Fax: (615) 321-5689

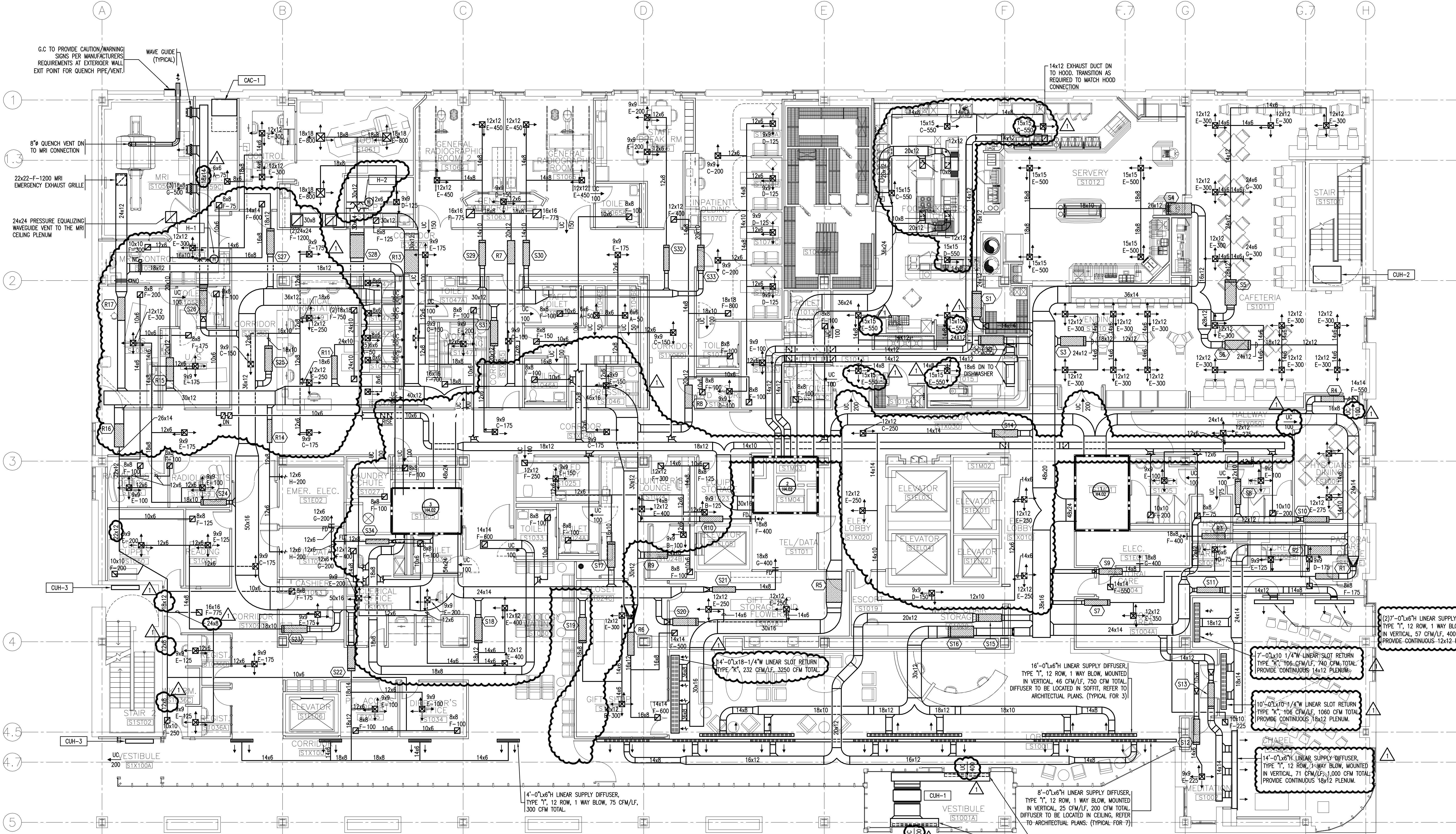
It is the responsibility of the Construction Manager/General Contractor and all Sub-Contractors to verify all dimensions and accept conditions of prior work by related trades before proceeding with any work.

Date  
 11/10/06 Final-Issued for Construction  
 Drawn by  
 DPB  
 Scale  
 1/8"=1'-0"

Francis  
 Cauffman  
 Foley  
 Hoffmann  
 Francis Cauffman Architects Ltd.  
 2120 Arch Street  
 Philadelphia, PA 19103  
 215-568-8250

Project Title  
 Mercy Health Care  
 System of Maine  
 FORE RIVER SHORT  
 STAY HOSPITAL

Project Number  
 F05-4898  
 Drawing Title and Number  
 HVAC  
 DUCTWORK  
 LEVEL 1 PLAN  
**H1.01**



S1	S2	S3	S4	S5	S6	S7	S8	S9	S10	S11	S12	S13	S14	S15	S16	S17	S18	S19	S20	S21	S22	S23	S24	S25	S26	S27	S28	S29	S30	S31	S32	S33	S34
VCV-16	VCV-16	VCV-4	VCV-16	VCV-16	VCV-14	VCV-8	CV-8	W-6	VCV-8	VCV-10	VCV-8	VCV-10	CV-12	CV-12	CV-19	CV-10	CV-12	VCV-8	VCV-8	W-6	VCV-12	VCV-10	CV-10	CV-12	VCV-19	VCV-10	VCV-12	CV-14	VCV-6	VCV-12	W-6		
2200	2200	1800	2000	2100	1800	725	475	400	550	800	225	1000	1150	1400	2250	775	1200	600	500	400	1400	1100	850	1000	1500	975	2525	900	1050	1800	400	1100	400
1100	1100	900	1000	1050	900	375	475	200	275	400	125	500	1150	1400	2250	775	1200	300	250	200	700	550	425	1000	750	1275	450	525	1800	200	550	200	
R1	R2	R3	R4	R5	R6	R7	R8	R9	R10	R11	R12	R13	R14	R15	R16	R17																	
WR-10	WR-14	WR-6	WR-16	CVR-22	WR-14	WR-14	WR-14	WR-8	WR-8	WR-8	WR-8	WR-8	WR-8	WR-8	WR-8	WR-8																	
725	1800	400	550	3250	1100	1100	1400	475	400	500	USED	2525	400	975	2300	1200																	
375	800	200	225	3250	550	550	700	475	200	500		1275	400	975	1150	800																	

1 FIRST FLOOR PLAN  
 A1.01 1/8" = 1'-0"