

Consultant  
 CIVIL ENGINEER  
 DeLuca-Hoffman Associates, Inc.  
 778 Main Street, Suite 8  
 South Portland, ME 04106  
 Phone: (207) 775-1121  
 Fax: (207) 879-0896

Consultant  
 ASSOCIATE ARCHITECT/STRUCTURAL ENGINEER  
 SMRT  
 144 Fore Street P.O. Box 618  
 Portland, Maine 04104  
 Phone: (207) 772-3846  
 Fax: (207) 772-1070

Consultant  
 MECHANICAL/ELECTRICAL ENGINEER  
 The Arsenal on the Charles  
 311 Arsenal Street  
 Watertown, MA 02472-5789  
 Phone: 617.254.0018  
 Fax: 617.924.9339

Consultant  
 EQUIPMENT PLANNING  
 Gene Burton & Associates  
 1893 General George Patton Drive  
 Franklin, Tennessee 37067  
 Phone: (615) 376-3100  
 Fax: (615) 376-3114

Consultant  
 CONSTRUCTION MANAGER  
 Gilbane Building Company  
 7 Jackson Walkway  
 Providence, Rhode Island 02903  
 Phone: (401) 456-5900  
 Fax: (401) 456-5516

Consultant  
 FOOD SERVICE  
 Inman Foodservice, LLC  
 1808 West End Ave, Suite 1400  
 Nashville, TN 37203  
 Phone: (615) 321-5591  
 Fax: (615) 321-5689

It is the responsibility of the Construction Manager/General Contractor and all Sub-Contractors to verify all dimensions and accept conditions of prior work by related trades before proceeding with any work.

Date  
 11/10/06 Final-Issued for Construction

Drawn By  
 REC

Scale  
 1/8" = 1'-0"

Francis  
 Cauffman

Foley

Hoffmann

Francis Cauffman 2120 Arch Street  
 Foley Hoffmann Philadelphia, PA 19103  
 Architects Ltd. 215-568-8250

Project Title  
 Mercy Health Care  
 System of Maine

FORE RIVER SHORT  
 STAY HOSPITAL

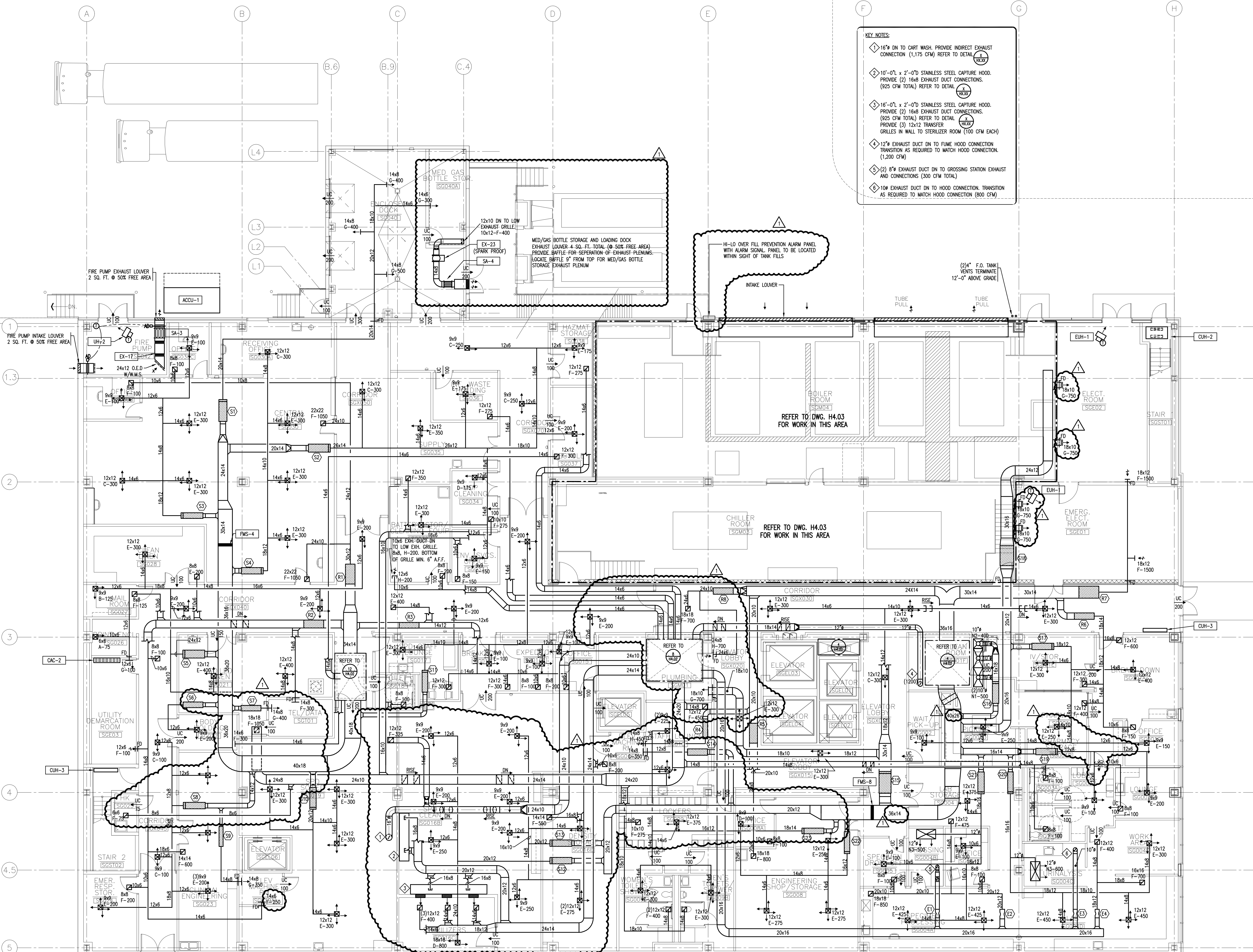


Project Number  
 F05-4898

Drawing Title and Number  
 HVAC  
 DUCTWORK  
 GROUND LEVEL PLAN

H1.00

- KEY NOTES:
- 1 16" DN TO CART WASH. PROVIDE INDIRECT EXHAUST CONNECTION (1,175 CFM) REFER TO DETAIL (S14)
  - 2 10'-0" x 2'-0" STAINLESS STEEL CAPTURE HOOD. PROVIDE (2) 16" EXHAUST DUCT CONNECTIONS. (925 CFM TOTAL) REFER TO DETAIL (S13)
  - 3 16'-0" x 2'-0" STAINLESS STEEL CAPTURE HOOD. PROVIDE (2) 16" EXHAUST DUCT CONNECTIONS. (925 CFM TOTAL) REFER TO DETAIL (S13)
  - 4 12" EXHAUST DUCT DN TO FUME HOOD CONNECTION TRANSITION AS REQUIRED TO MATCH HOOD CONNECTION. (1,200 CFM)
  - 5 (2) 8" EXHAUST DUCT DN TO CROSSING STATION EXHAUST AND CONNECTIONS (300 CFM TOTAL)
  - 6 10" EXHAUST DUCT DN TO HOOD CONNECTION. TRANSITION AS REQUIRED TO MATCH HOOD CONNECTION (800 CFM)



1 GROUND FLOOR PLAN  
 A1.00 1/8" = 1'-0"

(S1)	(S2)	(S3)	(S4)	(S5)	(S6)	(S7)	(S8)	(S9)	(S10)	(S11)	(S12)	(S13)	(S14)	(S15)	(S16)	(S17)	(S18)	(S19)	(S20)	(S21)	(S22)	(S23)
CV-14	CV-19	WCY-12	WCY-12	CV-16	CV-5	W-6	CV-12	W-6	CV-12	CV-12	CV-12	CV-12	W-6	CV-19	CV-12	CV-12	W-22	CV-5	CV-14	CV-14	CV-12	
1600	2325	1100	1200	2000	150	400	1200	1200	1450	1400	1450	1400	175	2500	1400	1450	3000	250	1800	1925	900	1425
1600	2325	550	600	2000	150	200	1050	175	1200	1200	1450	1400	175	2500	1400	1450	1500	250	1800	1925	900	1425
					NO COIL								NO COIL									
(R1)	(R2)	(R3)	(R4)	(R5)	(R6)	(R7)	(R8)															
WR-16	WR-16	CVR-12	WR-8	WR-14	CVR-12	CVR-22	CVR-12															
2300	1875	1400	450	900	1450	3000	1400															
1150	950	1400	225	450	1450	3000	1400															
(E1)	(E2)	(E3)	(E4)																			
HV-1	CEAV-2	HV-2	CEAV-1																			
600	1525	800	1100																			
600	1525	800	1100																			

MERCY AT THE FORE RIVER HOSPITAL  
 FORE RIVER STAY HOSPITAL  
 FORE RIVER STAY HOSPITAL  
 FORE RIVER STAY HOSPITAL  
 FORE RIVER STAY HOSPITAL