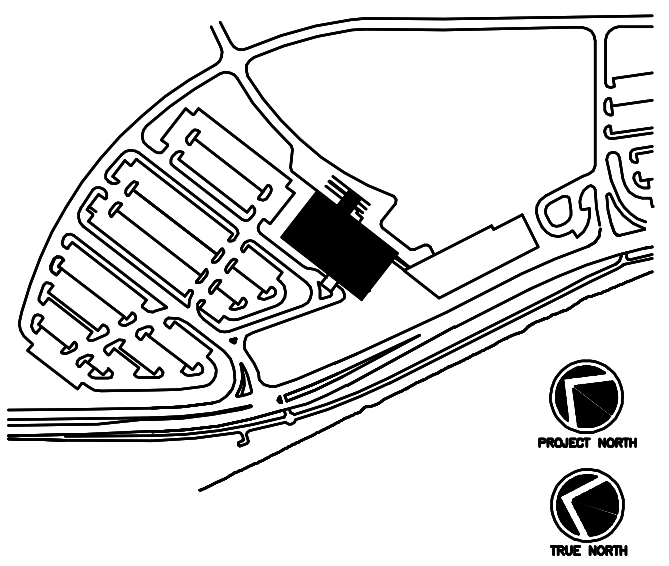
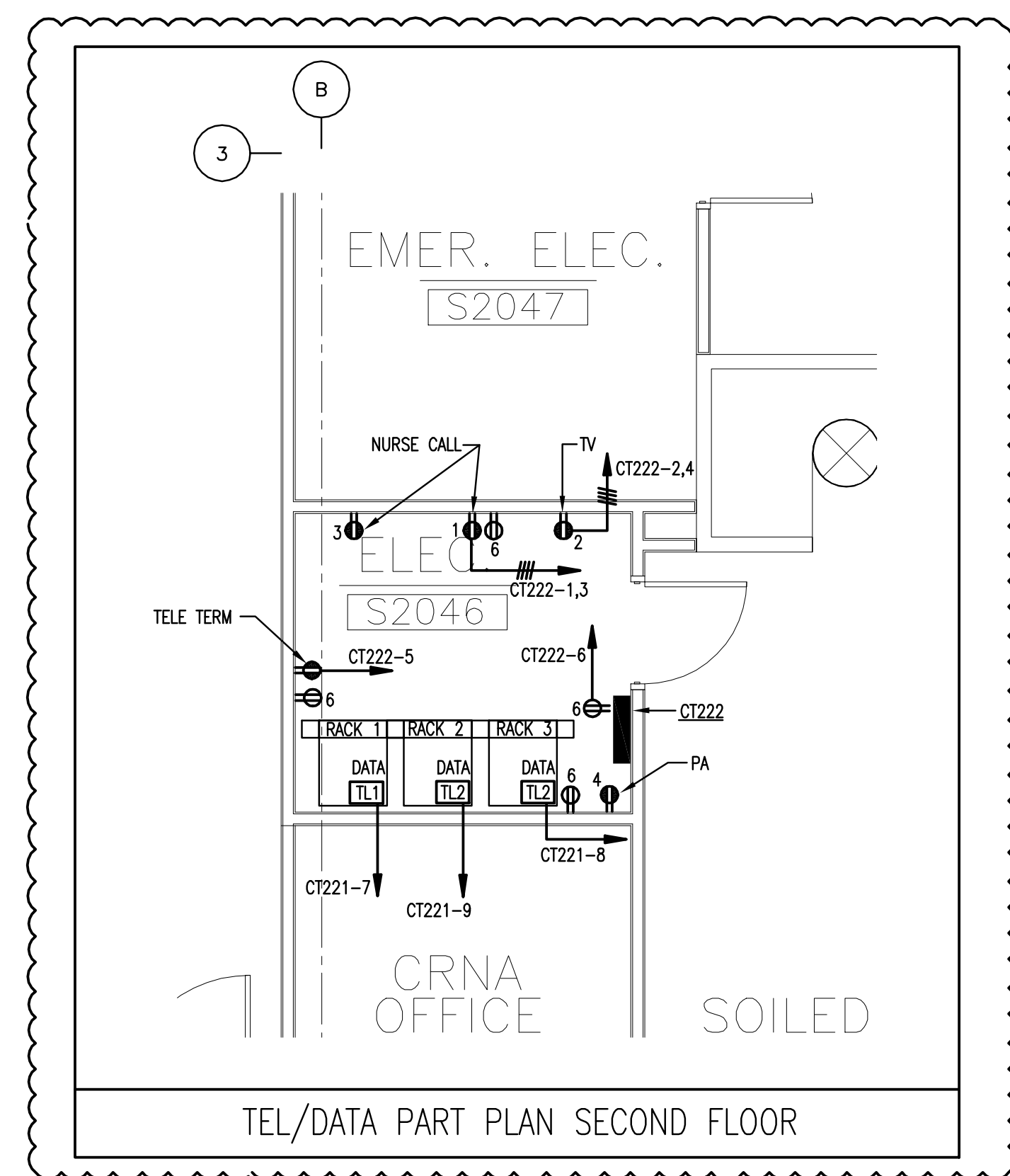
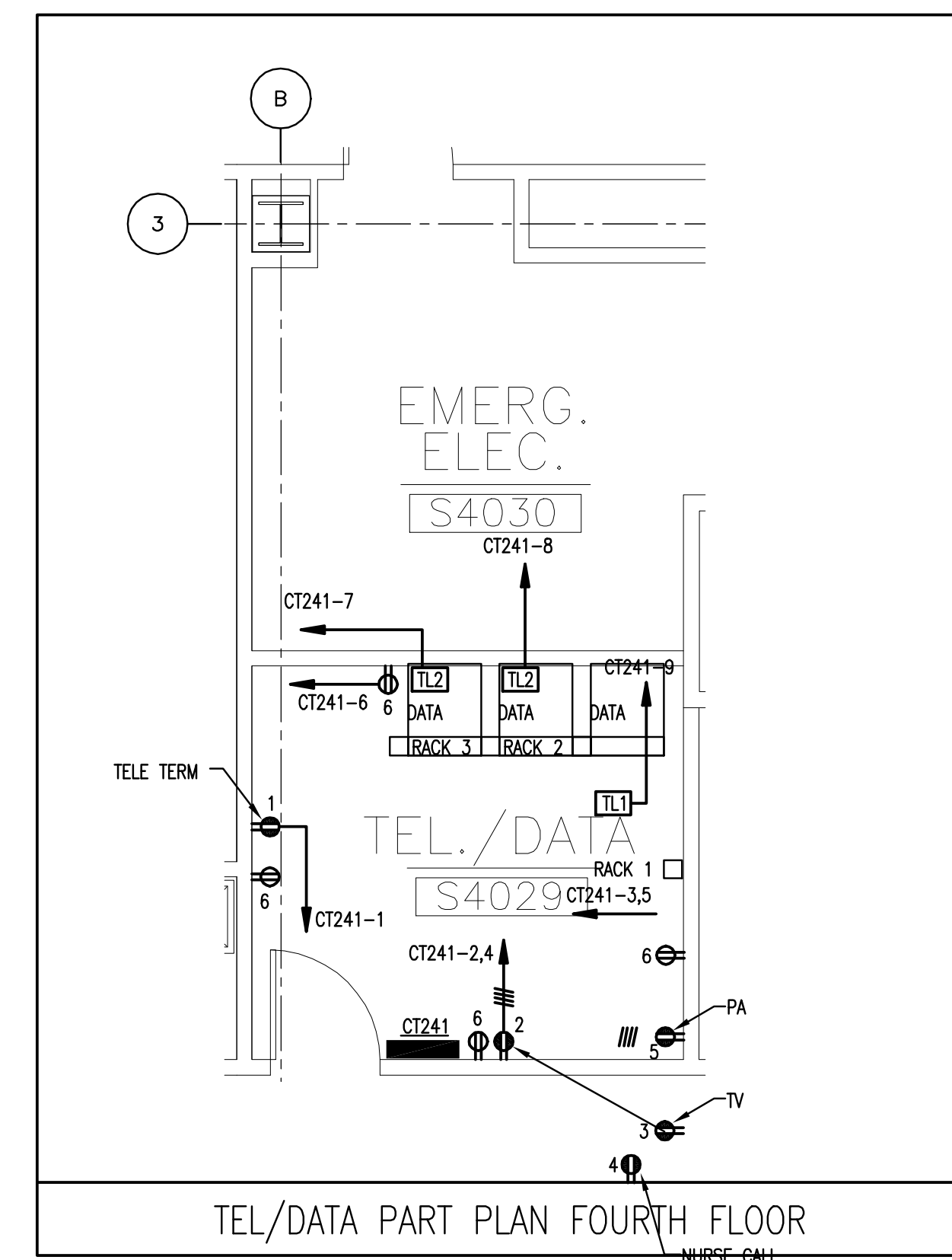
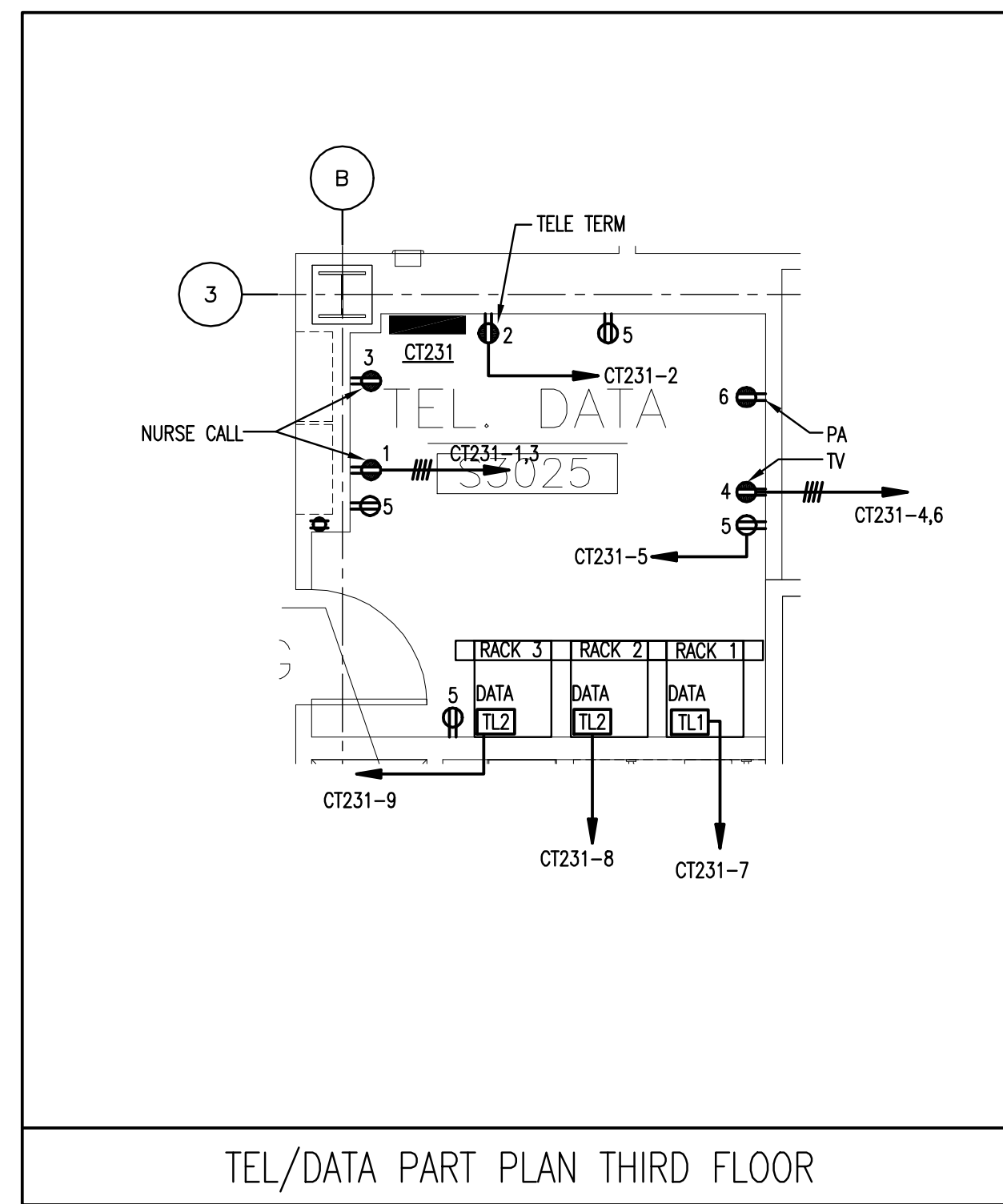
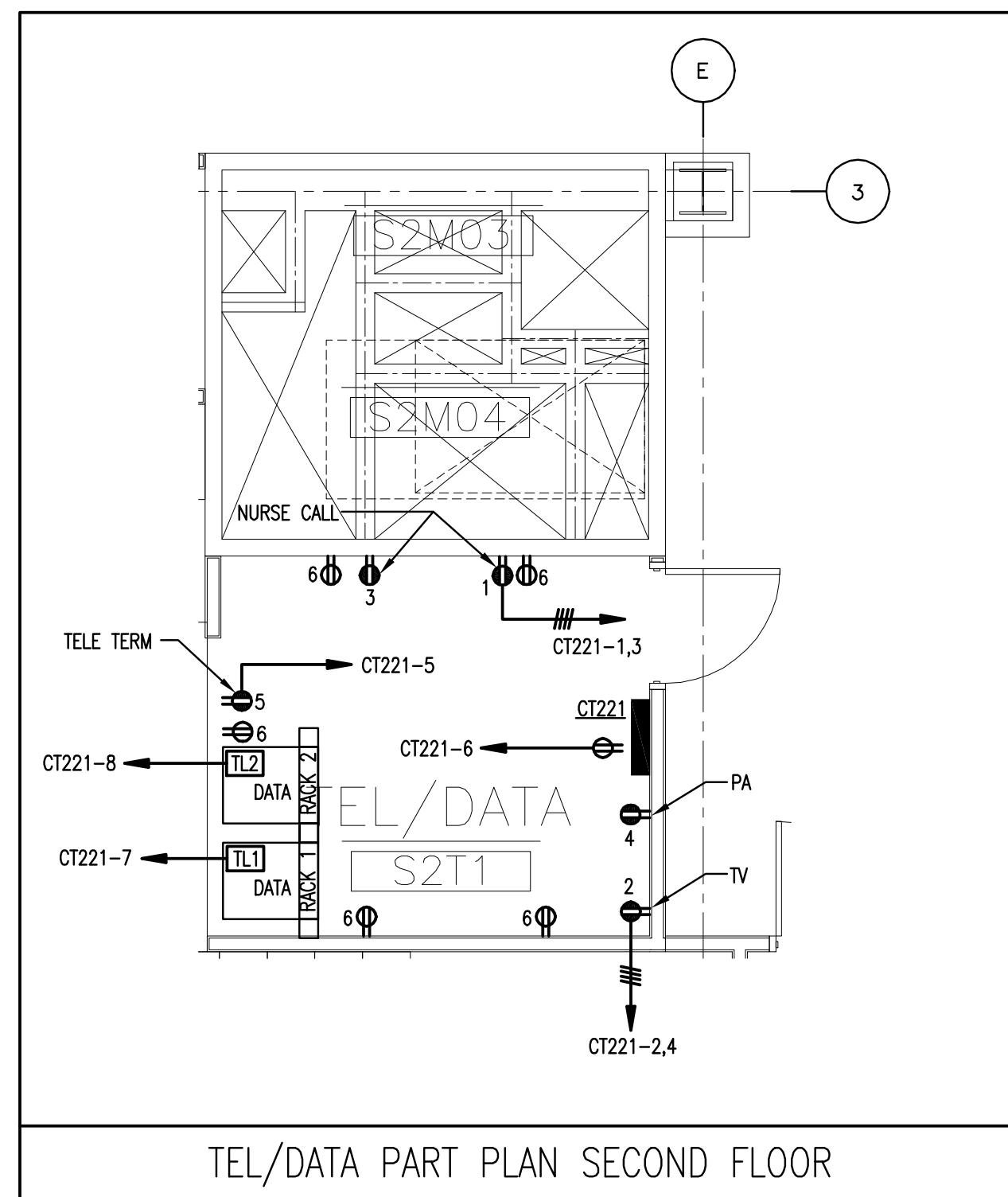


| COMM. ROOM RECEPTACLE / BRANCH CIRCUIT SCHEDULE | | | | |
|---|---|--------------------|----------------|-----------------------|
| SYMBOL | DESCRIPTION | NEMA CONFIGURATION | BRANCH CIRCUIT | |
| | | | BREAKER | BRANCH CIRCUIT WIRING |
| TL1 | 20A-120V-1Ø TWIST LOCK RECEPTACLE | L5-2ØR | 20A-1P | 2Ø12 & 1Ø120-3/4"Ø |
| TL2 | 3ØA-2ØØV-1Ø TWIST LOCK RECEPTACLE NEMA | L6-3ØR | 3ØA-2P | 2Ø10 & 1Ø100-3/4"Ø |
| LB1 | JUNCTION BOX FOR 3ØA DIRECT CONNECTION TO PBX CAB | | 3ØA-2P | 2Ø10 & 1Ø100-3/4"Ø |
| LB2 | JUNCTION BOX FOR 3ØA DIRECT CONNECTION TO PBX UPS | | 3ØA-3P | 3Ø10 & 1Ø100-3/4"Ø |

NOTES

- POWER OUTLETS SHALL BE MOUNTED ON BOTTOM OF HORIZONTAL CABLE TRAY. EXACT LOCATION SHALL BE COORDINATED WITH RACK/CABINET SERVED.
- ALL CABLE TRAY SHALL BE FURNISHED AND INSTALLED BY ELECTRICAL CONTRACTOR.



Consultant
 CIVIL ENGINEER
 DeLuca-Hoffman Associates, Inc.
 776 Main Street, Suite 8
 South Portland, ME 04106
 Phone: (207) 775-1121
 Fax: (207) 879-0896

Consultant
 ASSOCIATE ARCHITECT/STRUCTURAL ENGINEER
 SMRT
 144 Fore Street P.O. Box 618
 Portland, Maine 04104
 Phone: (207) 772-3846
 Fax: (207) 772-1070

Consultant
 MECHANICAL/ELECTRICAL ENGINEER
 The Arsenal on the Charles
 311 Arsenal Street
 Watertown, MA 02472-5789
 Phone: 617.254.0018
 Fax: 617.924.9339

Consultant
 EQUIPMENT PLANNING
 Gene Burton & Associates
 Silbans Building Company
 1893 General George Patton Drive
 Franklin, Tennessee 37067
 Phone: (615) 376-3100
 Fax: (615) 376-3114

Consultant
 CONSTRUCTION MANAGER
 Silbans Building Company
 7 Jackson Walkway
 Providence, Rhode Island 02903
 Phone: (401) 456-5905
 Fax: (401) 456-5516

Consultant
 FOOD SERVICE
 Inman Foodservice, LLC
 1808 West End Ave, Suite 1400
 Nashville, TN 37203
 Phone: (615) 321-5591
 Fax: (615) 321-5689

It is the responsibility of the Construction Manager/General Contractor and all Sub-Contractors to verify all dimensions and accept conditions of prior work by related trades before proceeding with any work.

Date
 11/10/06 Final-Issued for Constructio
 Drawn By

Scale
 1/4" = 1'-0"

Francis

Cauffman

Foley

Hoffmann

Francis Cauffman 2120 Arch Street
 Foley Hoffmann Philadelphia, PA 19103
 Architects Ltd. 215-568-8250

Project Title

Mercy Health Care
 System of Maine

FORE RIVER SHORT
 STAY HOSPITAL



Project Number
 F05-4898

Drawing Title and Number
 ELECTRICAL
 TEL/DATA
 PART PLANS

E6-7