

Consultant
 CIVIL ENGINEER
 DeLuca-Hoffman Associates, Inc.
 778 Main Street, Suite 8
 South Portland, ME 04106
 Phone: (207) 775-1121
 Fax: (207) 879-0896

Consultant
 ASSOCIATE ARCHITECT/STRUCTURAL ENGINEER
 SMRT
 144 Fore Street P.O. Box 618
 Portland, Maine 04104
 Phone: (207) 772-3846
 Fax: (207) 772-1070

Consultant
 MECHANICAL/ELECTRICAL ENGINEER
 The Arsenal on the Charles
 311 Arsenal Street
 Watertown, MA 02472-5789
 Phone: 617-254-0016
 Fax: 617-924-9339

Consultant
 EQUIPMENT PLANNING
 Gene Burton & Associates
 1893 General George Patton Drive
 Franklin, Tennessee 37067
 Phone: (615) 376-3100
 Fax: (615) 376-3114

Consultant
 CONSTRUCTION MANAGER
 Gilbane Building Company
 7 Jackson Walkway
 Providence, Rhode Island 02903
 Phone: (401) 456-5905
 Fax: (401) 456-5516

Consultant
 FOOD SERVICE
 Inman Foodservice, LLC
 1808 West End Ave, Suite 1400
 Nashville, TN 37203
 Phone: (615) 321-5591
 Fax: (615) 321-5688

It is the responsibility of the Construction Manager/General Contractor and all Sub-Contractors to verify all dimensions and accept conditions of prior work by related trades before proceeding with any work.

Date
 11/10/06 Final-Issued for Construction
 Drawn By

Scale
 1/8" = 1'-0"

Francis

Cauffman

Foley

Hoffmann

Francis Cauffman
 Foley Hoffmann
 Architects Ltd. 2120 Arch Street
 Philadelphia, PA 19103
 215-568-8250

Project Title

Mercy Health Care
 System of Maine

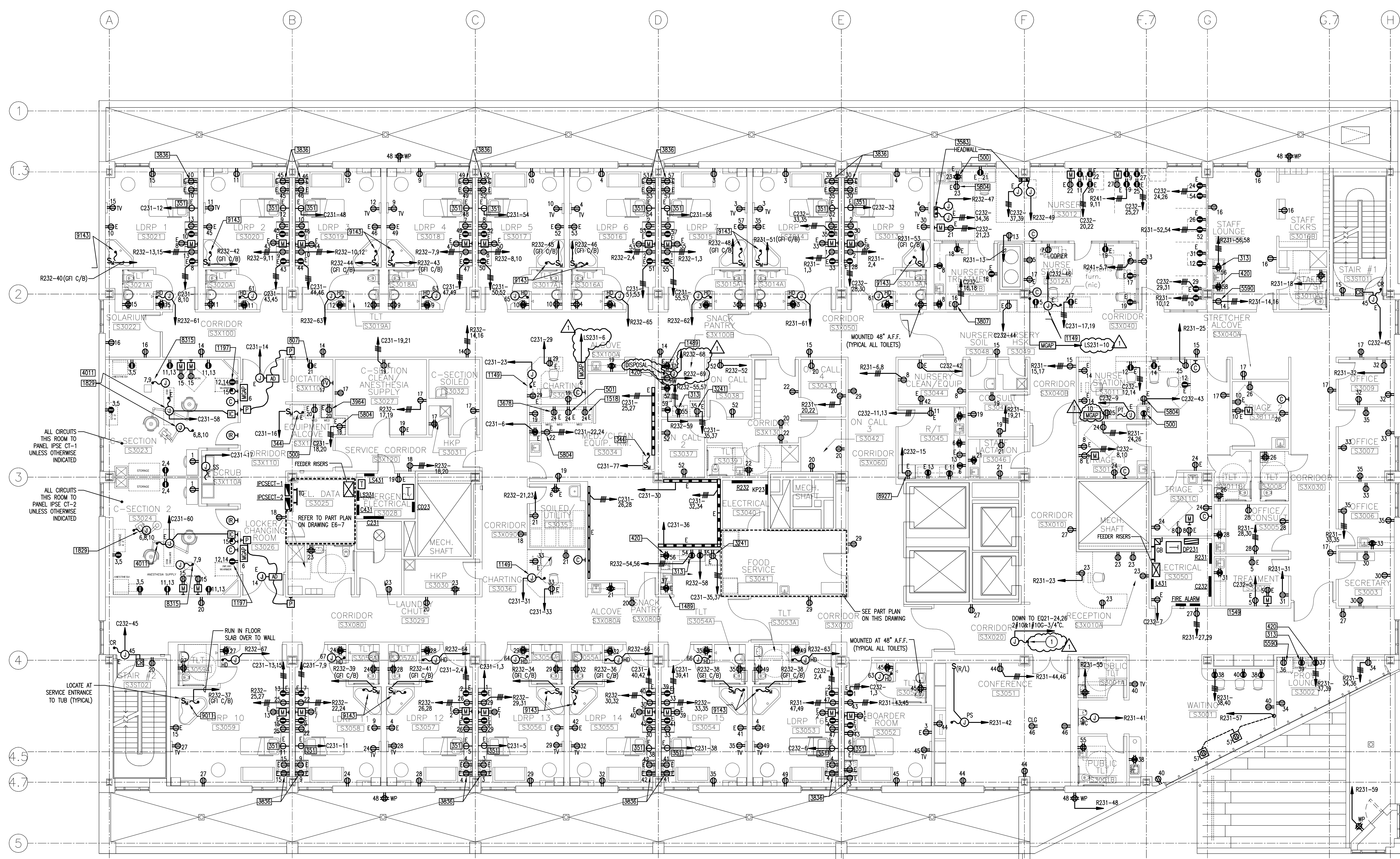
FORE RIVER SHORT
 STAY HOSPITAL



Project Number
 F05-4898

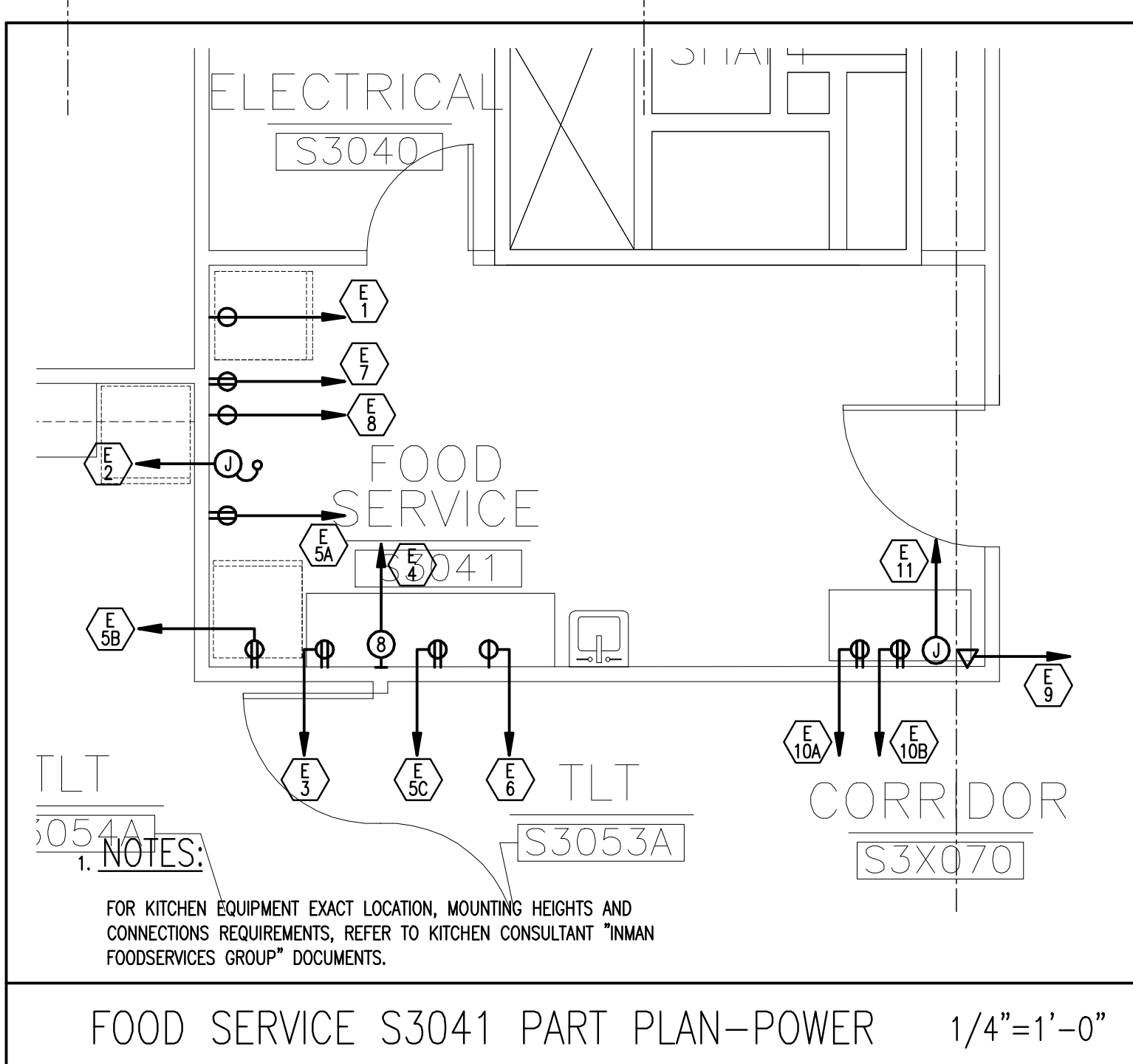
Drawing Title and Number
 ELECTRICAL
 POWER PLAN
 LEVEL 3

E1-3



KEY NOTES:
 1 PROVIDE A JUNCTION BOX WITH EMERGENCY CIRCUITS FOR USE BY THE ATC CONTRACTOR. COORDINATE LOCATION WITH ATC.

FOOD SERVICE S3041-SCHEDULE OF EQUIPMENT									
ITEM	DESCRIPTION	LOAD HP KW	AMP	VOLTAGE	CIRCUIT BREAKER	CONNECTION PLUG-IN DIRECT	PANEL/ CIRCUIT (ST)	FEEDER & CONDUIT	NOTES
E1	REFRIGERATOR/FREEZER	1/5-1/3	14A	120V	20A-1P	●	C231-76	2#12 & 1#126-3/4"	
E2	ICE/WATER DISPENSER	-	12A	120V	20A-1P	●	C231-78	2#12 & 1#126-3/4"	
E3	ICED TEA BREWER	-	15A	120V	30A-1P	●	KP23-1	2#12 & 1#126-3/4"	
E4	COFFEE BREWER	-	30A	120/208-1#	30A-2P	●	KP23-2,4	3#10 & 1#106-3/4"	
ESA	CONVENIENCE OUTLET	-	16A	120V	20A-1P	●	KP23-3	2#12 & 1#126-3/4"	
ESB	CONVENIENCE OUTLET	-	16A	120V	20A-1P	●	KP23-5	2#12 & 1#126-3/4"	
ESC	CONVENIENCE OUTLET	-	16A	120V	20A-1P	●	K23-10	2#12 & 1#126-3/4"	
E6	MICROWAVE OVEN	-	1.2	10A	20A-1P	●	KP23-7	2#12 & 1#126-3/4"	
E7	SODA DISPENSER	-	10A	120V	20A-1P	●	KP23-9	2#12 & 1#126-3/4"	
E8	AMBIENT CARBONATOR	-	7A	120V	20A-1P	●	KP23-11	2#12 & 1#126-3/4"	
E9	REFER TO COMMUNICATION DRAWINGS								
E10A	CONVENIENCE OUTLET	-	16A	120V	20A-1P	●	KP23-6	2#12 & 1#126-3/4"	
E10B	CONVENIENCE OUTLET	-	16A	120V	20A-1P	●	KP23-8	2#12 & 1#126-3/4"	
E11	E.C. TO PROVIDE EMPTY CONDUIT W/JUNCTION BOX FOR OWNER SUPPLIED POS/COMPUTER SYSTEM. VERIFY REQUIREMENTS AND LOCATION WITH OWNER/ARCH.								



J:\JOBS\1523000\DWG\ELEC\ONE-PWR-LEVEL 3.DWG 11-20-2006 11:32:00 - .lwd