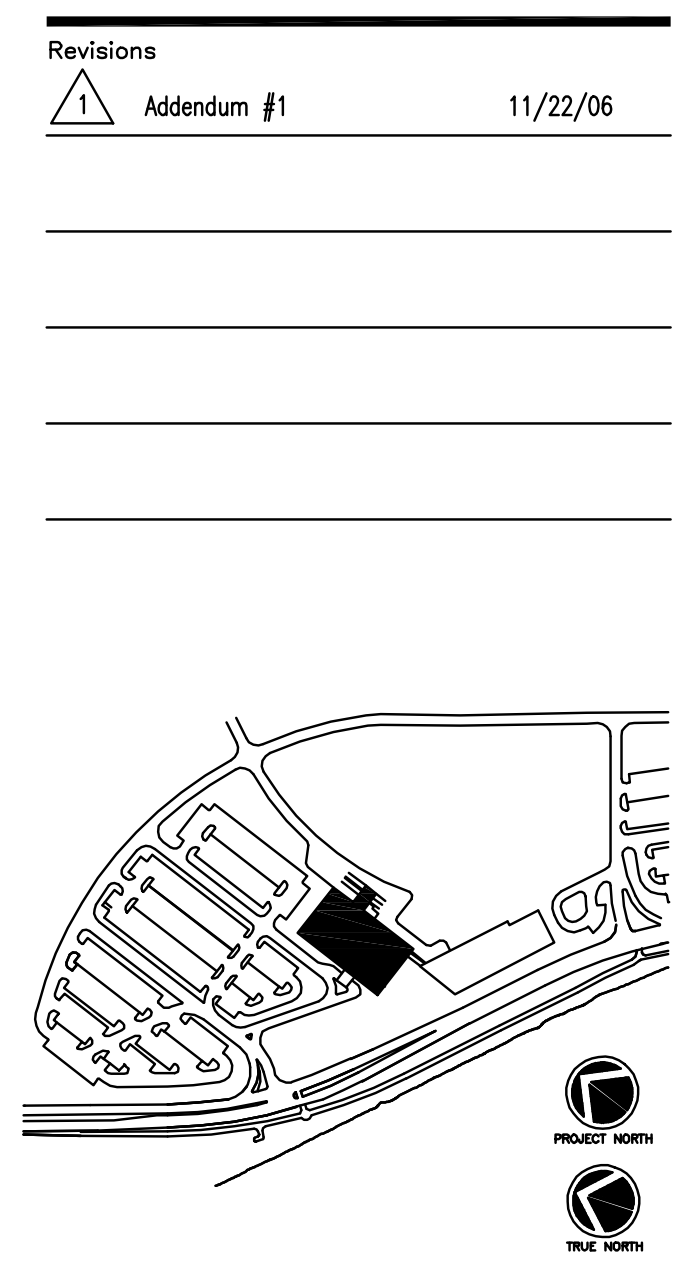
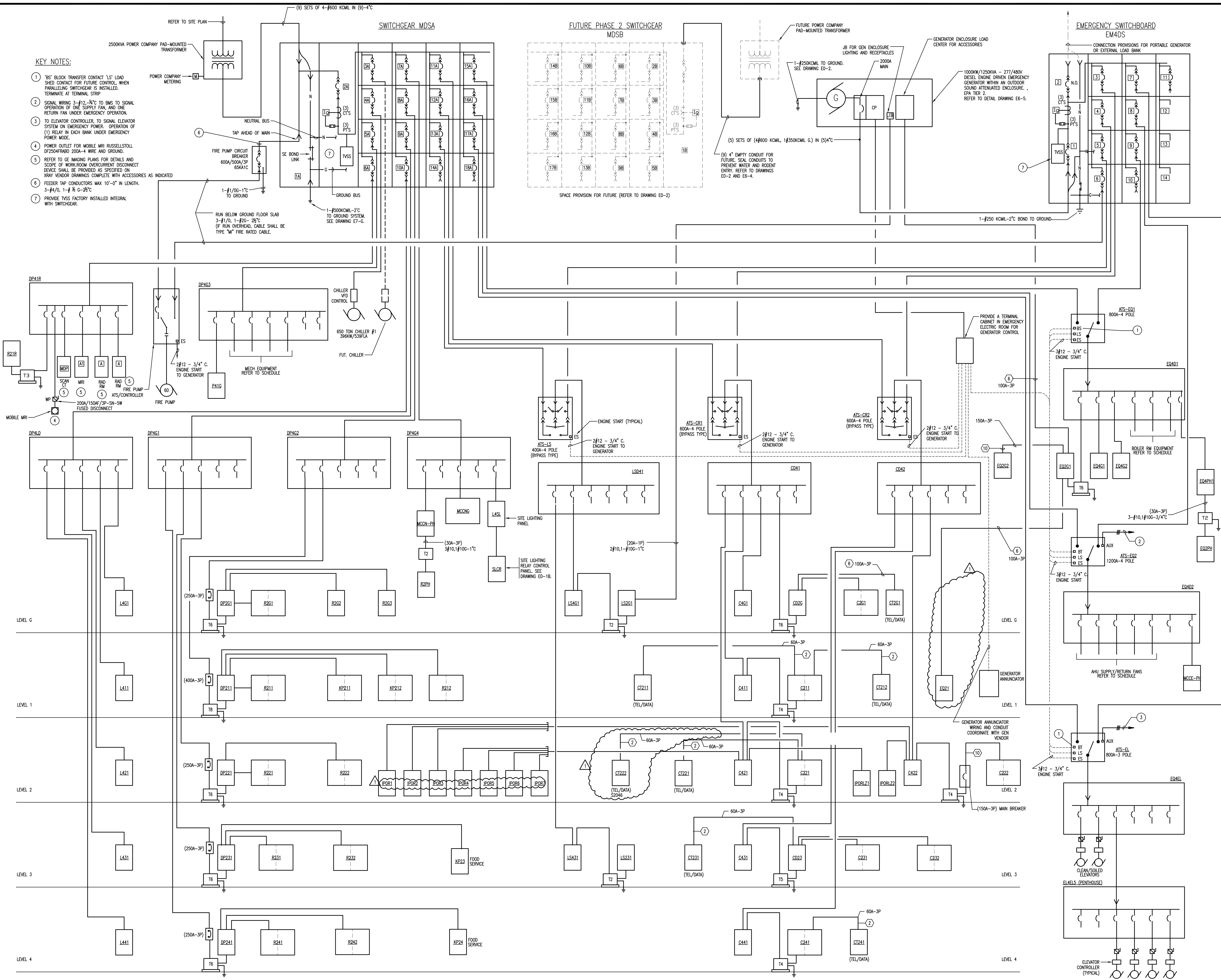


KEY NOTES:

- 1' 30" BLOCK TRANSFER CONTACT 1'S LOAD SHED CONTACT FOR FUTURE CONTROL. WHEN PARALLELING SWITCHGEAR IS INSTALLED, TERMINATE AT TERMINAL STRIP.
- SIGNAL WIRING 3-#12-2#C TO BUS TO SIGNAL OPERATION OF ONE SUPPLY FAN, AND ONE RETURN FAN UNDER EMERGENCY OPERATION.
- TO ELEVATOR CONTROLLER, TO SIGNAL ELEVATOR SYSTEM ON EMERGENCY POWER. OPERATION OF (1) RELAY IN EACH BANK UNDER EMERGENCY POWER MODE.
- POWER OUTLET FOR MOBILE MRI RUSSELLSTOLL DP2504FRAB0 200A-4 WIRE AND GROUND.
- REFER TO GE IMAGING PLANS FOR DETAILS AND SCOPE OF WORK-ROOM OVERCURRENT DISCONNECT DEVICE SHALL BE PROVIDED AS SPECIFIED ON XRAY VENDOR DRAWINGS COMPLETE WITH ACCESSORIES AS INDICATED.
- FEEDER TAP CONDUCTORS MAX 10'-0" IN LENGTH. 3-#4/0, 1-# 1/2 G-2#C.
- PROVIDE TVSS FACTORY INSTALLED INTEGRAL WITH SWITCHGEAR.



Revisions
 Addendum #1 11/22/06

Consultant
 CIVIL ENGINEER
 DeLuca-Hoffman Associates, Inc.
 778 Main Street, Suite 8
 South Portland, ME 04106
 Phone: (207) 775-1121
 Fax: (207) 879-0896

Consultant
 ASSOCIATE ARCHITECT/STRUCTURAL ENGINEER
 SMRT
 144 Fore Street P.O. Box 618
 Portland, Maine 04104
 Phone: (207) 772-3846
 Fax: (207) 772-1070

Consultant
 MECHANICAL/ELECTRICAL ENGINEER
 Bord, Rao + Athanas Consulting Engineers, LLC
 The Arsenal on the Charles
 311 Arsenal Street
 Watertown, MA 02472-5789
 Phone: 617.254.0016
 Fax: 617.924.9339

Consultant
 EQUIPMENT PLANNING
 Gene Burton & Associates
 1893 General George Patton Drive
 Franklin, Tennessee 37067
 Phone: (615) 376-3100
 Fax: (615) 376-3114

Consultant
 CONSTRUCTION MANAGER
 Gibbons Building Company
 7 Jackson Walkway
 Providence, Rhode Island 02903
 Phone: (401) 456-5905
 Fax: (401) 456-5516

Consultant
 FOOD SERVICE
 Inman Foodservice, LLC
 1808 West End Ave. Suite 1400
 Nashville, TN 37203
 Phone: (615) 321-5591
 Fax: (615) 321-5689

It is the responsibility of the Construction Manager/General Contractor and all Sub-Contractors to verify all dimensions and accept conditions of prior work by related trades before proceeding with any work.

Date
 11/10/06 Final-Issued for Construct
 Drawn By

Scale
 NONE

Francis
 Cauffman
 Foley
 Hoffmann

Francis Cauffman 2120 Arch Street
 Foley Hoffmann Philadelphia, PA 19103
 Architects Ltd. 215-568-8250

Project Title
 Mercy Health Care
 System of Maine
 FORE RIVER SHORT
 STAY HOSPITAL

Project Number
 F05-4898

Drawing Title and Number
 ELECTRICAL
 ONE-LINE
 DIAGRAM
 E4-1