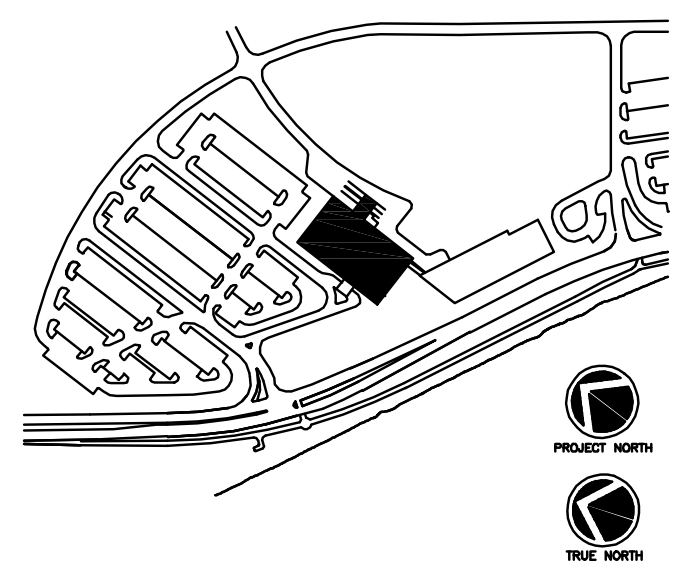


EQUIPMENT SCHEDULE						
ITEM NO.	DESCRIPTION	VOLTS	WATTS/AMPS KW	CIRCUIT BREAKER	CONN.	NOTES
62	LASER IMAGER, DRY	208V-1ø	10A	20A-2P	H-O-E	(1) (2) (3) (6)
86	WORK STATION, WALL MOUNT	120V-1ø	100W		E	(3)
275	VENTILATOR, ICU	120V-1ø	3.2A		E	(2)
300	ILLUMINATOR, 1-PANEL SURF.	120V-1ø	200W		H-O-E	(4)
301	BED, MED/SURG.	120V-1ø	6.4A	20A-1P	H	(2) (6)
313	MICROWAVE, COUNTERTOP 1.8	120V-1ø	13.6A	20A-1P	H	(1)
344	WARMING CAB, 2-COMP. 24" DP	120V-1ø	12A	20A-1P	S-E	(1) (2)
351	BED, BIRTHING	120V-1ø	6A	20A-1P	H	(1) (2) (3) (6)
420	COFFEE BREWER W/FAUCET	120V-1ø	15A	20A-1P	H	(1)
426	WASHER/DISINFECTOR	208V-3ø	6.5kW	30A-3P	S-E	(1) (2) (3)
477	U/C FREEZER	120V-1ø	6A	20A-1P	E	(1) (2)
500	MEDICATION DISPENSER, 2DWR MAN	120V-1ø	100W		E	(2) (3)
501	MEDICATION DISPENSER, 6DWR MAN	120V-1ø	100W		E	(2) (3)
656	MONITOR, PHYS_MPSO (MED)	120V-1ø	100W		H-E	(2) (3)
677	HOOD, BIO-SAFETY	120V-1ø	12.4A	20A-1P	H-O-E	(1) (2) (6)
717	ICE MACHINE	120V-1ø	15A	20A-1P	E	(1) (2)
804	DOCKING STATION W/DETERGENT	120V-1ø	15A	20A-1P	H	(1)
807	MONITOR, PACS, FLAT DUAL	120V-1ø	70W		E	(2) (3)
895	CT SCANNER, MULTISLICE	480V-3ø	125A-3P	CIRCUIT BREAKER		SEE MANUFACTURERS DRAWINGS
927	HOOD, LAMINAR FLOW 4FT.	120V-1ø	14.2A	20A-1P	E	(1) (2)
1115	ICEMAKER, FLAKER	120V-1ø	11A	20A-1P	H	(1)
1128	CENTRIFUGE, FLOOR, REFRIGERATED	208V-1ø	2kW	30A-2P	H-O	(1) (6)
1138	GROSSING STATION	120V-1ø	12A	20A-1P	H-O-E	(1) (2)
1149	OB INFORMATION SYSTEM, 20 BED	120V-1ø			E	(2) (3)
1155	STERILIZER, LOW TEMP 1-DOOR	120V-1ø	16A	20A-1P	H-O	(1) (6)
1180	INCUBATOR, INFANT	120V-1ø	500w	20A-1P	E	(1) (2)
1197	WARMER, INFANT-NICU	120V-1ø	680w	20A-1P	E	(1) (2)
1331	QA SYSTEM, COMPUTED RADIOGRAPHY	120V-1ø	3A		E	(2) (3)
1334	ID STATION, COMPUTED RADIOGRAPHY	120V-1ø	3A		E	(2) (3)
1336	CR READER, MULTI CASSETTE	120V-1ø	17A	30A-1P	H-O-E	(1) (2) (3) (6)
1472	INCUBATOR, ROTATOR	120V-1ø	9.5A	20A-1P	E	(1) (2) (3)
1488	MONITOR, PHYSIOLOGICAL	120V-1ø	90w		E	MOBILE
1489	ICEMAKER, COUNTERTOP	120V-1ø	13A	20A-1P	H	(1)
1518	MEDICATION DISPENSER 2DWR AUXILIARY	120V-1ø	100W		E	(2) (3)
1549	EXAM TABLE	120V-1ø	6.5A	20A-1P	H	(1)
1626	STERILIZER, STEAM	120V-1ø	12A	20A-1P	S-E	(1) (2)
1829	BOOM, EQUIPMENT-DUAL ARM	120V-1ø				(SEE FLOOR PLANS)
1915	ULTRASONIC CLEANER, CONSOLE	120V-1ø	14A	20A-1P	S-E	(1)
2000	U/C FREEZER	120V-1ø		20A-1P	E	(1) (2)
2047	C-ARM, MOBILE 9-INCH	120V-1ø	15A	20A-1P	E	(1) (2) (3)
2540	ILLUMINATOR, 2-PANEL SURFACE	120V-1ø	3A		H-O-E	(4)
2655	ILLUMINATOR, 2/2 PANEL SURFACE	120V-1ø	2.8A		H-O-E	(4)
2754	CYROSTAT	120V-1ø	150w		E	
2766	ANESTHESIA MACHINE	120V-1ø	15A	20A-1P	E	(1) (2) (3)
2893	FREEZER, FOOD U/C 5.0 CUFT	120V-1ø	6A	20A-1P	E	(2)
2913	FREEZER, PHARM 1-DR UP 28.0 CUFT	208V-1ø	3.5A	20A-2P	H-O-E	(1) (2) (6)
3027	STERILIZER, LOW TEMP	208V-3ø	20A	30A-3P	L21-20R	(1) (2)
3028	FREEZER, LAB 2-DR UP-22C	120V-1ø	16A	20A-1P	H-O-E	(1) (2)
3125	INJECTOR, CONTRAST MEDICAL-MRI	120V-1ø	2A		E	(8)
3241	REFRIGERATOR/FREEZER W/O ICEMAKER	120V-1ø	15A	20A-1P	H	(1)
3373	REFRIGERATOR, FLORAL DISPLAY	120V-1ø	10A	20A-1P	H	(1)
3453	ANESTHESIA SUPPLY SYSTEM, MOBILE	120V-1ø	100w		E	(2) (3)
3561	ANALYZER, CHEMISTRY	120V-1ø	9.9A	20A-1P	E(2)	(1) (2) (7)
3564	MONITOR, CRITICAL CARE	120V-1ø	140w		H-E	(2) (3)
3583	HEADWALL, VERTICAL	120V-1ø				(SEE FLOOR PLANS)
3678	SUPPLY STATION, 2-COL. AUXILIARY	120V-1ø	3A		E	(2) (3)
3680	SUPPLY STATION, 1-COL. AUXILIARY	120V-1ø	1.25A		E	(2) (3)
3683	STERILIZER, GRAVITY, FREE-STANDING	120V-1ø	12A	20A-1P	S-E	(1) (2)
3785	HEADWALL, HORIZONTAL	120V-1ø				(SEE FLOOR PLANS)
3807	WARMER, INFANT WALL	120V-1ø	4.2A		E	(2)
3836	REFRIGERATOR, COMPACT 1.8 CUFT	120V-1ø	1.4A		H	
3856	TISSUE PROCESSOR, BENCHTOP	120V-1ø	11A	20A-1P	H	(1)
3964	MEDICATION DISPENSER, 1-COL. AUXILIARY	120V-1ø	2.2A		E	(2) (3)
3983	ANESTHESIA MACHINE	120V-1ø	10A	20A-1P	E	(1) (2)
4010	CONTROL, LIGHT STELLAR SERIES					(FOR USE WITH 4011 LIGHT)
4011	LIGHT, SURGICAL, DUAL, CLG	120V-1ø	1.5A		H-E	(2)
4462	MONITOR, FETAL	120V-1ø	25W		H-E	(2) (3)
4527	TELEMETRY SYSTEM FETAL	120V-1ø	100W		E	(2) (3)
4543	MONITOR, FETAL/MATERNAL ALL ACUTYS	120V-1ø	60W		H-E	(2) (3)
4963	ELECTROSURGICAL UNIT	120V-1ø	7A	20A-1P	H	
5060	REFRIGERATOR, LAB 2-DOOR DISPLAY	120V-1ø	15A	20A-1P	H-O-E	(1) (2)

EQUIPMENT SCHEDULE (cont.)						
ITEM NO.	DESCRIPTION	VOLTS	WATTS/AMPS KW	CIRCUIT BREAKER	CONN.	NOTES
5101	TABLE, SURGICAL	120V-1ø	8A	20A-1P	H	
5539	CARDIOGRAPHY, PAGERWRITER TOUCH	120V-1ø	150w		E	(2) (3) MOBILE
5446	WORKSTATION, PACS	120V-1ø	2A		E	(2) (3)
5590	REFRIGERATOR/FREEZER W/ICE	120V-1ø	15A	20A-1P	H	(1)
5723	REFRIGERATOR, BLOOD BANK 2 DOOR	120V-1ø	12.14A	20A-1P	H-O-E	(1) (2)
5804	REFRIGERATOR, UNDERCOUNTER 3.5 ADA	120V-1ø	9.8A	20A-1P	H	(1)
5847	MONITOR, FLAT PANEL, SURG 19"	120V-1ø	60w		H-E	(3)
5852	WORKSTATION, PACS, FLAT DUAL 5-MEGA	120V-1ø	72w		E	(2) (3)
5854	AUDIOMETER, NEWBORN	120V-1ø	100w		E	(3) MOBILE
6084	WORKBENCH, MOBILE	120V-1ø	15A	20A-1P	H	(1)
6085	REFRIGERATOR, 1-DOOR PAS THRU	120V-1ø	10.2A	20A-1P	H-O-E	(1) (2)
6202	RADIOGRAPHIC UNIT, MOBILE	120V-1ø	5A		E	MOBILE
6233	ANALYZER, HEMATOLOGY	120V-1ø	15A	20A-1P	E(3)	(1) (2) (3)
6234	SLIDE STAINER, HEMATOLOGY	120V-1ø	5A		E	
6245	HEATING UNIT, HYDROCOLLATOR	120V-1ø	1000w	20A-1P	H	(1)
6279	WASHER, CART	480V-3ø	7.3A	20A-3P	S-E	(1) (2)
6286	CONVEYOR RACK RETURN (CONTROLS)	120V-1ø	1.3A	20A-1P	H-E	(1) (2)
6287	AIR COMPRESSOR	120V-1ø	4.2A	20A-1P	H-E	(1) (2)
6526	C-ARM (VASCULAR)-MOBILE 12 INCH	120V-1ø	20A	20A-1P	H	(1)
6911	WATER BATH, LAB	120V-1ø	11A	20A-1P	H	(1)
6967	WARMER, INFANT	120V-1ø	6.6A		E	(2) MOBILE
7050	TABLE, SURGICAL	120V-1ø	4.5A		H	
7053	WASHER, FRONT LOAD	280V-3ø	15A	20A-3P	S-E	(1)
7055	DRYER, COMMERCIAL	280V-3ø	15A	20A-3P	S-E	(1)
7085	BOOM DUAL RADIAL ARM ( ANESTHESIA)	120V-1ø				(SEE FLOOR PLANS)
7201	ANESTHESIA MACHINE	120V-1ø	15A	20A-1P	H	(1) MOBILE
7293	BENCH, PRODUCTIVITY	120V-1ø	15A	20A-1P	H	(1) (3)
7318	MATERNAL/FETAL ANTEPARTUM MONITOR	120V-1ø	100w		H-E	(2) (3)
7335	REFRIGERATOR, PHARMACY, 1-DOOR	120V-1ø	10A	20A-1P	H	(1) (2)
7433	ANALYZER, COAGULATION	120V-1ø	1400w	20A-1P	E	(1) (2)
7457	BLOOD TYPING SYSTEM	120V-1ø	3A		H	
7562	WARMER, CONTRAST MEDIA	120V-1ø	4A		E	
7621	ULTRASOUND, DIAGNOSTIC	120V-1ø	1050w	20A-1P	H-E	(1) (2) (3) MOBILE
8308	INJECTOR, CONTRAST FOR CT	120V-1ø	180w		H	
8315	UTILITY COLUMN	120V-1ø				(SEE FLOOR PLANS)
8319	MRI, 1.5T	480V-3ø		(SEE ONE-LINE RISER)	CIRCUIT BREAKER	SEE MANUFACTURERS DRAWINGS
8322	RAD/DIGITAL	480V-3ø		(SEE ONE-LINE RISER)	PANEL	SEE MANUFACTURERS DRAWINGS
8445	HOOD	120V-1ø		20A-1P	H	(1) (2)
8927	TUB, BIRTHING/LABOR	120V-1ø	3.5A		E	(2)
9110	WARMING CABINET, 1-COMP 23" DEEP	120V-1ø	15A	20A-1P	S-E	(1)
9143	TUB, BIRTHING	120V-1ø	10.5A	20A-1P	S-E	(1)

- KEY NOTES
- PROVIDE DEDICATED CIRCUIT
  - REQUIRES EMERGENCY POWER
  - REFER TO TELECOMMUNICATION DRAWINGS FOR TEL/DATA REQUIREMENTS
  - DUPLEX RECEPTACLES SHALL BE MOUNTED ON RIGHT SIDE OF UNIT
  - PROVIDE 3/10 & 1/100-3/4" C
  - REFER TO SPECIAL PURPOSE RECEPTACLE SCHEDULE FOR NEMA CONFIGURATION
  - PROVIDE ONE RECEPTACLE ON EACH SIDE OF ANALYZER SYSTEM
  - MASTER CONTROL UNIT ONLY REQUIRES POWER ON WALL



Consultant  
 CIVIL ENGINEER  
 DeLuca-Hoffman Associates, Inc.  
 778 Main Street, Suite 8  
 South Portland, ME 04106  
 Phone: (207) 775-1121  
 Fax: (207) 879-0896

Consultant  
 ASSOCIATE ARCHITECT/STRUCTURAL ENGINEER  
 SMRT  
 144 Fore Street P.O. Box 618  
 Portland, Maine 04104  
 Phone: (207) 772-3846  
 Fax: (207) 772-1070

Consultant  
 MECHANICAL/ELECTRICAL ENGINEER  
 Bord, Rao + Athanos Consulting Engineers, LLC  
 The Arsenal on the Charles  
 311 Arsenal Street  
 Watertown, MA 02472-5789  
 Phone: 617.254.0018  
 Fax: 617.924.9339

Consultant  
 EQUIPMENT PLANNING  
 Gene Burton & Associates  
 1893 General George Patton Drive  
 Franklin, Tennessee 37067  
 Phone: (615) 376-3100  
 Fax: (615) 376-3114

Consultant  
 CONSTRUCTION MANAGER  
 Gilbane Building Company  
 7 Jackson Walkway  
 Providence, Rhode Island 02903  
 Phone: (401) 456-5905  
 Fax: (401) 456-5516

Consultant  
 FOOD SERVICE  
 Inman Foodservice, LLC  
 1808 West End Ave. Suite 1400  
 Nashville, TN 37203  
 Phone: (615) 321-5591  
 Fax: (615) 321-5689

It is the responsibility of the Construction Manager/General Contractor and all Sub-Contractors to verify all dimensions and accept conditions of prior work by related trades before proceeding with any work.

Date  
 11/10/06 Final-Issued for Constructi  
 Drawn By

Scale  
 NONE

Francis  
 Cauffman  
 Foley  
 Hoffmann

Francis Cauffman 2120 Arch Street  
 Foley Hoffmann Philadelphia, PA 19103  
 Architects Ltd. 215-568-8250

Project Title  
 Mercy Health Care  
 System of Maine  
 FORE RIVER SHORT  
 STAY HOSPITAL



Project Number  
 F05-4898  
 Drawing Title and Number  
 ELECTRICAL  
 EQUIPMENT SCHEDULE

J:\JOBS\2523000\DWG\ELEC\ONE-EQUIP-SCHEDULE.DWG 11-20-2006 10:46:36 - Inr