

### MEDICAL GAS ZONE VALVE BOX SCHEDULE

TAG	MANUFACTURER	LOCATION	OX	MA	MV	N	NO	EVC	CO2	A	REMARKS
ZVB-1-1	BEACON MEDGAS	CORRIDOR - LEVEL 1	1"	1 1/4"	2"	-	-	-	-	-	
ZVB-1-2	BEACON MEDGAS	CORRIDOR - LEVEL 1	3/4"	1"	1 1/2"	-	-	-	-	-	
ZVB-2-1	BEACON MEDGAS	CORRIDOR - LEVEL 2	3/4"	1"	1 1/4"	-	-	-	-	-	
ZVB-2-2	BEACON MEDGAS	CORRIDOR - LEVEL 2	3/4"	1"	1 1/4"	-	-	-	-	-	
ZVB-2-3	BEACON MEDGAS	CORRIDOR - LEVEL 2	3/4"	1"	1 1/4"	-	-	-	-	-	
ZVB-2-4	BEACON MEDGAS	CORRIDOR - LEVEL 2	1"	1 1/4"	2"	-	-	-	-	-	
ZVB-2-5	BEACON MEDGAS	CORRIDOR - LEVEL 2	1"	1 1/4"	2"	-	-	-	-	-	
ZVB-2-6	BEACON MEDGAS	CORRIDOR - LEVEL 2	1"	1 1/4"	2"	-	-	-	-	-	
ZVB-2-7	BEACON MEDGAS	CORRIDOR - LEVEL 2	1"	1 1/4"	2"	-	-	-	-	-	
ZVB-2-8	BEACON MEDGAS	CORRIDOR - LEVEL 2	1"	1 1/4"	2"	-	-	-	-	-	
ZVB-2-9	BEACON MEDGAS	CORRIDOR - LEVEL 2	1"	1 1/4"	2"	-	-	-	-	-	
ZVB-2-10	BEACON MEDGAS	CORRIDOR - LEVEL 2	1"	1 1/4"	2"	-	-	-	-	-	
ZVB-3-1	BEACON MEDGAS	CORRIDOR - LEVEL 3	1/2"	1/2"	1 1/4"	-	-	-	-	-	
ZVB-3-2	BEACON MEDGAS	CORRIDOR - LEVEL 3	1/2"	1/2"	1 1/4"	-	-	-	-	-	
ZVB-3-3	BEACON MEDGAS	CORRIDOR - LEVEL 3	1/2"	3/4"	1 1/4"	-	-	-	-	-	
ZVB-3-4	BEACON MEDGAS	CORRIDOR - LEVEL 3	3/4"	1 1/4"	2"	-	-	-	-	-	
ZVB-3-5	BEACON MEDGAS	TRIAGE - LEVEL 3	3/4"	1"	1 1/2"	-	-	-	-	-	
ZVB-3-6	BEACON MEDGAS	CORRIDOR - LEVEL 3	1/2"	-	1"	-	-	-	-	-	
ZVB-4-1	BEACON MEDGAS	CORRIDOR - LEVEL 4	1"	1 1/4"	2"	-	-	-	-	-	
ZVB-4-2	BEACON MEDGAS	CORRIDOR - LEVEL 4	3/4"	1"	1 1/2"	-	-	-	-	-	

### MEDICAL GAS OUTLET SCHEDULE

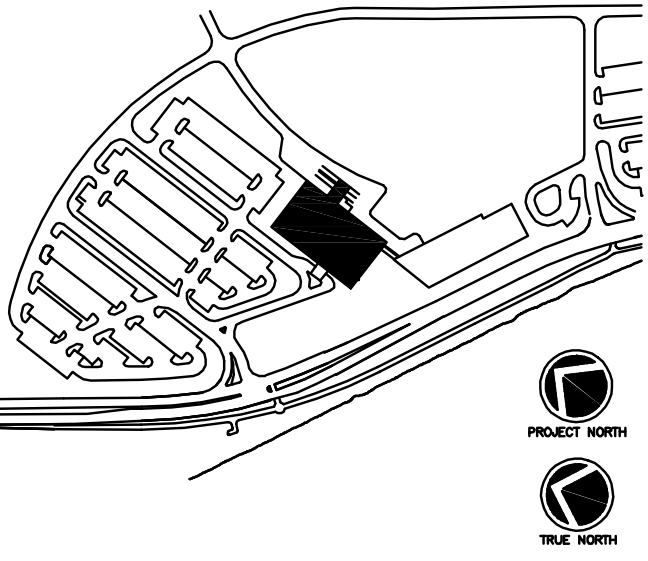
TAG	MANUFACTURER	LOCATION	OX	MA	MV	N	NO	EVC	A	SLIDE	REMARKS
A	BEACON MEDGAS	PATIENT ROOMS	3	3	3	-	-	-	-	-	
B	BEACON MEDGAS	C-SECTION	1	1	4	-	-	-	-	-	
C	BEACON MEDGAS	PROCEDURE ROOM	1	2	4	-	-	-	-	-	
D	BEACON MEDGAS	TRIAGE	2	1	2	-	-	-	-	-	
E	BEACON MEDGAS	MRI	3	2	3	-	-	-	-	-	
F	BEACON MEDGAS	CT SCAN ROOM	2	2	3	-	-	-	-	-	
G	BEACON MEDGAS	GENERAL RADIOGRAPHIC ROOM	2	1	3	-	-	-	-	-	
H	BEACON MEDGAS	PATIENT HOLDING/ PACU/ ACU	1	1	1	-	-	-	-	-	
I	BEACON MEDGAS	OR (ANESTHESIA BOOM)	4	4	5	-	-	-	-	-	
J	BEACON MEDGAS	OR (EQUIPMENT BOOM)	3	3	4	-	-	-	-	-	
K	BEACON MEDGAS	ISOLATION ROOM	1	2	1	-	-	-	-	-	
L	BEACON MEDGAS	NURSERY	1	-	1	-	-	-	-	-	

### PUMP SCHEDULE

TAG	DESCRIPTION	INLET SIZE	TANK SIZE	ELECTRICAL CHARACTERISTICS			CAPACITY CFM/PSI/Hg	REMARKS
				HP	VOLTAGE	PHASE		
MA-1	MEDICAL AIR COMPRESSOR	4"	224 gal.	2 @ 1.5 h.p.	460 v	3	2 @ 25.2acfm @ 50psig	DUPLEX MEDICAL AIR COMPRESSOR SYSTEM
MV-1	MEDICAL VACUUM PUMP	4"	200 gal.	2 @ 1.5 h.p.	460 v	3	2 @ 37 acfm @ 18"HgV	DUPLEX MEDICAL VACUUM SYSTEM

### MEDICAL GAS ALARM PANEL SCHEDULE

TAG	MANUFACTURER	LOCATION	OX	MA	MV	N	NO	EVC	CO2	A	REMARKS
LGA-1-1	BEACON MEDGAS	CLINICAL WORKSTATION	1	1	1	-	-	-	-	-	
LGA-1-2	BEACON MEDGAS	CLINICAL WORK AREA	1	1	1	-	-	-	-	-	
LGA-2-1	BEACON MEDGAS	NURSE STATION	1	1	1	-	-	-	-	-	
LGA-2-2	BEACON MEDGAS	PACU	1	1	1	-	-	-	-	-	
LGA-2-3	BEACON MEDGAS	NURSE STATION	1	1	1	-	-	-	-	-	
LGA-2-4	BEACON MEDGAS	NURSE STATION	1	1	1	-	-	-	-	-	
LGA-3-1	BEACON MEDGAS	C-SECTION 1	1	1	1	-	-	-	-	-	
LGA-3-2	BEACON MEDGAS	C-SECTION 2	1	1	1	-	-	-	-	-	
LGA-3-3	BEACON MEDGAS	CHARTING	1	1	1	-	-	-	-	-	
LGA-3-4	BEACON MEDGAS	NURSE STATION	1	1	1	-	-	-	-	-	
LGA-3-5	BEACON MEDGAS	NURSE STATION	1	-	1	-	-	-	-	-	
LGA-4-1	BEACON MEDGAS	NURSE STATION	1	1	1	-	-	-	-	-	
LGA-4-2	BEACON MEDGAS	NURSE STATION/DICT.	1	1	1	-	-	-	-	-	
MAP-1	BEACON MEDGAS	ENGINEERING SHOP	1	1	1	1	1	-	-	-	
MAP-2	BEACON MEDGAS	LOBBY S1001	1	1	1	1	1	-	-	-	



Consultant  
 CIVIL ENGINEER  
 DeLuca-Hoffman Associates, Inc.  
 778 Main Street, Suite 8  
 South Portland, ME 04106  
 Phone: (207) 775-1121  
 Fax: (207) 879-0896

Consultant  
 ASSOCIATE ARCHITECT/STRUCTURAL ENGINEER  
 SMRT  
 144 Fore Street P.O. Box 618  
 Portland, Maine 04104  
 Phone: (207) 772-3846  
 Fax: (207) 772-1070

Consultant  
 MECHANICAL/ELECTRICAL ENGINEER  
 Bard, Rao + Athanas Consulting Engineers, LLC  
 The Arsenal on the Clories  
 311 Arsenal Street  
 Watertown, MA 02472-5789  
 Phone: 617.254.0016  
 Fax: 617.924.9339

Consultant  
 EQUIPMENT PLANNING  
 Gene Burton & Associates  
 1893 General George Patton Drive  
 Franklin, Tennessee 37067  
 Phone: (615) 376-3100  
 Fax: (615) 376-3114

Consultant  
 CONSTRUCTION MANAGER  
 Gilbane Building Company  
 7 Jackson Walkway  
 Providence, Rhode Island 02903  
 Phone: (401) 456-5905  
 Fax: (401) 456-5516

Consultant  
 FOOD SERVICE  
 Inman Foodservice, LLC  
 1808 West End Ave, Suite 1400  
 Nashville, TN 37203  
 Phone: (615) 321-5591  
 Fax: (615) 321-5689

It is the responsibility of the Construction Manager/General Contractor and all Sub-Contractors to verify all dimensions and accept conditions of prior work by related trades before proceeding with any work.

Date  
 11/10/06 Final-Issued for Construction  
 Drawn By  
 NJP  
 Scale  
 NONE

Francis

Cauffman

Foley

Hoffmann

Francis Cauffman  
 Foley Hoffmann  
 Architects Ltd. 2120 Arch Street  
 Philadelphia, PA 19103  
 215-568-8250

Project Title

Mercy Health Care  
 System of Maine

FORE RIVER SHORT  
 STAY HOSPITAL



Project Number  
 F05-4898

Drawing Title and Number  
 PLUMBING  
 MEDICAL GAS  
 SCHEDULES

P0.01