

- Consultant  
**CIVIL ENGINEER**  
 DeLuca-Hoffman Associates, Inc.  
 778 Main Street, Suite 8  
 South Portland, ME 04106  
 Phone: (207) 775-1121  
 Fax: (207) 879-0896
- Consultant  
**ASSOCIATE ARCHITECT/STRUCTURAL ENGINEER**  
 SMRT  
 144 Fore Street P.O. Box 618  
 Portland, Maine 04104  
 Phone: (207) 772-3846  
 Fax: (207) 772-1070
- Consultant  
**MECHANICAL/ELECTRICAL ENGINEER**  
 The Arsenal on the Charles  
 311 Arsenal Street  
 Watertown, MA 02472-5789  
 Phone: 617.254.0016  
 Fax: 617.924.9339
- Consultant  
**EQUIPMENT PLANNING**  
 Gene Burton & Associates  
 1893 General George Patton Drive  
 Franklin, Tennessee 37067  
 Phone: (615) 376-3100  
 Fax: (615) 376-3114

- Consultant  
**CONSTRUCTION MANAGER**  
 Gilbane Building Company  
 7 Jackson Walkway  
 Providence, Rhode Island 02903  
 Phone: (401) 456-5905  
 Fax: (401) 456-5516
- Consultant  
**FOOD SERVICE**  
 Inman Foodservice, LLC  
 1808 West End Ave, Suite 1400  
 Nashville, TN 37203  
 Phone: (615) 321-5591  
 Fax: (615) 321-5689

It is the responsibility of the Construction Manager/General Contractor and all Sub-Contractors to verify all dimensions and accept conditions of prior work by related trades before proceeding with any work.

Date  
 11/10/06 Final-Issued for Construction  
 Drawn By  
 NJP

Scale  
 1/8" = 1'-0"

Francis

Cauffman

Foley

Hoffmann

Francis Cauffman  
 Foley Hoffmann  
 Architects Ltd.

2120 Arch Street  
 Philadelphia, PA 19103  
 215-568-8250

Project Title

Mercy Health Care  
 System of Maine

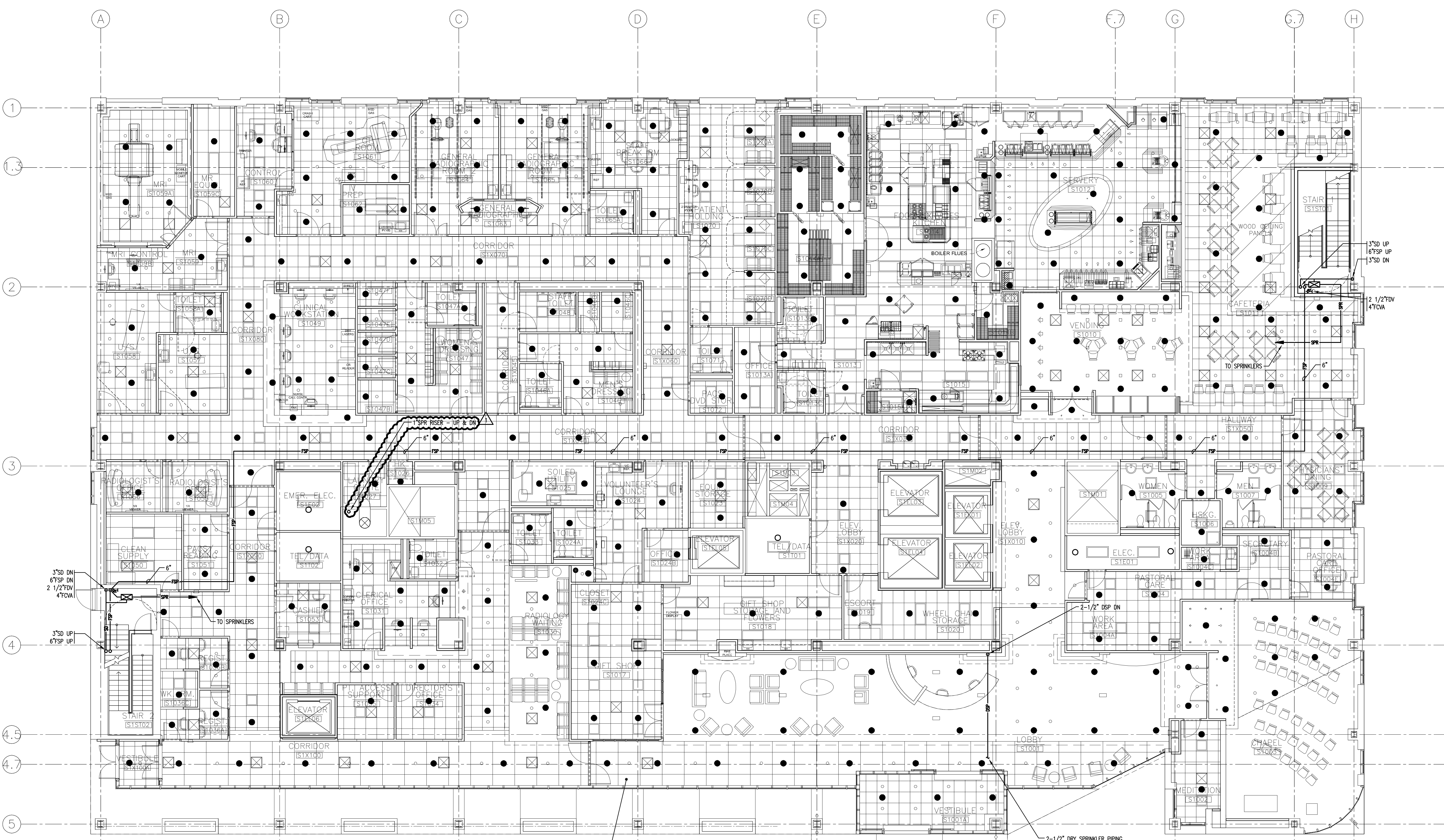
FORE RIVER SHORT  
 STAY HOSPITAL



Project Number  
 F05-4898

Drawing Title and Number  
 FIRE PROTECTION  
 LEVEL 1 FLOOR PLAN

FP1.01



AUTOMATIC SPRINKLER SYSTEM DESIGN CRITERIA	
TYPE:	WET
GROUND FLOOR	
DENSITY:	AREA OF APPLICATION 0.10 GPM 1,500 SQ.FT.
130 SQ.FT	HOSE ALLOWANCE 100 GPM
PER HEAD	
LIGHT HAZARD	

1 FIRST FLOOR PLAN  
 A1.01 1/8" = 1'-0"