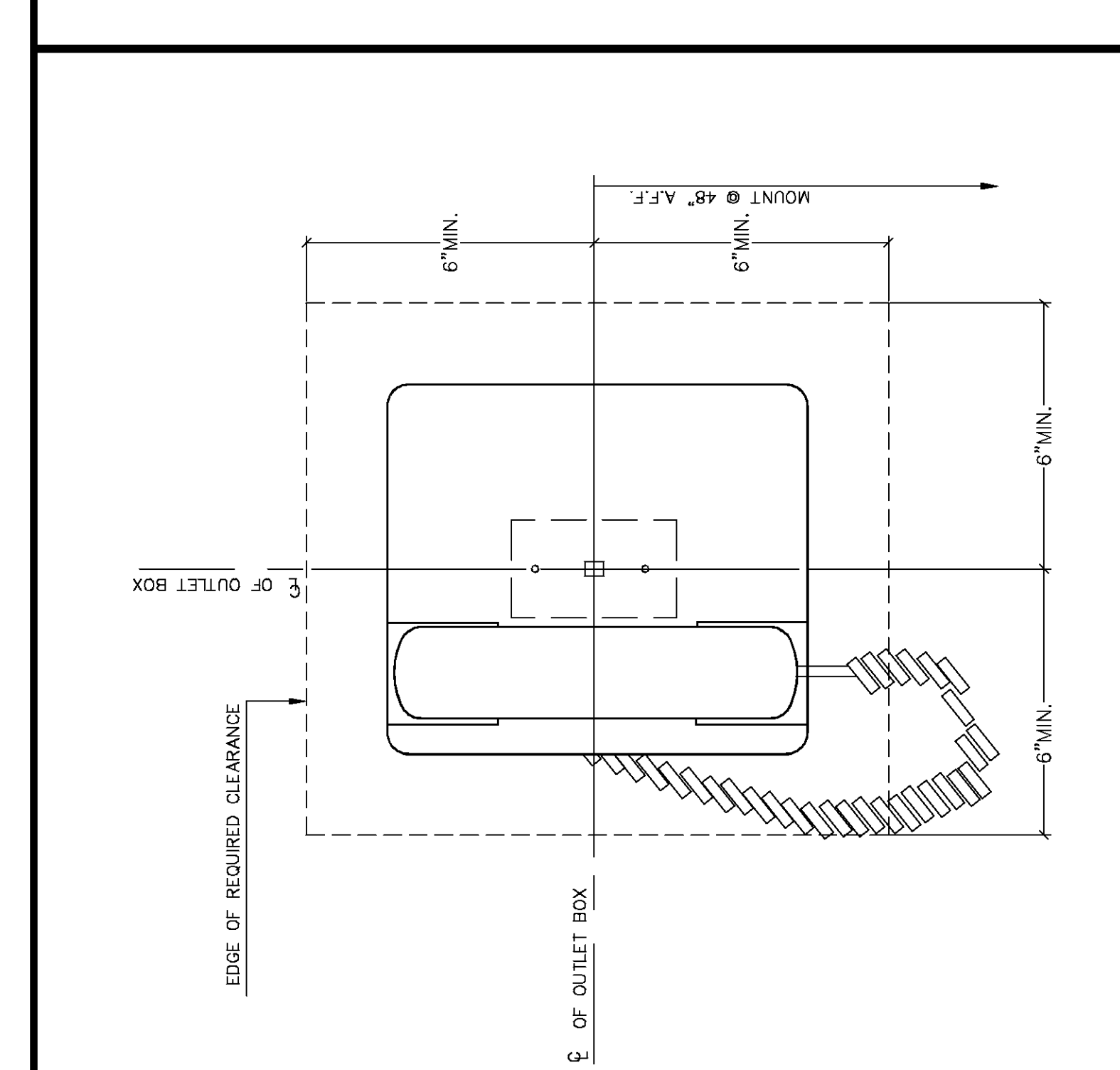
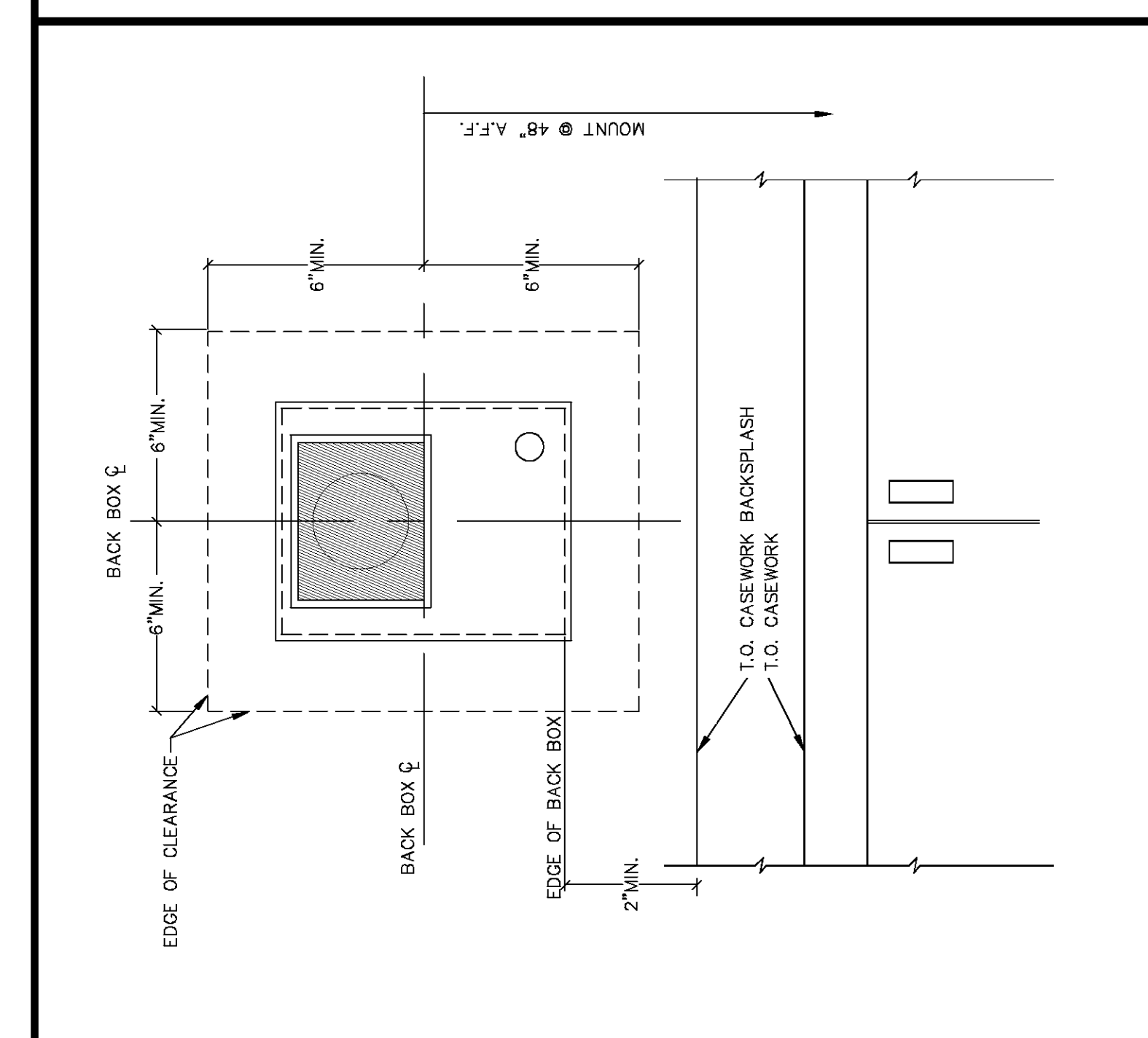


STANDARD CLEARANCES FOR: ⚠

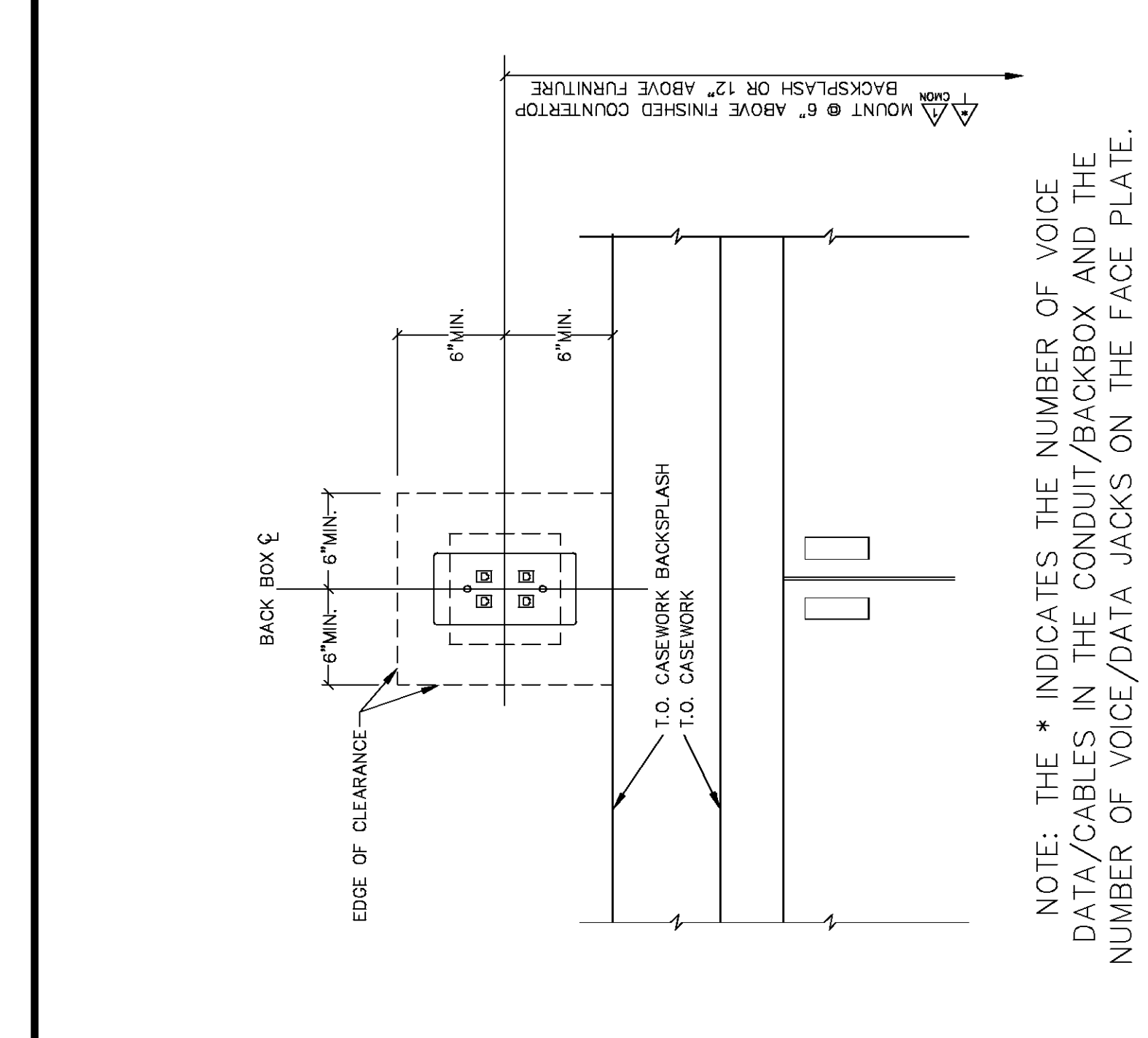
NOTE: THE * INDICATES THE NUMBER OF VOICE DATA/CABLES IN THE CONDUIT/BACKBOX AND THE NUMBER OF VOICE/DATA JACKS ON THE FACE PLATE.



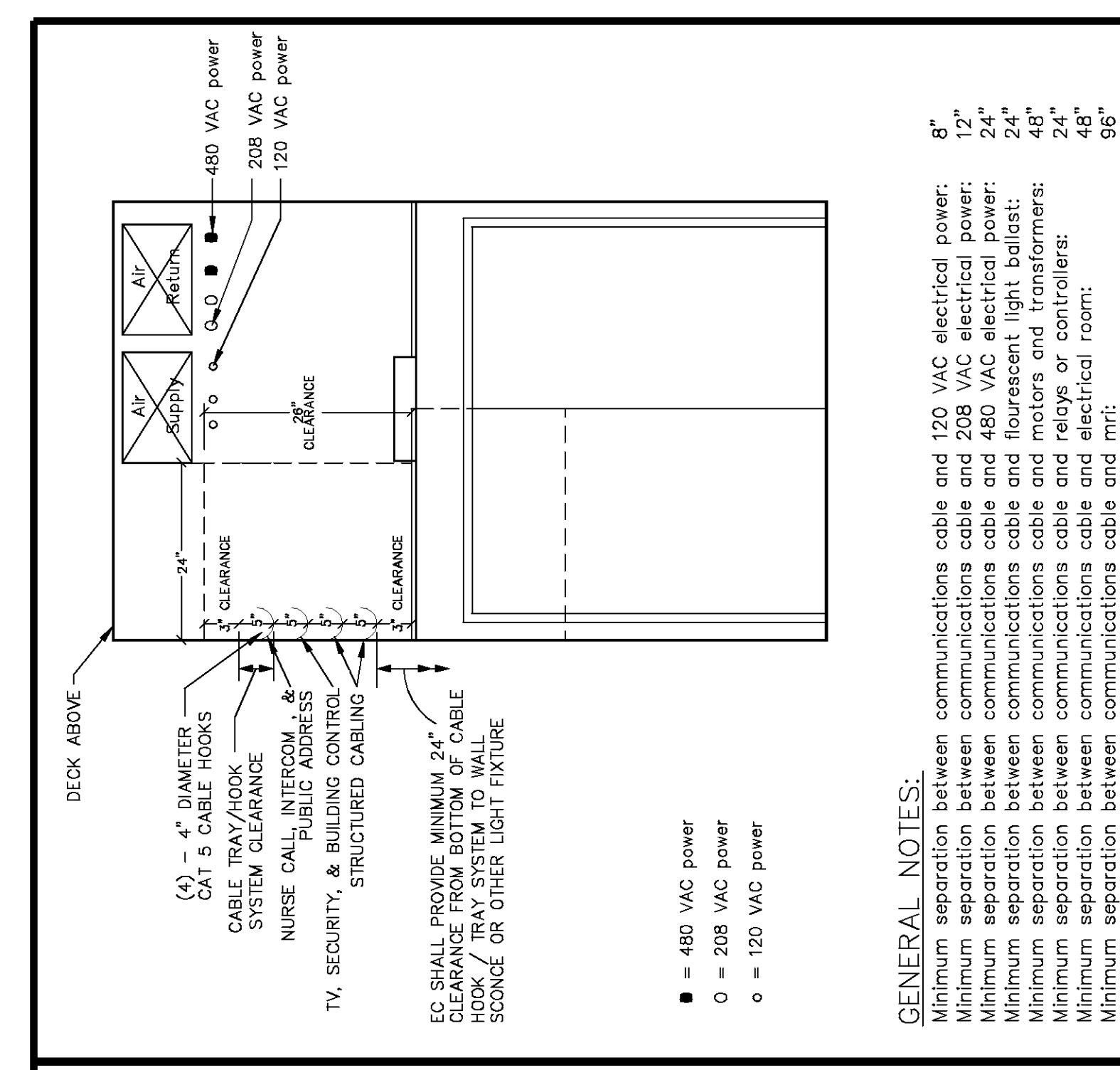
STANDARD CLEARANCES FOR: (W) & ⚠



STANDARD CLEARANCES FOR: (F)

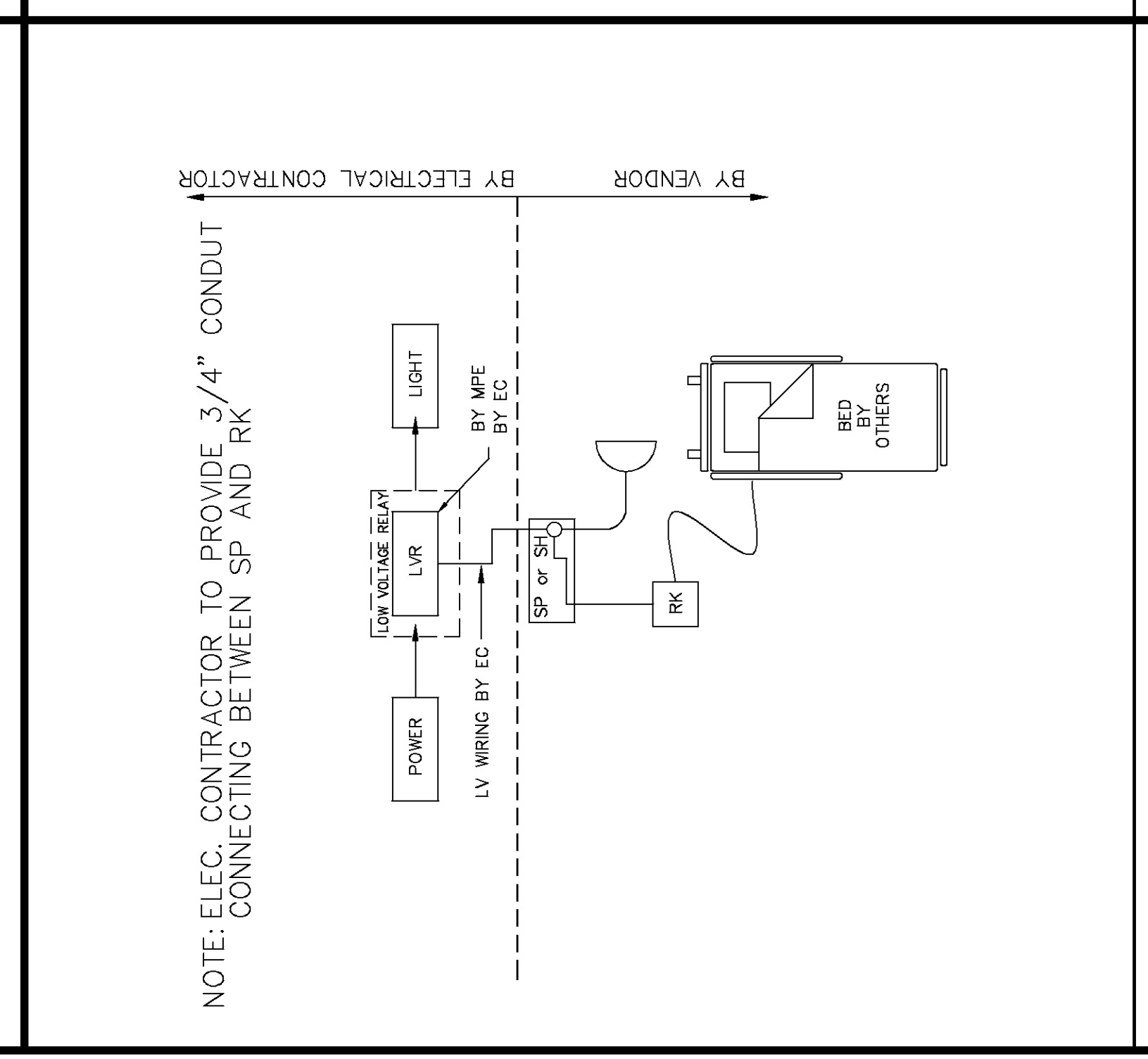


STANDARD CLEARANCES FOR: ⚠

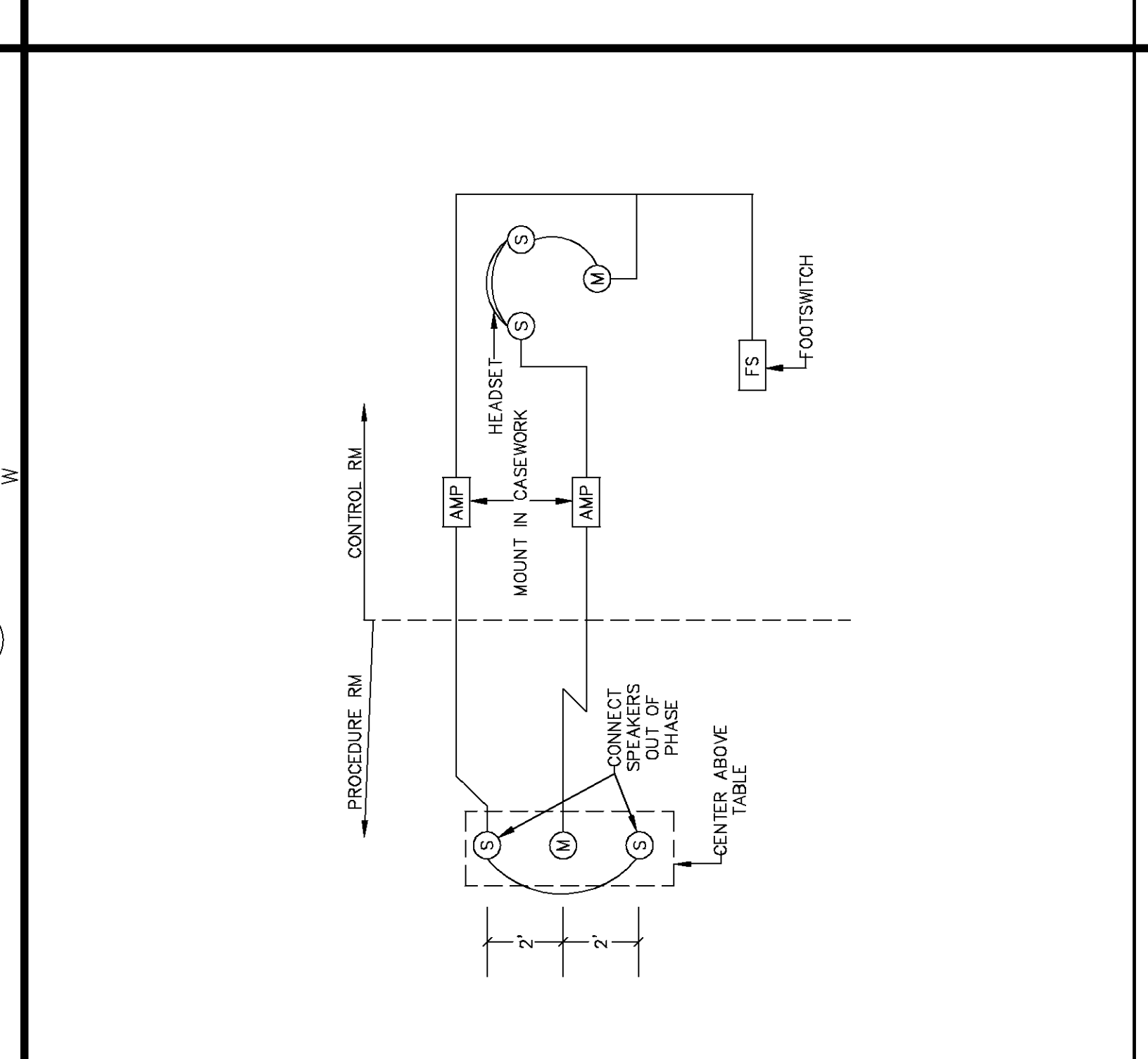


TYPICAL CORRIDOR SLEEVE/CABLE CROSS SECTION

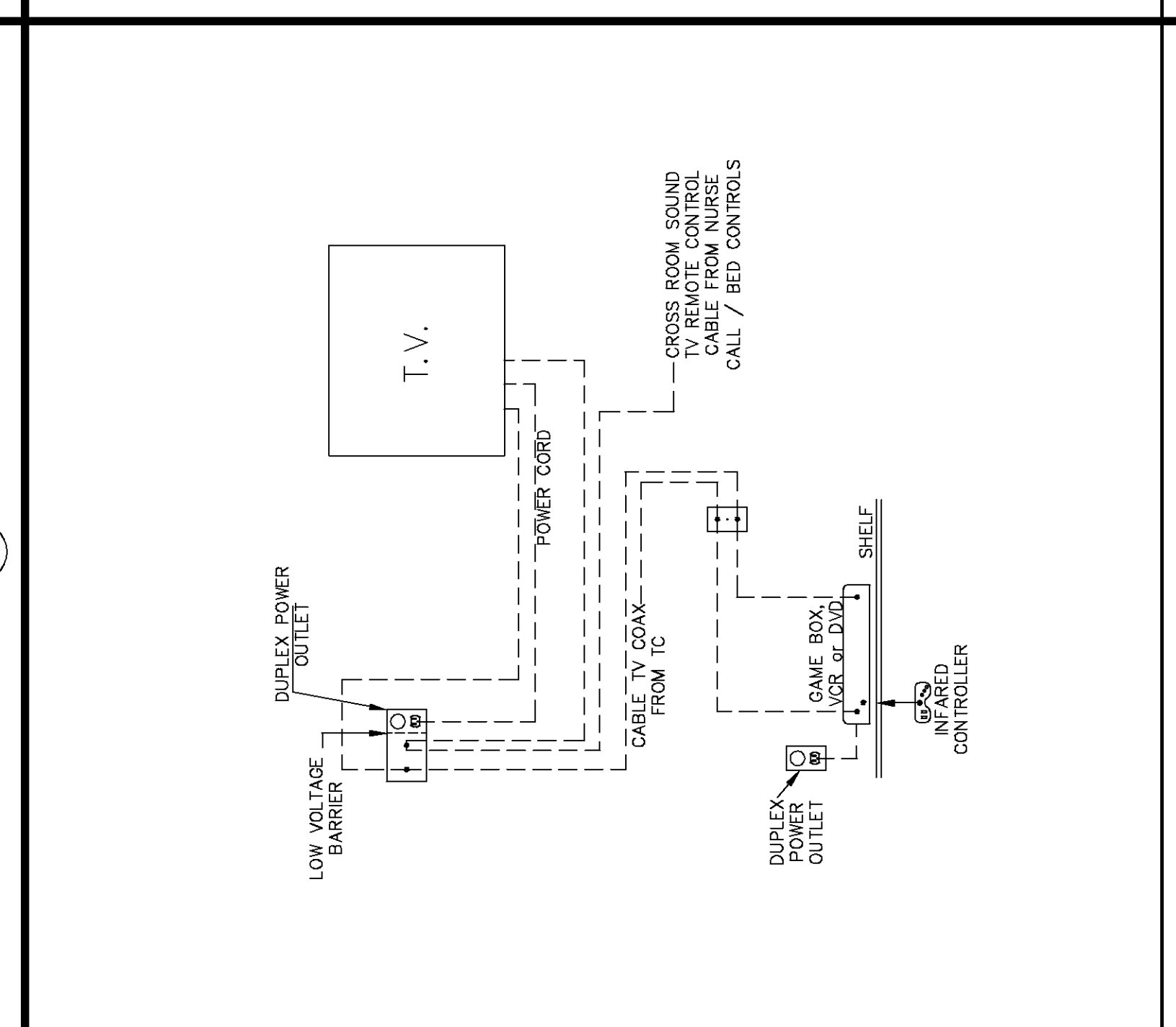
GENERAL NOTES:
 Minimum separation between communications cable and 120 VAC electrical power: 8"
 Minimum separation between communications cable and 208 VAC electrical power: 12"
 Minimum separation between communications cable and 480 VAC electrical power: 17"
 Minimum separation between communications cable and fluorescent light ballast: 24"
 Minimum separation between communications cable and motors and transformers: 24"
 Minimum separation between communications cable and other electrical equipment: 48"
 Minimum separation between communications cable and electrical raceways: 48"
 Minimum separation between communications cable and electrical room: 48"
 Minimum separation between communications cable and mti: 96"



LOW VOLTAGE RELAY DETAIL



TYPICAL CATH LAB INTERCOM DETAIL



GAMEBOX DETAIL

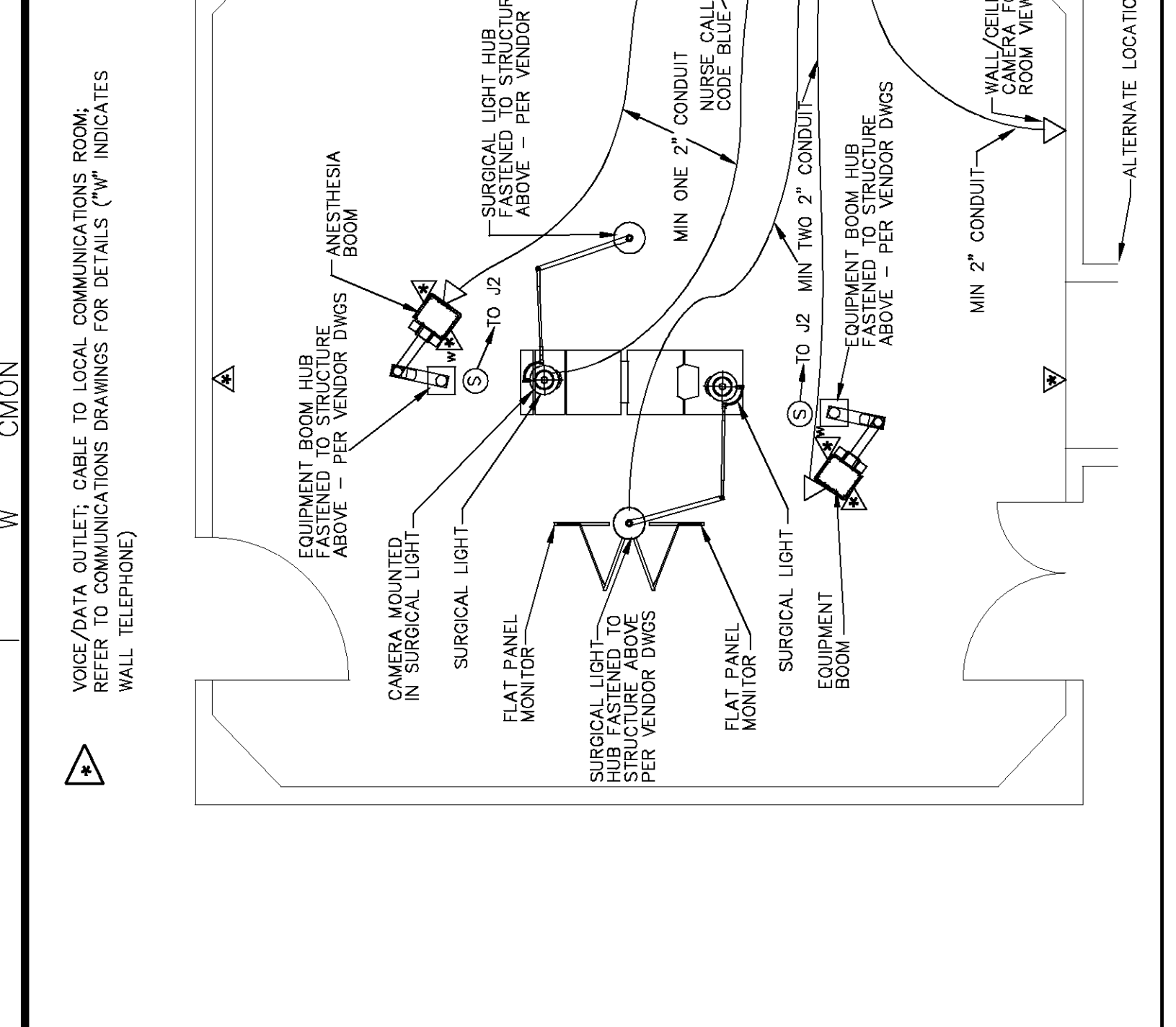
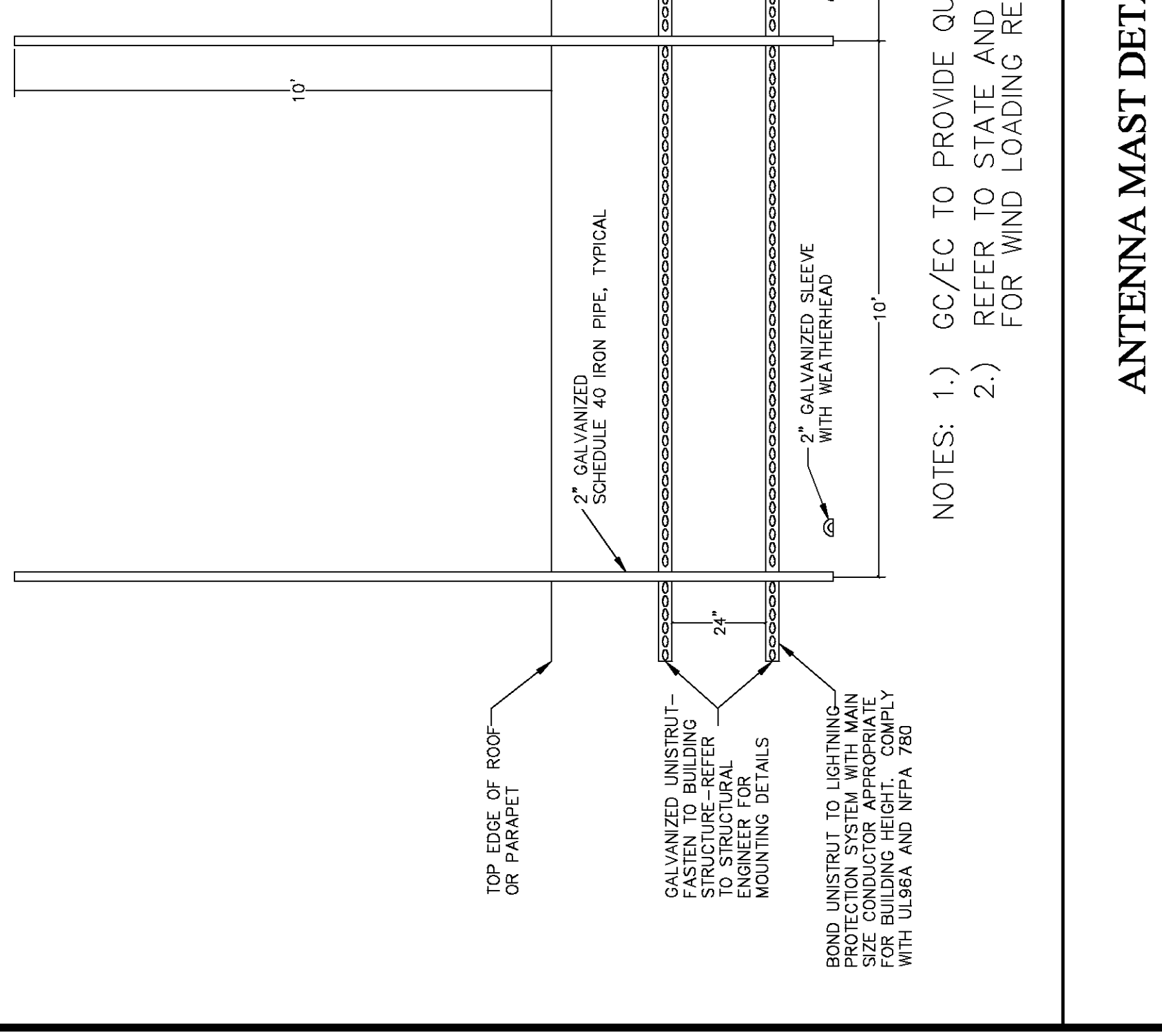
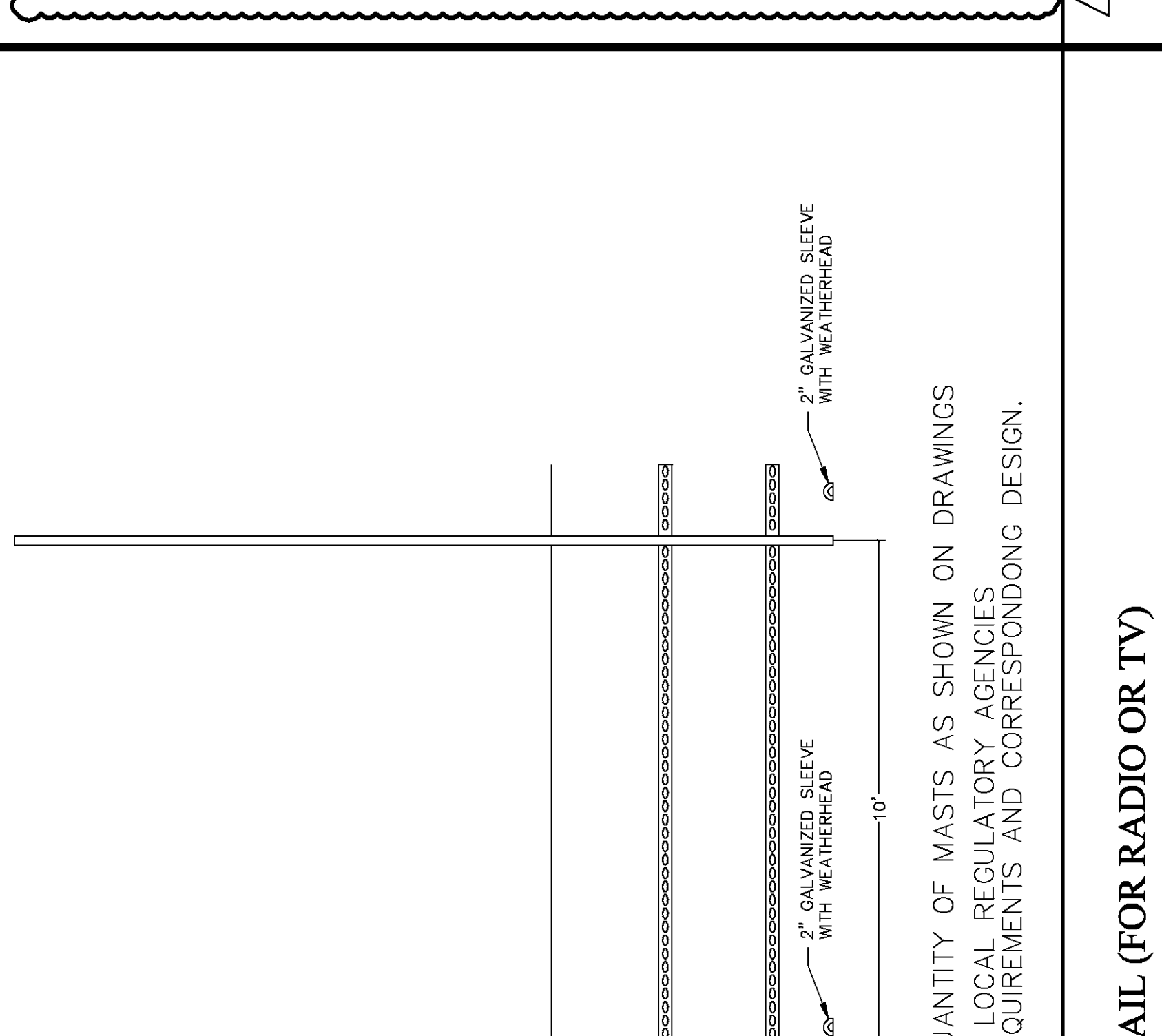


DIAGRAM OF TYPICAL MINIMALLY INVASIVE SURGERY SUITE VERIFY WITH VENDOR DRAWINGS

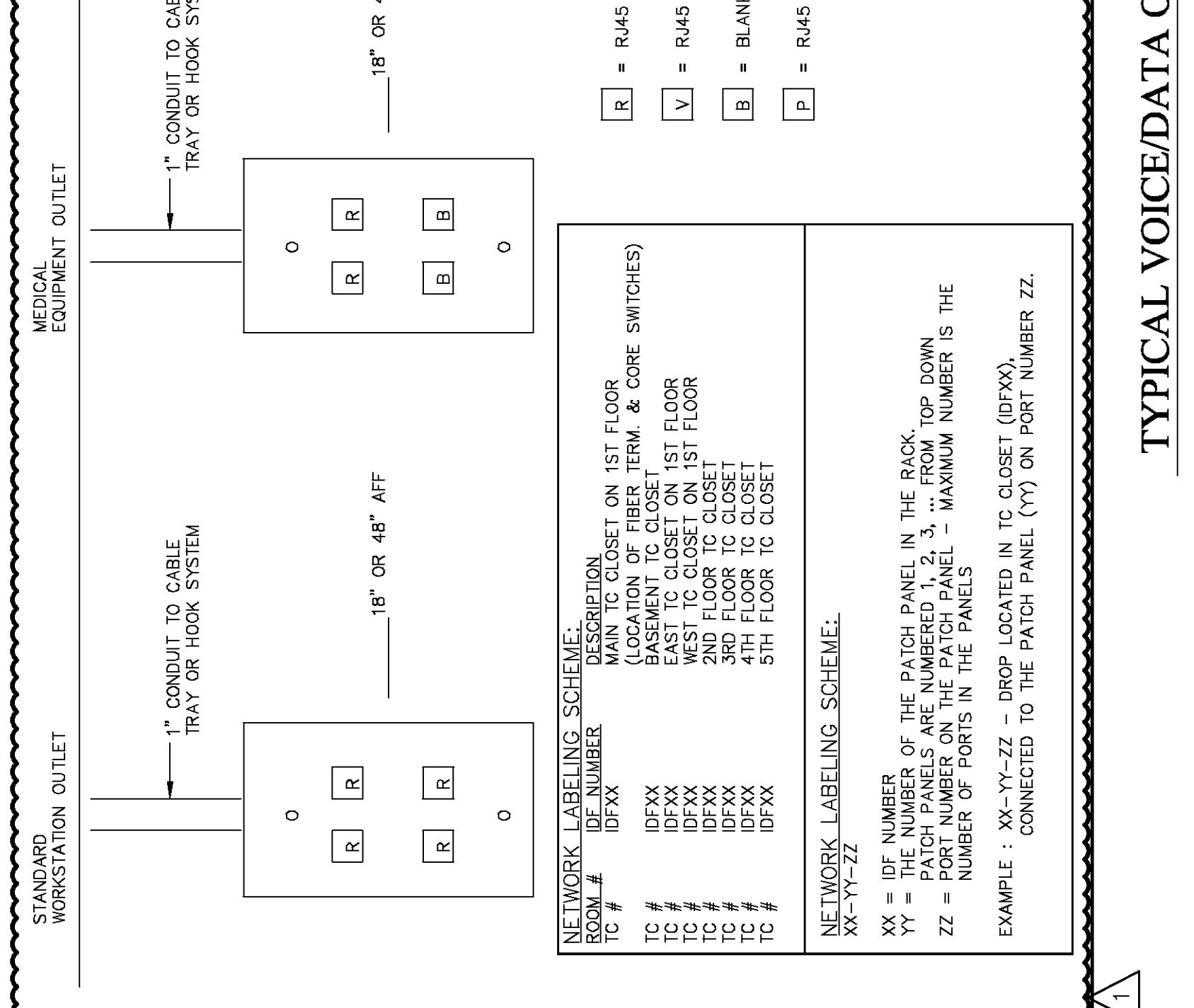


ANTENNA MAST DETAIL (FOR RADIO OR TV)

NOTES: 1.) GC/EC TO PROVIDE QUANTITY OF MASTS AS SHOWN ON DRAWINGS
 2.) REFER TO STATE AND LOCAL REGULATORY AGENCIES FOR WIND LOADING REQUIREMENTS AND CORRESPONDING DESIGN.



TYPICAL VOICE/DATA OUTLET CONFIGURATIONS



TIME CLOCK DETAIL