

Consultant
Civil Engineer
Delaney-Hoffman Associates, Inc.
226 Main Street, Suite 406
Portland, Maine 04106
Phone: (207) 775-1121
Fax: (207) 879-0898

Consultant
ASSOCIATE ARCHITECT/STRUCTURAL ENGINEER
SHEPHERD HUNTER ARCHITECTS
175 State Street, P.O. Box 619
Portland, Maine 04106
Phone: (207) 772-2846
Fax: (207) 772-1070

Consultant
MECHANICAL/ELECTRICAL ENGINEER
Burd, Roe & Arbore Consulting Engineers, LLC
111 Federal Street
Portland, Maine 04102
Phone: (207) 724-0012
Fax: (207) 724-9339

Consultant
EQUIPMENT PLANNING
S&B
1833 General George Patton Drive
Franklin, Tennessee 37067
Phone: (615) 376-3114
Fax: (615) 376-3114

Consultant
CONSTRUCTION MANAGER
W. J. Johnson
7 Johnson Way
Portland, Maine 04106
Phone: (401) 456-8606
Fax: (401) 456-5516

Consultant
Interior Finisher
Imago Interiors, LLC
1808 West End Ave, Suite 1400
Portland, Maine 04102
Phone: (615) 321-5591
Fax: (615) 321-5589

It is the responsibility of the Construction Manager/General Contractor and all other trades to verify the accuracy of the information and accept conditions of prior work by related trades before proceeding with any work.

Date
11/10/06 Final-issued for Construction

Drawn By
MF

Scale
1/8" = 1'-0"

Francis

Caufman

Foley

Hoffmann

Project Title
Mercy Health Care
System of Maine
FORE RIVER SHORT
STAY HOSPITAL

Project Title
Mercy Health Care
System of Maine
FORE RIVER SHORT
STAY HOSPITAL



Project Number
F05-4898

Drawing Title and Number
FIRE PROTECTION
LEVEL 4 FLOOR PLAN

FP1.04

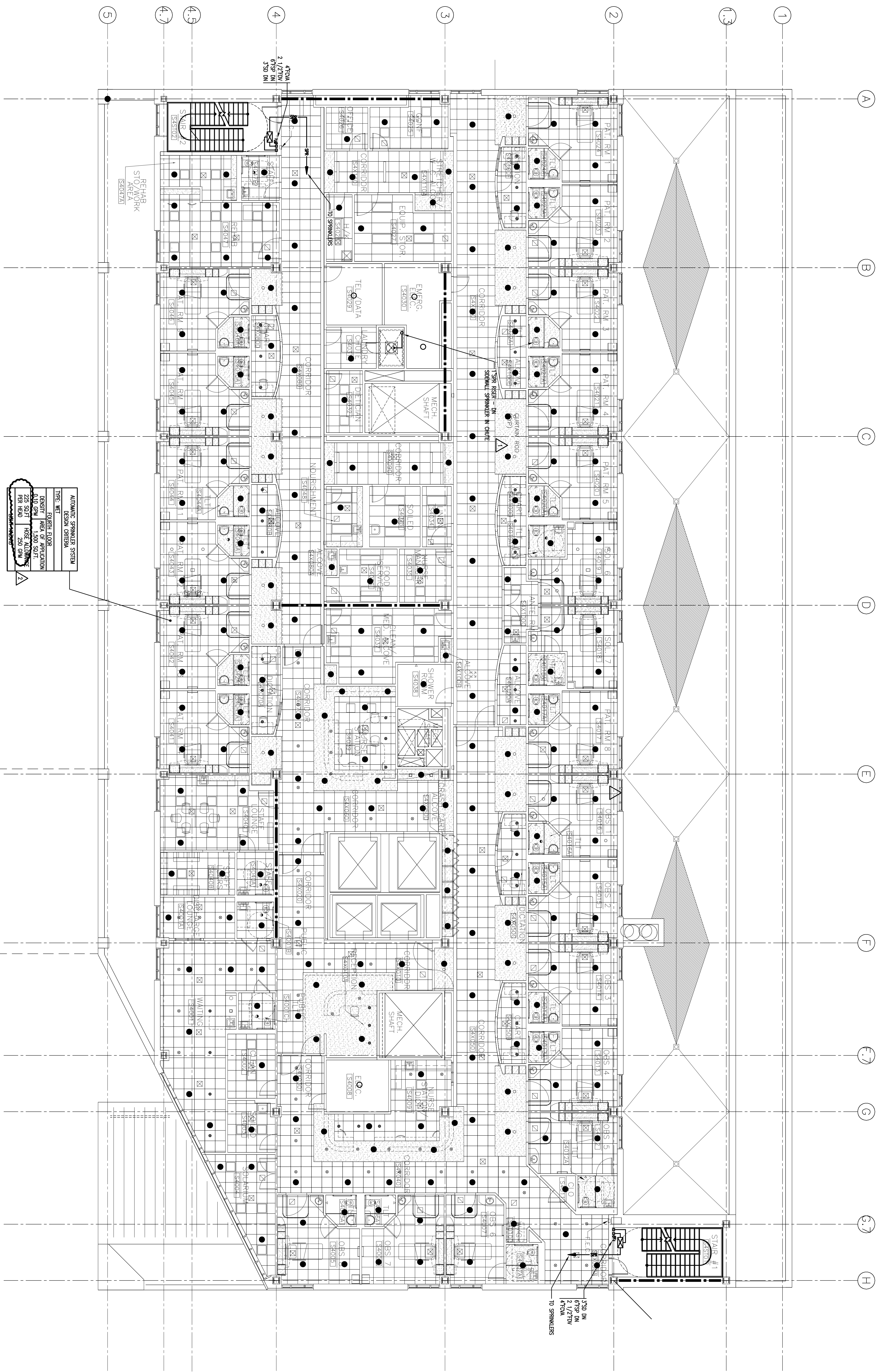


Table with 2 columns: Description and Quantity. It lists items for the automatic sprinkler system, including riser pipe, alarm bell, and hose.

DESCRIPTION	QUANTITY
TYPE W/ SIGNAL DEVICE	
1/2\"/>	